



**PROPERTY FEATURES:**

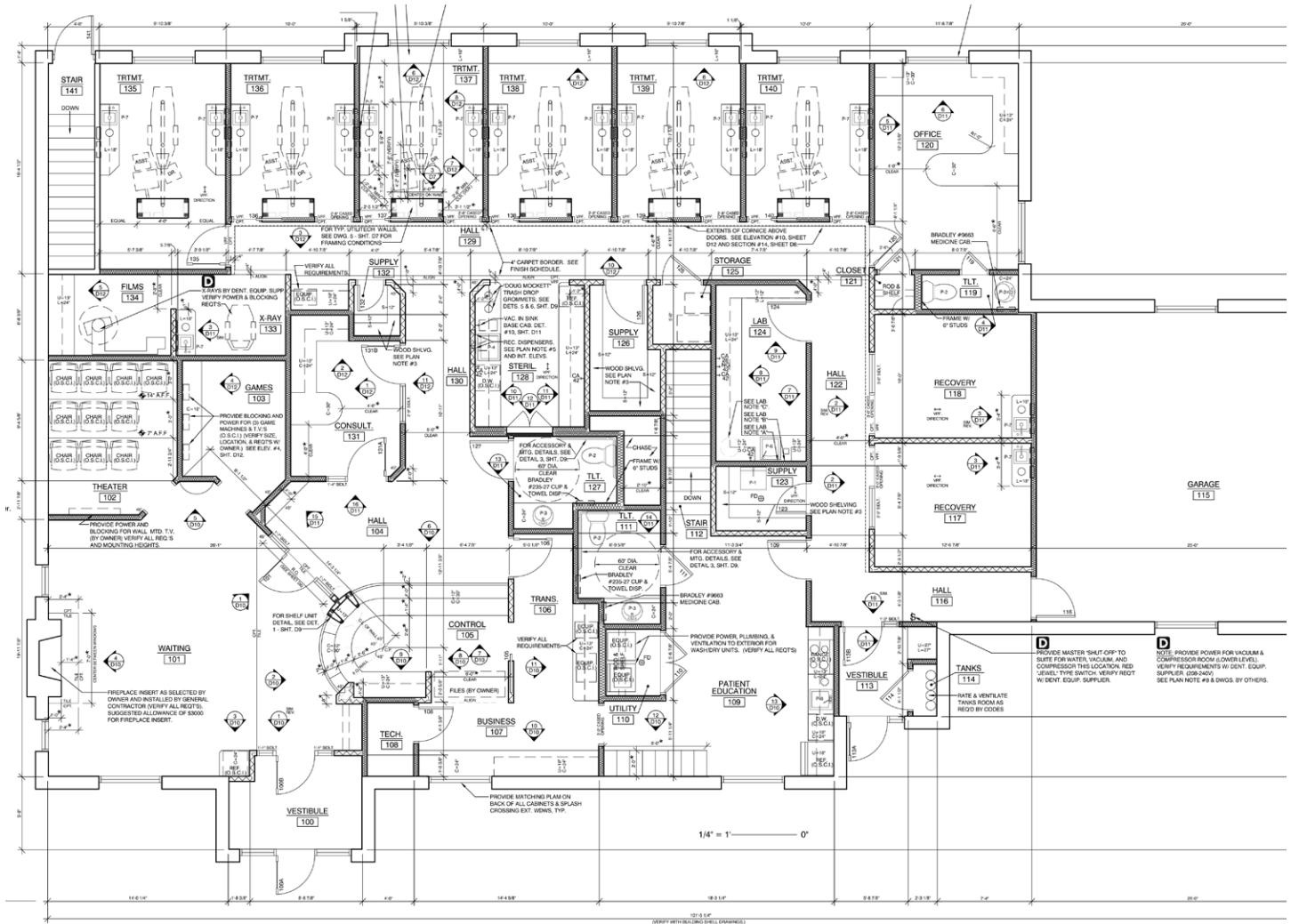
- **Asking Price: \$1,500,000**
- Building Size: 5,114 square feet
- Lot Size: 2.024 acres
- Building and monument signage
- Visibility from I-80/35
- Centrally located within the Des Moines Metro
- Onsite parking
- Buildout: Six treatment rooms, two recovery rooms, two car garage, large reception area, theater room, consult room, unfinished basement
- Extra land that could be used for additional building space

STANBROUGH REALTY COMPANY  
2775 86th Street  
Urbandale, Iowa 50322  
StanbroughRealty.com | 515.334.3345

JEFF STANBROUGH  
CCIM, CPM  
515.202.6649  
Jeff@StanbroughRealty.com

ANDREW MCCUNE  
515.402.1642  
Andrew@StanbroughRealty.com

## Floor Plan



STANBROUGH REALTY COMPANY  
2775 86th Street  
Urbandale, Iowa 50322  
StanbroughRealty.com | 515.334.3345

JEFF STANBROUGH  
CCIM, CPM  
515.202.6649  
Jeff@StanbroughRealty.com

ANDREW MCCUNE  
515.402.1642  
Andrew@StanbroughRealty.com