

1420 W BROADWAY ST FOR LEASE

polk city, iowa



CBRE



PROPERTY OVERVIEW

Lease Price \$16 PSF NNN

Available SF 3,636 SF

Lot Size 0.517 AC

Property Features

- Open Layout
- On-Site Parking
- Large Outdoor Area On-Site
- High Visibility Along Broadway St
- Easy Access to Local & Regional Traffic

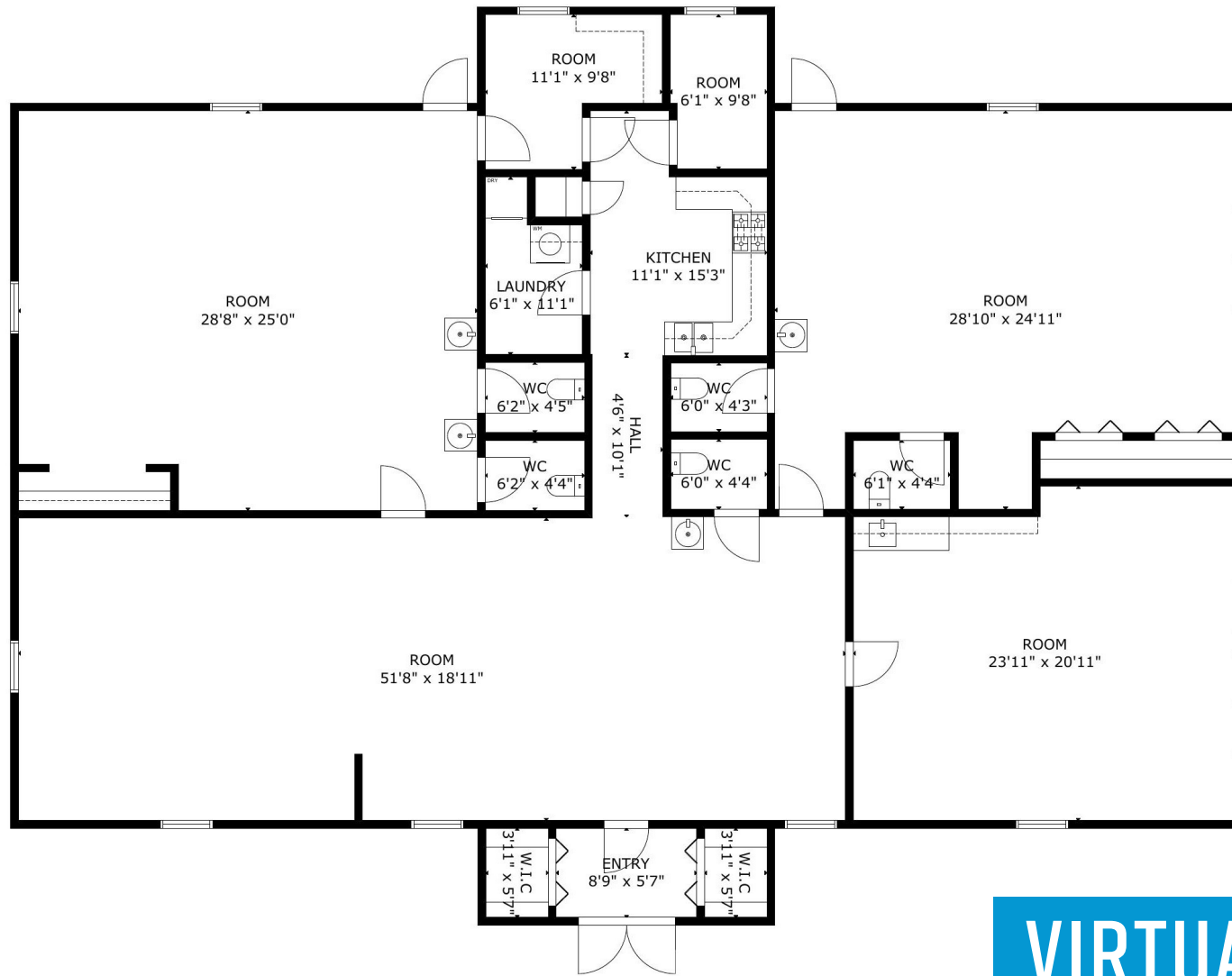
This property was formerly operated as a childcare & educational facility and would be suitable for a wide range of office, retail, education, medical, or community service uses.

The flexible interior layout has multiple large rooms, four restrooms, a kitchenette, an office space, and a laundry room. The exterior has a fenced backyard and convenient surface parking.

Located just 16 miles northwest of Des Moines, Polk City is a vibrant, fast-growing community known for its close proximity to the major Des Moines draws. This centrally-located site, surrounded by both residential homes and local businesses, is minutes away from Saylorville Lake, the Tournament Club of Iowa, and downtown Polk City's shops and restaurants.



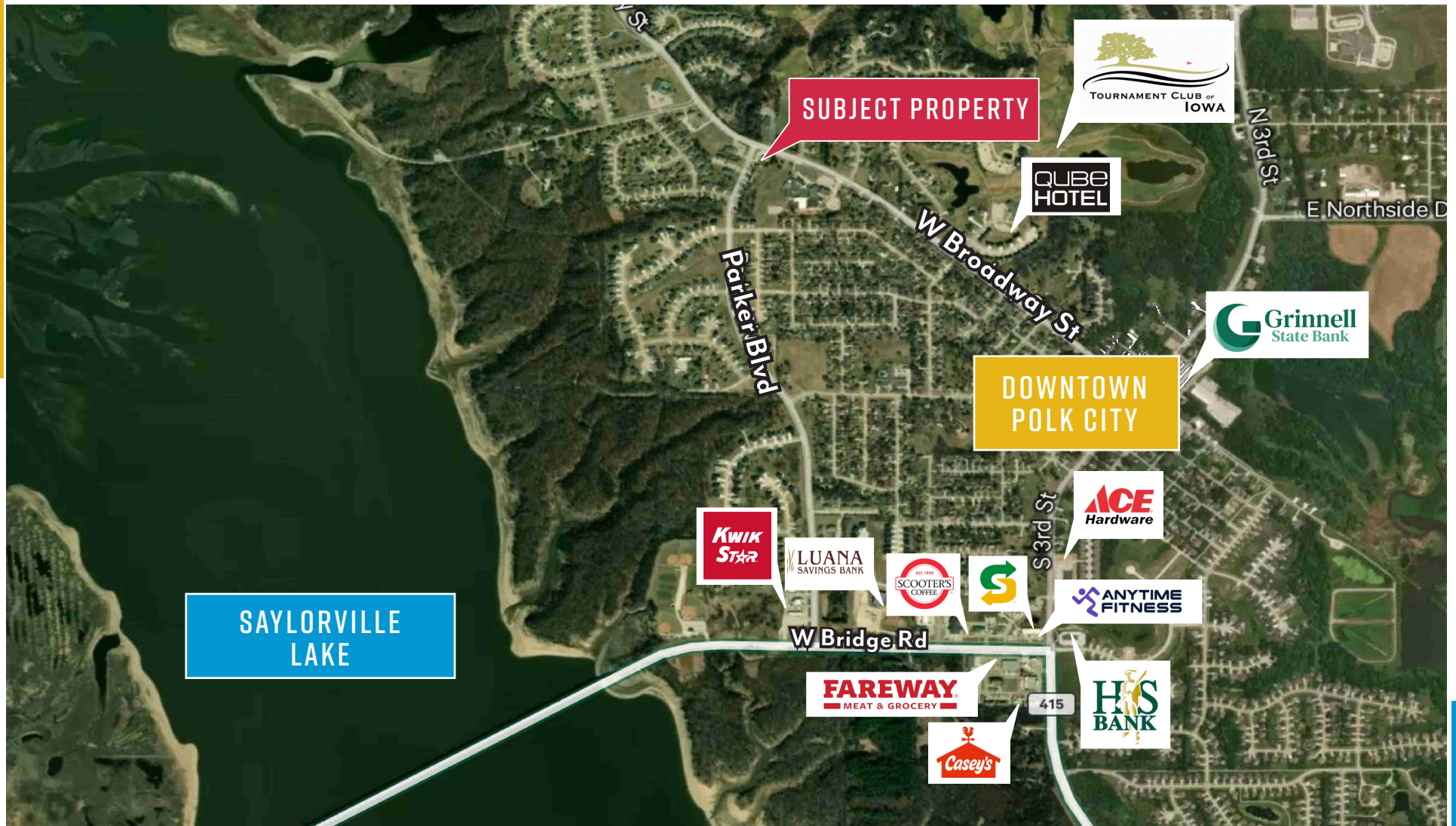
FLOOR PLAN



[VIRTUAL TOUR
CLICK HERE](#)

AERIAL





CONTACT US

AJDIN NADAREVIC

Senior Vice President

+1 515 419 1882

ajdin.nadarevic@cbre.com

Licensed in the State of Iowa

BEN PROBST

Senior Associate

+1 515 326 1985

ben.probst@cbre.com

Licensed in the State of Iowa

© 2026 CBRE, Inc. All rights reserved. This information has been obtained from sources believed reliable, but has not been verified for accuracy or completeness. You should conduct a careful, independent investigation of the property and verify all information. Any reliance on this information is solely at your own risk. CBRE and the CBRE logo are service marks of CBRE, Inc. All other marks displayed on this document are the property of their respective owners, and the use of such logos does not imply any affiliation with or endorsement of CBRE. Photos herein are the property of their respective owners. Use of these images without the express written consent of the owner is prohibited.