



ARES  
INDUSTRIAL  
MANAGEMENT

# MID-ATLANTIC CORPORATE CENTER

1480 GRANDVIEW AVENUE, PAULSBORO, NJ 08066

99,783 Leasable SQ FT | Industrial Warehouse

AVAILABLE DEC 1, 2024  
(Can be made available earlier)



**POTENTIAL  
OUTSIDE  
STORAGE**

**FREE RACKING  
AVAILABLE FOR  
NEW TENANT**

## BUILDING HIGHLIGHTS

- 20' clear ceiling height
- 8 (8'x10') tailgates w/ bumpers & seals
- 1 (12'x14') drive-in door
- 1 (8'x10') drive-in door
- 37' x 41' column spacing
- 800 amp, 3 phase electrical service
- Wet sprinkler system
- New LED lighting w/ motion sensors in warehouse
- Free racking will be available for new tenant
- Exhaust fans throughout
- Office area will be reduced to 3,000 SF and painted & carpeted
- New finishes in restrooms
- 87 parking spaces

## FOR LEASING INFORMATION

Scott Mertz, SIOR  
856-802-6529  
scott.mertz@naimertz.com





ARES  
INDUSTRIAL  
MANAGEMENT

# MID-ATLANTIC CORPORATE CENTER

1480 GRANDVIEW AVENUE, PAULSBORO, NJ 08066

99,783 Leasable SQ FT | Industrial Warehouse



FOR LEASING INFORMATION

Scott Mertz, SIOR

856-802-6529

scott.mertz@naimertz.com



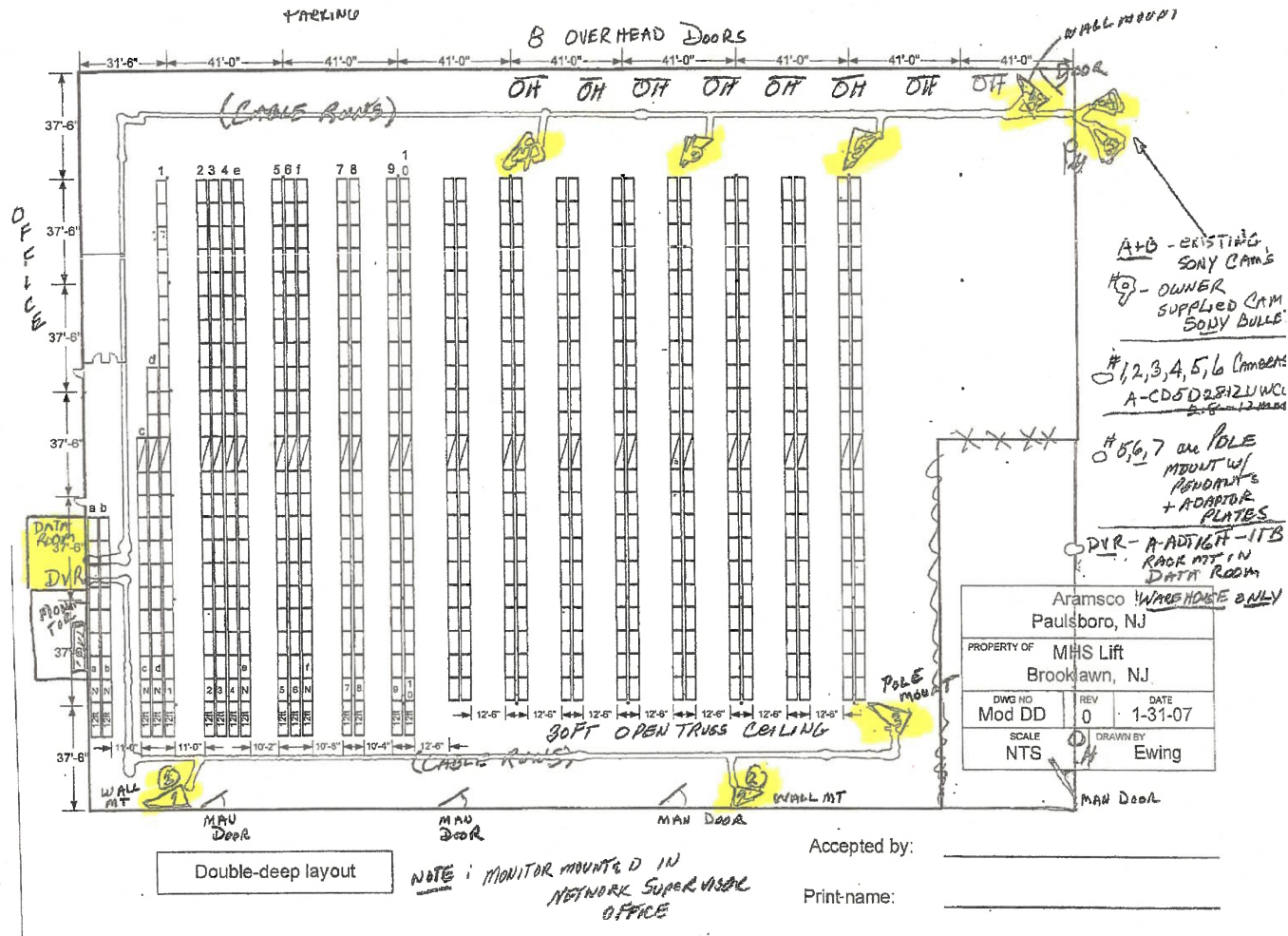


ARES  
INDUSTRIAL  
MANAGEMENT

# MID-ATLANTIC CORPORATE CENTER

1480 GRANDVIEW AVENUE, PAULSBORO, NJ 08066

99,783 Leasable SQ FT | Industrial Warehouse





ARES  
INDUSTRIAL  
MANAGEMENT

# MID-ATLANTIC CORPORATE CENTER

1480 GRANDVIEW AVENUE, PAULSBORO, NJ 08066

99,783 Leasable SQ FT | Industrial Warehouse



FREE RACKING WILL BE AVAILABLE FOR NEW TENANT

FOR LEASING INFORMATION

Scott Mertz, SIOR

856-802-6529

scott.mertz@naimertz.com

**NAI**Mertz

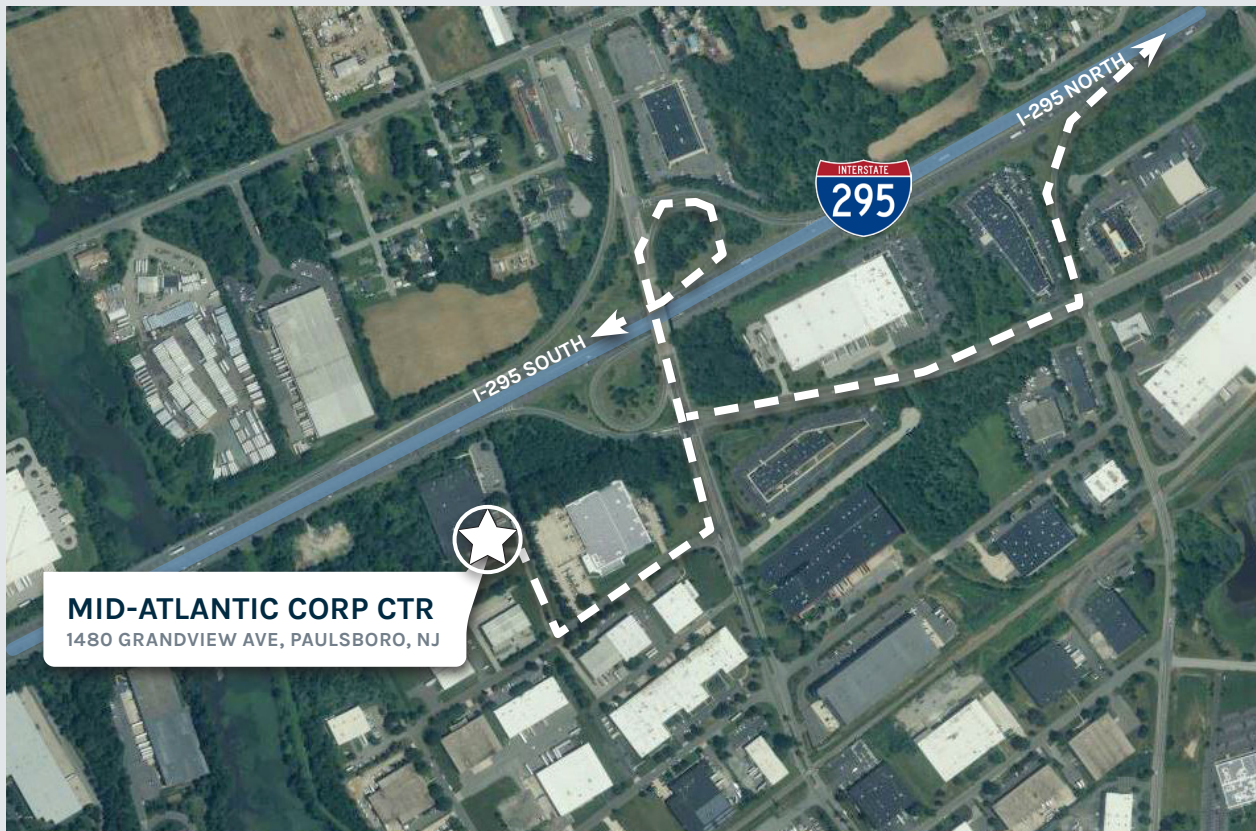


**ARES  
INDUSTRIAL  
MANAGEMENT**

# MID-ATLANTIC CORPORATE CENTER

1480 GRANDVIEW AVENUE, PAULSBORO, NJ 08066

99,783 Leasable SQ FT | Industrial Warehouse



## DRIVING DISTANCES

I-295 (Exit 20)	< 1 mi	Commodore Barry Bridge	9.4 mi
NJ Turnpike (Exit 2)	8.6 mi	I-95	12.0 mi
NJ Turnpike (Exit 3)	9.0 mi	Center City Philadelphia	13.5 mi
Walt Whitman Bridge	9.2 mi	Philadelphia Int'l Airport	17.4 mi

### FOR LEASING INFORMATION

Scott Mertz, SIOR  
856-802-6529  
scott.mertz@naimertz.com

