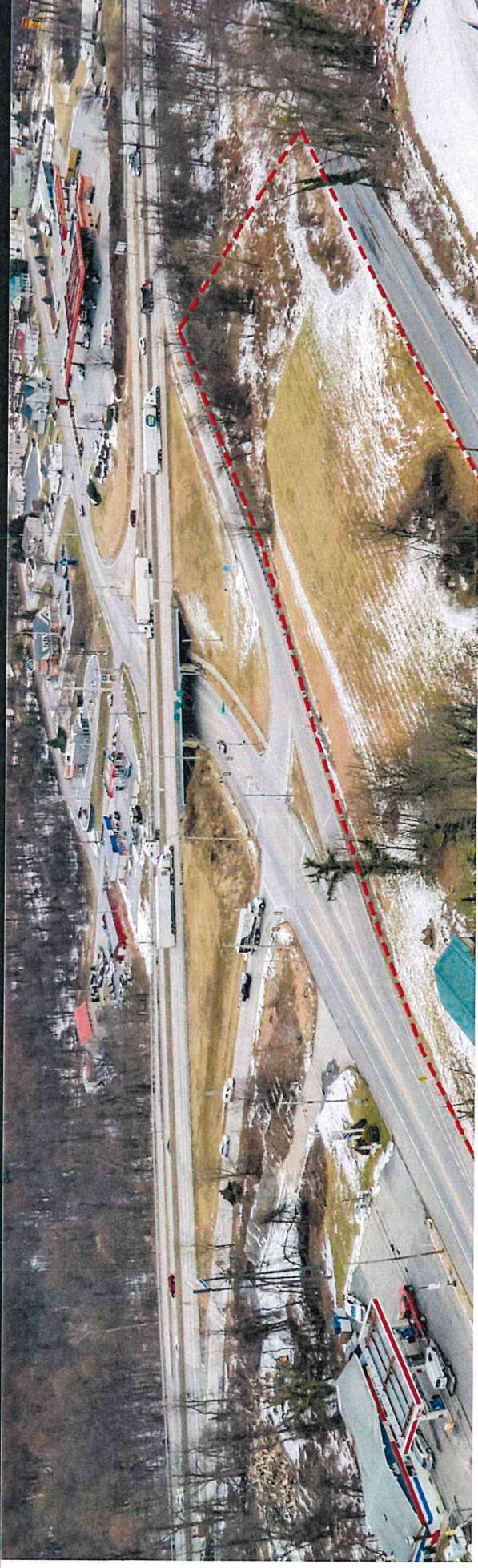


# LAND FOR LEASE

Lewisberry Rd • Lewisberry Rd, Eppers, PA 17319



## PROPERTY DESCRIPTION

This Lease consists of two Parcels Parcel Numbers 39-000-PG0057B/0058. One with a small building and .9 acres. The other vacant tract pf 2.77 acres. Zoned Regional Commercial Office. Sewer and water available. Great visibility from I 83. THIS IS A LONG TERM LEASE

## PROPERTY HIGHLIGHTS

### OFFERING SUMMARY

Lease Rate:	75,000 per year
Available SF:	3.67 Acres
Lot Size:	3.67 Acres

### DEMOGRAPHICS

	1 MILE	3 MILES	5 MILES
Total Households	439	5,473	12,915
Total Population	1,029	13,098	30,894
Average HH Income	\$77,942	\$83,569	\$89,239

**BILL ROTHMAN**

717.623.5011  
brothman@rsrrealtors.com

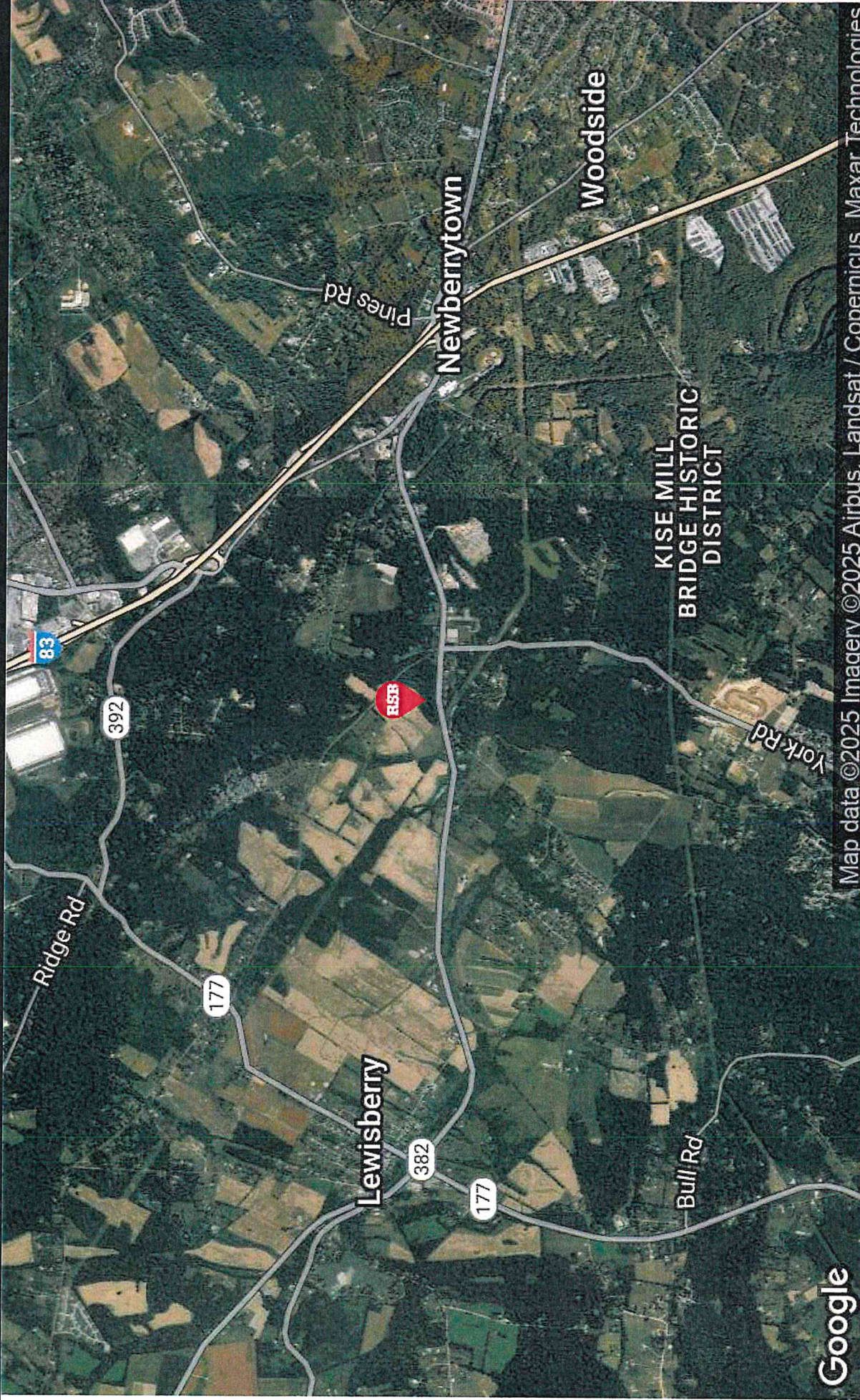
3 Lemoyne Drive  
Lemoyne, PA 17043  
717.763.1212  
www.rsrealtors.com



The information, though deemed reliable, is herein not warranted and is subject to correction, revision, verification and change without notice. RSR, REALTORS®, its agents and employees assume no liability for any errors or

**LAND FOR LEASE**

Lewisberry Rd • Lewisberry Rd, Etters, PA 17319



Map data ©2025 Imagery ©2025 Airbus, Landsat / Copernicus, Maxar Technologies

Google

**BILL ROTHMAN**

717.623.5011  
brothman@rsrrealtors.com

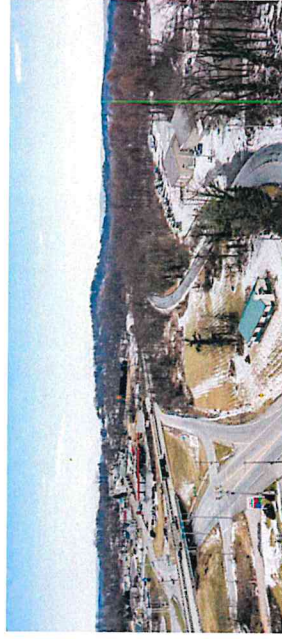
3 Lemoyne Drive  
Lemoyne, PA 17043  
717.763.1212  
www.rsrrealtors.com



The information, though deemed reliable, is herein not warranted and is subject to correction, revision, verification and change without notice. RSR, REALTORS®, its agents and employees assume no liability for any errors or

# LAND FOR LEASE

Lewisberry Rd • Lewisberry Rd, Eiters, PA 17319



**BILL ROTHMAN**

717.623.5011

[brothman@rsrrealtors.com](mailto:brothman@rsrrealtors.com)

3 Lemoyne Drive

Lemoyne, PA 17043

717.763.1212

[www.rsrrealtors.com](http://www.rsrrealtors.com)



RSR, REALTORS®

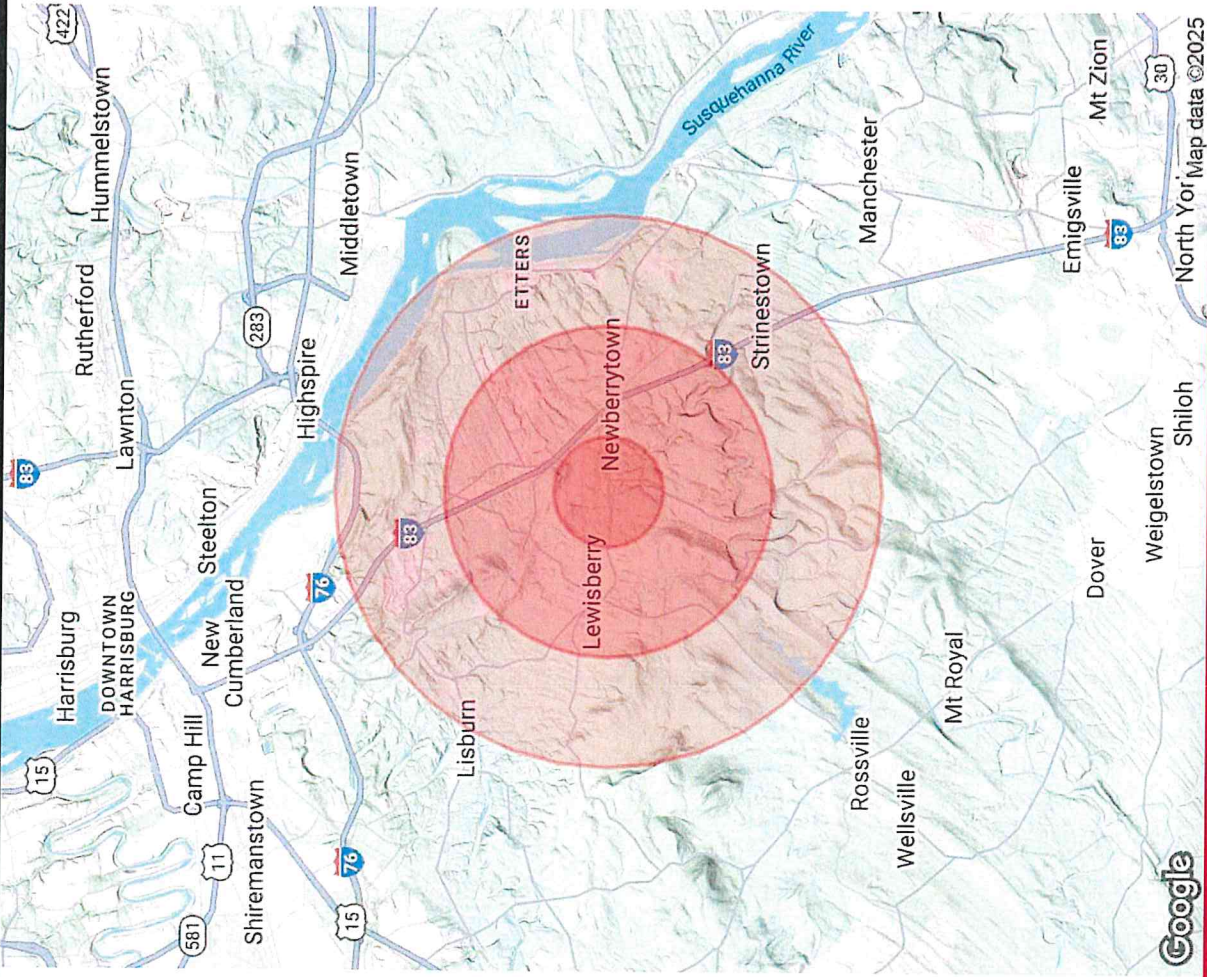
The information, though deemed reliable, is herein not warranted and is subject to correction, revision, verification and change without notice. RSR, REALTORS®, its agents and employees assume no liability for any errors or

# LAND FOR LEASE

Lewisberry Rd • Lewisberry Rd, Etters, PA 17319

POPULATION	1 MILE	3 MILES	5 MILES
Total Population	1,029	13,098	30,894
Average Age	39.9	44.0	43.7
Average Age (Male)	36.9	44.6	44.1
Average Age (Female)	46.6	43.7	42.7
HOUSEHOLDS & INCOME	1 MILE	3 MILES	5 MILES
Total Households	439	5,473	12,915
# of Persons per HH	2.3	2.4	2.4
Average HH Income	\$77,942	\$83,569	\$89,239
Average House Value	\$201,882	\$180,035	\$195,062

2020 American Community Survey (ACS)



**BILL ROTHMAN**  
717.623.5011  
brothman@rsrrealtors.com

3 Lemoyne Drive  
Lemoyne, PA 17043  
717.763.1212  
www.rsrrealtors.com



The information, though deemed reliable, is herein not warranted and is subject to correction, revision, verification and change without notice. RSR, REALTORS®, its agents and employees assume no liability for any errors or