



FOR SALE
FLEX|RETAIL



**McKELVEY
PROPERTIES**
building relationships . creating wealth

7455 Veterans Memorial Pkwy St. Peters, MO 63376

Kim Richter • 314.333.9844
krichter@mckelveyproperties.com

WATCH VIDEO

HERE



SALE PRICE: \$799,000.00



5,347 SF FREESTANDING BUILDING ON 0.65 ACRES





FOR SALE

7455 Veterans Memorial Pkwy
St. Peters, MO 63376

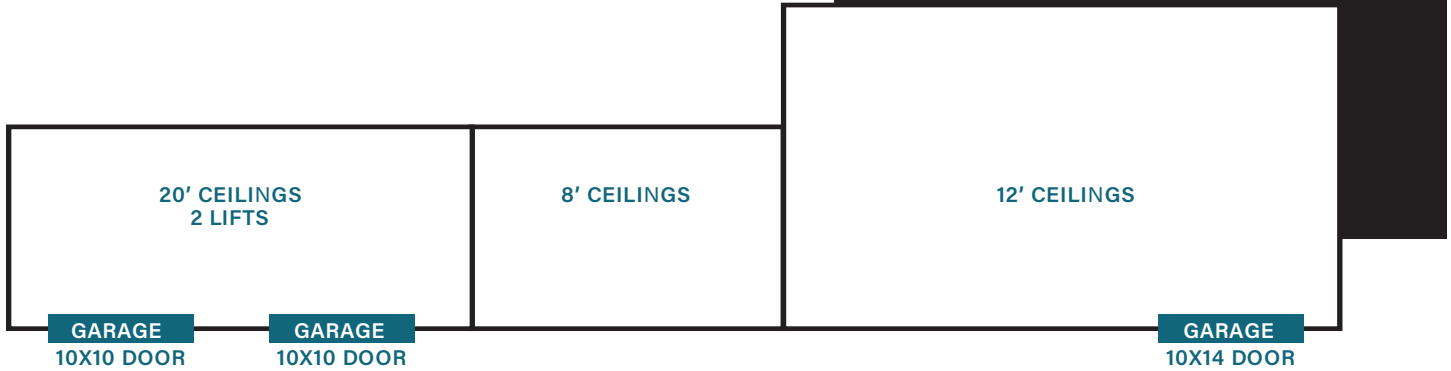
FLEX | RETAIL



McKELVEY
PROPERTIES
building relationships . creating wealth

SALE PRICE: \$799,000.00

CONCRETE PAD



PROPERTY HIGHLIGHTS

Strategically located along Highway 70 with high visibility, this property attracts significant traffic and clientele. Modern facilities and ample parking make it a convenient and attractive location for both customers and employees.

- **Modern Utilities:** Equipped with up-to-date utilities to meet all business requirements.
- **New parking and roof:** New parking and roof as of March 2024.
- **Easy access for deliveries:** Convenient for receiving and sending shipments. Build out is complete with 3 drive-in garages.
- **Ideal for owner/users:** Perfect for owner/operator with light industrial use. Unincorporated St. Charles.
- **Highway visibility:** Fabulous highway visibility with 78,262 VPD along Hwy 70 directly in front of the property.



PROPERTY BENEFITS

This prime commercial property is a valuable investment for various business needs. The current build-out provides versatility, making the space easily adaptable for different commercial purposes.

- **Multiple garage/loading doors:** Facilitates easy access for loading and unloading.
- **Showroom for product display:** Ideal for showcasing products to clients.
- **Small warehouse for storage:** Provides ample space for inventory and supplies.
- **Spacious layout for retail setup:** Perfect for retail businesses looking for a large, open space.



Year Built: 1986 Taxes (2023): \$5,771
Zoned: C-Improved Commercial

**WATCH VIDEO
HERE**



CONTACT: Kim Richter • 314.333.9844
krichter@mckelveyproperties.com





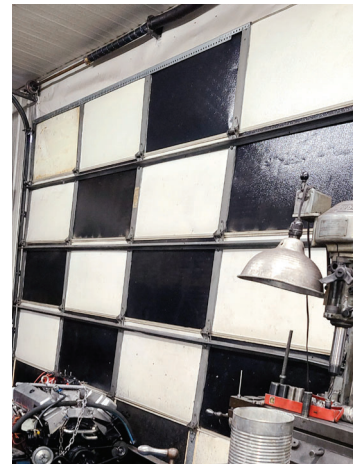
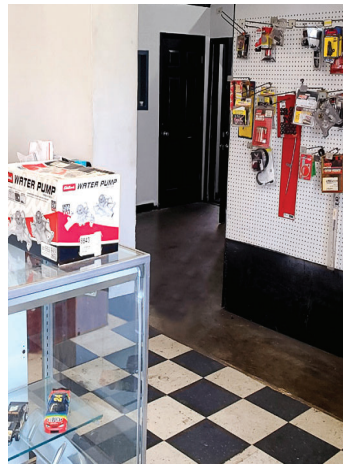
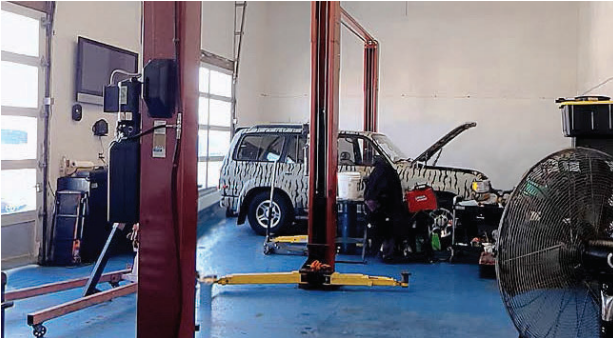
FOR SALE

7455 Veterans Memorial Pkwy
St. Peters, MO 63376



**McKELVEY
PROPERTIES**
building relationships . creating wealth

IMAGERY



CONTACT: Kim Richter • 314.333.9844
krichter@mckelveyproperties.com



McKelvey Properties | 17280 N Outer 40 Rd, Suite 201 | Chesterfield, MO 63005 | 636.669.9111 | www.McKelveyProperties.com
No expressed or implied warranty or representation is made as to the accuracy of the information contained herein. This property is submitted subject to errors, omissions, change of price, withdrawal without notice, prior lease or sale and any other listing conditions imposed by the principals.



PROPERTY DETAILS	WOULD BE PERFECT FOR	TRAFFIC COUNT	NEARBY BUSINESSES
<p>Freestanding Building</p> <p>Nearby many large retailers</p> <p>Great for Owner/User</p>	<p>Autobody Shop</p> <p>Mechanics</p> <p>Warehouse</p> <p>Retail</p> <p>Office</p>	<p>75,262 VPD within 1 mile.</p> <p>114,371 VPD within 5 miles.</p>	<p>Costco</p> <p>Aldi</p> <p>Marshall's</p> <p>Olive Garden</p> <p>Sybergs</p> <p>Drury Hotels</p> <p>Mid Rivers Mall</p> <p>Edward Jones</p> <p>Commerce Bank</p>

DEMOGRAPHICS	1 MILE	3 MILES	5 MILES
POPULATION	6,270	56,066	153,945
HOUSEHOLDS	2,626	21,539	59,996
AVERAGE HH INCOME	\$85,142	\$113,693	\$116,559

CONTACT: Kim Richter • 314.333.9844
 krichter@mckelveyproperties.com

