

PRIME COMMERCIAL LAND

# FOR SALE

4-Acre Site

**SALE INCLUDES CUP AND PLANS FOR AUTO SALES & REPAIRS**

International Center  
100 Ashby Park Drive  
Williamsburg, VA 23188



## ABOUT PROPERTY

- Located at International Center across from Sentara Hospital in Williamsburg. Convenient to Interstate 64 and Route 199/Humelsine Parkway
- Zoning "Economic Opportunity"; Permitted uses include retail, office, light industrial, schools and medical
- Street, water & sewer, common area BMP in place
- **SALE PRICE: \$1,000,000 | \$245,000/AC**

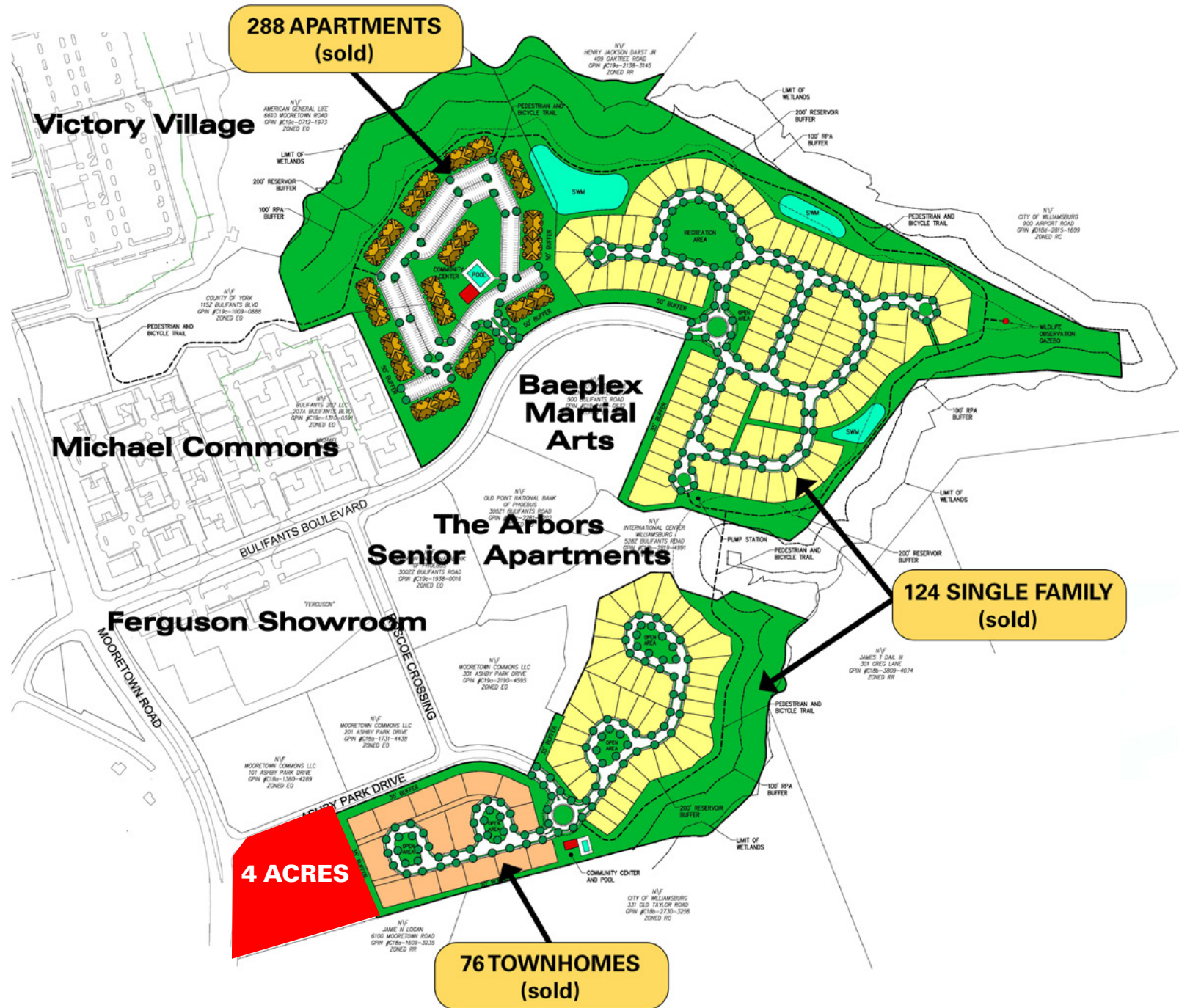
## SALE INCLUDES:

- Municipal Approved Conditional Use Permit [CUP] for Auto Sales & Repair
- Construction and Site Plans for a 22,300 Square Foot 1-story building with ample parking

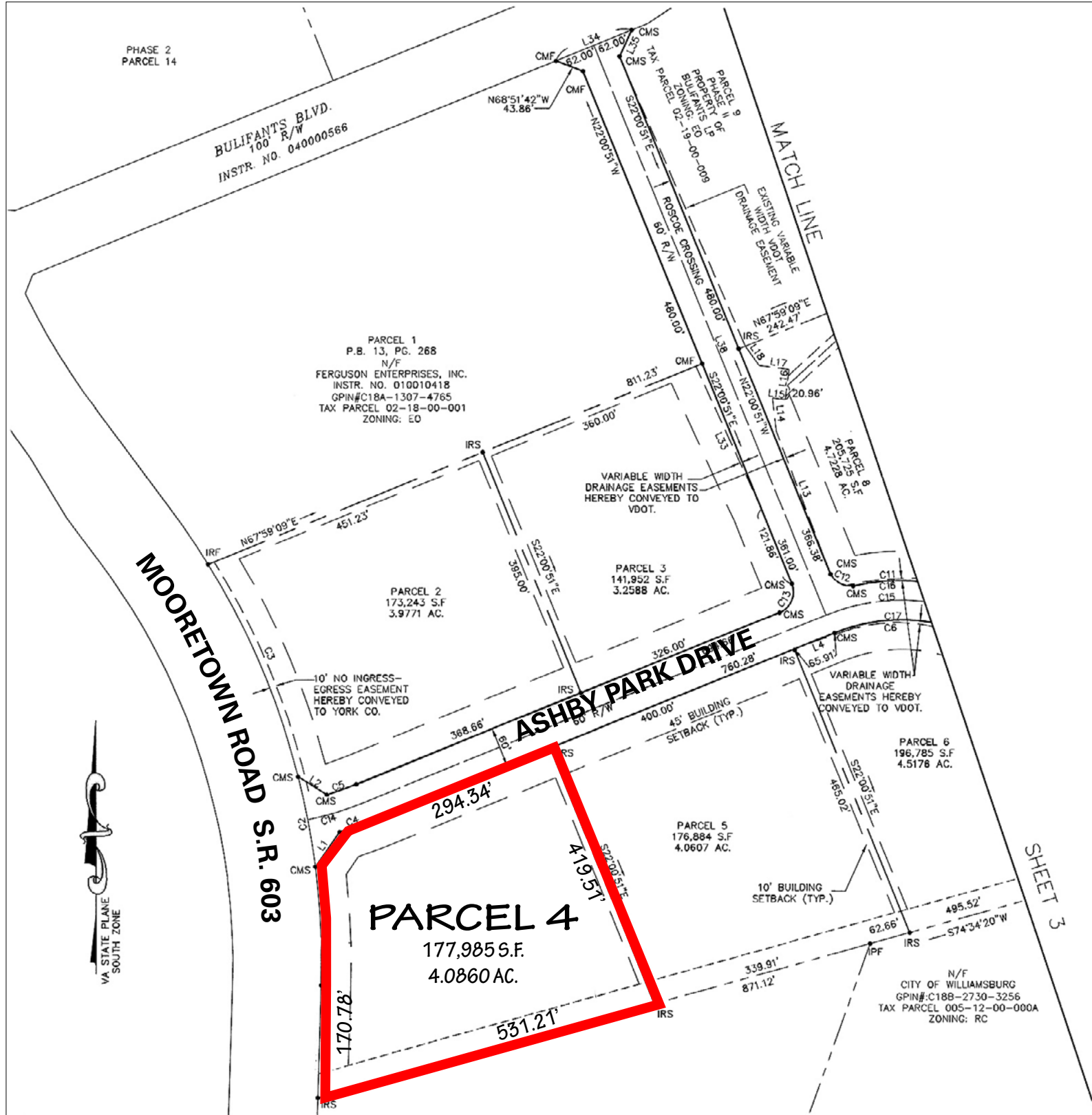
For more information:  
**MICHAEL ALLEN, CCIM**  
Call or Text 757.952.6660  
MichaelAllen@HarveyLindsay.com

**HARVEY LINDSAY**  
COMMERCIAL REAL ESTATE

[www.harveylindsay.com](http://www.harveylindsay.com)

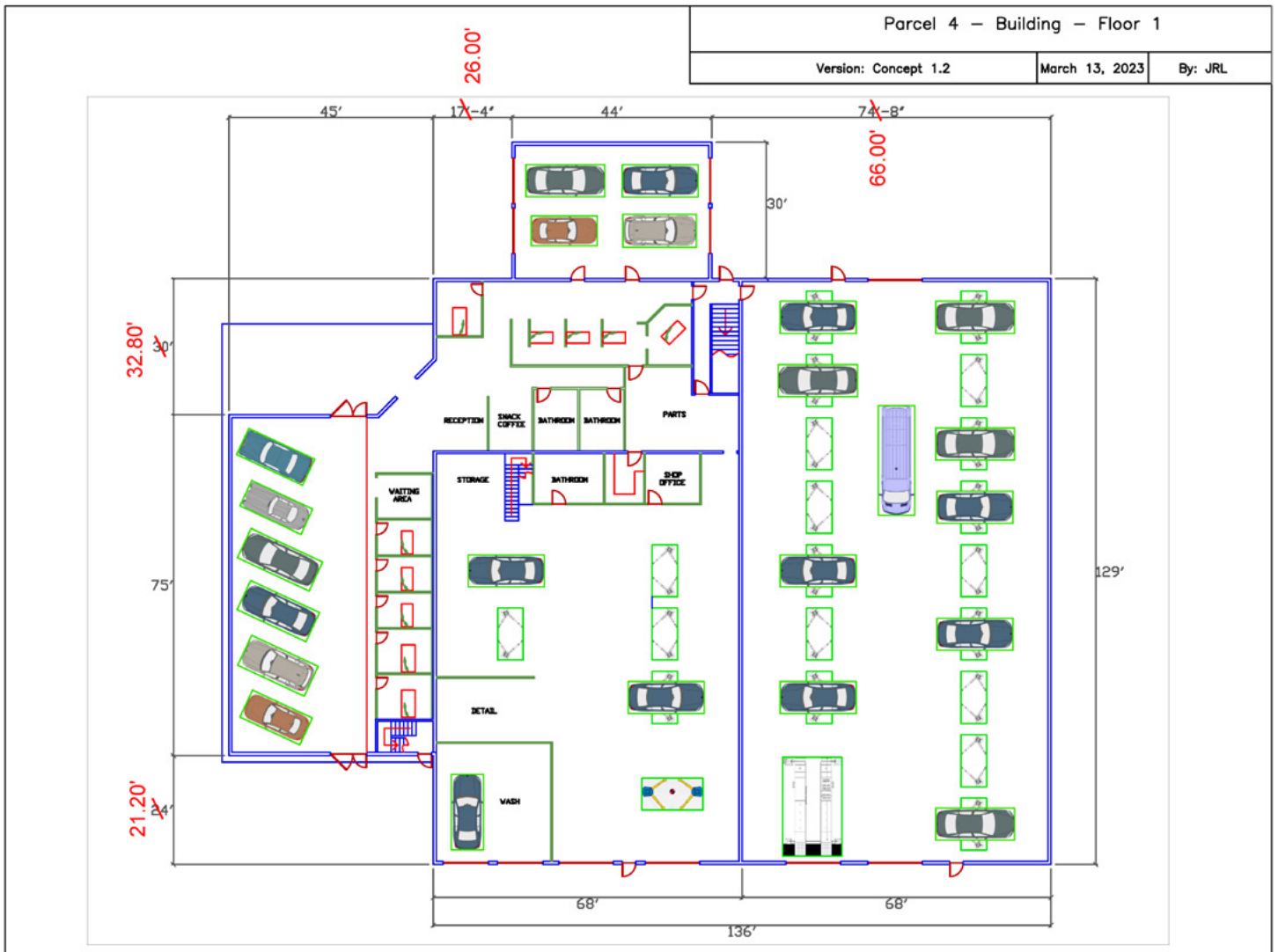


# PLAT | INTERNATIONAL CENTER - 100 Ashby Park Drive | Williamsburg, VA



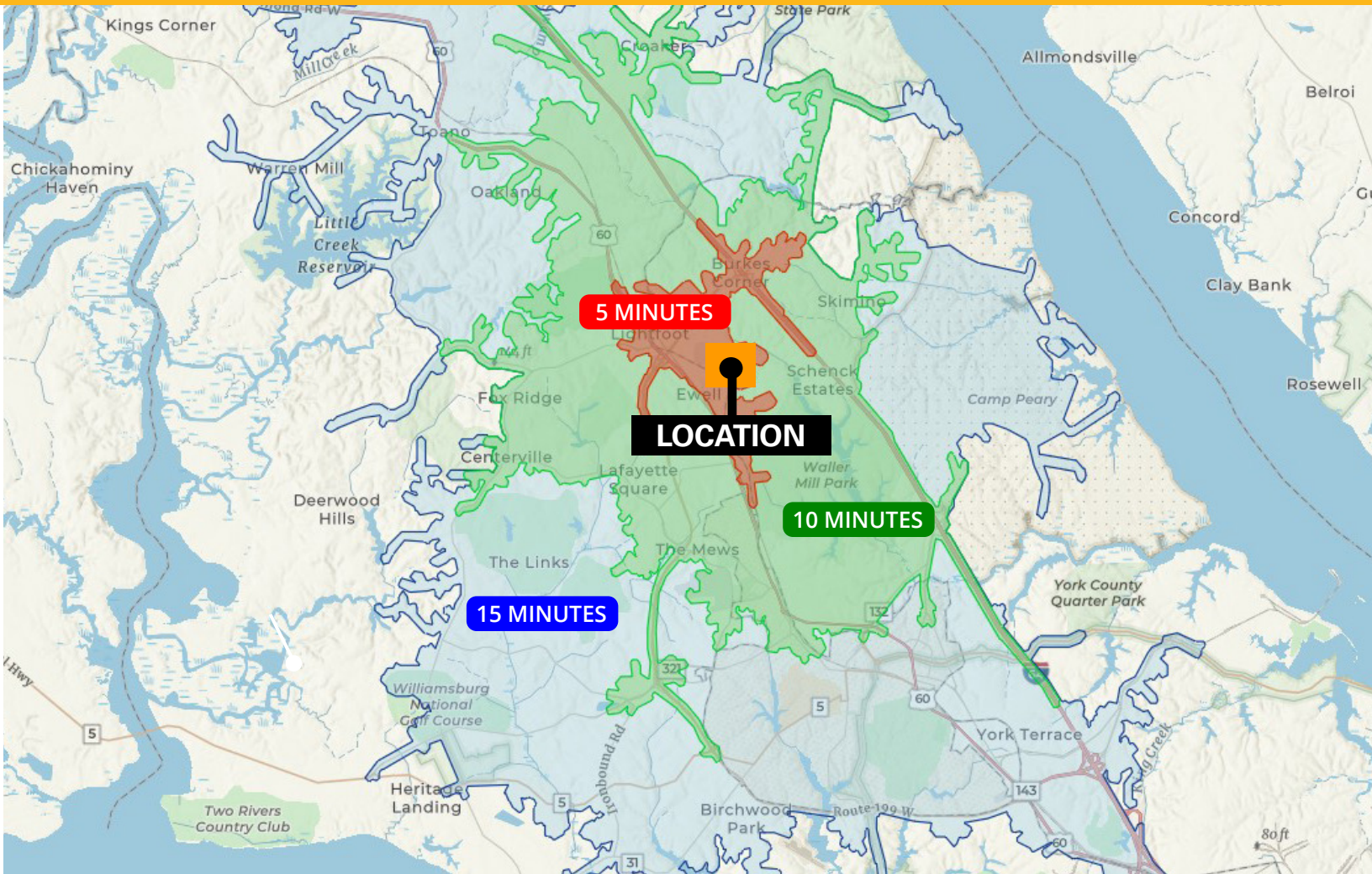


# 22,300 SQUARE FOOT 1- STORY RENDERING | 100 Ashby Park Drive



The information contained herein has been obtained from sources believed to be reliable but is not warranted. We cannot be responsible for errors, omissions, withdrawal, or prior lease or sale.

# DEMOGRAPHICS | 100 Ashby Park Drive | Williamsburg, VA 23188



## 5 MINUTE DRIVE TIME



POPULATION

515



HOUSEHOLDS

\$99,802



AVERAGE INCOME

3,608



DAYTIME POPULATION

## 10 MINUTE DRIVE

26,914



POPULATION

11,862



HOUSEHOLDS

\$108,001



AVERAGE INCOME

30,882



DAYTIME POPULATION

## 15 MINUTE DRIVE

84,186



POPULATION

33,627



HOUSEHOLDS

\$124,610



AVERAGE INCOME

92,892



DAYTIME POPULATION

For more information:

**MICHAEL ALLEN, CCIM**

Call or Text 757.952.6660

[MichaelAllen@HarveyLindsay.com](mailto:MichaelAllen@HarveyLindsay.com)

825 Diligence Drive • Suite 114  
Newport News, Virginia 23606  
757-873-2020  
[www.HarveyLindsay.com](http://www.HarveyLindsay.com)

**HARVEY LINDSAY**

COMMERCIAL REAL ESTATE