

# WHEATON OFFICE CONDOMINIUM

## FOR LEASE



**UNIT 104 – 5,366 SQ. FT.**

**1751 PARK EAST OFFICE CONDOMINIUM  
1751 S. Naperville Road, Wheaton, IL 60189**

*Located on the east side of South Naperville Road midway between Roosevelt & Butterfield Roads*

<b>BUILDING SIZE:</b>	35,000 Gross Sq. Ft.
<b>UNIT/SIZE:</b>	Unit 104 – 5,366 Gross Sq. Ft.
<b>LEASE PRICE:</b>	\$ 21.50 / Sq. Ft. Modified Gross
<b>FLOOR PLAN:</b>	Reception Area 10 Private Offices 2 General Office Areas Kitchenette, IT Room Large Conference Room

FIRST FLOOR CORNER LOCATION  
INDIVIDUALLY CONTROLLED HEAT/AC SYSTEM  
GLASS ENTRANCE LOBBY • ELEVATOR • ADA COMPLIANT  
AMPLE ON-SITE PARKING  
GREAT LOCATION WITH STOPLIGHT ENTRANCE

**FOR MORE INFORMATION PLEASE CALL:**

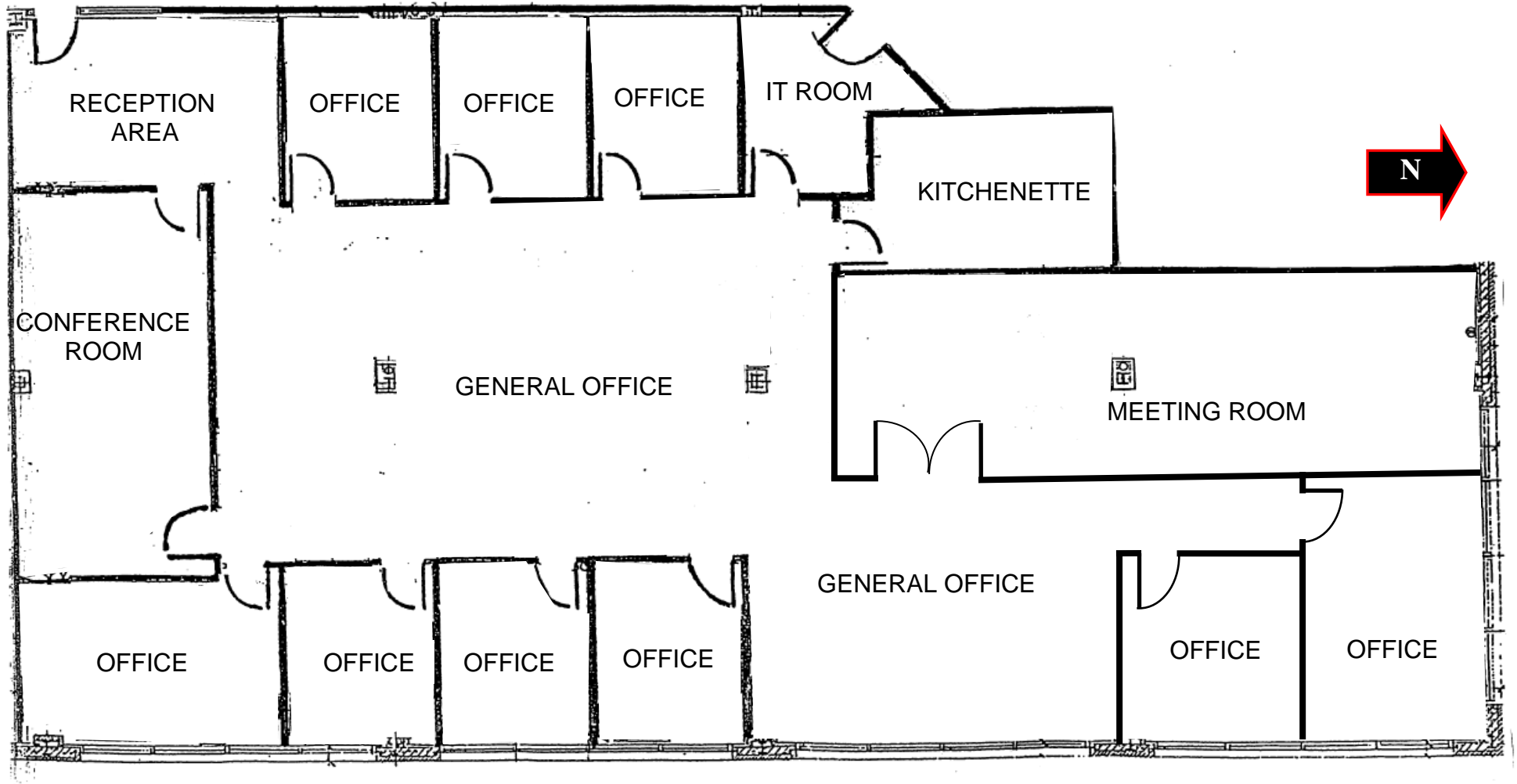
**J.R. WALKER, Inc.**  
Real Estate Brokerage & Development  
1776 S. Naperville Road, Suite 202A  
Wheaton, Illinois 60189

**JEFF WALKER**  
Ph: (630) 462-0075  
Email: [jrw@jrwalker.com](mailto:jrw@jrwalker.com)

# 1751 PARK EAST OFFICE CONDOMINIUM

## UNIT 104 - 5,366 Sq. Ft.

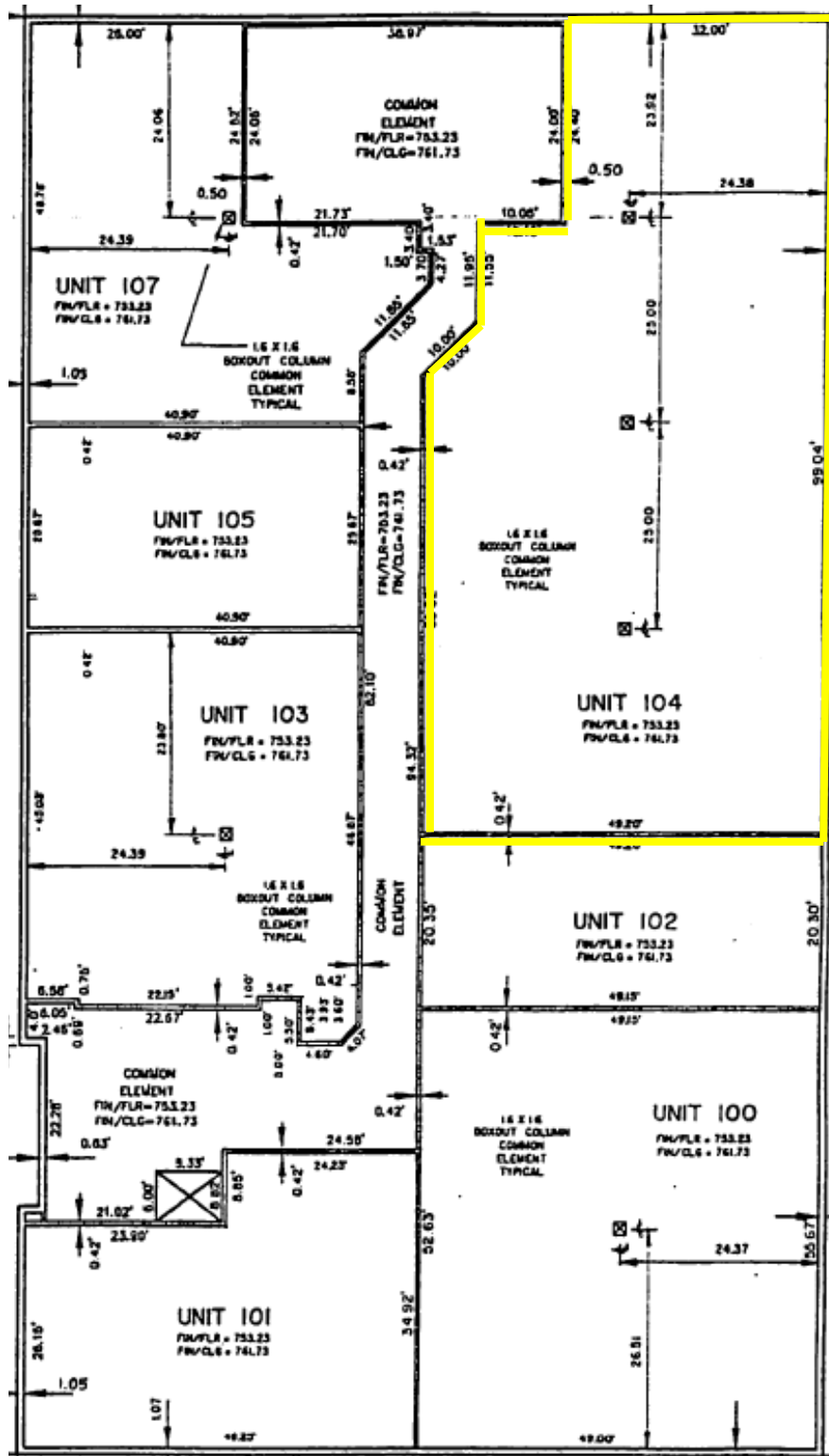
### FLOOR PLAN



J.R. WALKER, Inc. ▪ 1776 S. Naperville Road, Suite 202A, Wheaton, IL 60189 ▪ (630) 462-0075 ▪ (630) 462-5686

THIS INFORMATION HAS BEEN SECURED FROM SOURCES WE BELIEVE TO BE RELIABLE; HOWEVER, WE MAKE NO REPRESENTATIONS OR WARRANTIES, EXPRESSED OR IMPLIED AS TO THE ACCURACY OF THE INFORMATION. SUBMITTED SUBJECT TO ERROR, CHANGE IN STATUS, OR WITHDRAWAL WITHOUT NOTICE.

# 1751 PARK EAST OFFICE CONDOMINIUM FIRST FLOOR PLAN

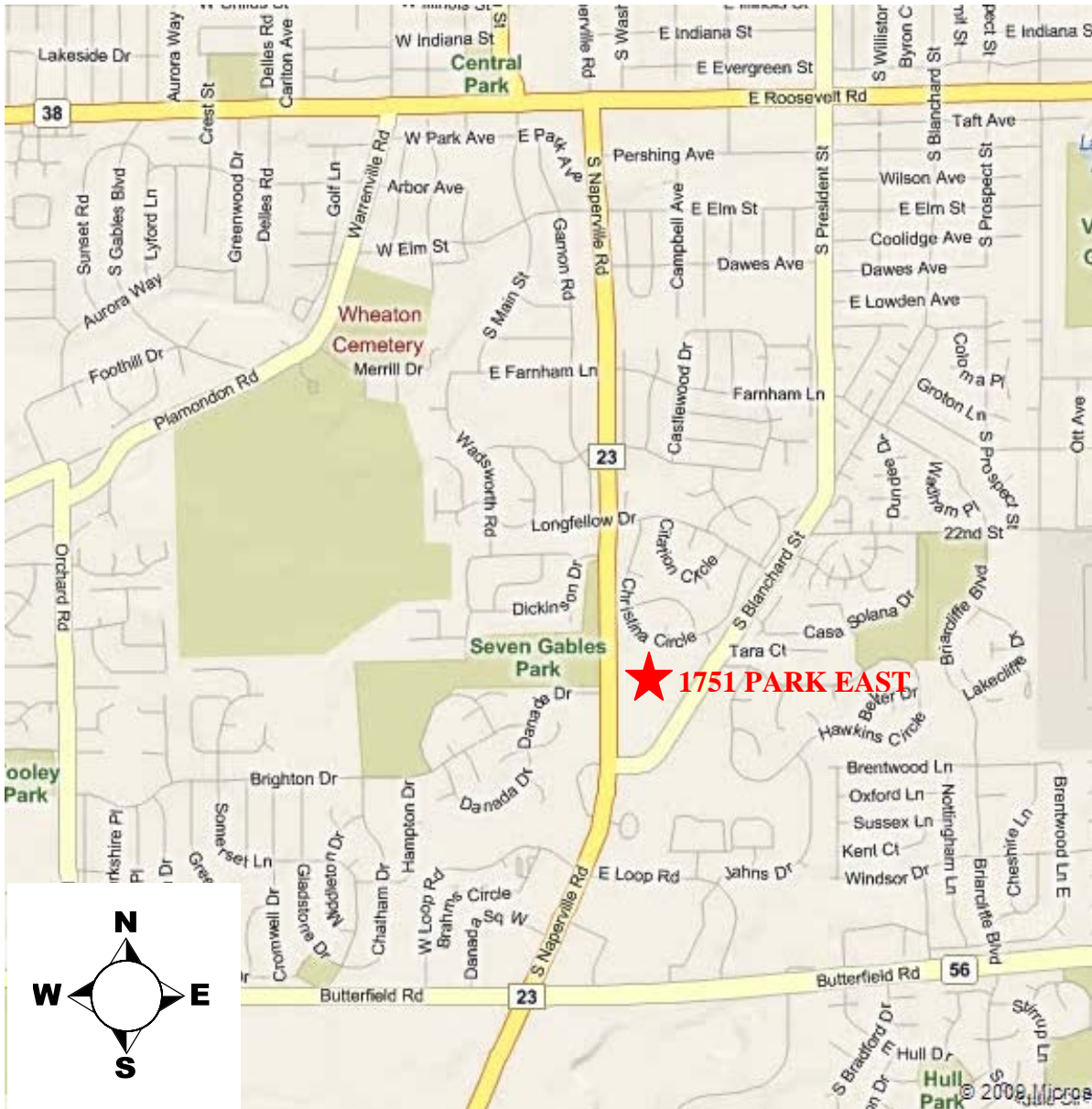


J.R. WALKER, Inc. ▪ 1776 S. Naperville Road, Suite 202A, Wheaton, IL 60189 ▪ (630) 462-0075

THIS INFORMATION HAS BEEN SECURED FROM SOURCES WE BELIEVE TO BE RELIABLE; HOWEVER, WE MAKE NO REPRESENTATIONS OR WARRANTIES, EXPRESS OR IMPLIED, AS TO THE ACCURACY OF THE INFORMATION. SUBMITTED SUBJECT TO ERROR, CHANGE IN STATUS, OR WITHDRAWAL WITHOUT NOTICE.

# LOCATION MAP

## 1751 PARK EAST OFFICE CONDOMINIUM 1751 S. NAPERVILLE ROAD, WHEATON, IL 60189



AERIAL VIEW

# 1751 PARK EAST OFFICE CONDOMINIUM

1751 S. NAPERVILLE ROAD  
WHEATON, ILLINOIS 60189

