



Accelerating success.

FOR LEASE

1111.5 Yellowstone Ave,
Pocatello, ID



Don Zebe

208 403 1973
don.zebe@colliers.com

Jared Zebe

208 709 7311
jared.zebe@colliers.com

Mike Zebe

208 705 6453
mike.zebe@colliers.com

2043 E Center Street
Pocatello, Idaho 83201
208 951 2100
colliers.com/idaho

Property Overview

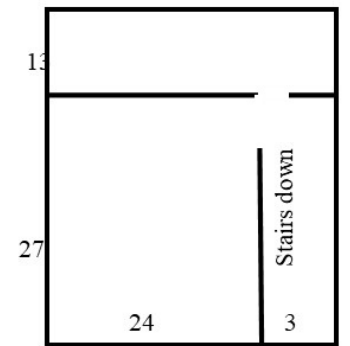
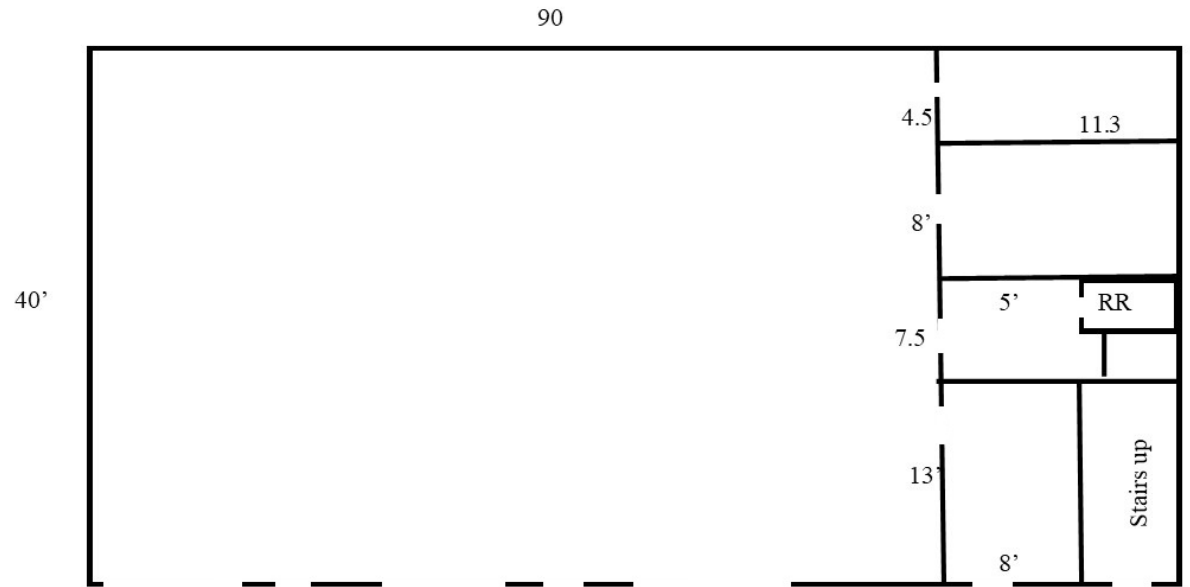
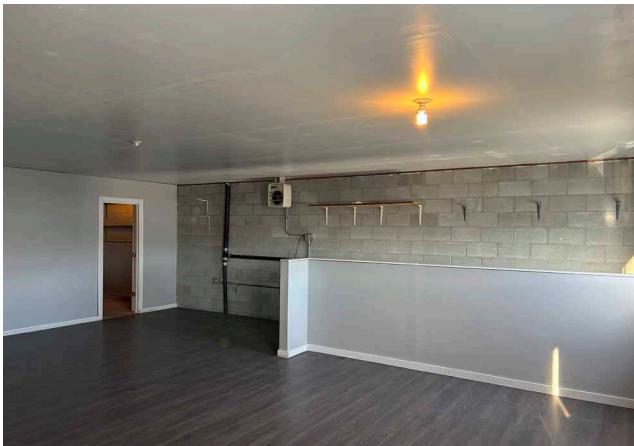
Property Type	Light Industrial
Building Size	4,680 SF
Warehouse	3,600 SF
Office	1,080 SF
Land Size	2 Acres
Construction Type	CMU
Year Built	2010
Zoning	Commercial
Yard	0.75 Acres
Grade Level Drive-In Doors	3
Parking	Ample
Power	3 Phase
Heating & Cooling	Gas Forced Air
Lease Rate	Contact Agent
Property Access	Contact Agent



Southbridge LLC

- Parcel 1: RPCPP021900 0.149 acres
- Parcel 2: RPCPP022000 0.209 acres
- Parcel 3: RPCPP022500 0.336 acres
- Parcel 4: RPCPP022800 0.054 acres
- A portion of parcel: RPCPP022300 0.205 acres (including a building that consists of 3800 SF)

Floor Plans

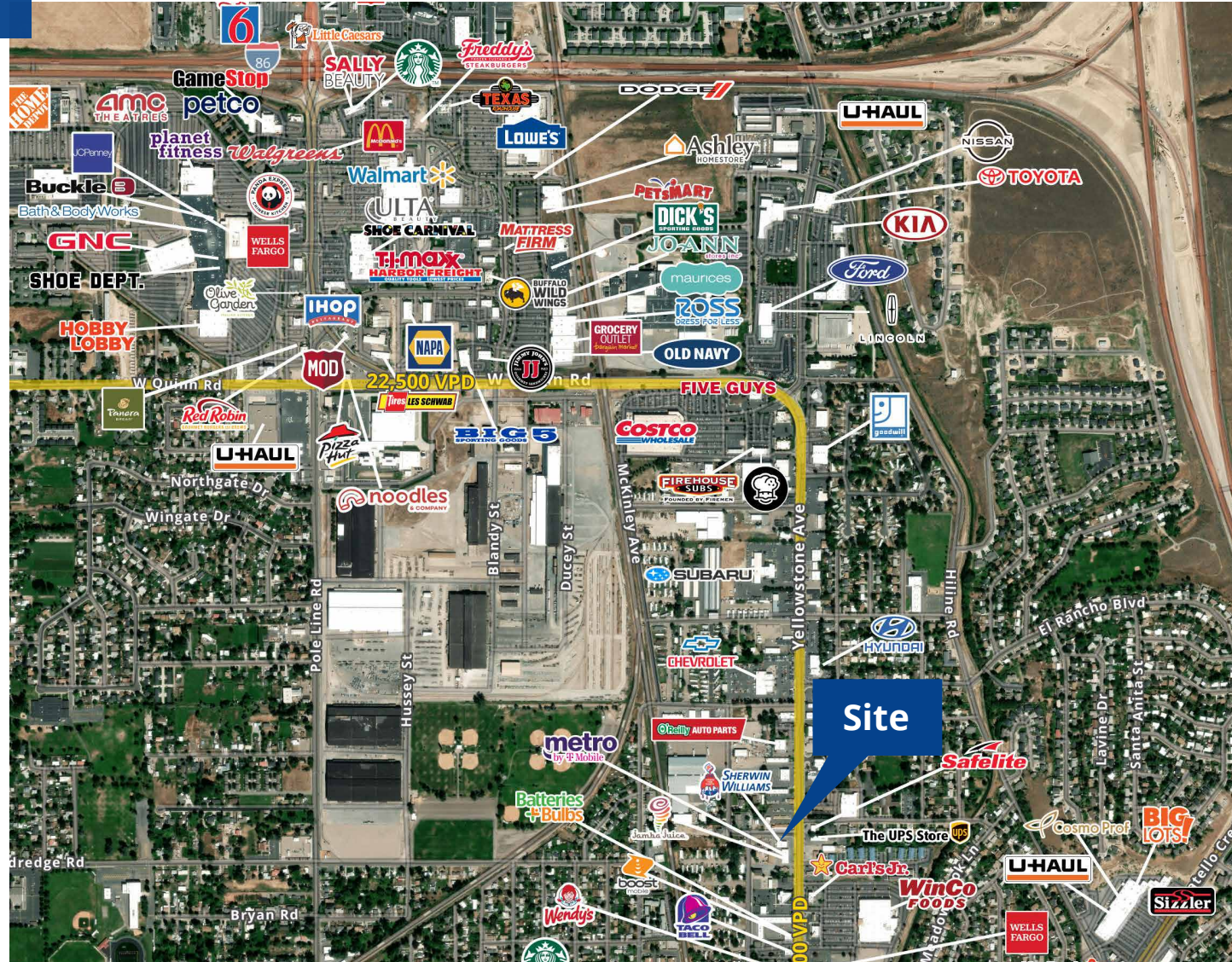


Up 27'

Property Aerials



Location



This document has been prepared by Colliers for advertising and general information only. Colliers makes no guarantees, representations or warranties of any kind, expressed or implied, regarding the information including, but not limited to, warranties of content, accuracy and reliability. Any interested party should undertake their own inquiries as to the accuracy of the information. Colliers excludes unequivocally all inferred or implied terms, conditions and warranties arising out of this document and excludes all liability for loss and damages arising there from. This publication is the copyrighted property of Colliers and /or its licensor(s). © 2024. All rights reserved. This communication is not intended to cause or induce breach of an existing listing agreement. Colliers Eastern Idaho, LLC.

