



THE KAHN
DETROIT OFFICE
FOR LEASE



NORTHERN EQUITIES
GROUP

LUTZ
REAL ESTATE
INVESTMENTS

CBRE

PROPERTY FEATURES



Located in the heart of New Center



Meticulous historic renovation



16' ceiling heights



Abundant & affordable garage parking adjacent to building



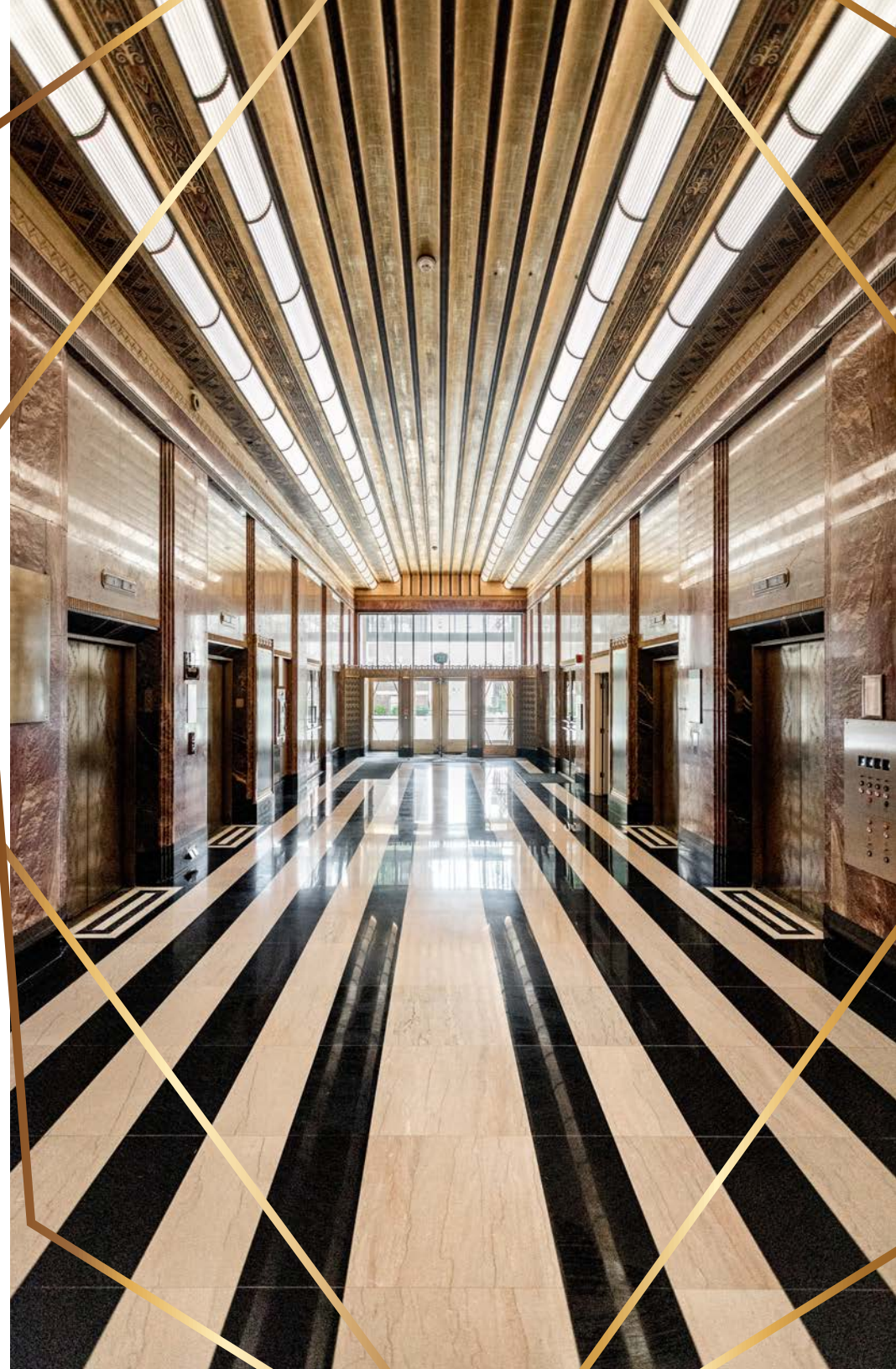
Easy access to The Lodge & I-75



Mixed-use property with 206 luxury apartments on upper floors

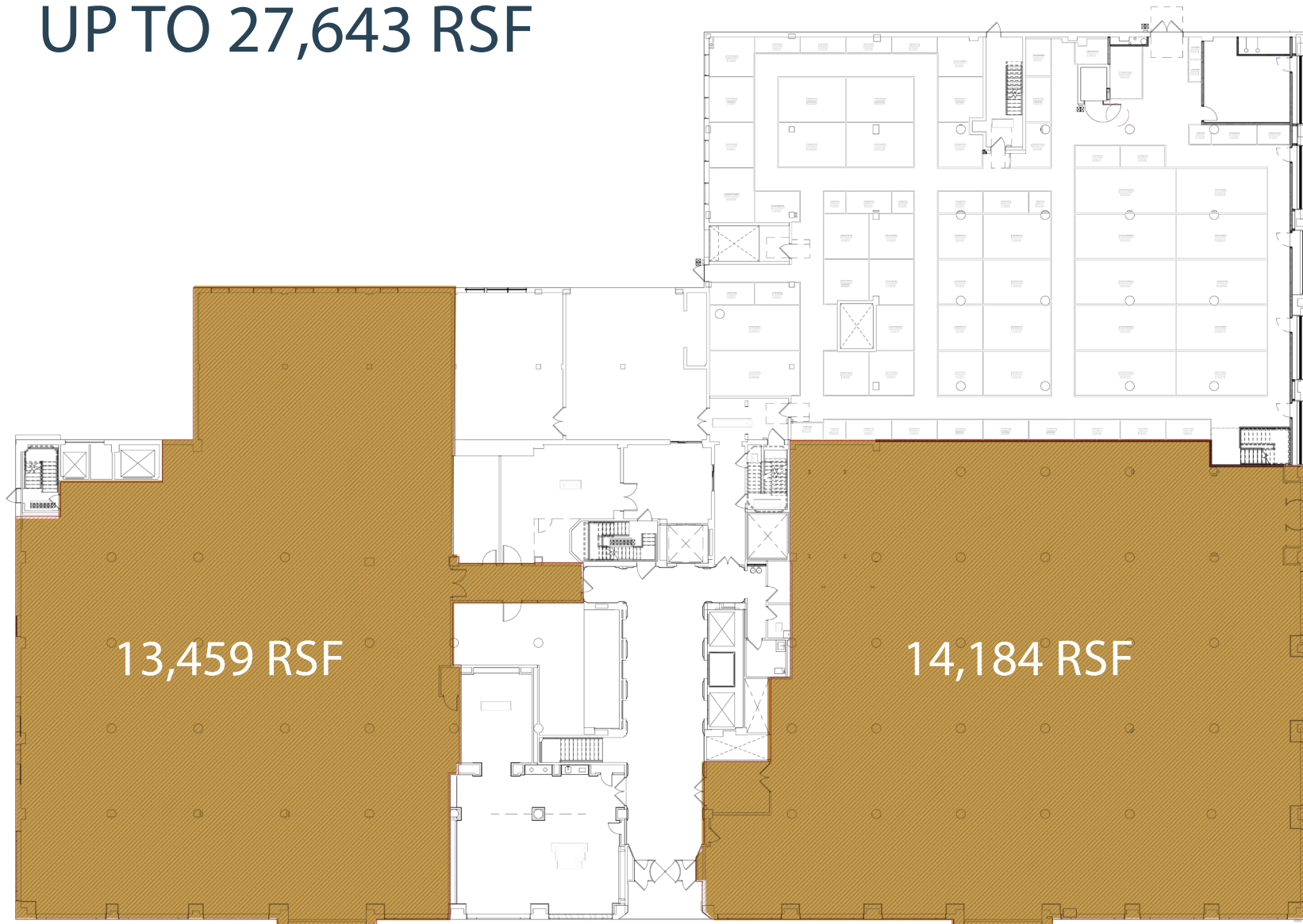


Up to 27,643 SF Available

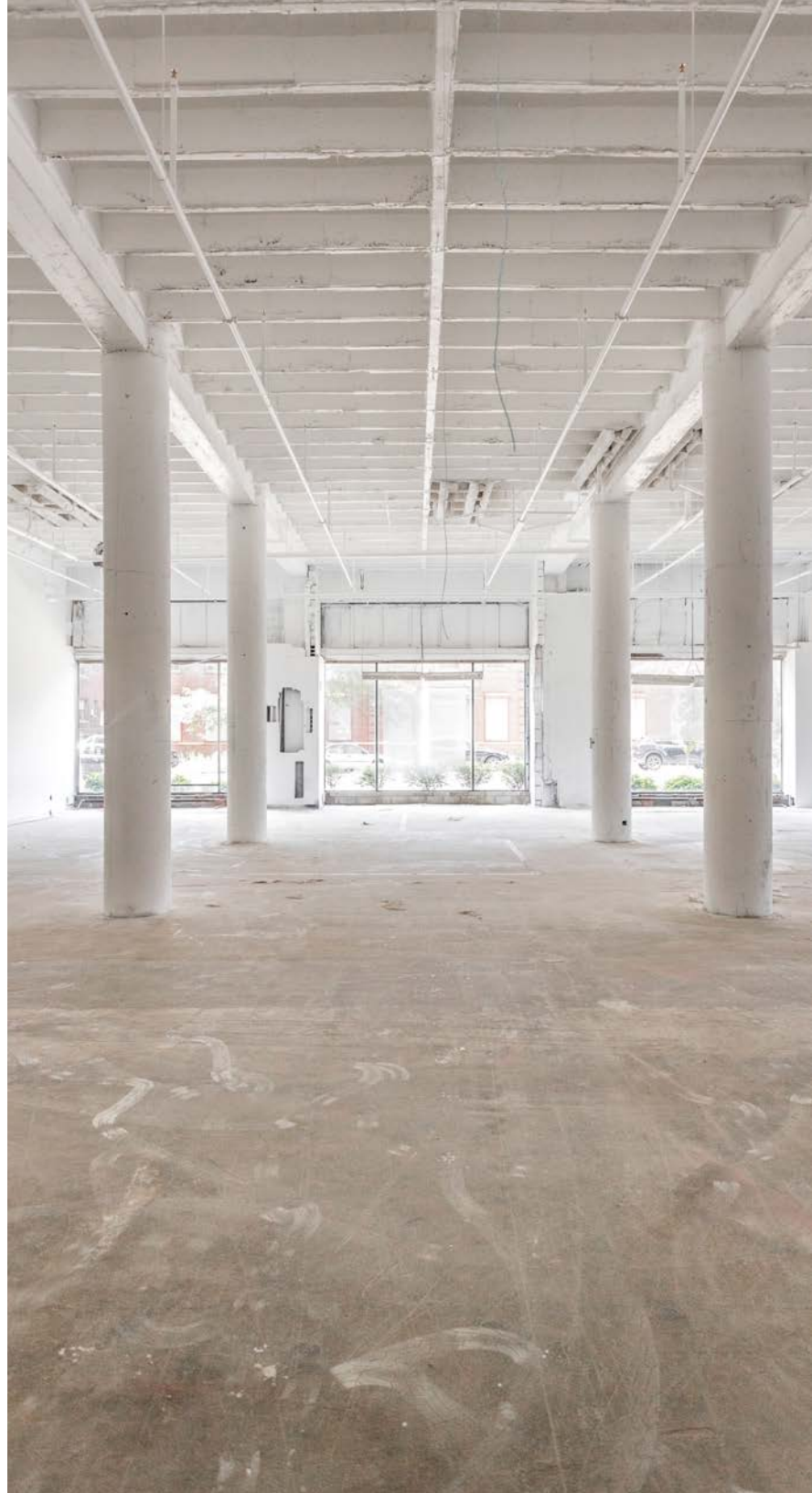


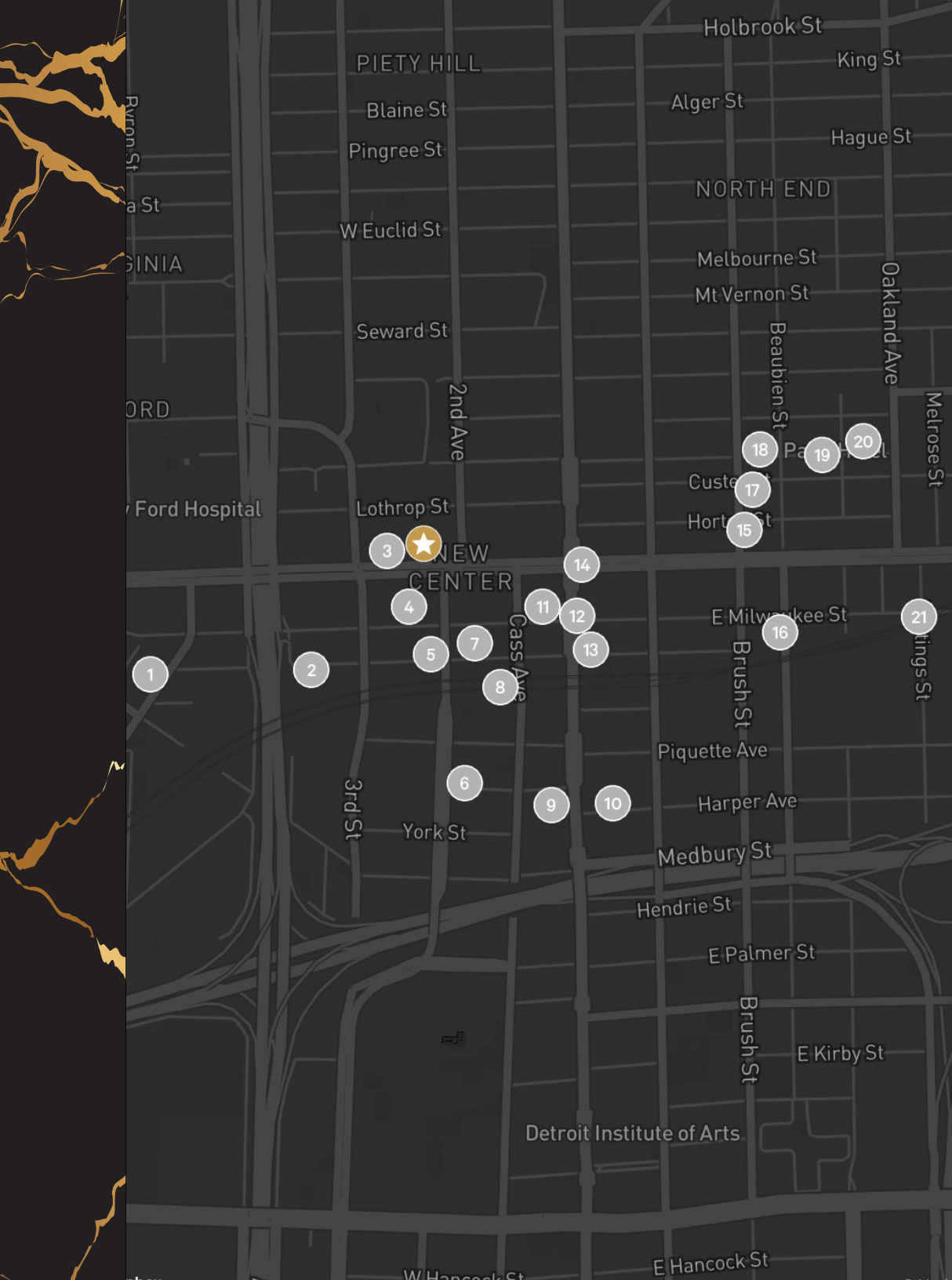
FLOOR 1

UP TO 27,643 RSF



UP TO 27,643 RSF AVAILABLE





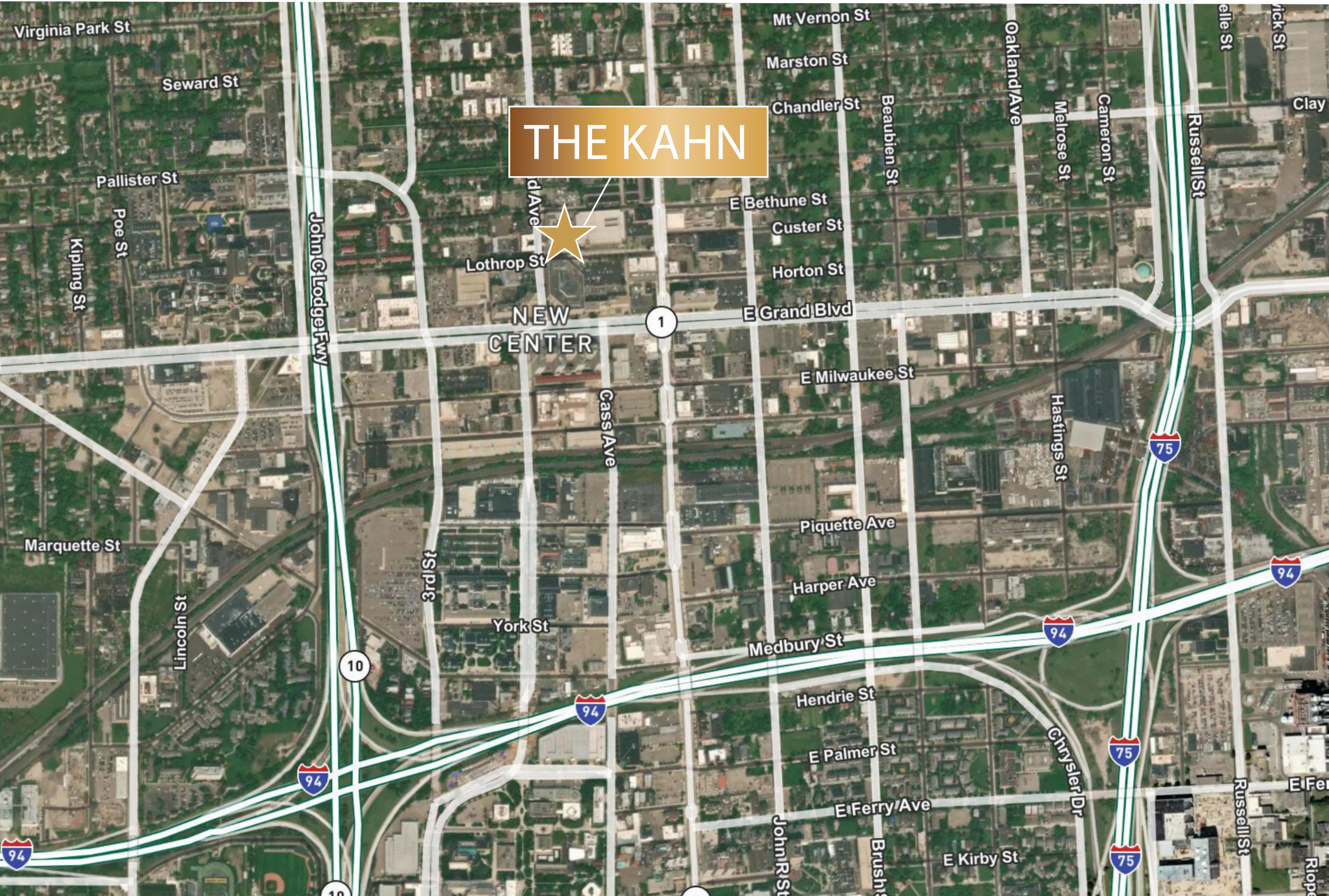
AMENITIES MAP

- ★ The Kahn Building
- 1 Henry Ford Health System
- 2 Orange Theory, Beyond Juice, Comerica Bank
- 3 Midnight Golf
- 4 Fisher Building
- 5 New Center Park
- 6 Detroit Pistons Practice Facility, Planet Fitness, Plum Market
- 7 Cadillac Place
- 8 Shinola World HQ, Center for Creative Studies
- 9 Techtown
- 10 WSU Bioscience Center
- 11 Lake Trust Credit Union, TEN Nail Bar, Urbanum, Joe Louis Kitchen
- 12 Yum Village, Boaba Fare, The Duck
- 13 Time Will Tell, Huntington Bank, Crème Brulee
- 14 New Center, Hotel St.Regis
- 15 Chroma, Milwaukee Caffe, Kiesling
- 16 Ford Piquette Plant
- 17 Oak & Reel, Freya, Replay Cafe
- 18 Jam Handy
- 19 Vault of Midnight, Boro, Some Day Gallery, Midwest Commons, Isabelle Weiss Gallery
- 20 Gathering Coffee Co., Batch Brewing, Tangent Gallery
- 21 Fisher Body Plant 400 unit residential development

BUILDING AERIAL

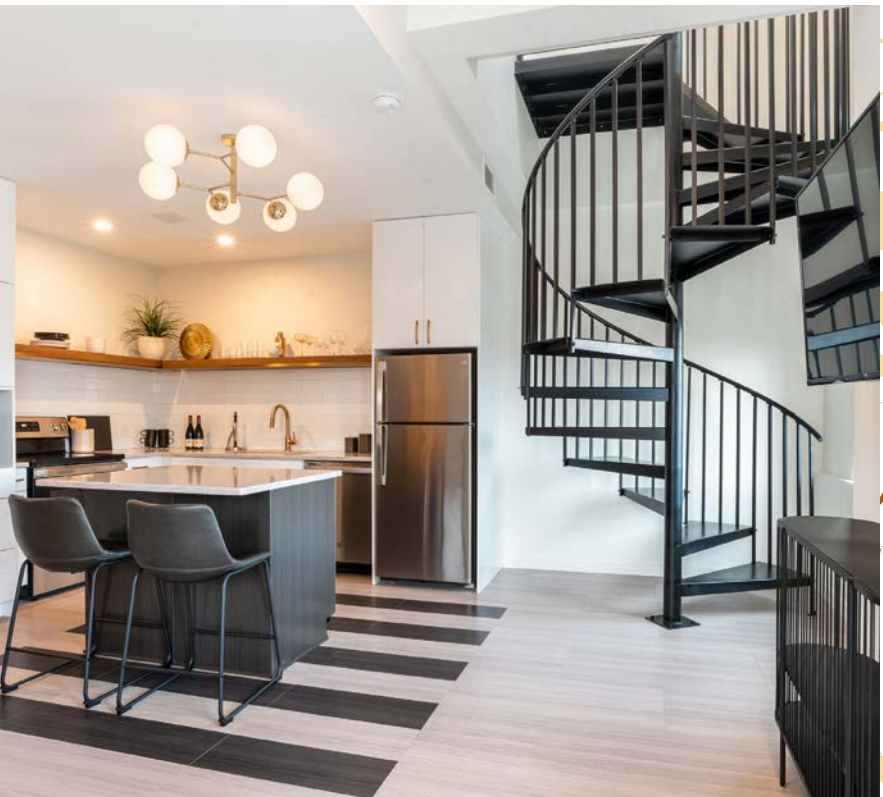


BUILDING LOCATION





LUXURY APARTMENTS





CONTACT US

Brendan George

Senior Vice President

+1 248 351 2039

brendan.george@cbre.com

Jasper Hanifi

Senior Associate

+1 248 351 2020

jasper.hanifi@cbre.com

© 2023 CBRE, Inc. All rights reserved. This information has been obtained from sources believed reliable but has not been verified for accuracy or completeness. CBRE, Inc. makes no guarantee, representation or warranty and accepts no responsibility or liability as to the accuracy, completeness, or reliability of the information contained herein. You should conduct a careful, independent investigation of the property and verify all information. Any reliance on this information is solely at your own risk.

