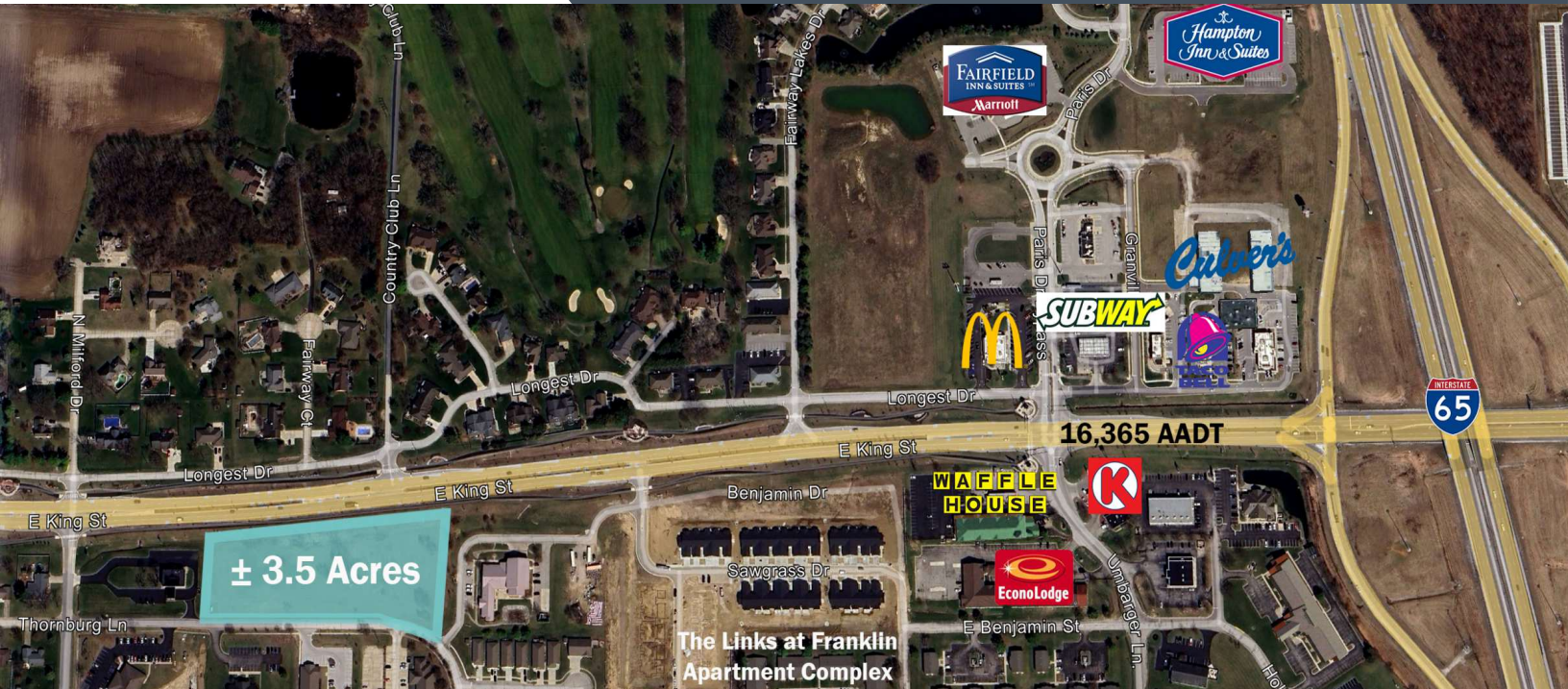


SALE

LAND



# FRANKLIN OUTLOTS



### PROPERTY HIGHLIGHTS

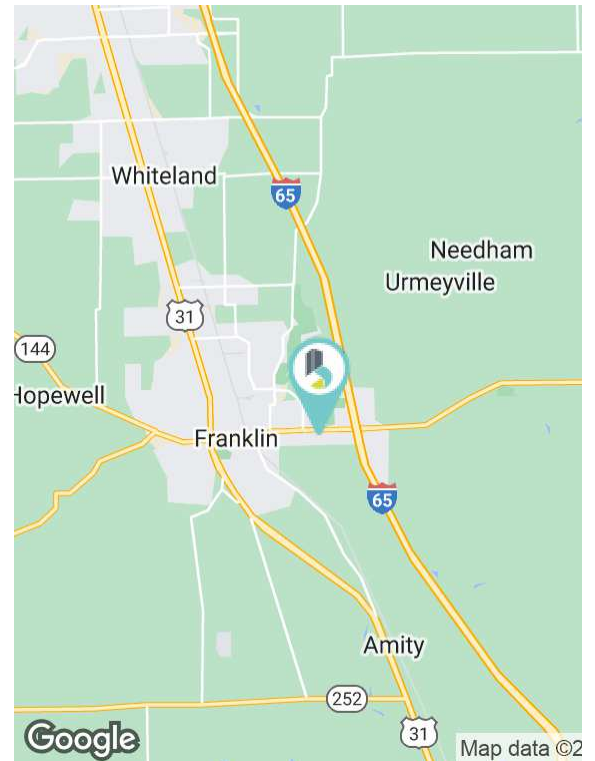
- 1.04 - 3.5 acre Commercial Development Land
- Zoned MXC - Mixed Use Commercial Corridor
- Suitable for retail, apartments, and/or mixed-use
- Major SR-44 Visibility
- Immediate access & proximity to I-65
- Rapidly growing Johnson County, IN

SALE PRICE

\$1,450,000

Lot Size:

± 3.5 Acres



**BRADLEY COMPANY**  
 310 E. 96th St., Suite 100  
 Indianapolis, IN 46240  
 317.663.6000

**SAM KAROZOS**  
 Vice President  
 317.371.0128  
 skarozos@bradleyco.com

**MICHAEL HARRIGAN, SIOR**  
 Senior Vice President | Director of Land Services  
 317.439.3452  
 mharrigan@bradleyco.com



BRADLEYCO.COM

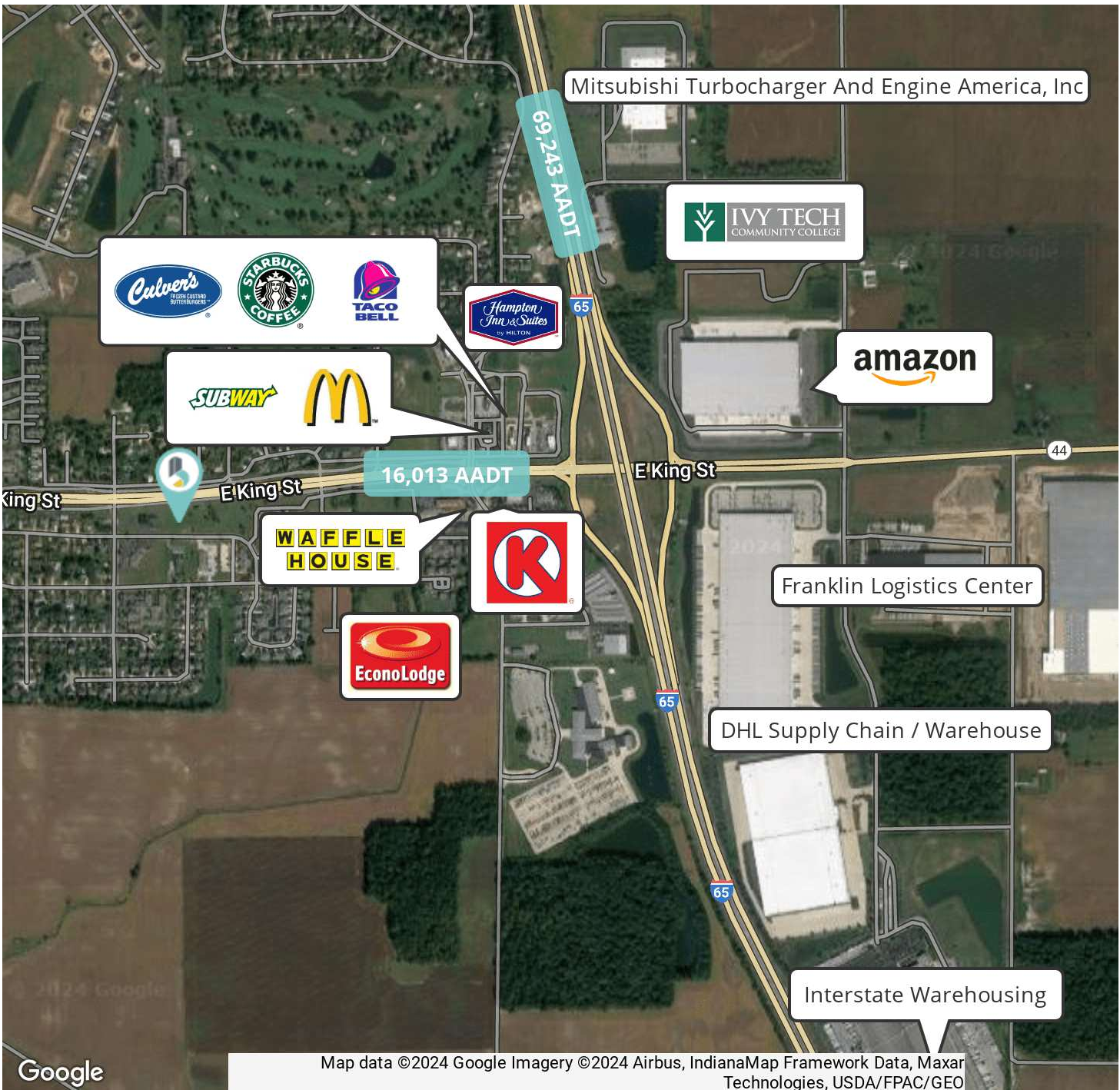




1760 THORNBURG LN, FRANKLIN, IN 46131

SALE

LAND



**SAM KAROZOS**  
 Vice President  
 317.371.0128  
 skarozos@bradleyco.com

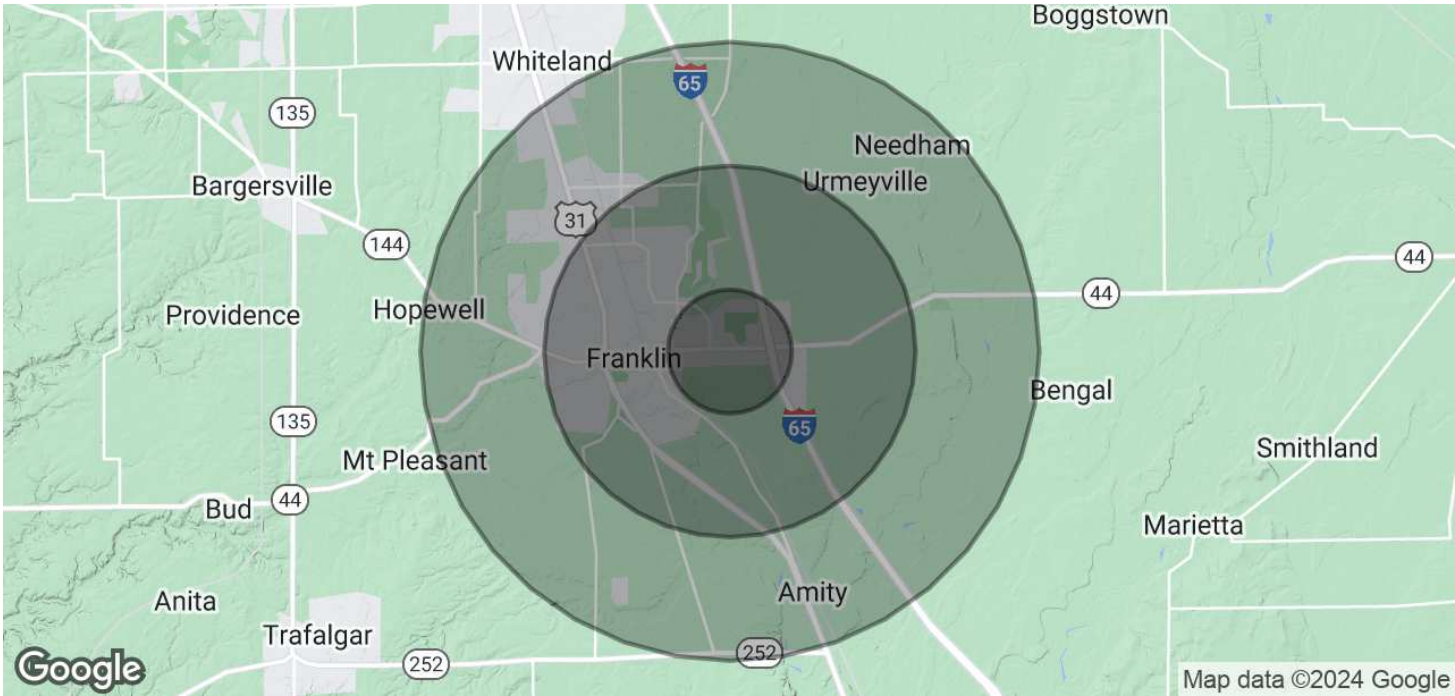
**MICHAEL HORRIGAN, SIOR**  
 Senior Vice President | Director of Land Services  
 317.439.3452  
 mhorrigan@bradleyco.com



## 1760 THORNBURG LN, FRANKLIN, IN 46131

SALE

LAND



POPULATION	1 MILE	3 MILES	5 MILES
Total Population	2,099	18,976	30,767
Average Age	47.8	38.6	36.9
Average Age (Male)	43.8	37.8	36.7
Average Age (Female)	52.5	40.8	37.9

HOUSEHOLDS & INCOME	1 MILE	3 MILES	5 MILES
Total Households	854	7,634	11,880
# of Persons per HH	2.5	2.5	2.6
Average HH Income	\$82,476	\$64,851	\$72,617
Average House Value	\$204,745	\$147,366	\$161,129

2020 American Community Survey (ACS)

**SAM KAROZOS**  
 Vice President  
 317.371.0128  
 skarozos@bradleyco.com

**MICHAEL HORRIGAN, SIOR**  
 Senior Vice President | Director of Land Services  
 317.439.3452  
 mhorrigan@bradleyco.com

©2024 Bradley Company, LLC and affiliates. Use of any third party name or mark is for informational purposes only and does not indicate sponsorship or endorsement by such party. Not all information has been independently verified, and the presenting broker makes no guarantee about its accuracy. Any projections, opinions, or estimates are for example only. Before completing a real estate transaction, you and your advisors should conduct an independent investigation of the property to determine its suitability for your needs.