



Colliers

For Lease

±58,317 SF

Contact

Clyde Stauff, SIOR

Vice Chair
+1 949 724 5543
clyde.stauff@colliers.com
License No. 00464008

Scott Sanders, SIOR

Executive Vice President
+1 909 937 6322
scott.sanders@colliers.com
License No. 01481466

Colliers

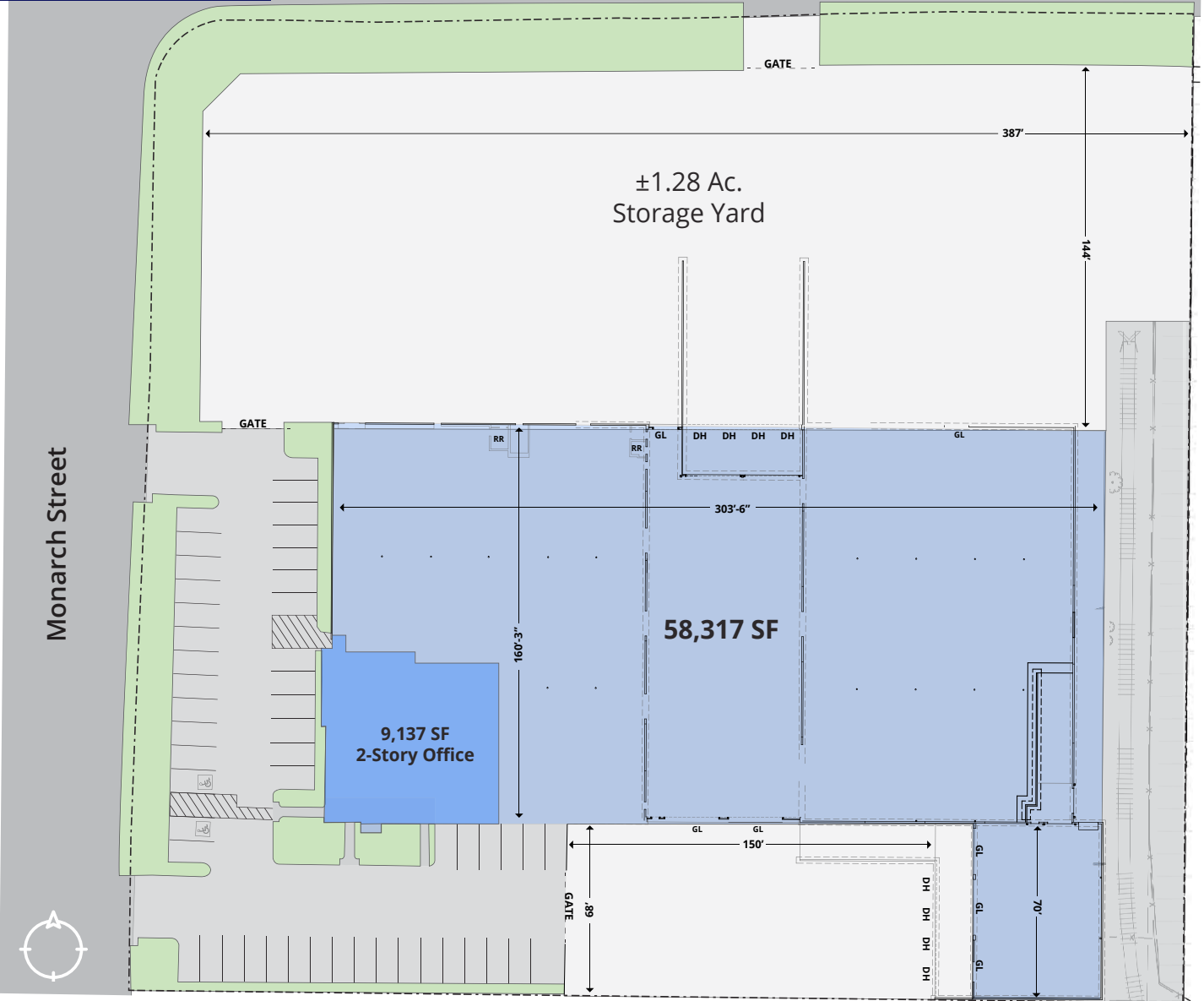
3 Park Plaza, Suite 1200
Irvine, CA 92614
Main: +1 949 724 5500
colliers.com
License No. 01908231



11552 Monarch Street Garden Grove, CA

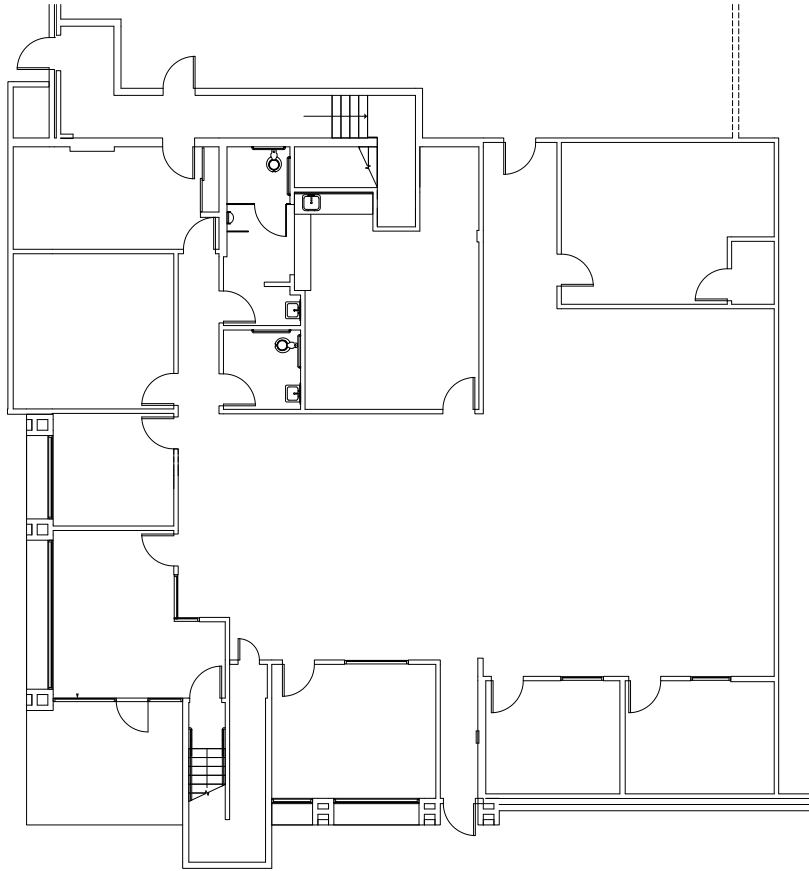
- 58,317 SF freestanding industrial building
- 3.70 Acre land parcel
- Office Area - 1st Floor 4,815 SF
- Office Area - 2nd Floor 4,322 SF
- Total Office Area 9,137 SF
- 24' minimum clear height
- 8 dock high loading positions
- 7 grade level openings
- Covered loading dock
- ESFR sprinkler system
- 800 amps, 277/480 volt, 3 phase - Expandable to 2,500 amps
- LED warehouse lighting and exterior lighting
- 49 car parking
- Large secured storage yard (approximately 1.28 acres)
could possibly accommodate up to 100 additional parking stalls
- Immediate access to 22, 405 & 605 Freeways

Site Plan

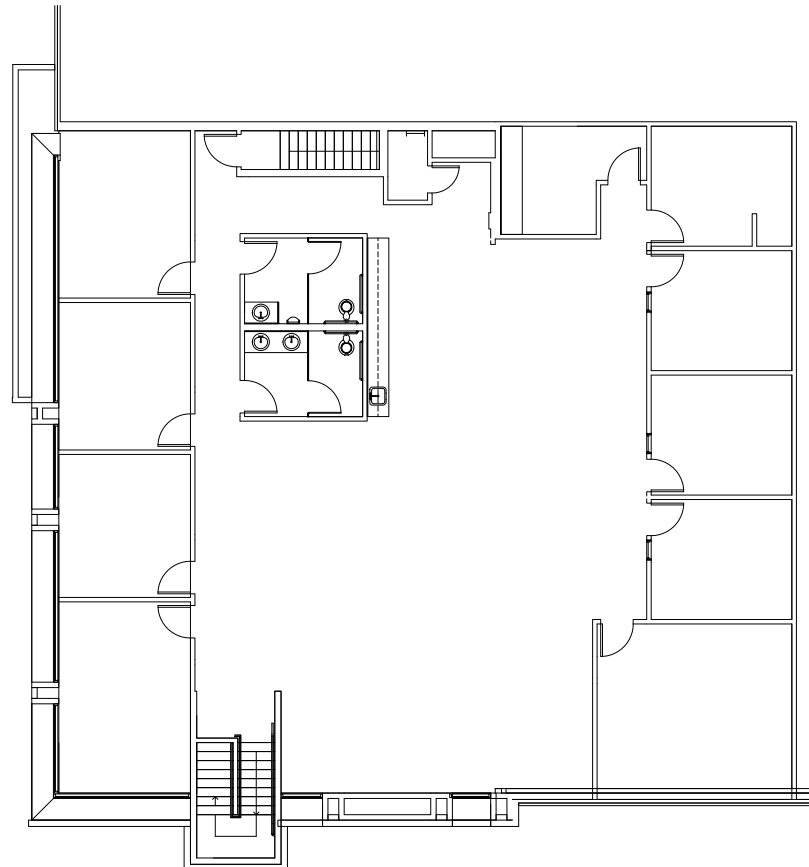


Office Floor Plan

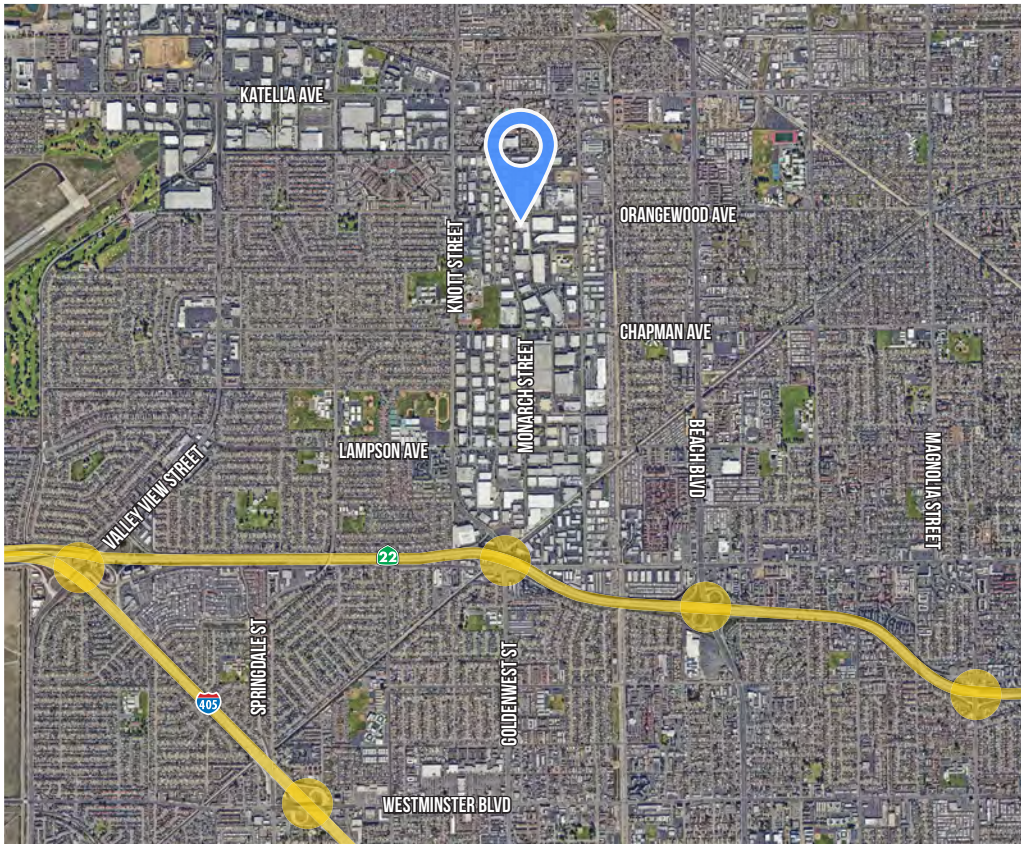
First Floor Office
4,815 SF



Second Floor Office
4,322 SF







Contact us:

Clyde Stauff, SIOR

Vice Chair
+1 949 724 5543
clyde.stauff@colliers.com
License No. 00464008

Scott Sanders, SIOR

Executive Vice President
+1 909 937 6322
scott.sanders@colliers.com
License No. 01481466

Colliers

3 Park Plaza
Suite 1200
Irvine, CA 92614
Main: +1 949 724 5500
colliers.com
License No. 01908231



BORSTEIN
ENTERPRISES