

FOR SALE

1.19 +/- ACRES OF COMMERCIAL LAND

Heartland Blvd., Ionia, MI



PROPERTY INFORMATION

- 1 commercial parcel totaling 1.19 +/- acres
- Total Frontage on Heartland Blvd: 241'
- Adjacent Uses: National restaurant chains, auto parts store, Snap Fitness Ionia, The Abbey Apartments, Popeyes Louisiana Kitchen, Meijer, among others
- Zoning: Many options for potential use



For more information on this property, please contact:

MICHAEL SHAPIRO

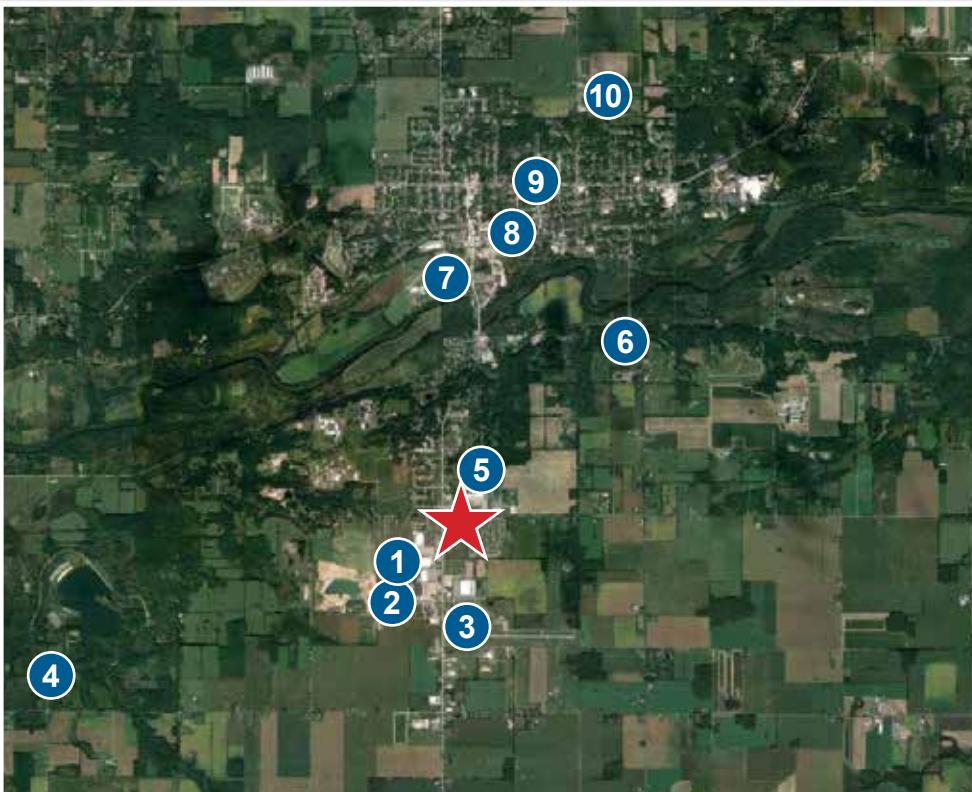
248.865.0066

ASKING PRICE - \$224,900

For more information regarding this property or our other listings, please visit our website,
www.mshapirorealestate.com

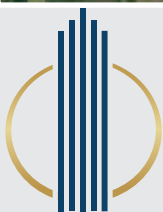
LOCATION

Heartland Blvd., Ionia, MI



Local Businesses and Attractions

1. Meijer
2. Walmart Supercenter
3. Ionia County Airport
4. Ionia State Recreation Area
5. Ionia High School
6. Shadow Ridge Golf Course
7. Ionia State Fairgrounds
8. Ionia Theatre
9. Ionia Middle School
10. Ionia Skateland



M. SHAPIRO
REAL ESTATE GROUP

For more information on this property, please contact:

MICHAEL SHAPIRO

248.865.0066