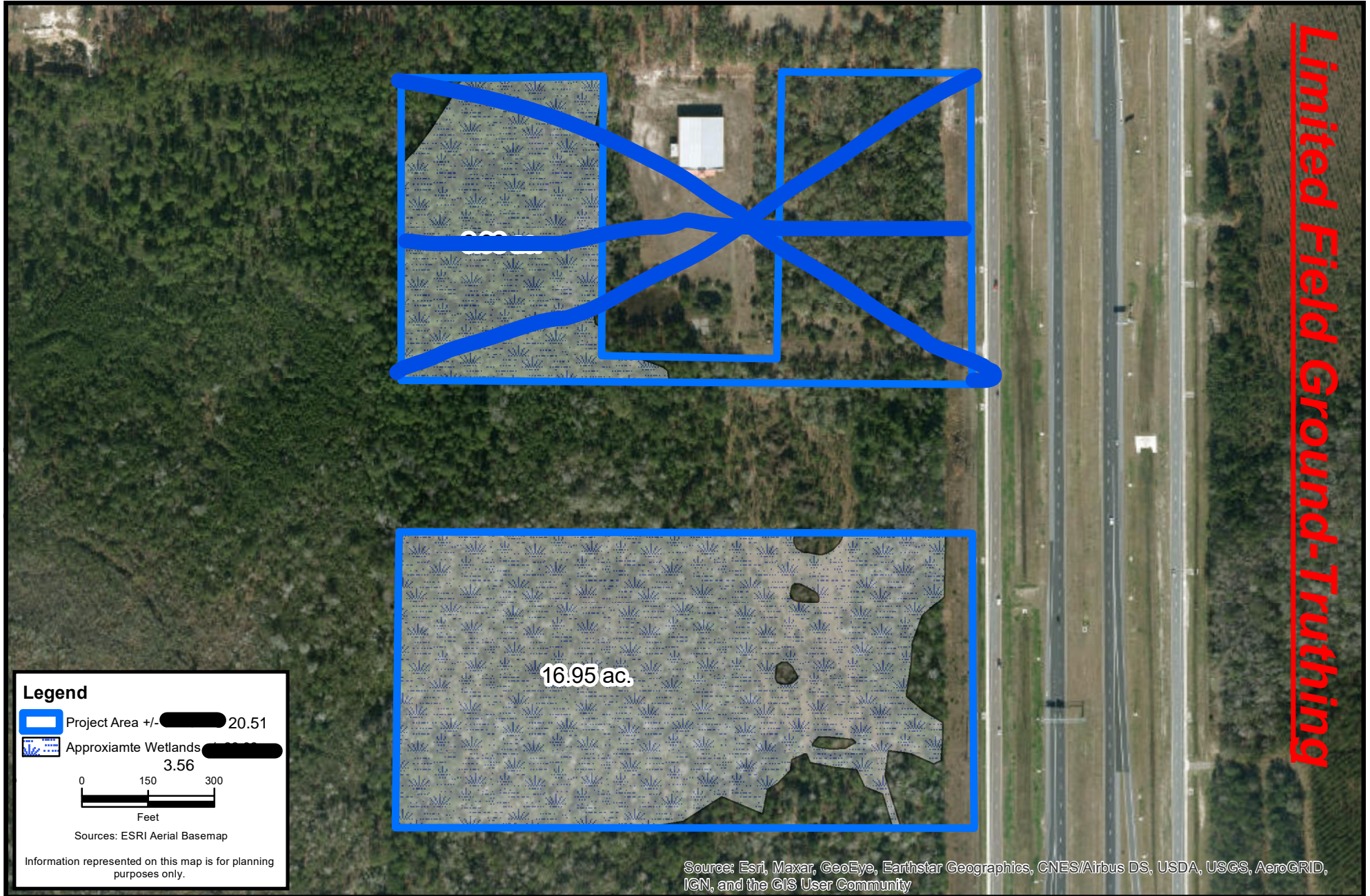


Limited Field Ground-Truthing



Source: Esri, Maxar, GeoEye, Earthstar Geographics, CNES/Airbus DS, USDA, USGS, AeroGRID, IGN, and the GIS User Community

**CARTER ENVIRONMENTAL SERVICES, INC.**  
**CES** 42 Masters Drive  
St. Augustine, FL 32084  
904-540-1786  
www.carterenv.com

Preliminary Wetland Assessment Map with Limited Ground-Truthing

### Spindler Discovery



Project: 5.21698

Clay County, FL

Date: Jan 28 2022

Figure: 1