



1401 Pearl Street

Boulder, CO

Lower-Level Retail Space on Pearl Street

Chris Boston, CCIM, MBA

cboston@gibbonswhite.com
(303) 586-5930

Kegan McNutt

kegan@gibbonswhite.com
(303) 586-5929

www.gibbonswhite.com

[Property Info & Gallery](#)

[View Map](#)

Available Space	3,990 sq. ft.
Lease Rate / sq. ft.	Negotiable

- Lower-Level Retail Space Below Avanti
- Ideal Location for Cocktail Club, Speakeasy, Live Music Venue, Pool Hall, Nightlife Destination & More
- Elevator Access
- Entrance Along 14th Street
- Existing Restrooms Within the Premises
- Great Neighboring Tenants Including: Avanti, Oak, Postino, Illegal Pete's, Black Diamond, Montbell & Many Others

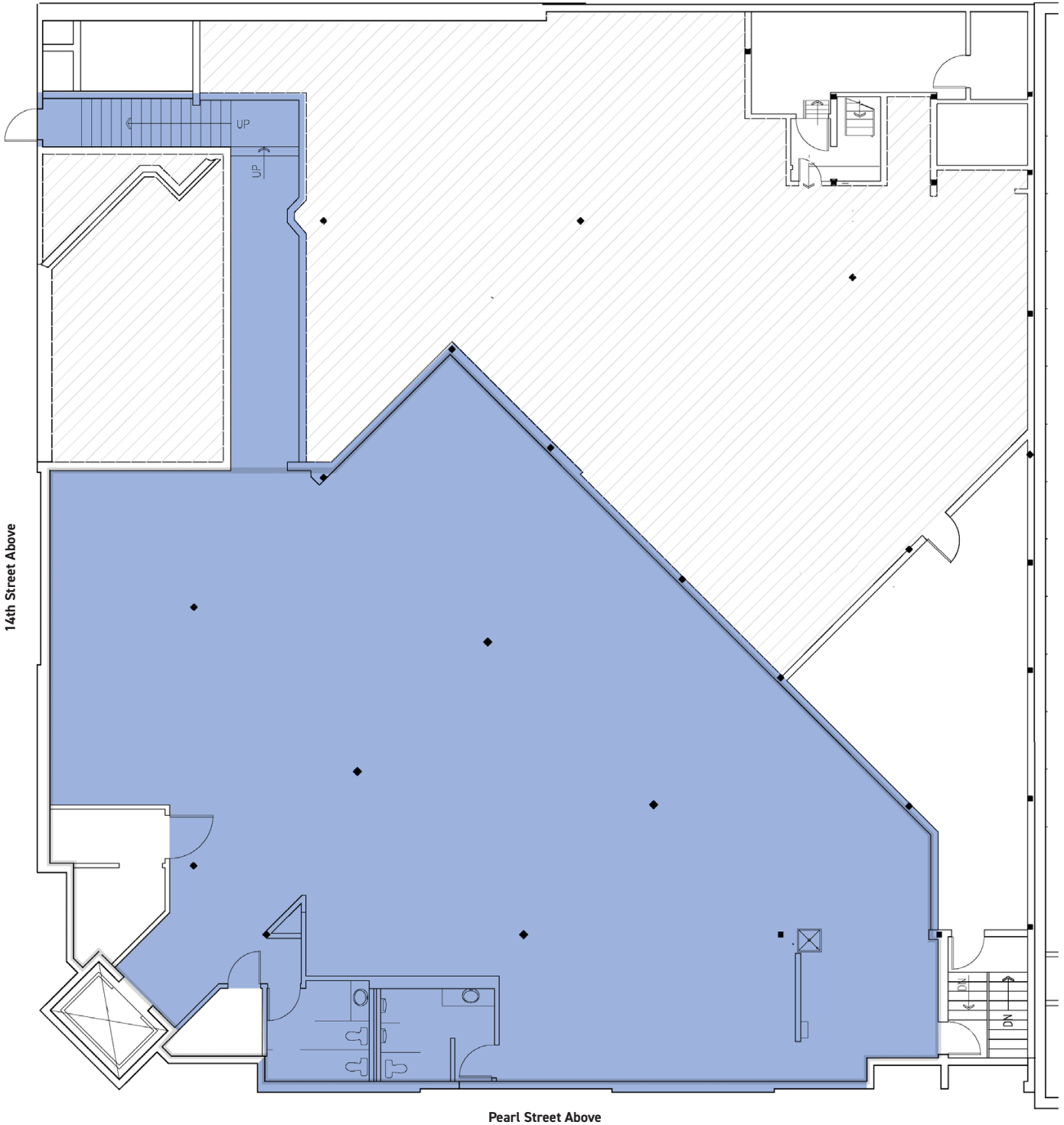


2305 Canyon Blvd, Suite 200, Boulder, CO 80302 • (303) 442-1040

The information included has been obtained from sources believed reliable. While we do not doubt the accuracy, it is unverified and no representation is being made.

© 2026 Gibbons-White, Inc.

1401 Pearl Street





#1 Best Place to Live and Work in America
- Powerlytics



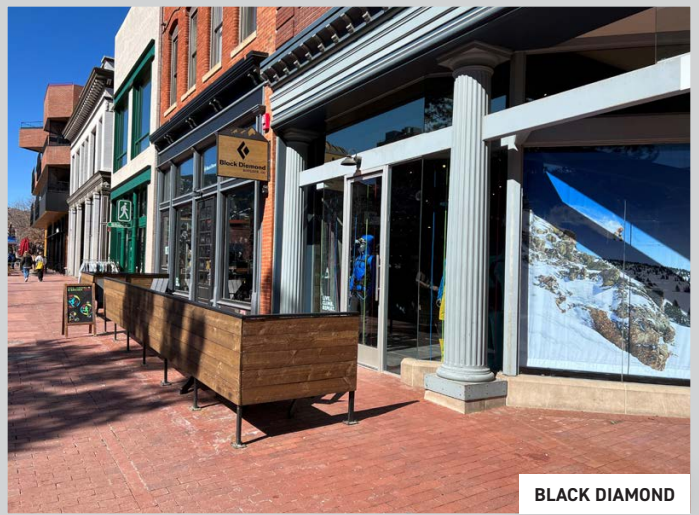
"America's Startup Capital"
- INC.



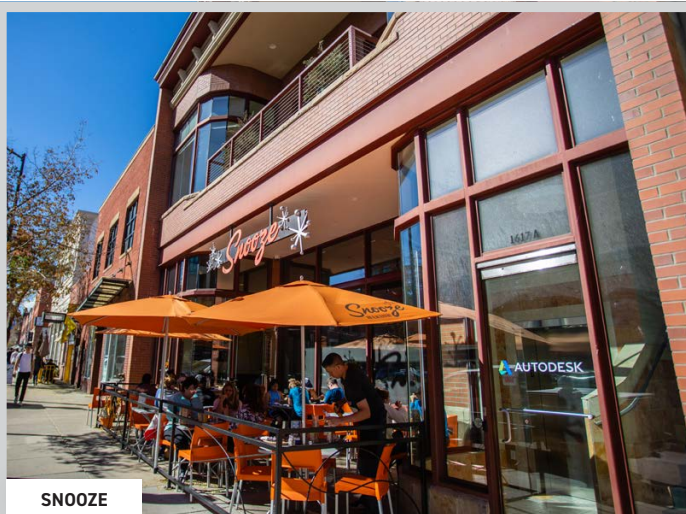
The #1 Happiest City in America
- Forbes



AVANTI



BLACK DIAMOND



SNOOZE



FRASCA