

# 2325 DOUGHERTY FERRY ROAD ST. LOUIS, MO 63122



## Contact Information

**Matt Hirsch**  
(314) 646-3305  
mhirsch@mdrea.com

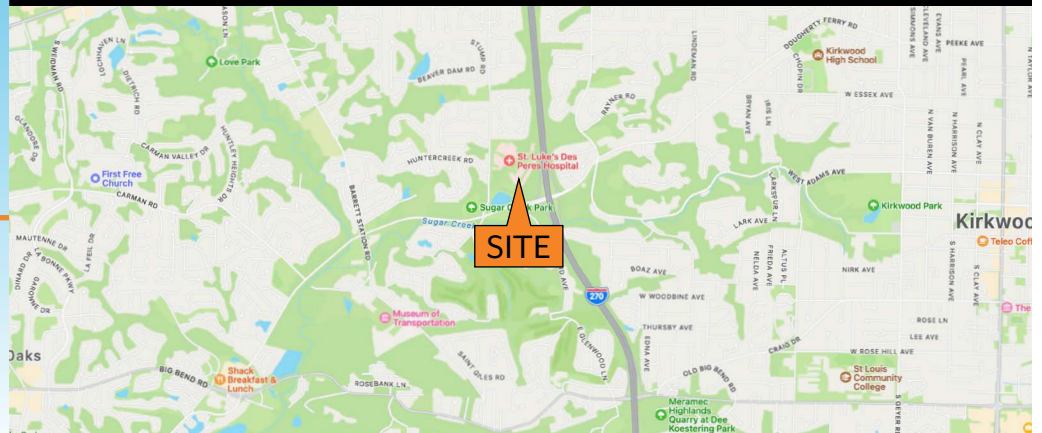
**Michael Cozad**  
(314) 646-3307  
mcozad@cozadgroup.com

## PROPERTY HIGHLIGHTS

- ▶ Medical Office space available
  - Suite 104: 3,695 SF
  - Suite 204: 2,544 SF
- ▶ Strong location with convenient access to I-270
- ▶ Directly attached to St. Luke's Des Peres Hospital via Sky Bridge
- ▶ Abundant parking
- ▶ Commons Areas recently renovated
- ▶ **Lease Rate: Contact Broker**

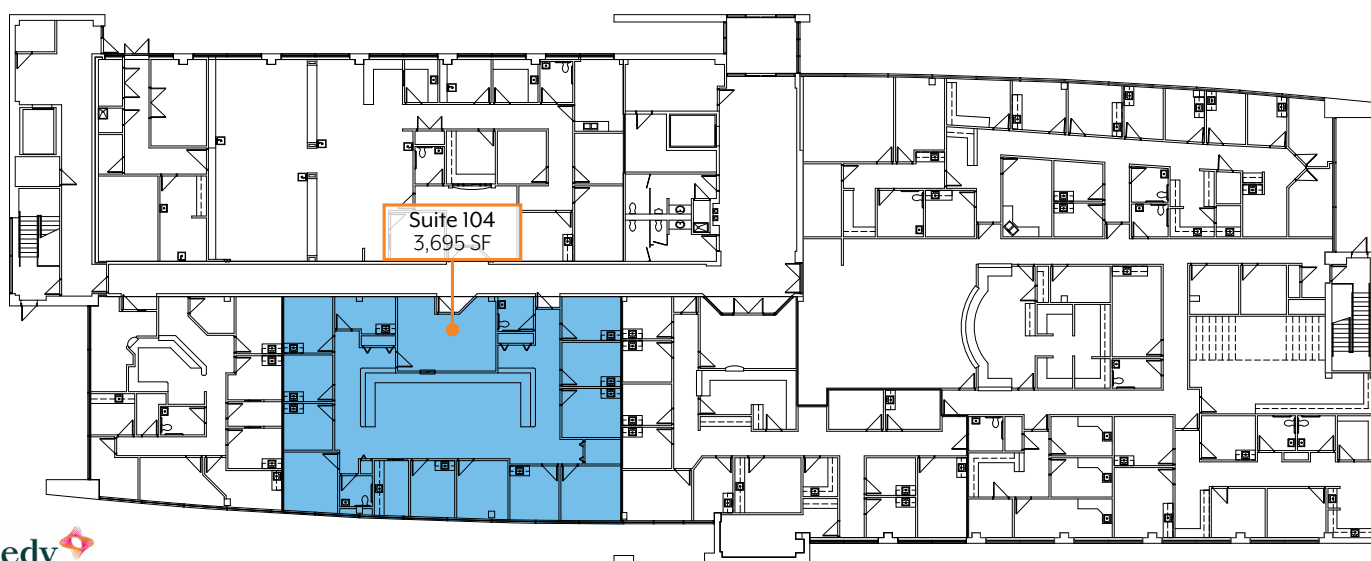
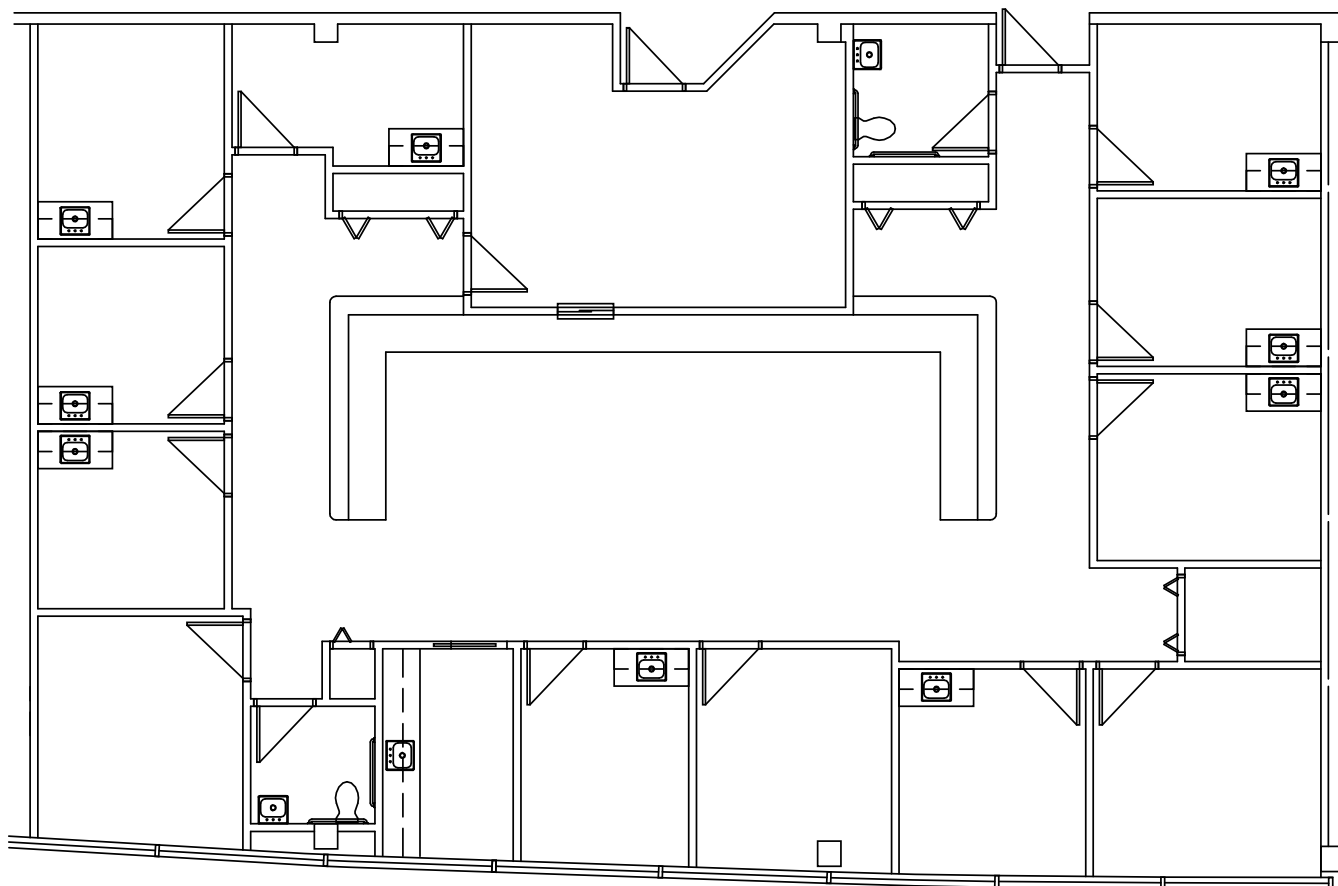


**Cozad Commercial Real Estate**  
**MD Real Estate Advisors, LLC**  
16 Sunnen Drive, Ste. 164  
St. Louis, Missouri 63143



# 2325 DOUGHERTY FERRY ROAD

ST. LOUIS, MO 63122

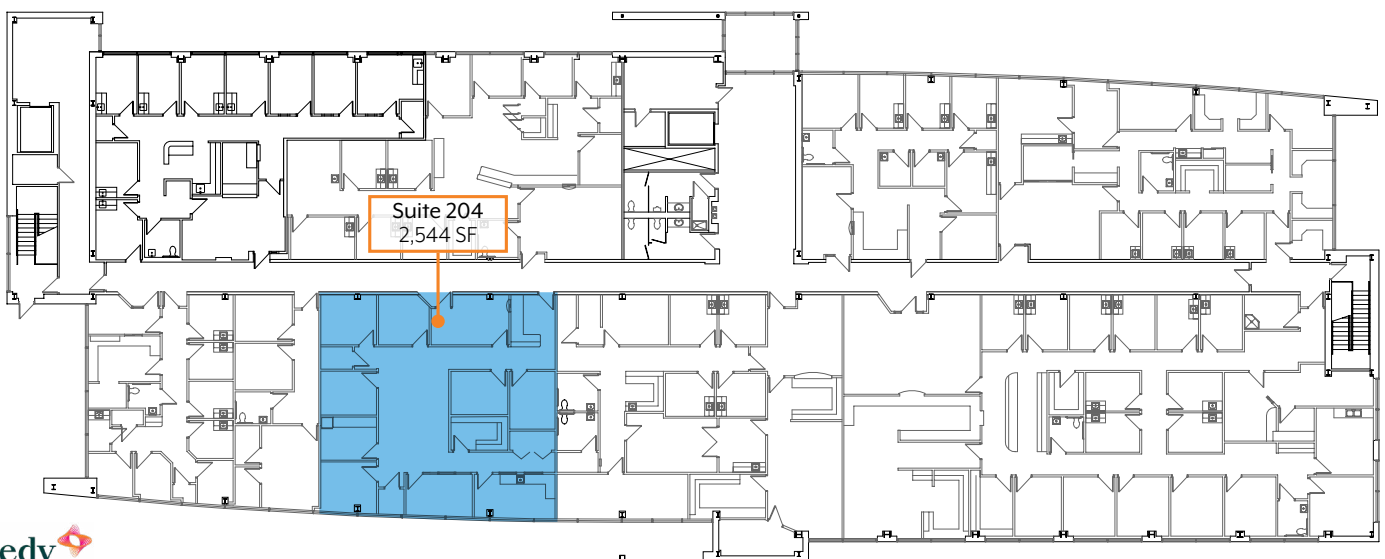
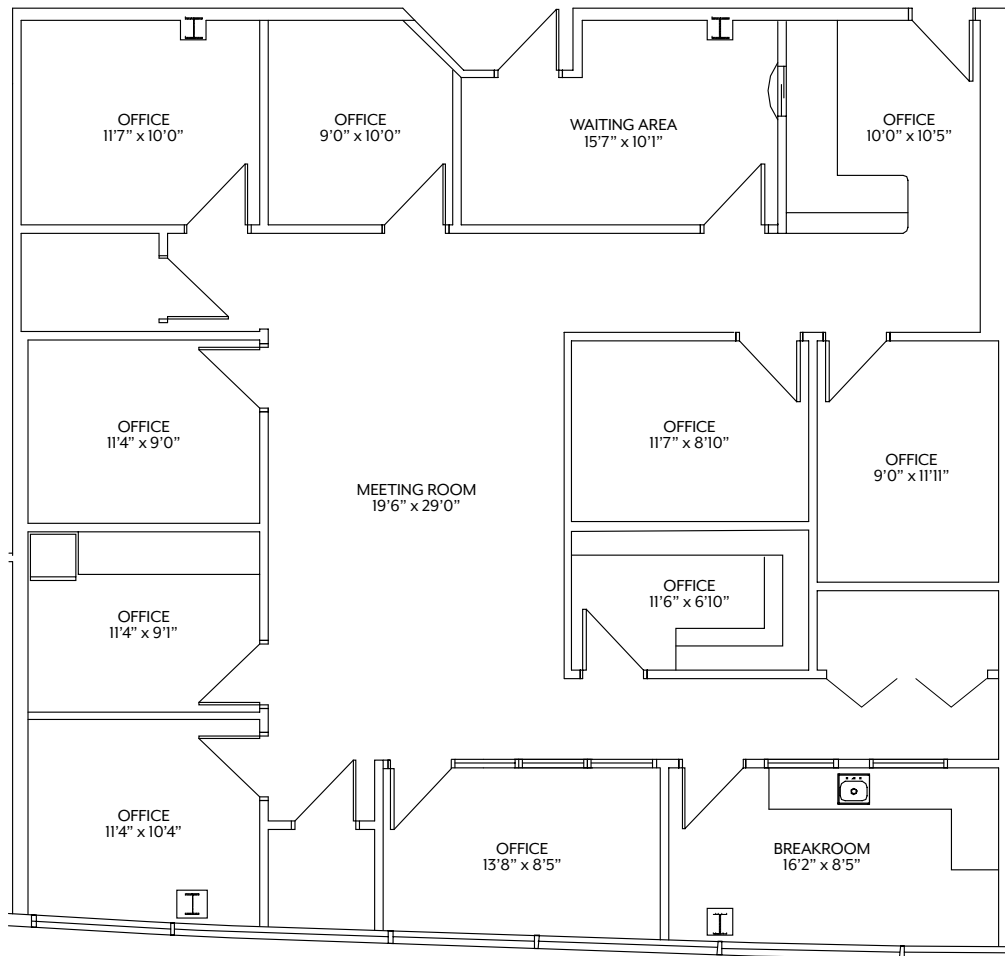


*Information herein has been obtained from the owner of the property or from other sources. The brokers do not guarantee the accuracy of this information. Sellers and brokers make no representation as to the environmental or other conditions of the property and that purchaser investigate fully.*

**COZAD COMMERCIAL REAL ESTATE**  
**MD REAL ESTATE ADVISORS**  
*A subsidiary of Cozad Commercial Real Estate, Ltd.*  
16 Sunnen Dr., Ste. 164 • St. Louis, MO 63143

# 2325 DOUGHERTY FERRY ROAD

ST. LOUIS, MO 63122



Information herein has been obtained from the owner of the property or from other sources. The brokers do not guarantee the accuracy of this information. Sellers and brokers make no representation as to the environmental or other conditions of the property and that purchaser investigate fully.

**COZAD COMMERCIAL REAL ESTATE**  
**MD REAL ESTATE ADVISORS**  
A subsidiary of Cozad Commercial Real Estate, Ltd.  
16 Sunnen Dr., Ste. 164 • St. Louis, MO 63143