

INDUSTRIAL PROPERTY FOR SALE / LEASE

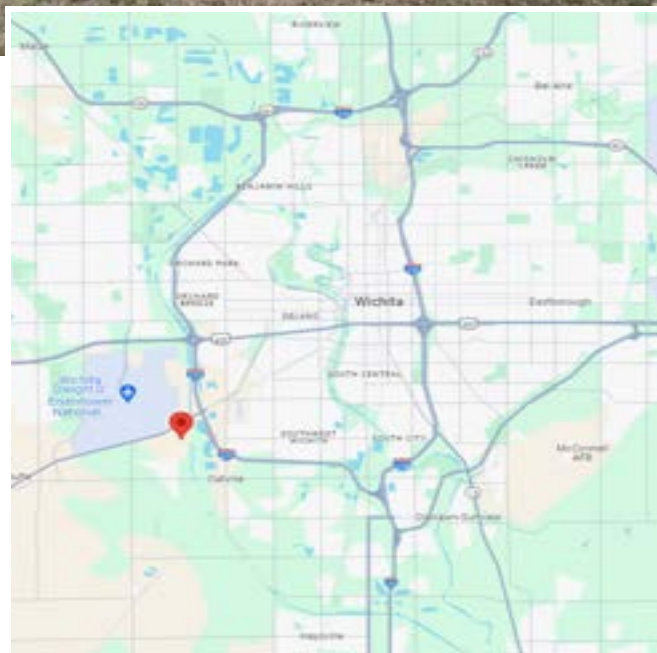


OFFERING SUMMARY

Sale Price:	\$1,800,000
Available SF:	53,904 SF
Lot Size:	4.43 Acres
Building Size:	53,904 SF

PROPERTY DETAILS

- 2 Acre Storage Yard
- Multiple Overhead Door
- Overhead Crane
- Multiple 3 Phase Panels
- 6,702 SF Enclosed Office Space
- Heated Warehouse Space
- Taxes: \$22,307.75 (2023)



DEMOGRAPHICS	1 MILE	3 MILES	5 MILES
Total Households	588	11,847	53,624
Total Population	1,733	28,340	119,451
Average HH Income	\$81,610	\$55,802	\$54,102

Roc Cyphert

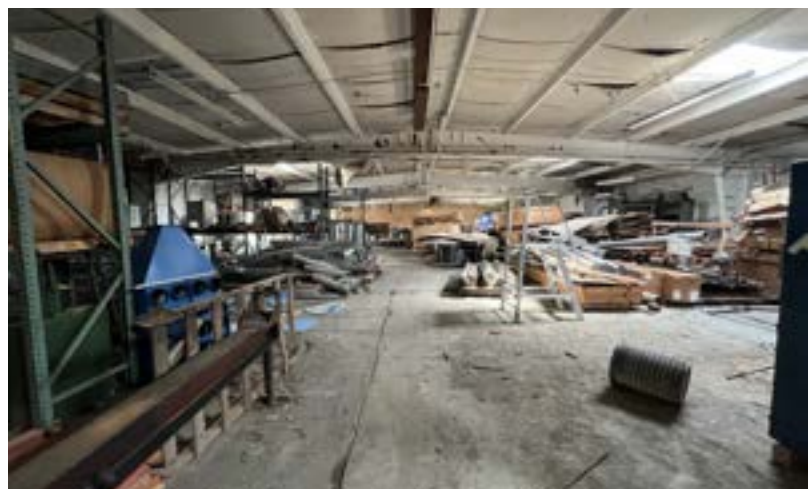
Commercial Sales Associate

O: 316.262.2442

M: 316.847.2689

rcyphert@landmarkrealestate.net

INDUSTRIAL PROPERTY FOR SALE / LEASE



Roc Cyphert

Commercial Sales Associate

O: 316.262.2442

M: 316.847.2689

rcyphert@landmarkrealestate.net



HOOVER RD

HOOVER RD

H&R PARTS

STORAGE YARD

WAREHOUSE 1

WAREHOUSE 2

OFFICE

WAREHOUSE 3





TEXTRON

SOUTHWEST BLVD

RAND

235

XPO

WHITECAP

235

heartland
Coca-Cola
BOTTLING COMPANY

H&R PARTS

SITE

SKYWARD

TEXTRON
FINANCIAL

Cessna

CNI
INDUSTRIAL

HOOVER RD

NWI

GOODYEAR

BURNHAM

LANDMARK
COMMERCIAL
REAL ESTATE

