

FOUNDRY
COMMERCIAL



ORLANDO, FL

SAND LAKE WEST

±3,680 - 10,727 RSF AVAILABLE FOR LEASE



7500 - 7829 MUNICIPAL DRIVE, ORLANDO, FL

SAND LAKE WEST PHASE III



PROPERTY FEATURES

- Well located garden office / flex with upgraded landscaping
- 100% office available
- Grade-level doors
- Suite and partial building signage available
- Individual entrance/access
- Easy access to I-4, airport, Sand Lake Road, Kirkman Road, and International Drive
- On-campus management
- 100+ restaurants within 1 mile

FOR MORE INFORMATION, PLEASE CONTACT:

ALEX ROSARIO | 407.540.7713

Partner
Alex.Rosario@foundrycommercial.com
Licensed Real Estate Broker

KEVIN WILL | 407.458.5888

Vice President
Kevin.Will@foundrycommercial.com
Licensed Real Estate Broker

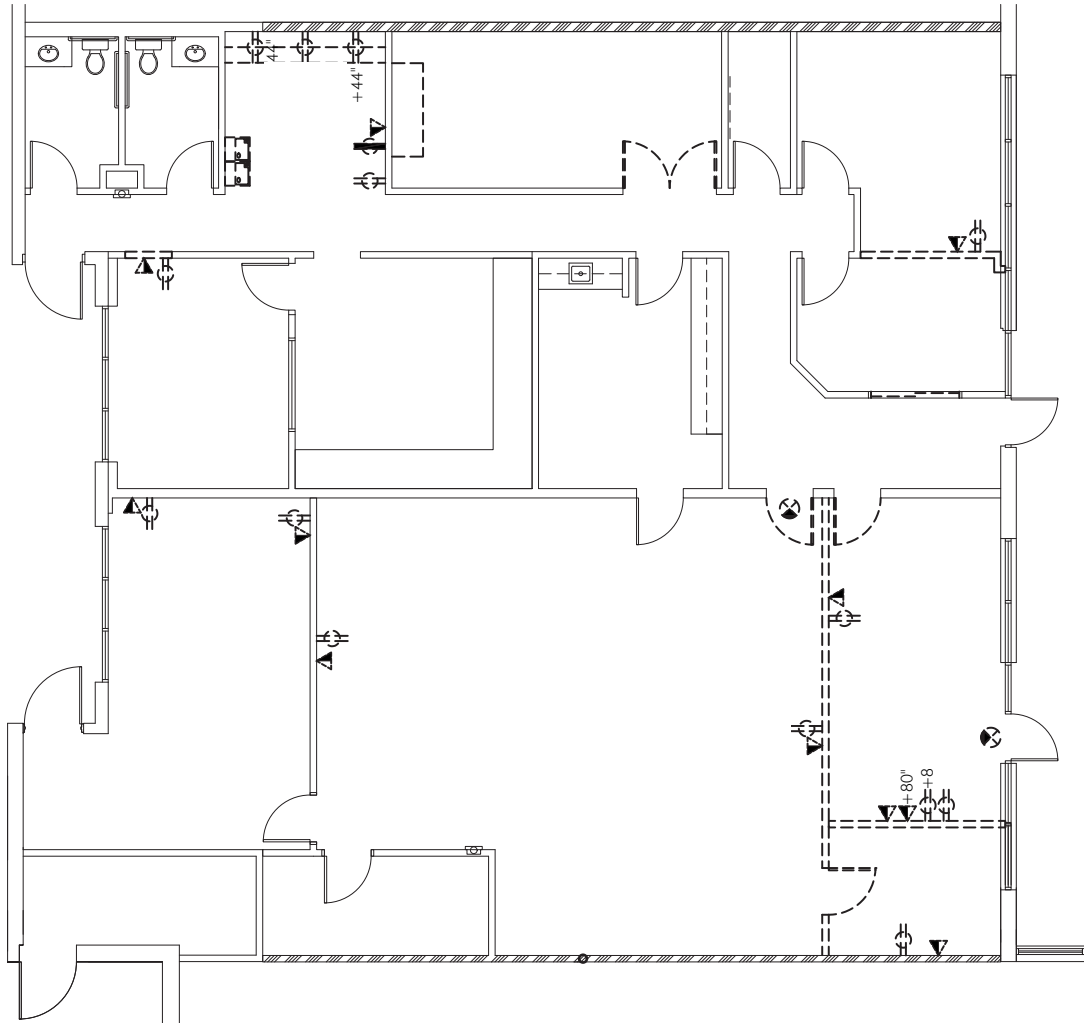
FOUNDRY
COMMERCIAL

Although the information contained herein was provided by sources believed to be reliable, Foundry Commercial makes no representation, expressed or implied, as to its accuracy and said information is subject to errors, omissions or changes.

foundrycommercial.com

SAND LAKE WEST | PHASE III S

SUITE 7688: 3,680 SF



FOR MORE INFORMATION, PLEASE CONTACT:

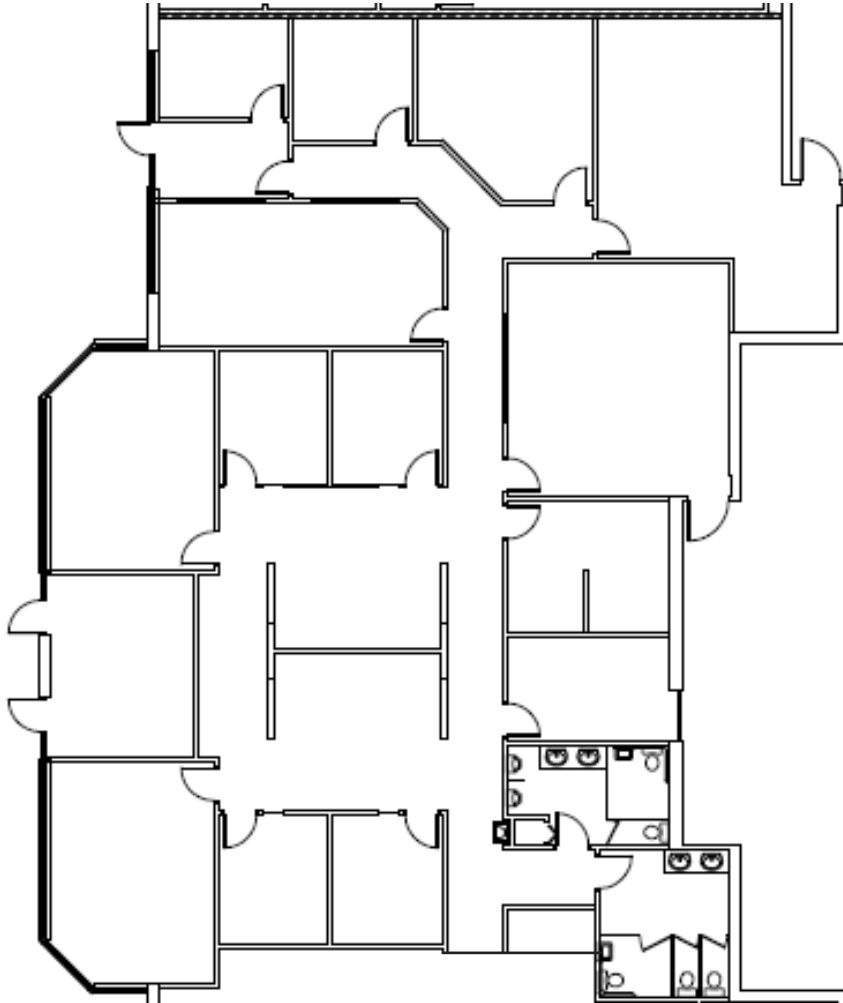
ALEX ROSARIO | 407.540.7713
Partner
Alex.Rosario@foundrycommercial.com
Licensed Real Estate Broker

KEVIN WILL | 407.458.5888
Vice President
Kevin.Will@foundrycommercial.com
Licensed Real Estate Broker



SAND LAKE WEST | PHASE III S

SUITE 7657: 5,538 SF



FOR MORE INFORMATION, PLEASE CONTACT:

ALEX ROSARIO | 407.540.7713
Partner
Alex.Rosario@foundrycommercial.com
Licensed Real Estate Broker

KEVIN WILL | 407.458.5888
Vice President
Kevin.Will@foundrycommercial.com
Licensed Real Estate Broker

Although the information contained herein was provided by sources believed to be reliable, Foundry Commercial makes no representation, expressed or implied, as to its accuracy and said information is subject to errors, omissions or changes.

FOUNDRY
COMMERCIAL

foundrycommercial.com



5422 CARRIER DRIVE, ORLANDO, FL

SAND LAKE WEST PHASE IV



PROPERTY FEATURES

- Well located garden office / flex with upgraded landscaping
- Abundant parking
- 100% HVAC
- Easy access to I-4 Sand Lake Road, Kirkman Road, and International Drive
- On-campus management
- 100+ restaurants within 1 mile

FOR MORE INFORMATION, PLEASE CONTACT:

ALEX ROSARIO | 407.540.7713

Partner
Alex.Rosario@foundrycommercial.com
Licensed Real Estate Broker

KEVIN WILL | 407.458.5888

Vice President
Kevin.Will@foundrycommercial.com
Licensed Real Estate Broker

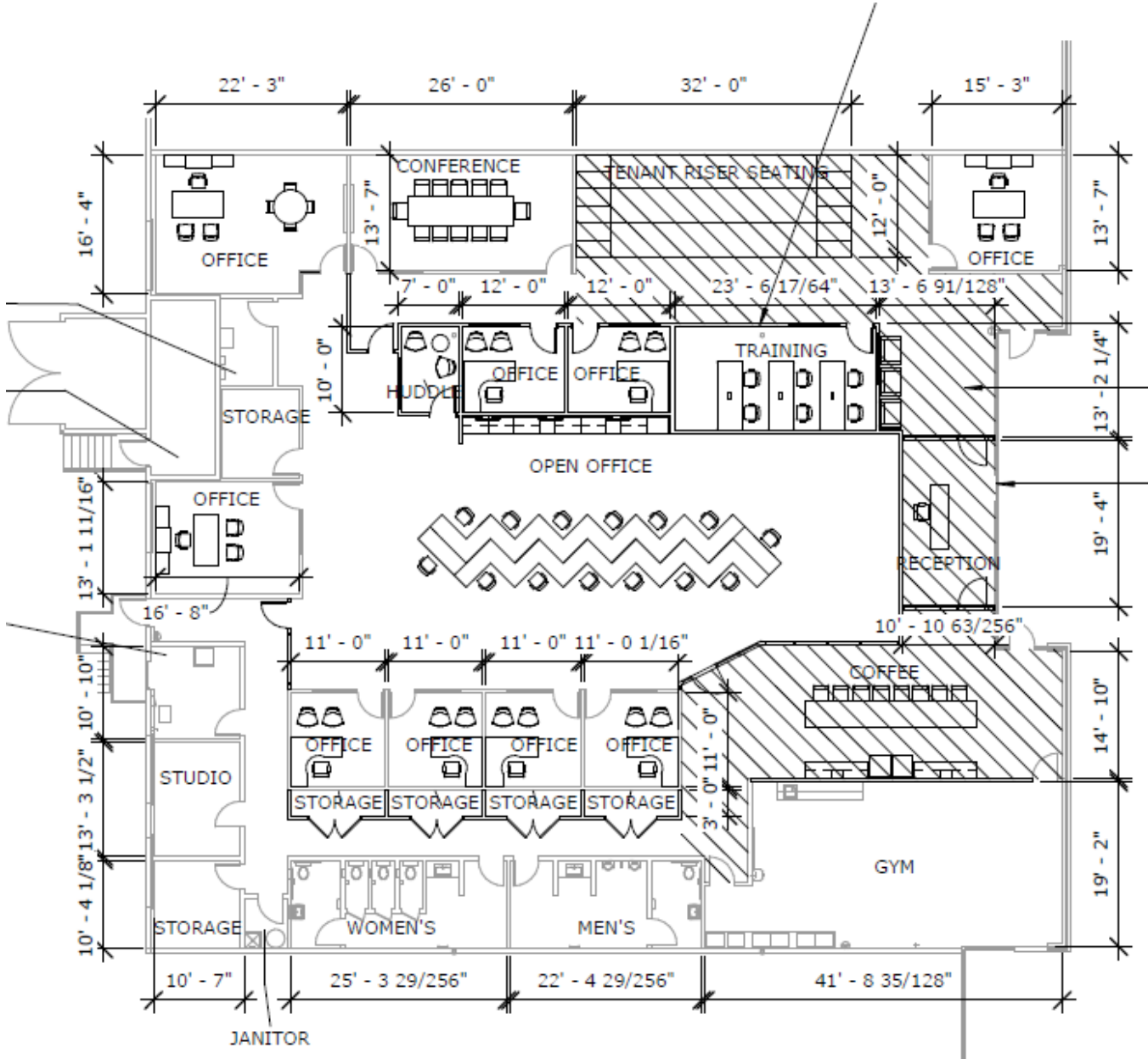
Although the information contained herein was provided by sources believed to be reliable, Foundry Commercial makes no representation, expressed or implied, as to its accuracy and said information is subject to errors, omissions or changes.

FOUNDRY
COMMERCIAL

foundrycommercial.com

SAND LAKE WEST | PHASE IV

SUITE 104-106: 9,744 SF AVAILABLE 11/1/26



FOR MORE INFORMATION, PLEASE CONTACT:

ALEX ROSARIO | 407.540.7713
 Partner
 Alex.Rosario@foundrycommercial.com
 Licensed Real Estate Broker

KEVIN WILL | 407.458.5888
 Vice President
 Kevin.Will@foundrycommercial.com
 Licensed Real Estate Broker





7305 - 7353 GREENBRIAR PARKWAY ORLANDO, FL
**SAND LAKE WEST
PHASE V**



PROPERTY FEATURES

- Modern architecture with full-height glass
- 100% office and A/C with ability for grade level roll-up doors
- Two minute drive to I-4 and International Drive
- Overflow parking lot available (4-5/1,000 parking)
- Monument signage available
- Class A finishes
- On-campus management
- 100+ restaurants within 1 mile

FOR MORE INFORMATION, PLEASE CONTACT:

ALEX ROSARIO | 407.540.7713
Partner
Alex.Rosario@foundrycommercial.com
Licensed Real Estate Broker

KEVIN WILL | 407.458.5888
Vice President
Kevin.Will@foundrycommercial.com
Licensed Real Estate Broker

FOUNDRY
COMMERCIAL

Although the information contained herein was provided by sources believed to be reliable, Foundry Commercial makes no representation, expressed or implied, as to its accuracy and said information is subject to errors, omissions or changes.

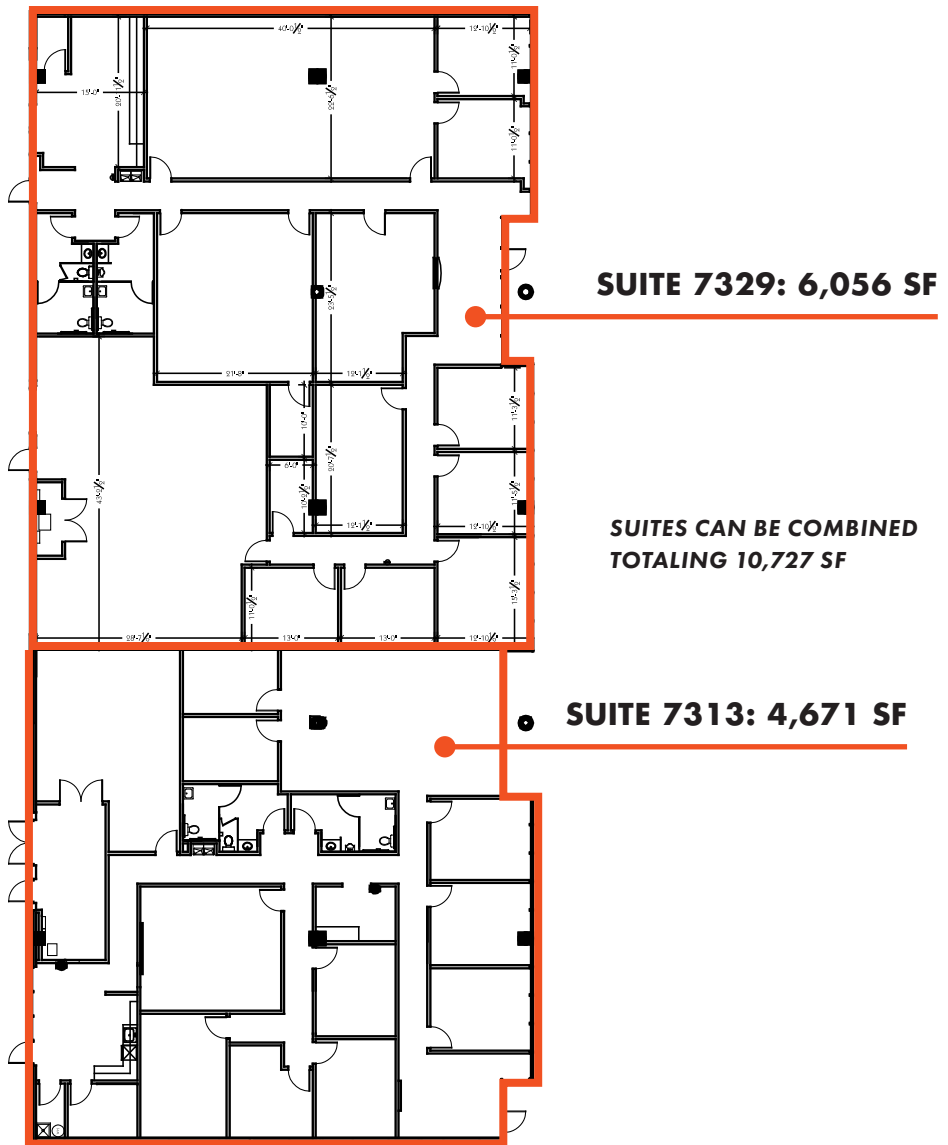
foundrycommercial.com

SAND LAKE WEST | PHASE V

SUITE 7313: 4,671 SF AVAILABLE 7/1/2026

SUITE 7329: 6,056 SF AVAILABLE 7/1/2026

SUITES CAN BE COMBINED TOTALING 10,727 SF



FOR MORE INFORMATION, PLEASE CONTACT:

ALEX ROSARIO | 407.540.7713
Partner
Alex.Rosario@foundrycommercial.com
Licensed Real Estate Broker

KEVIN WILL | 407.458.5888
Vice President
Kevin.Will@foundrycommercial.com
Licensed Real Estate Broker

FOUNDRY
COMMERCIAL

Although the information contained herein was provided by sources believed to be reliable, Foundry Commercial makes no representation, expressed or implied, as to its accuracy and said information is subject to errors, omissions or changes.

foundrycommercial.com