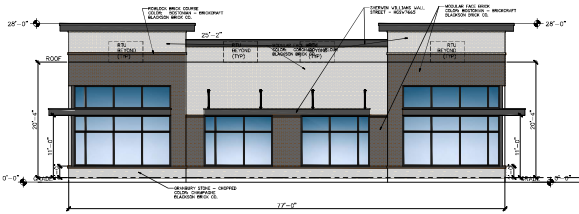
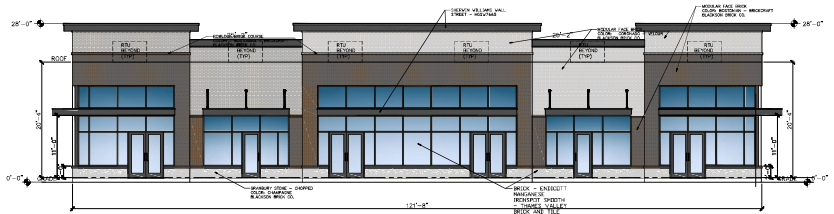


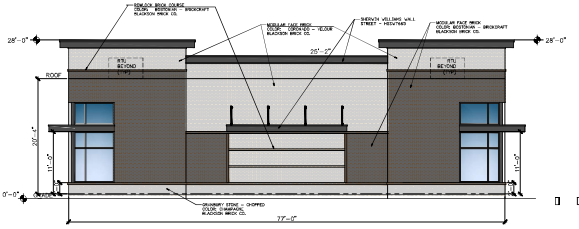
WEST FRISCO SQUARE RETAIL SHELL BUILDING A



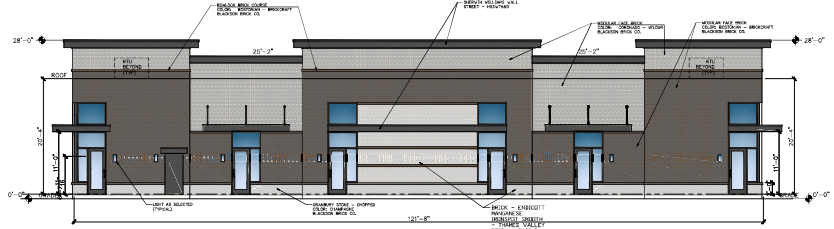
SCALE: 1/8" = 1'-0"
2 EAST ELEVATION



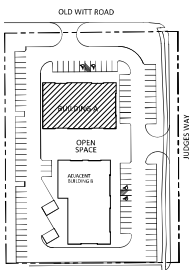
SCALE: 1/8" = 1'-0"
1 NORTH ELEVATION



4 WEST ELEVATION



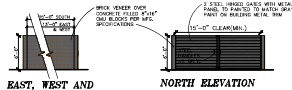
3 SOUTH ELEVATION



7 SITE KEY PLAN



6 RECESSED WINDOWS



5 DUMPSTER ELEVATIONS

FACADE CALCULATIONS

MATERIAL	EAST		NORTH		SOUTH		WEST	
	SP	WF	SP	WF	SP	WF	SP	WF
MODULAR FACE BRICK - BOSTONIAN	443	23	243	16	2,062	63	219	49
MODULAR FACE BRICK - OXFORD	243	47	239	19	399	26	717	46
PARALLEL STONE - CHECKED	140	15	566	21	194	7	142	5
GLAZING	726	18	233	17	238	63	184	49
TOTAL	1,552	63	1,281	53	2,693	106	1,242	109
GLAZING NOTE: NO SPANSEL PANELS WILL BE USED.								
GLAZING CODE:	148	35	1,147	47	152	11	204	51
TOTAL FACADE	1,700	98	1,428	100	2,845	117	1,446	160

FACADE PLAN NOTES

- 1- THIS FACADE PLAN IS FOR CONCEPTUAL PURPOSES ONLY. ALL BUILDING PLANS REQUIRE REVIEW AND APPROVAL BY DEVELOPMENT SERVICES.
- 2- ALL MECHANICAL UNITS SHALL BE CONCEALED FROM PUBLIC VIEW AS REQUIRED BY ZONING ORDINANCE.
- 3- WHEN APPLICABLE, ALL EXPOSED UTILITY LINES AND CONDUITS SHALL BE PAINTED TO MATCH THE BUILDING.
- 4- ALL SIGNAGE AREAS AND LOCATIONS ARE SUBJECT TO APPROVAL BY DEVELOPMENT SERVICES.
- 5- AN ORDER SCHEDULE OF THE BUILDING MATERIALS TO BE USED ON THE STRUCTURE SHALL BE INSTALLED AND REVIEWED BY THE CHARGED DESIGN MATERIALS SHALL NOT BE PLACED ON THE STRUCTURE UNTIL A ORDER HAS BEEN RECEIVED BY THE CHARGED DESIGNER.
- 6- AN APPROVED FACADE PLAN SHALL BE POSTED ON-SITE AT ALL TIMES.

BUILDING DIMENSIONS

LENGTH (E-W)	WIDTH (N-S)	HEIGHT (from grade)
117'-0"	77'-0"	28'-0"

FACADE MATERIALS

MATERIAL	COLOR	SUPPLIER	NOTES
MODULAR FACE BRICK	BOSTONIAN - BOSTONIAN	BLACKSTONE BRICK COMPANY	
MODULAR FACE BRICK	OXFORD - OXFORD	BLACKSTONE BRICK COMPANY	
PARALLEL STONE - CHECKED	OXFORD	BLACKSTONE BRICK COMPANY	
GLAZING	GLAZING	SHAW-WALKER	FRONTGLAZ

ACTION

APPROVED DENIED

STAFF: _____ INITIALS: _____

P&Z: _____ DATE: _____

NEIGHBORHOOD # _____

SEE THE EAST APPROVAL LETTER ON EAST FRONT SHEET FOR ANY COMMENTS ASSOCIATED WITH THE SUBMITTAL OF THIS PROJECT.

FACADE PLAN

BUILDING A
NWC FM 423 & STONEBROOK
BLOCK A, LOT 14
2.526 ACRES
CITY OF FRISCO, DENTON COUNTY
M.E.P. & P.R.R. CO. SURVEY, ABSTRACT NO. 919
PREPARED 7/29/2024
CITY PROJECT NO.: FSP24-0013