

FOR LEASE

FOUNTAIN PARK MEDICAL & PROFESSIONAL CENTER

3650 S Eastern Avenue,
Las Vegas, NV 89169



Pete Janemark, CCIM

Senior Vice President

D: 702.527.7923 | C: 702.885.7383

pete.janemark@svn.com

NV #S.76731



All SVN® offices are independently owned and operated.

PROPERTY SUMMARY



OFFERING SUMMARY

LEASE RATE:	\$1.20 SF/month (NNN)
AVAILABLE SF:	2,700 SF
YEAR BUILT:	1983
ZONING:	CP
APN:	162-13-224-001

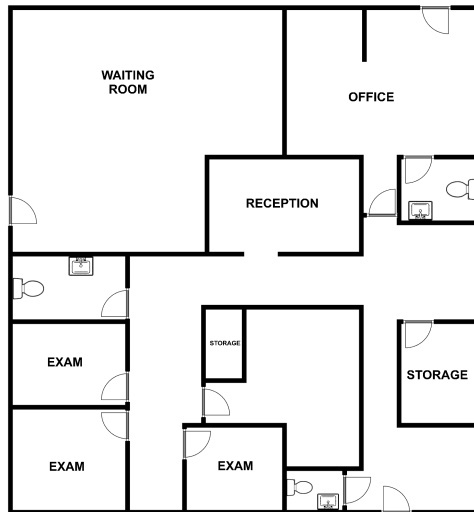
PROPERTY OVERVIEW

Fountain Park Medical and Professional Center is an enclave of twelve independent office suites on Eastern Avenue directly across the street from the Las Vegas National Golf Club, a historic residential 18-hole golf course. Access and visibility for the property is excellent directly from Eastern Avenue. Services are abundant with a short drive including CVS Pharmacy, Starbucks, Ross, DD’s Discounts, Gas stations, and medical offices.

PROPERTY HIGHLIGHTS

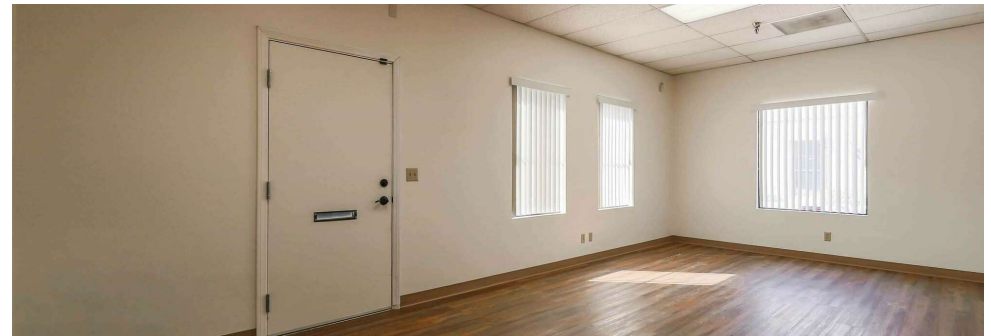
PETE JANEMARK, CCIM
O: 702.527.7923
pete.janemark@svn.com
NV #S.76731

3650 S EASTERN AVENUE - SUITE 300 - ±2,700 SF



SUITE DESCRIPTION

This ground floor unit is situated in the center of the office complex and features a reception with a separate waiting area, four or five treatment rooms, three restrooms, a private office with a fireplace, and an x-ray room. Lots of windows, three entrances, lots of light, and new vinyl planking flooring throughout.



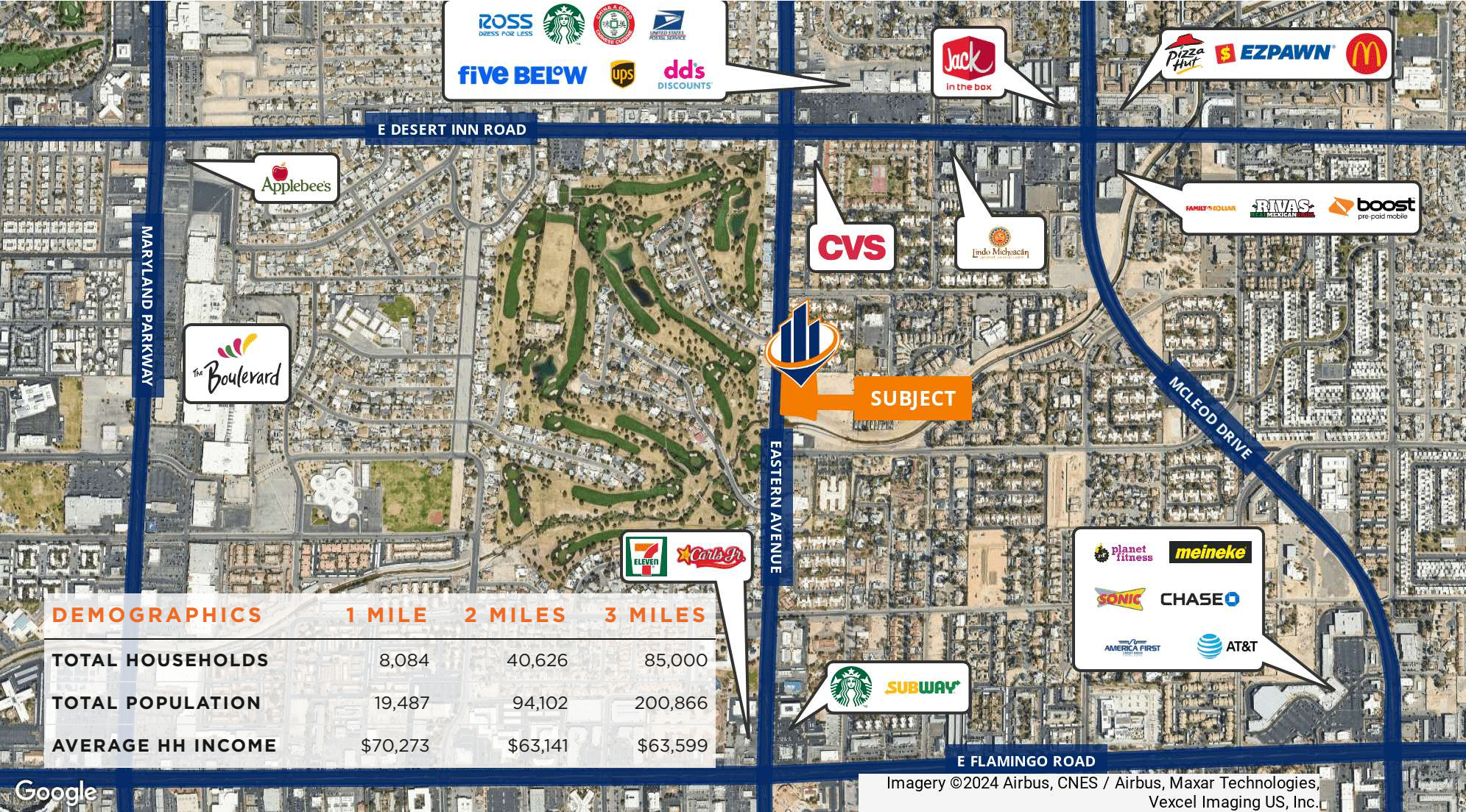
PETE JANEMARK, CCIM

O: 702.527.7923

pete.janemark@svn.com

NV #S.76731

RETAILER MAP



PETE JANEMARK, CCIM
O: 702.527.7923
pete.janemark@svn.com
NV #S.76731