

Rosemont Park

Plan for Additional
Units



**BERKSHIRE
HATHAWAY**
HOMESERVICES

PROFESSIONAL
REALTY



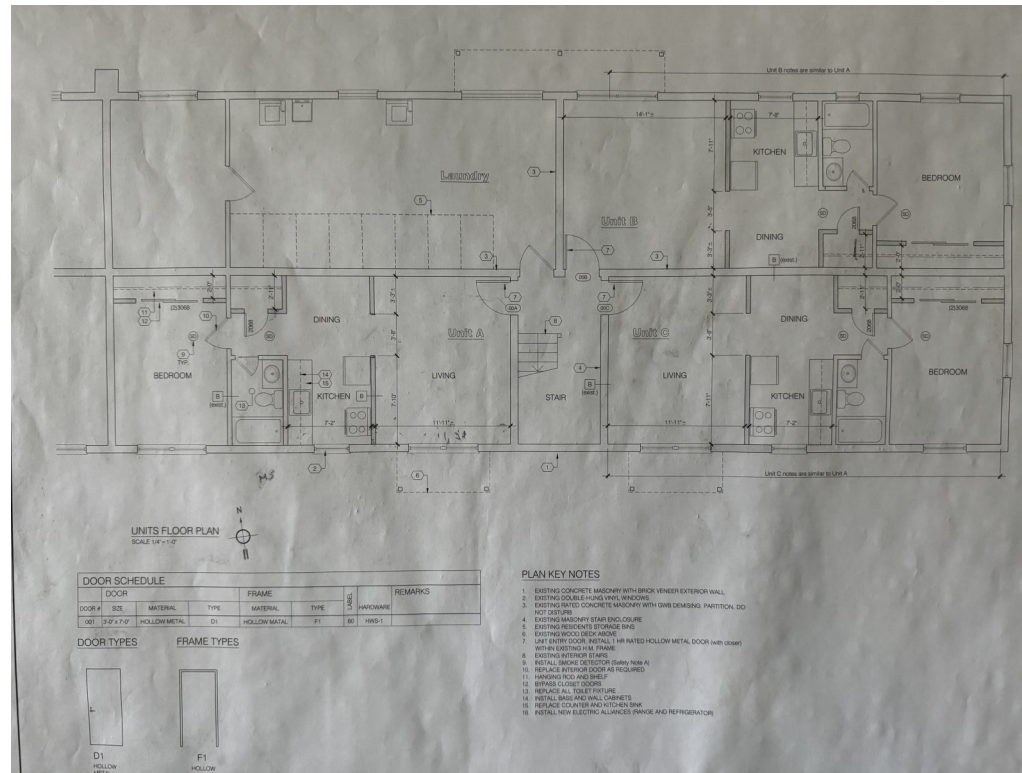
HOME IN CINCY
SALES AND LEASING



Addition of Three Additional Units in the 817 Building

There are three unfinished spaces in the lower level of the 817 Building. At this time the plans are complete and approved by City of Cincinnati and the metal framing is complete.

Each unit will bring an additional \$900 per month, \$32,400 annually. The buildout for each unit is estimated at \$25,000 per unit. This includes the addition of three new electric meters.



**BERKSHIRE
HATHAWAY**
HOMESERVICES

PROFESSIONAL
REALTY



HOME IN CINCY
SALES AND LEASING

Addition of Three Additional Units in the 817 Building



View From Common Hallway into the Living Room



View From Living Room into Kitchen



Addition of Three Additional Units in the 817 Building



View From Hallway into the Bedroom



Bedroom Closet

