

OFFICE SPACE FOR LEASE

TOWN CENTER PLAZA

515 & 525 CABRILLO PARK DRIVE
1901 & 1971 E 4TH STREET
SANTA ANA, CA 92701



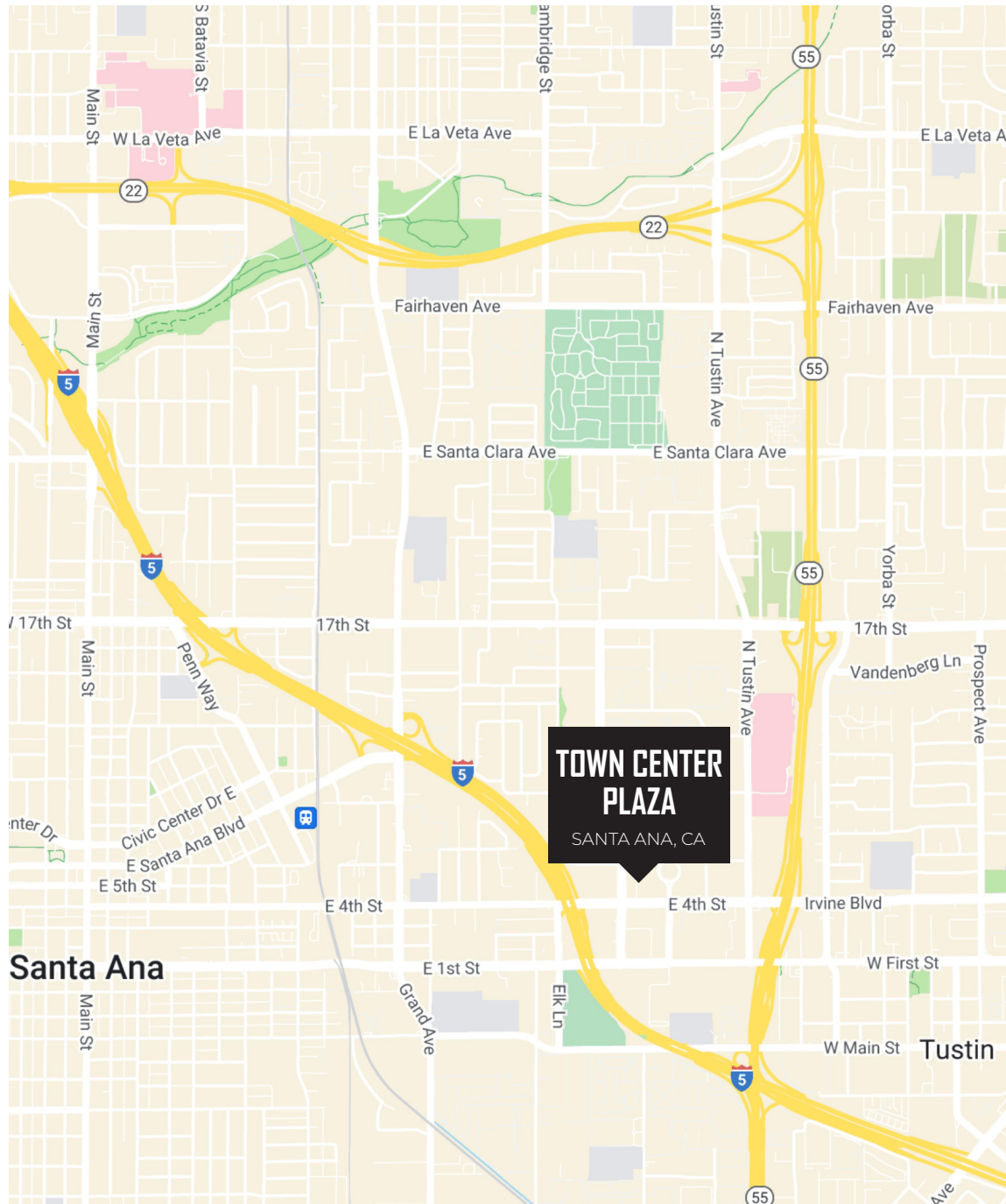
R. SCOTT COLTON

Senior Vice President
License #01923432
949.790.3127
scolton@leeirvine.com

TRENT MARTIN

Associate
License #02250629
949.790.3148
tmartin@leeirvine.com





PROPERTY OVERVIEW

Four (4) Professional Office Buildings

- 515 Cabrillo Park Drive
- 525 Cabrillo Park Drive
- 1901 E 4th Street
- 1971 E 4th Street

Centrally Located and within Minutes of the I-5, SR-55 and SR-22 Freeways

Wide Variety of Local Amenities Including Restaurants, Hotels, Financial Institutions, Shopping Centers and Much More

On-Site Property Management and Leasing

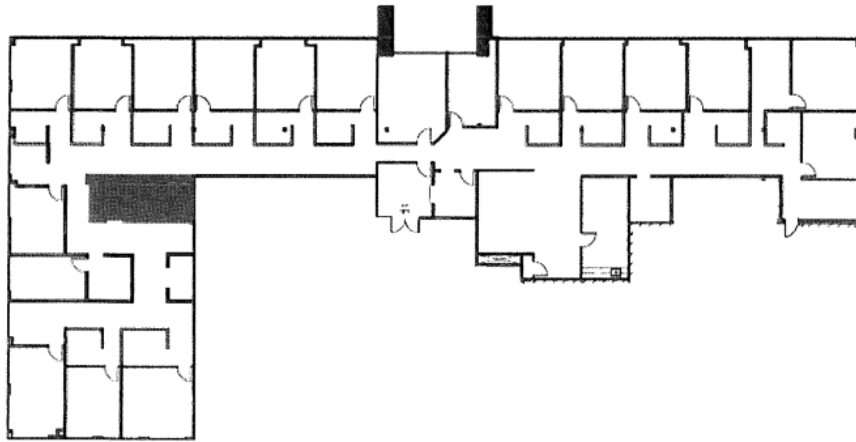
Professional Office Park Environment Highlighted by Towering Palms and Mature Landscaping

Minutes from County, State & Federal Courts and Offices

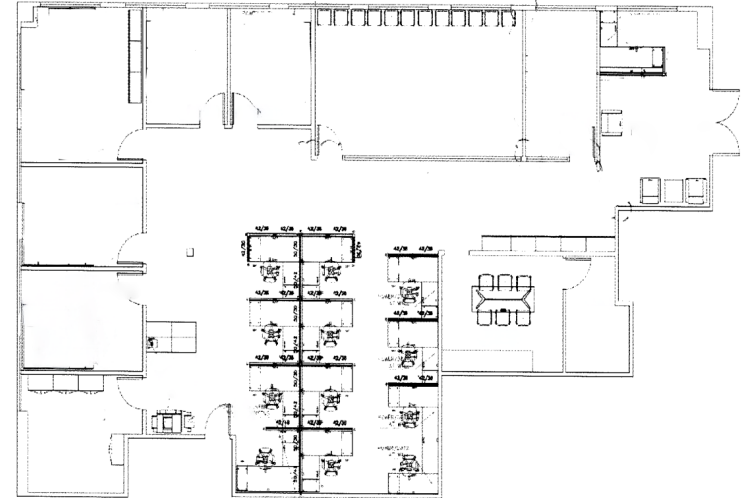
Abundant Surface Parking

SUITE	TOTAL SF	LEASE RATE	COMMENTS
515 CABRILLO DRIVE			
Suite 200	11,293 SF	\$1.00 FSG	18 offices, filing area, kitchen, server room, reception office
Suite 225	4,041 SF	\$1.00 FSG	7 offices, conference room, kitchen, server room, reception area, cubical area
Suite 301	1,220 SF	\$1.00 FSG	2 offices, open area, server room
525 CABRILLO DRIVE			
Suite 104	2,676 SF	\$1.00 FSG	7 offices, conference room, reception area, kitchen
Suite 105	868 SF	\$1.00 FSG	2 offices, 1 conference room
Suite 125	4,015 SF	\$1.00 FSG	5 offices, kitchen, reception area, copy room, 2 room large open area
Suite 280	4,759 SF	\$1.00 FSG	11 offices, kitchen, server room, large open area
Suite 300	13,085 SF	\$1.00 FSG	38 offices, kitchen, conference room, mail room, 2 restrooms, waiting area, reception area
Suite 350	3,105 SF	\$1.00 FSG	10 offices, conference room, kitchen, reception
1901 EAST 4TH STREET			
Suite 200	4,847 SF	\$1.00 FSG	8 offices with bathroom & shower, 5 offices, server room, reception area, file room
Suite 310	3,296 SF	\$1.00 FSG	6 offices, kitchen, open area
1971 EAST 4TH STREET			
Suite 160	1,617 SF	\$1.00 FSG	5 offices, reception area, kitchen area with no sink
Suite 180	4,213 SF	\$1.00 FSG	5 offices, conference room, kitchen, large open area
Suite 200	5,939 SF	\$1.00 FSG	6 offices, conference room, kitchen, large open area
Suite 210	3,730 SF	\$1.00 FSG	5 offices, reception area, 2 open areas, 1 bathroom, kitchen
Suite 250	1,865 SF	\$1.00 FSG	5 offices, reception area, kitchen area with no sink
Suite 290	1,560 SF	\$1.00 FSG	4 offices, small open space, *Available June first*
Suite 300	512 SF	\$1.00 FSG	Open space
Suite 340	512 SF	\$1.00 FSG	1 office with open area

515 CABRILLO PARK DRIVE

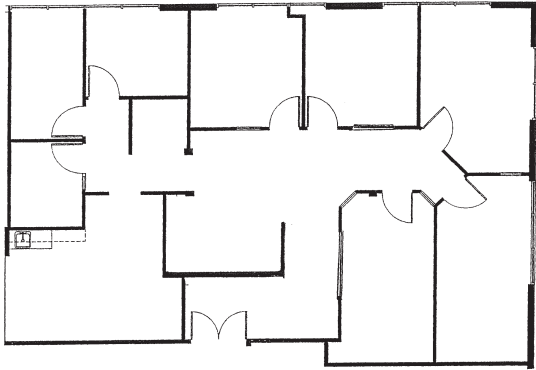


SUITE 200
±11,293 SF

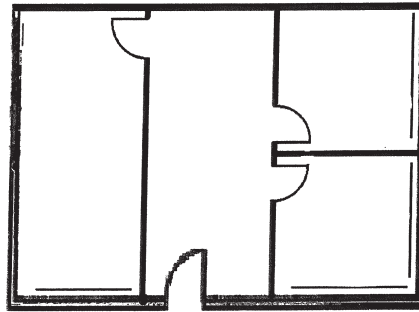


SUITE 225
±4,041 SF

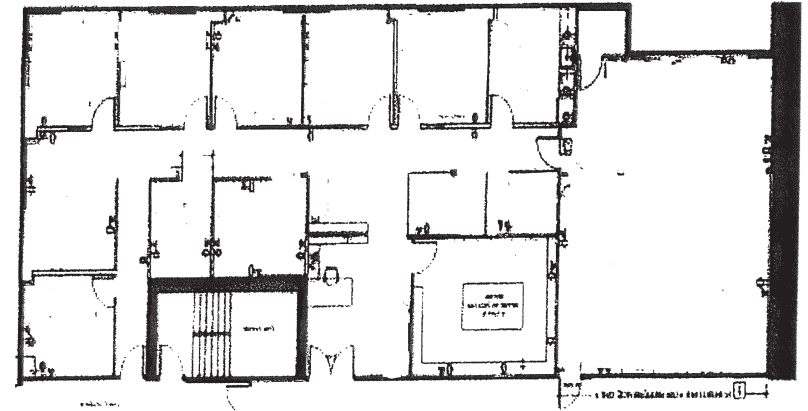
525 CABRILLO PARK DRIVE



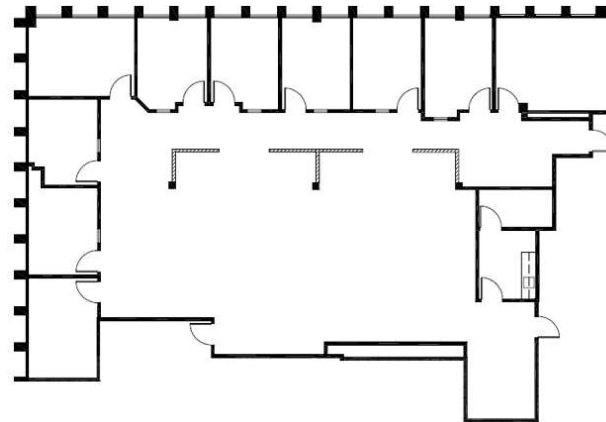
SUITE 104
±2,676 SF



SUITE 105
±868 SF

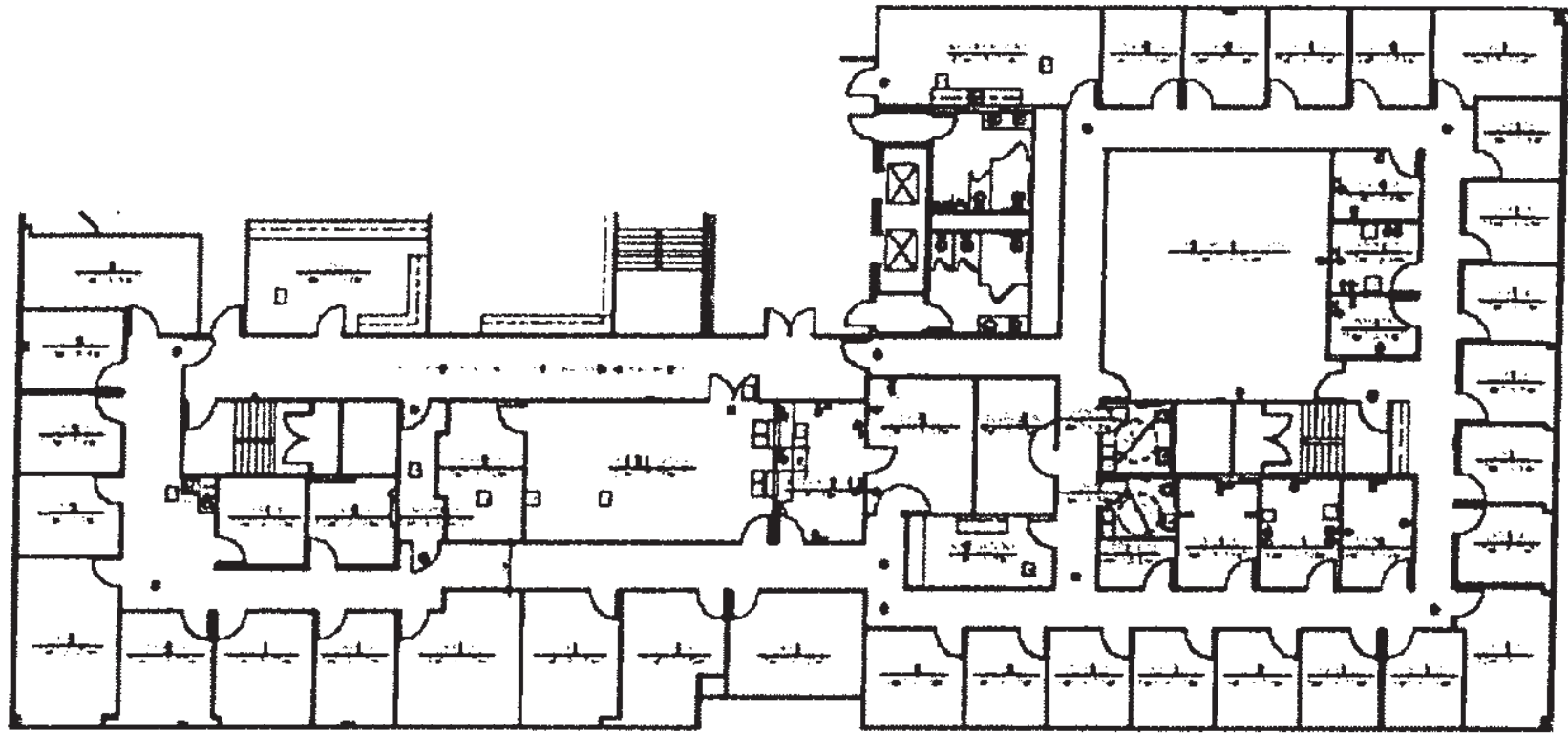


SUITE 125
±4,015 SF



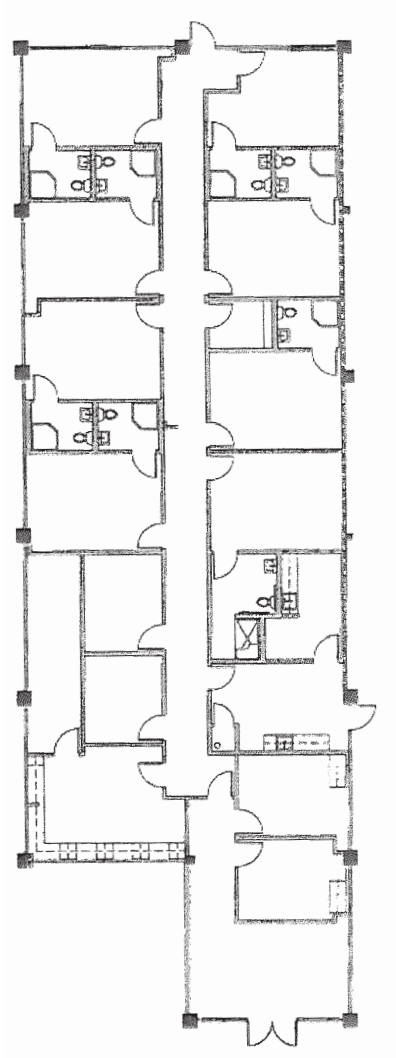
SUITE 280
±4,759 SF

525 CABRILLO PARK DRIVE

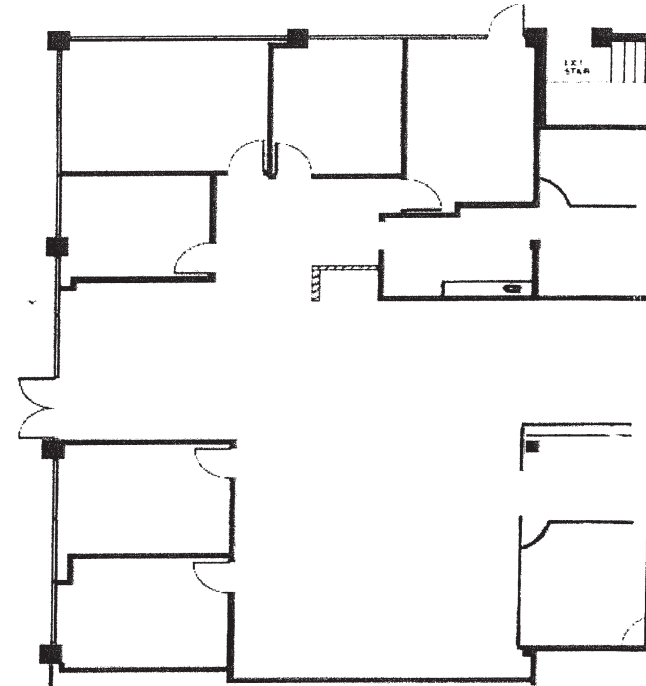


SUITE 300
±13,085 SF

1901 E 4TH STREET

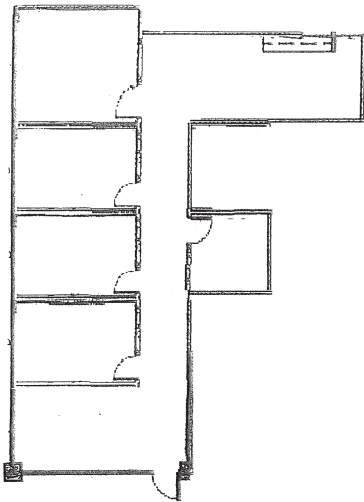


SUITE 200
±4,847 SF

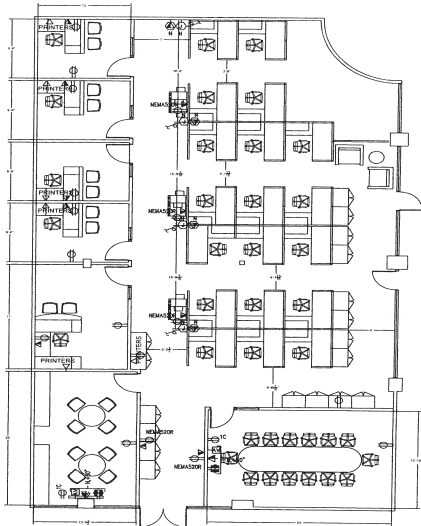


SUITE 310
±3,296 SF

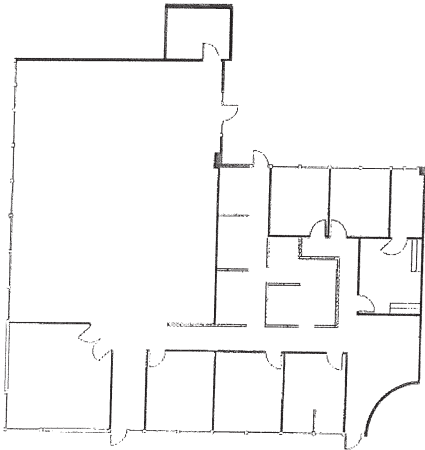
1971 E 4TH STREET



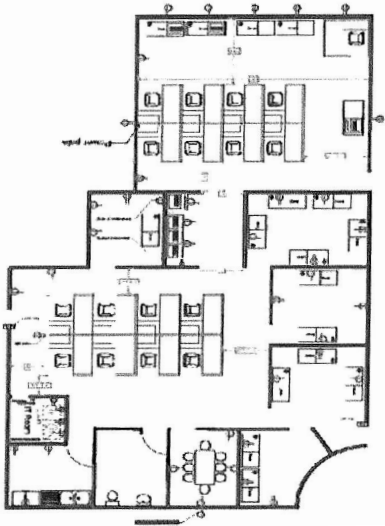
SUITE 160
±1,617 SF



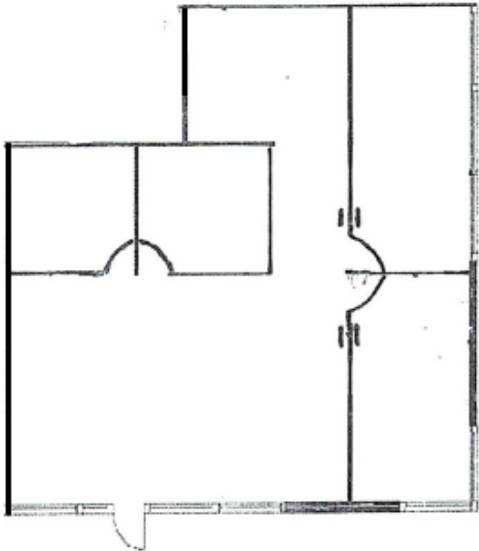
SUITE 180
±4,213 SF



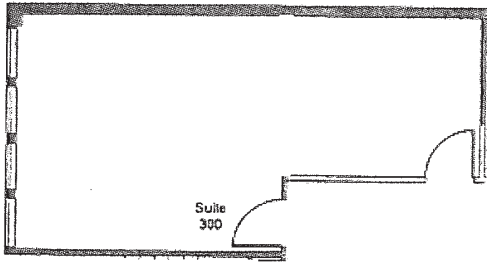
SUITE 200
±5,939 SF



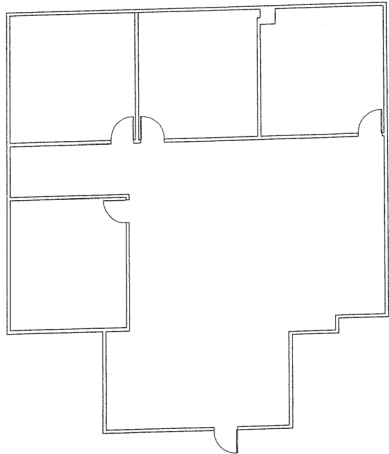
SUITE 210
±3,730 SF



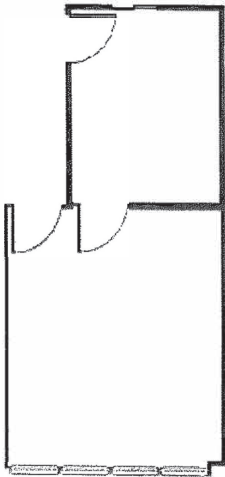
SUITE 250
±1,865 SF



SUITE 300
±512 SF



SUITE 290
±1,560 SF



SUITE 340
±512 SF