

# FOR LEASE

14530 NE 20th St.  
Choctaw, OK 73020



**Johnson**  
Commercial Group

JohnsonCommercialGroup.com



## Offering Summary

**Building Size:** 4,784 SF

**Available SF:** 4,784 SF

**Lease Rate:** \$15 SF

**Lease Type:** MG

**Lot Size:** 1.05 Acres

**Zoning:** Commercial

**Year Built:** 2011

**Class:** B

## Property Overview

For lease – former sports bar at 14530 NE 20th St, Choctaw, OK. This 4,784 SF restaurant or sports grill space sits on 1.05 acres, just half a mile south of NE 23rd St. Features include a bar area, two multi-stall restrooms, 45 parking spots, an open outdoor deck, and a fireplace.

**\*\*Owner/Broker\*\***

**Chris Johnson**  
chris@jcgok.com  
405.435.3572



**BRICK & BEAM**  
REALTY



# FOR LEASE

14530 NE 20th St.  
Choctaw, OK 73020



**Johnson**  
Commercial Group

[JohnsonCommercialGroup.com](http://JohnsonCommercialGroup.com)



**Chris Johnson**  
[chris@jcgok.com](mailto:chris@jcgok.com)  
405.435.3572



**BRICK & BEAM**  
REALTY



# FOR LEASE

14530 NE 20th St.  
Choctaw, OK 73020



**Johnson**  
Commercial Group

[JohnsonCommercialGroup.com](http://JohnsonCommercialGroup.com)



**Chris Johnson**  
[chris@jcgok.com](mailto:chris@jcgok.com)  
405.435.3572



**BRICK & BEAM**  
REALTY



# FOR LEASE

14530 NE 20th St.  
Choctaw, OK 73020



**Johnson**  
Commercial Group

JohnsonCommercialGroup.com



**Chris Johnson**  
chris@jcgok.com  
405.435.3572



**BRICK & BEAM**  
REALTY



# FOR LEASE

14530 NE 20th St.  
Choctaw, OK 73020



**Johnson**  
Commercial Group

[JohnsonCommercialGroup.com](http://JohnsonCommercialGroup.com)



**Chris Johnson**  
[chris@jcgok.com](mailto:chris@jcgok.com)  
405.435.3572



**BRICK & BEAM**  
REALTY



# FOR LEASE

14530 NE 20th St.  
Choctaw, OK 73020



**Johnson**  
Commercial Group

JohnsonCommercialGroup.com



**Chris Johnson**  
chris@jcgok.com  
405.435.3572



**BRICK & BEAM**  
REALTY



# FOR LEASE

14530 NE 20th St.  
Choctaw, OK 73020



**Johnson**  
Commercial Group

JohnsonCommercialGroup.com



**Chris Johnson**  
chris@jcgok.com  
405.435.3572



**BRICK & BEAM**  
REALTY

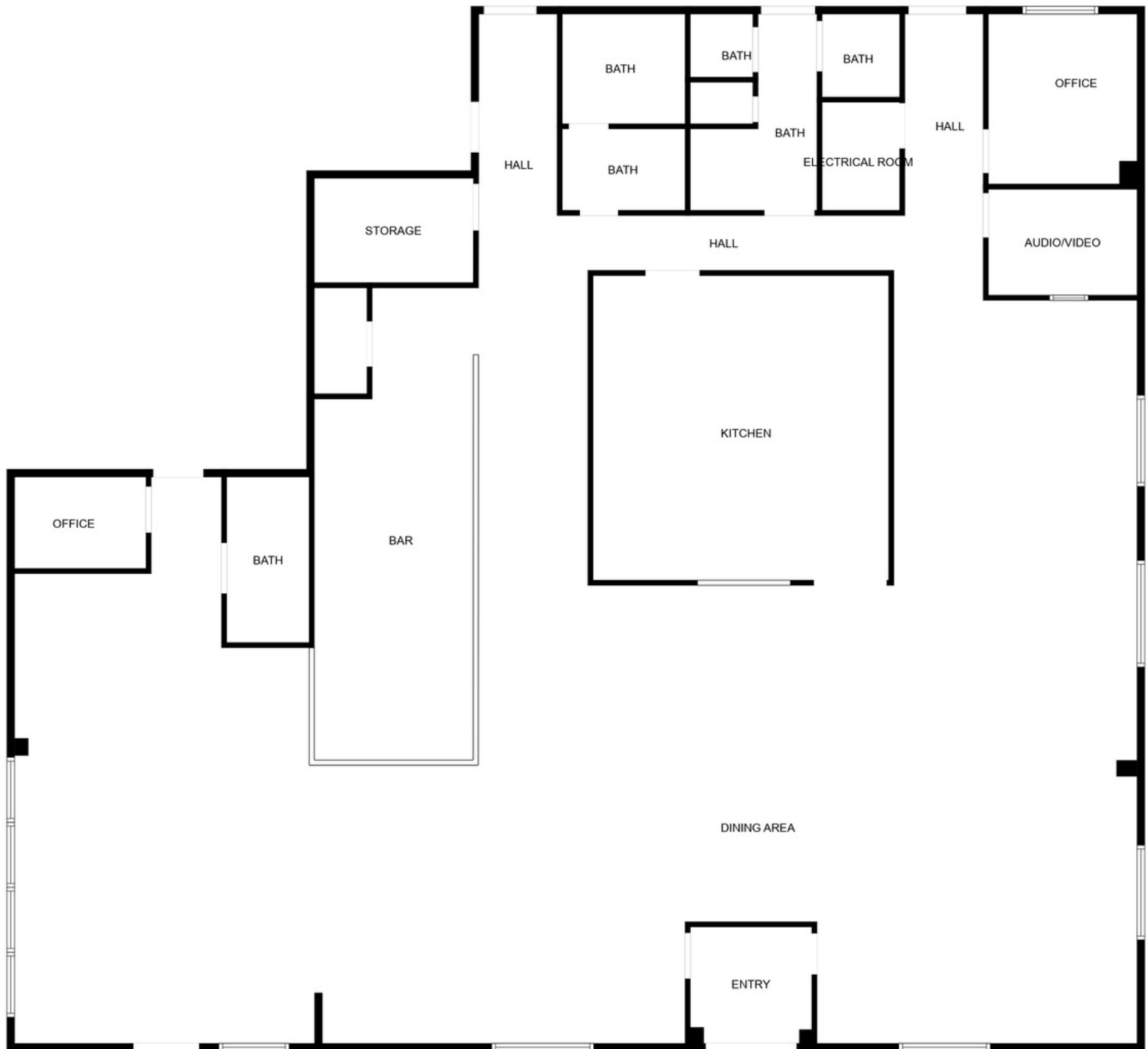
# FOR LEASE

14530 NE 20th St.  
Choctaw, OK 73020



**Johnson**  
Commercial Group

JohnsonCommercialGroup.com



**Chris Johnson**  
chris@jcgok.com  
405.435.3572



**BRICK & BEAM**  
REALTY



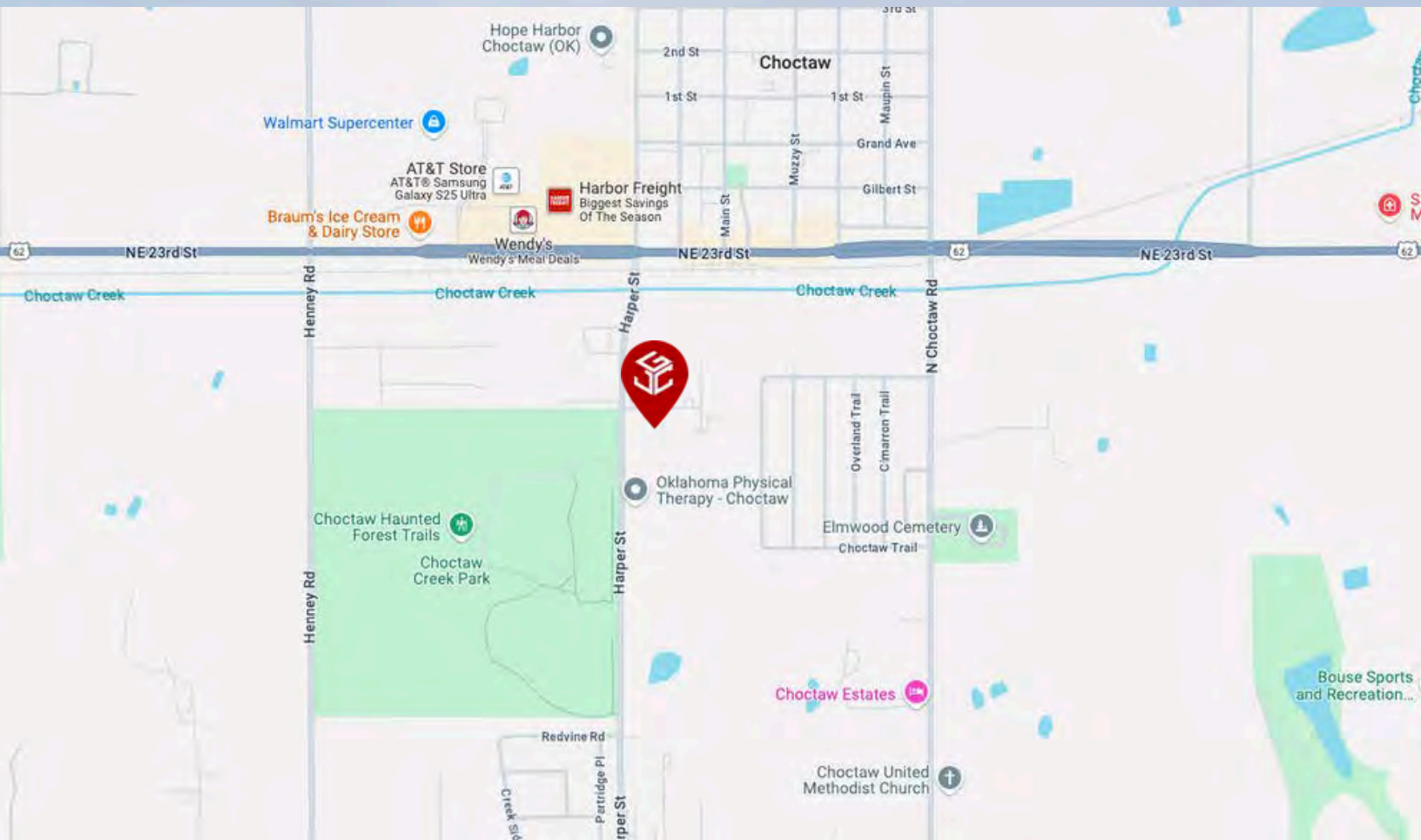
# FOR LEASE

14530 NE 20th St.  
Choctaw, OK 73020



**Johnson**  
Commercial Group

JohnsonCommercialGroup.com



**Chris Johnson**  
chris@jcgok.com  
405.435.3572



**BRICK & BEAM**  
REALTY



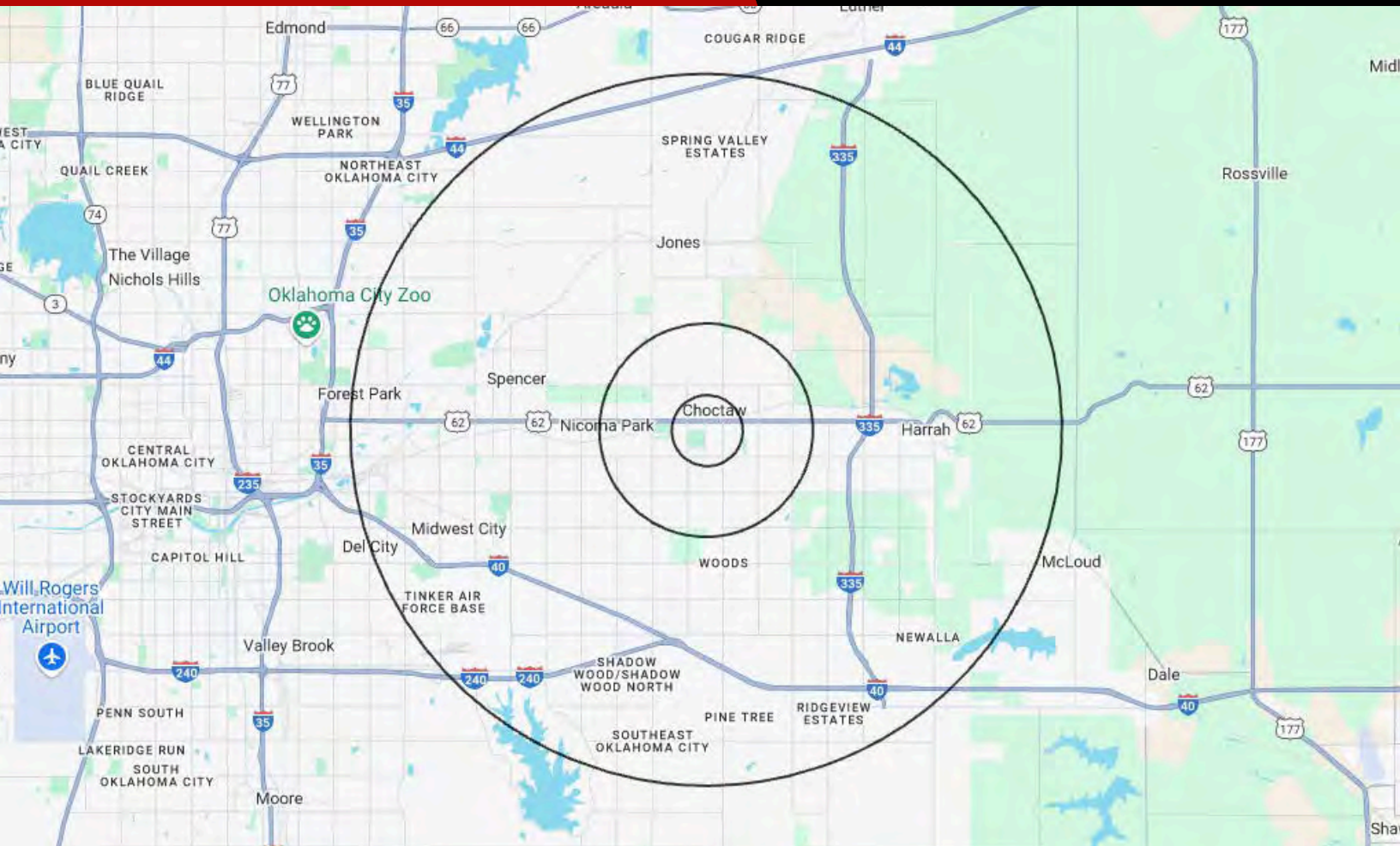
# FOR LEASE

**14530 NE 20th St.  
Choctaw, OK 73020**



**Johnson**  
Commercial Group

[JohnsonCommercialGroup.com](http://JohnsonCommercialGroup.com)



## Demographics

### 1 MILE

### 3 MILE

### 10 MILE

Population	2,575	12,353	137,921
Median Age	40	43	38
Employment	1,213	3,022	37,000
Households	1,035	4,702	5,528
Ave. Household Income	\$86,229	\$103,377	\$79,337
Median Home Value	\$177,102	\$222,810	\$177,500

## Traffic Count

**Average Daily Volume**  
Information Provide By CoStar

**1,484 Vehicles**

**Chris Johnson**  
[chris@jegok.com](mailto:chris@jegok.com)  
**405.435.3572**



**BRICK & BEAM**  
REALTY



# FOR LEASE

14530 NE 20th St.  
Choctaw, OK 73020



**Johnson**  
Commercial Group

JohnsonCommercialGroup.com



## Disclaimer

A real estate broker is not authorized to give legal or tax advice. No representation is made by Johnson Commercial Group, its agents or employees, as to the legal effect or tax consequences of the information contained herein or any transaction relating thereto. Although all information furnished regarding property sales or financing options are from sources deemed to be reliable, such information has not been verified and no express representation is made on, or is in any way implied as to the accuracy thereof and is subject to errors, omissions, change of price, or other conditions prior to sale or withdrawal without notice.

**Chris Johnson**  
chris@jcgok.com  
405.435.3572



**BRICK & BEAM**  
REALTY