



Avison Young - Raleigh-Durham | 5440 Wade Park Boulevard, Suite 200 | Raleigh, NC 27607

FOR LEASE

Arena Centre

1511 Sunday Drive, Raleigh, NC 27607

**AVISON
YOUNG**

Property highlights

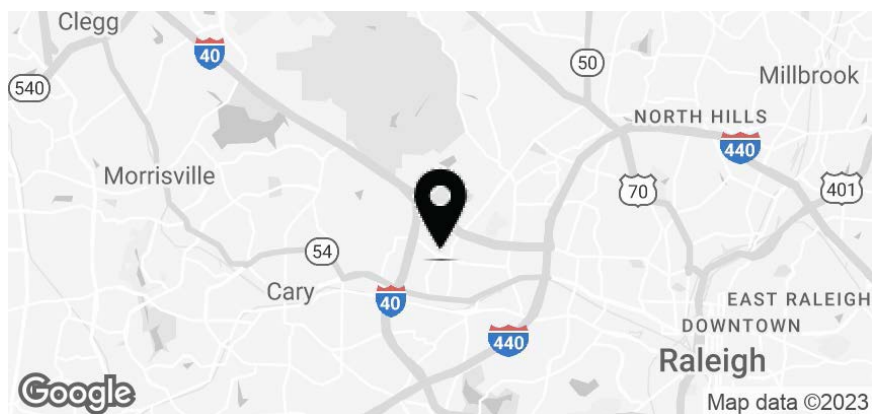
- Class A office building
- Building signage opportunity for larger square foot tenants
- Floor-to-ceiling glass provides abundant natural light
- Professional management and maintenance
- Well-appointed two-story atrium lobby
- Central location with easy access to I-40, I-440 Beltline, I-540, Research Triangle Park, RDU International Airport, and Cary

Offering Summary

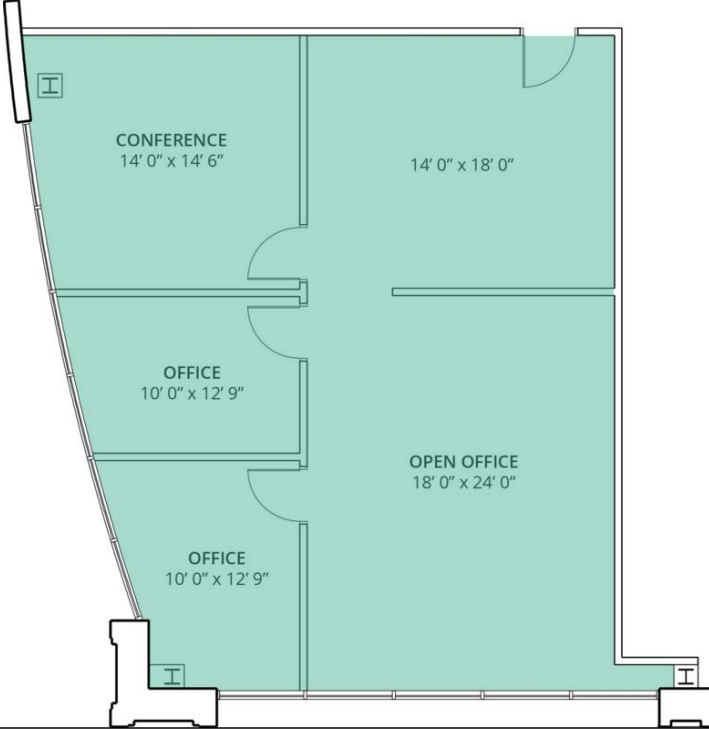
Lease Rate: \$29.50 SF/yr (Full Service)

Building Size: 62,000 SF

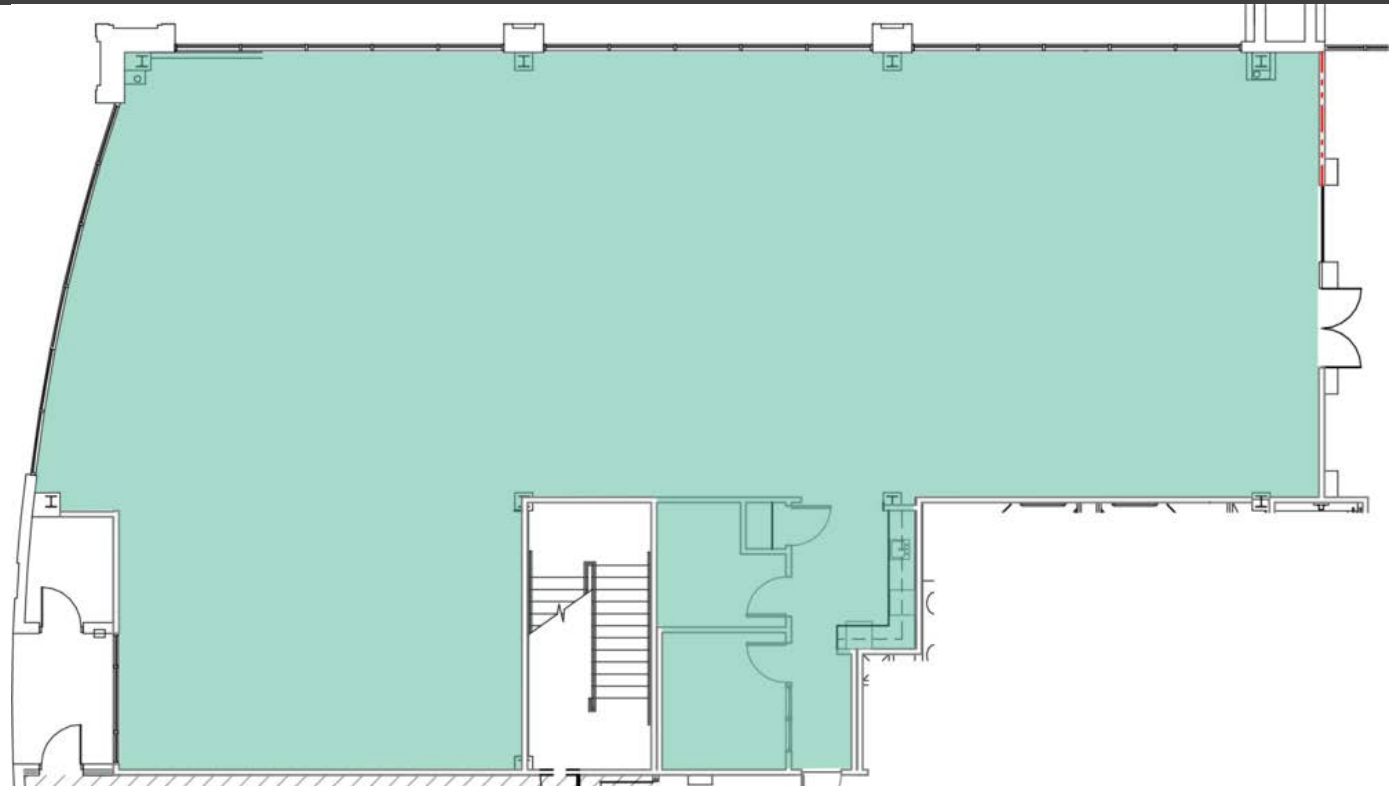
Available SF: 1,312 - 10,219 SF



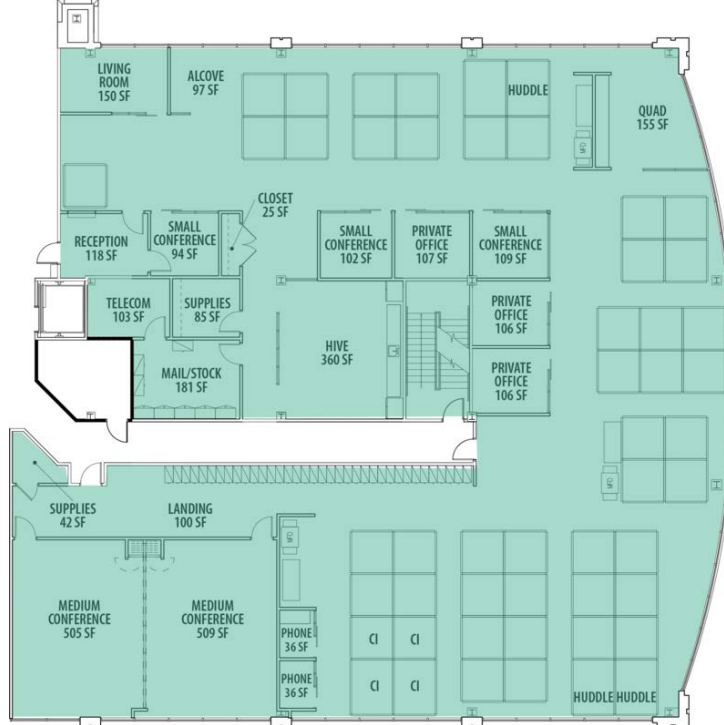
Floor Plans



Suite 116 - 1,312 sf

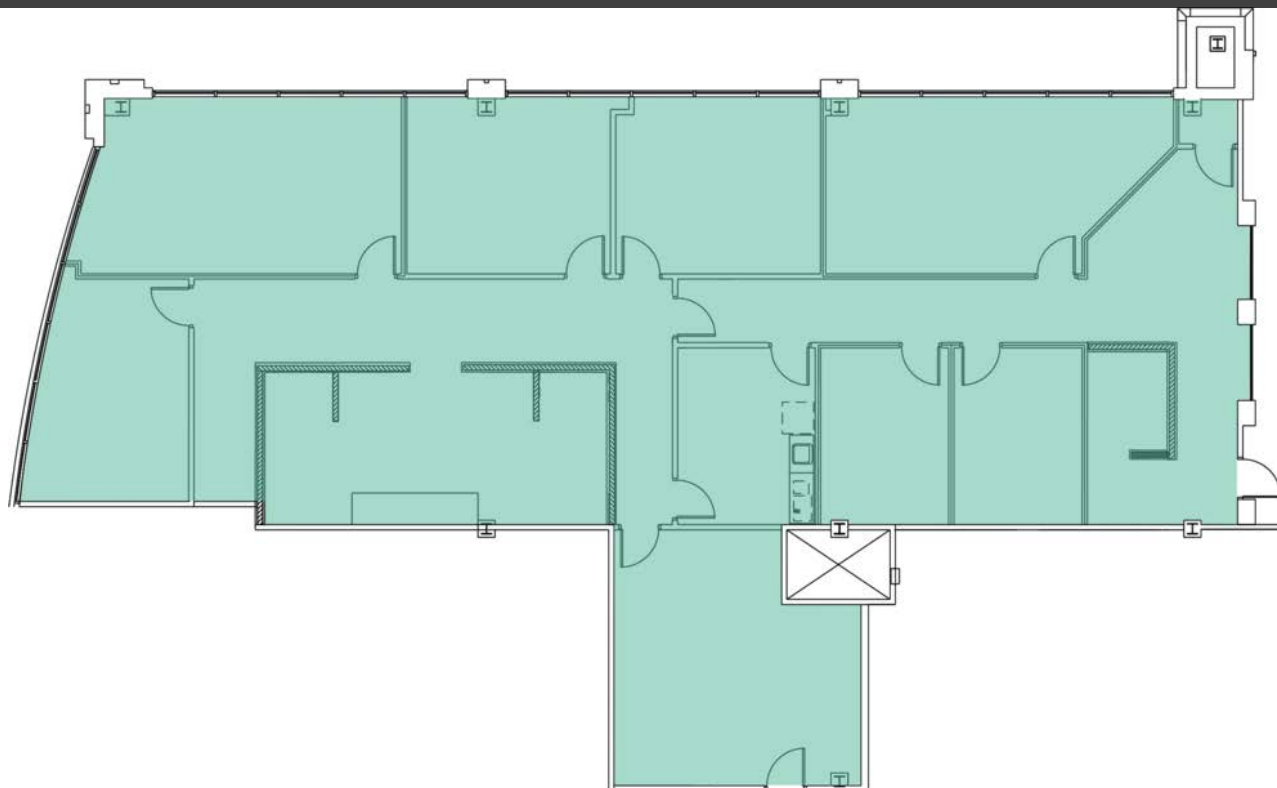


Suite 120 - 4,877 sf



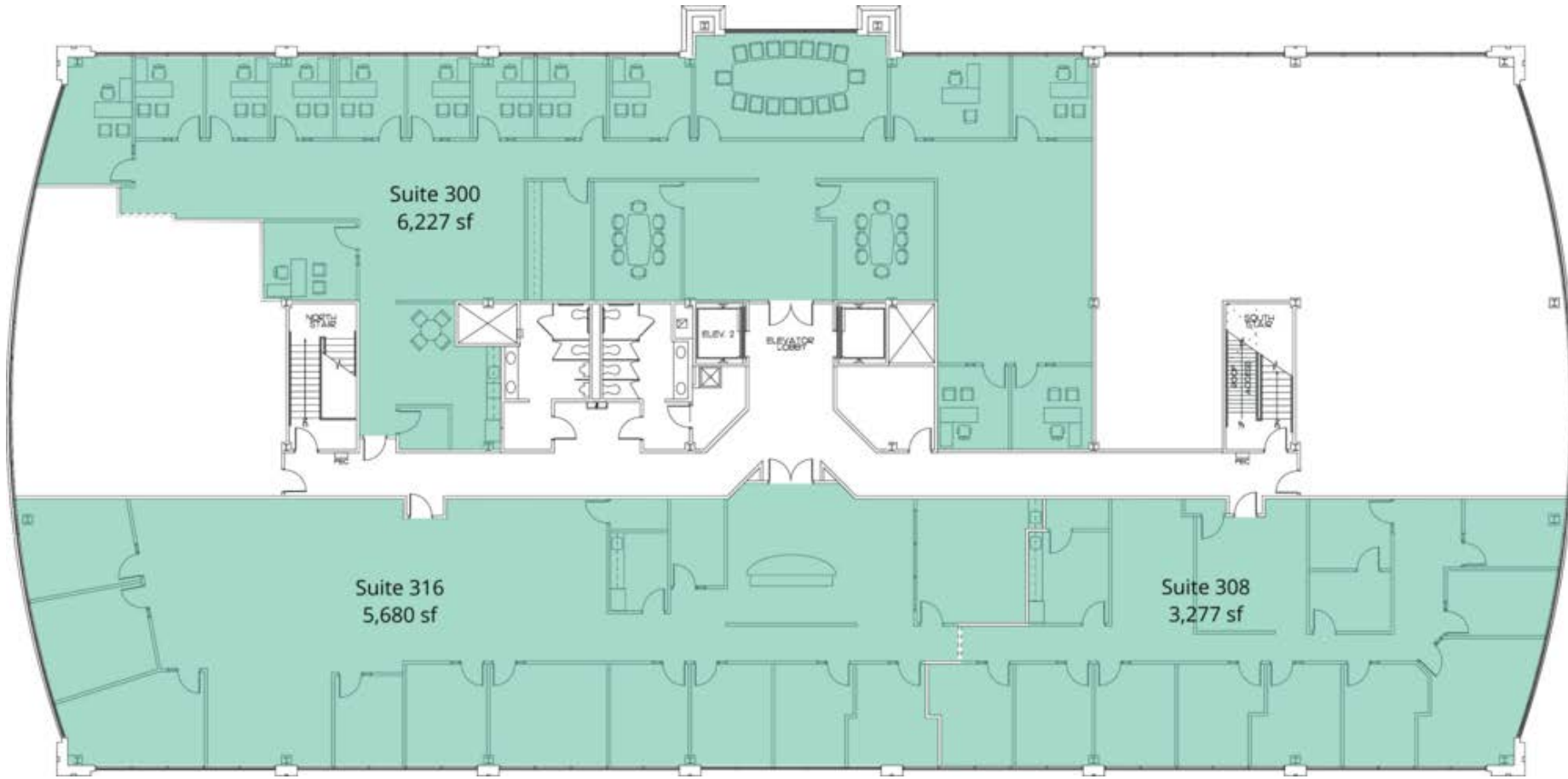
Suite 200 - 10,219 sf

Floor Plans

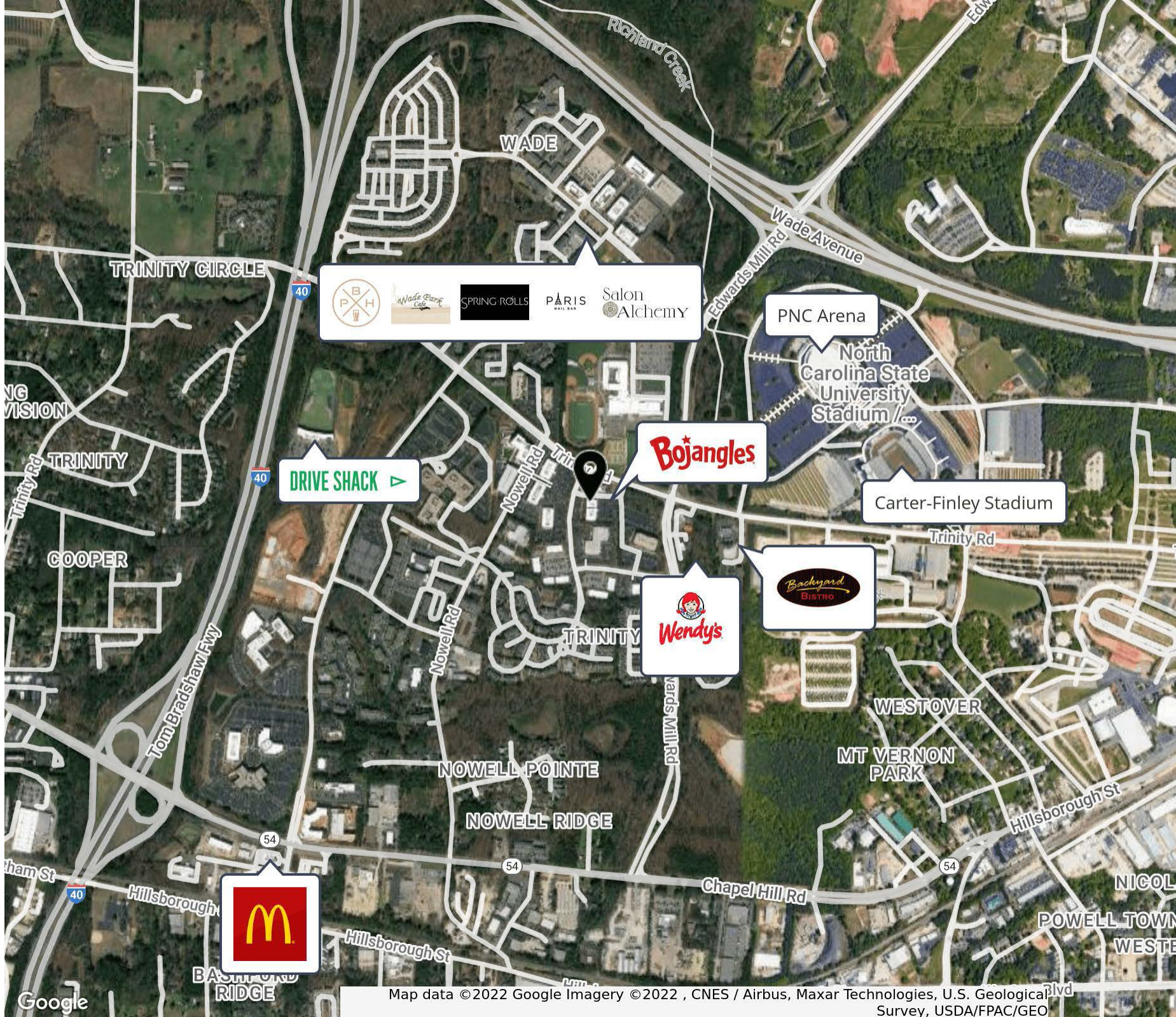


Suite 220 - 4,068 sf

Floor Plans



Retailer map



Demographics

173,732
Total population
within a five-mile
radius

10,973
Total businesses
within a five-mile
radius

142,170
Total employees
within a five-mile
radius

73,080
Households
within a five-mile
radius

\$103,519
Avg. hh income
within a five-mile
radius

\$437,355
Avg. house value
within a five-mile
radius

Let's talk.

Michael Vulpis
Senior Vice President, Office Leasing & Sales
D 919 420 1562
michael.vulpis@avisonyoung.com

Avison Young - Raleigh-Durham
5440 Wade Park Boulevard, Suite 200 | Raleigh, NC 27607

© 2024. Avison Young - Raleigh-Durham. Information contained herein was obtained from sources deemed reliable and, while thought to be correct, have not been verified. Avison Young - Raleigh-Durham does not guarantee the accuracy or completeness of the information presented, nor assumes any responsibility or liability for any errors or omissions therein.

**AVISON
YOUNG**