



250 DORCHESTER AVE

6,721 SF OFFICE SPACE AVAILABLE



Boston Realty Advisors

Boston Realty Advisors is pleased to present ground floor office space available at 250 Dorchester Ave with FREE PARKING! Unique opportunity to have street exposure as an office tenant. This building is located 5 minutes walk from the redline and all the amazing amenities Southie's Broadway has to offer! Space features a mix of office and open space and is perfect for architects, engineers, construction or anyone seeking office space with easy access in and out to meet clients. The term will be 1-5 years and the price is a fraction of what you would pay in Cambridge or anywhere in Downtown Boston.

AVAILABLE SPACE

1st Floor: 4,382 SF
Garden Leve: 2,276 SF

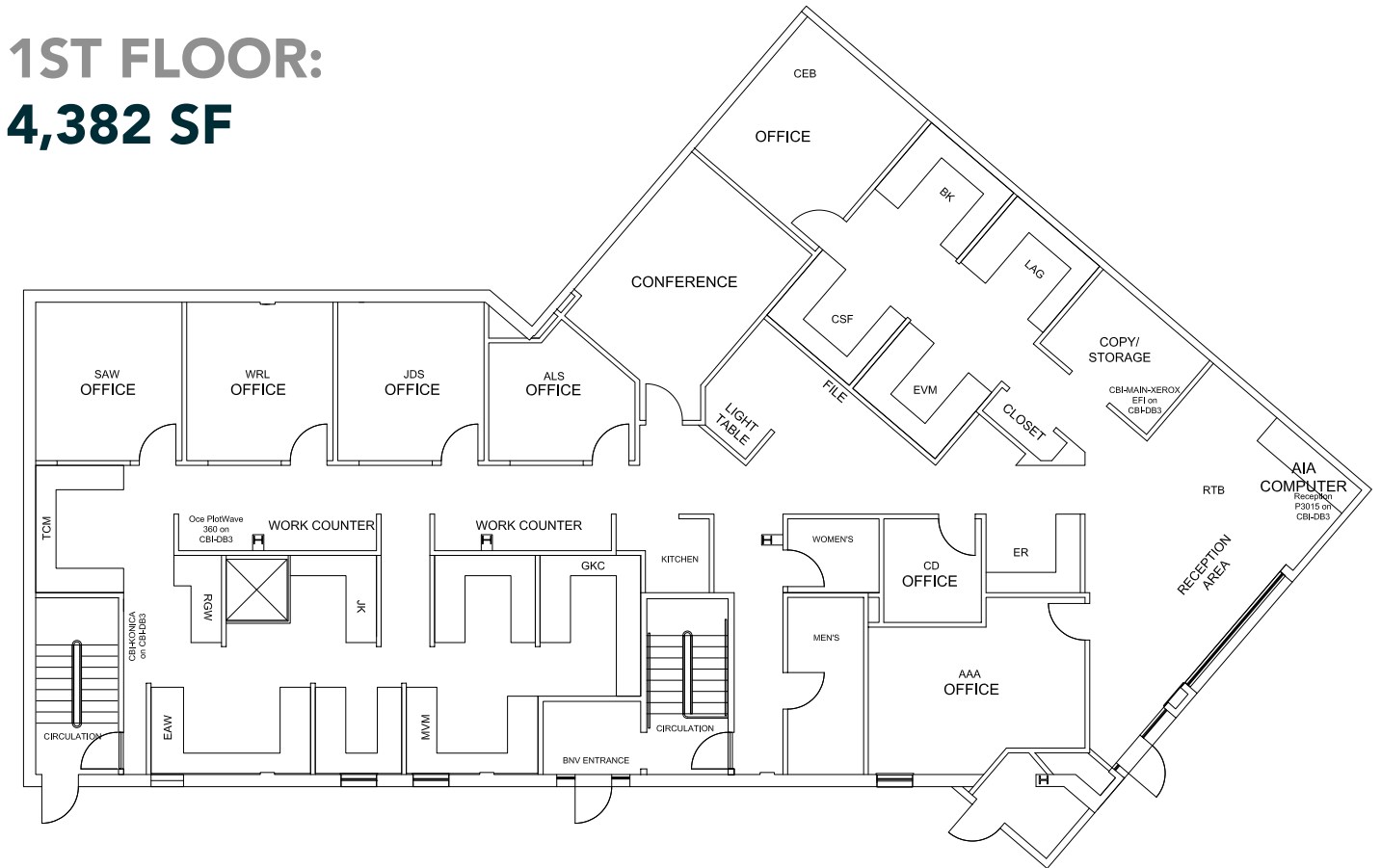
TERM

1-5 Years

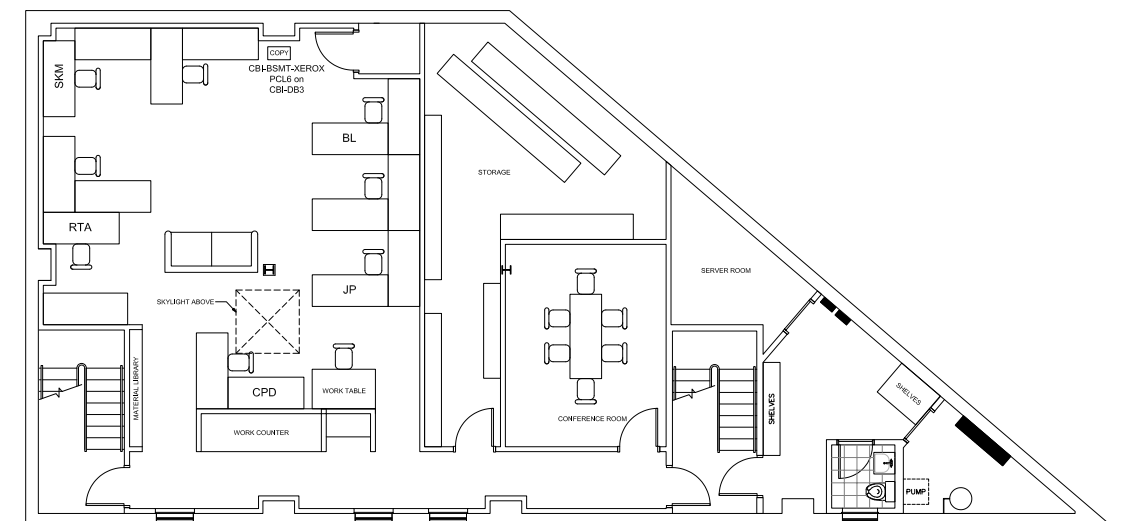
RENT

\$21/SF NNN

1ST FLOOR: 4,382 SF



GARDEN LEVEL: 2,276 SF



Space Highlights

- ✔ Floors Are Leased Separately
- ✔ 12-15 Parking Spaces
- ✔ Signage Opportunity



CREATING A R&D AND LIFE SCIENCES CORRIDOR

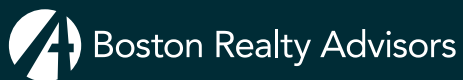
250 Dorchester Ave

- | | |
|------------------------------|--------------------------------------|
| 1: 99 A Street | 8: 391 Congress Street |
| 2: 105 W First Street | 9: 401 Congress Street |
| 3: Summer Street | 10: 40 W Third Street |
| 4: 80-110 W Broadway | 11: 654 Summer Street |
| 5: 244-284 A Street | 12: 69 A Street |
| 6: 15 Necco Street | 13: 475-511 Dorchester Avenue |
| 7: 6 Necco Street | 14: 323-345 Dorchester Avenue |





BONNY L. DOORAKIAN
617.763.2919
bdoorakian@bradvisors.com



136 Newbury Street | Boston, MA 02116 | 617.375.7900 | BRAdvisors.com

© Copyright Boston Realty Advisors. All rights reserved. The information contained here has been obtained through sources deemed reliable but cannot be guaranteed as to its accuracy. Any information of special interest should be obtained through independent verification.