



CROSSPOINTE COMMERCE CENTER

14001 NW 112 AVENUE #10, HIALEAH GARDENS, FL 33018
+/- 9,368 Available For Lease



VIDEO

LOCATION DESCRIPTION

- ▶ Immediate Turnpike access
- ▶ Future Florida Turnpike freeway overpass at NW 138th Street.
- ▶ Multiple points of ingress/egress with two access points along NW 140th Street and one along NW 112th Avenue.
- ▶ New Florida Turnpike interchange at NW 170th Street is underway with a planned 2023 completion. The interchange will immensely enhance access to the surrounding neighborhood, including the Subject.

WAREHOUSE FEATURES

- +/- 9,368 Sq. Ft. Total Size +/- 936 Sq. Ft.
- Office +/- 8,432 Sq. Ft. Warehouse Two
- (2) Dock High Loading Doors
- 32' Clear Ceiling Height
- 3 Phase Electrical 200 Amp / 480 Volt
- 120' truck courts
- 54' column widths ESFR sprinklers
- ESFR sprinklers

MORE INFORMATION

Alexander Bernaldo, SIOR
President
786.337.7877
Alex@AmericasCRE.com

Michael Silva, SIOR
Vice President
786.337.7881
mike@americascre.com

Bradford Ross, SIOR
Commercial Advisor
786.337.7863
brad@americascre.com

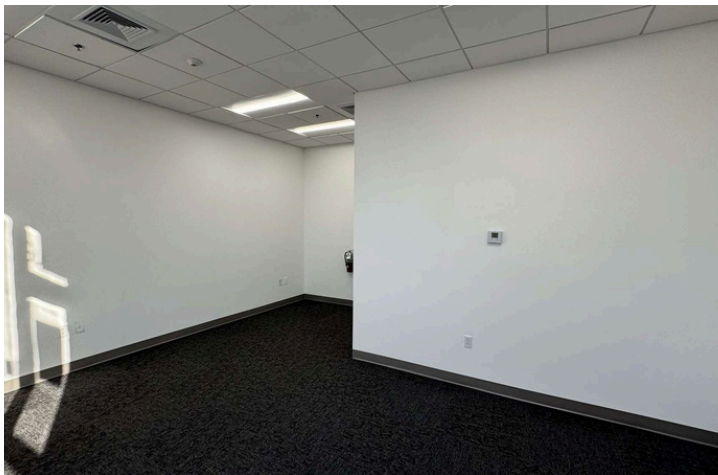
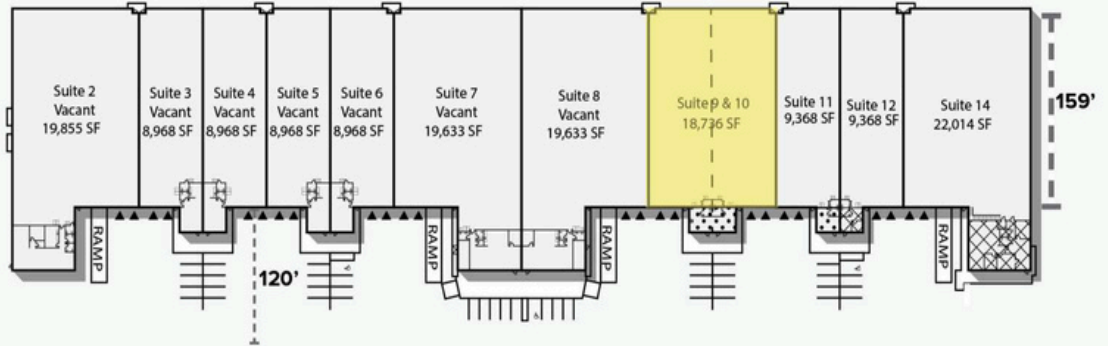


CROSSPOINTE COMMERCE CENTER

14001 NW 112 AVENUE #9&10 - 18,736 SF

+/- 18,736 Available For Lease

PARK LAYOUT



MORE INFORMATION

Alexander Bernaldo, SIOR
President
786.337.7877
Alex@AmericasCRE.com

Michael Silva, SIOR
Vice President
786.337.7881
mike@americascre.com

Bradford Ross, SIOR
Commercial Advisor
786.337.7863
brad@americascre.com

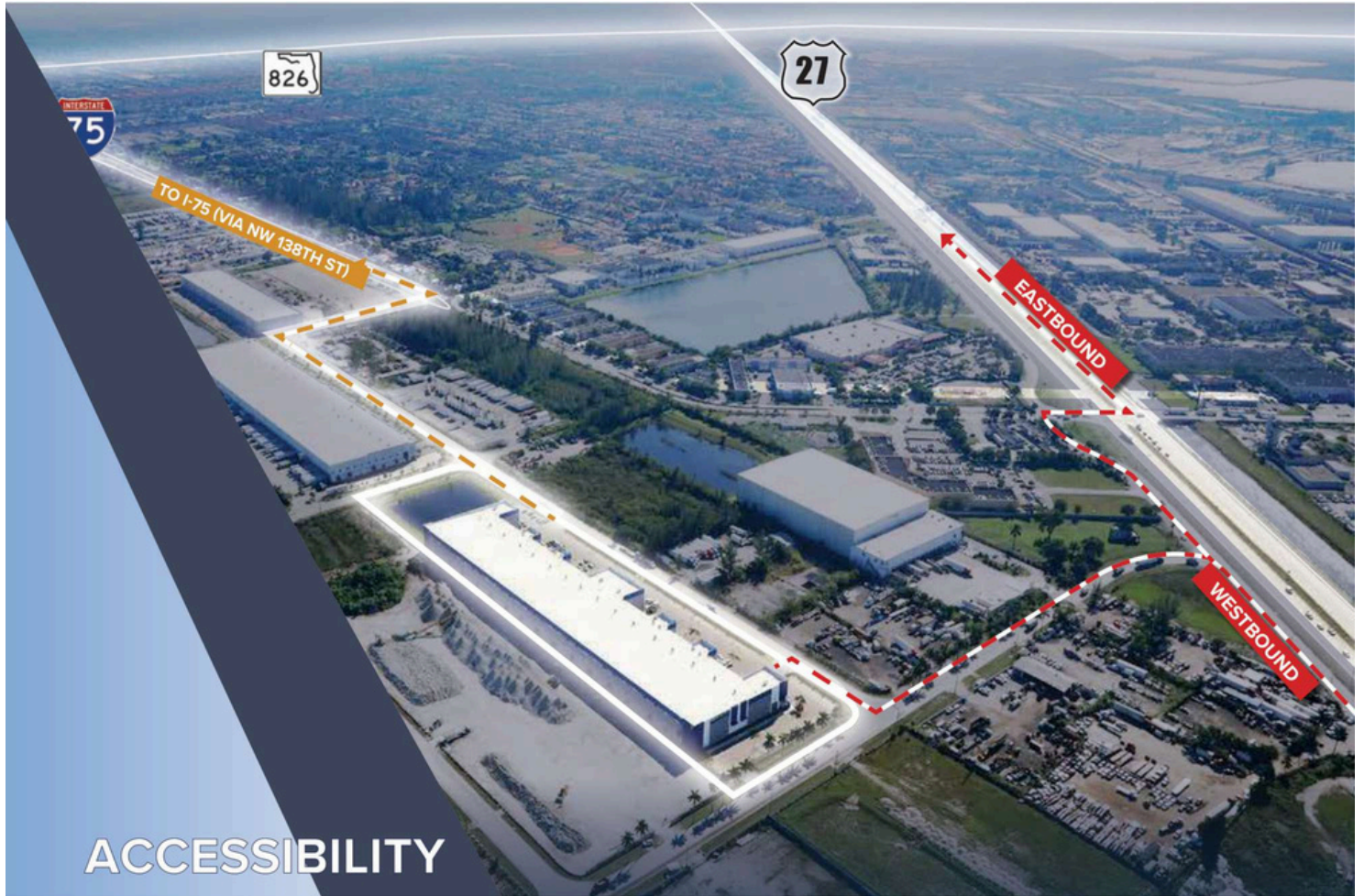




CROSSPOINTE COMMERCE CENTER

14001 NW 112 AVENUE #9&10 - 18,736 SF

+/- 18,736 Available For Lease



0.3
MILES



0.5
MILES



2.4
MILES



3.5
MILES



12.7
MILES



19.6
MILES

MORE INFORMATION

Alexander Bernaldo, SIOR
President
786.337.7877
Alex@AmericasCRE.com

Michael Silva, SIOR
Vice President
786.337.7881
mike@americascre.com

Bradford Ross, SIOR
Commercial Advisor
786.337.7863
brad@americascre.com

