

340 E. EDGEWOOD BLVD.
LANSING, MICHIGAN

INDUSTRIAL FOR LEASE
20,000 - 68,467 Square Feet Available



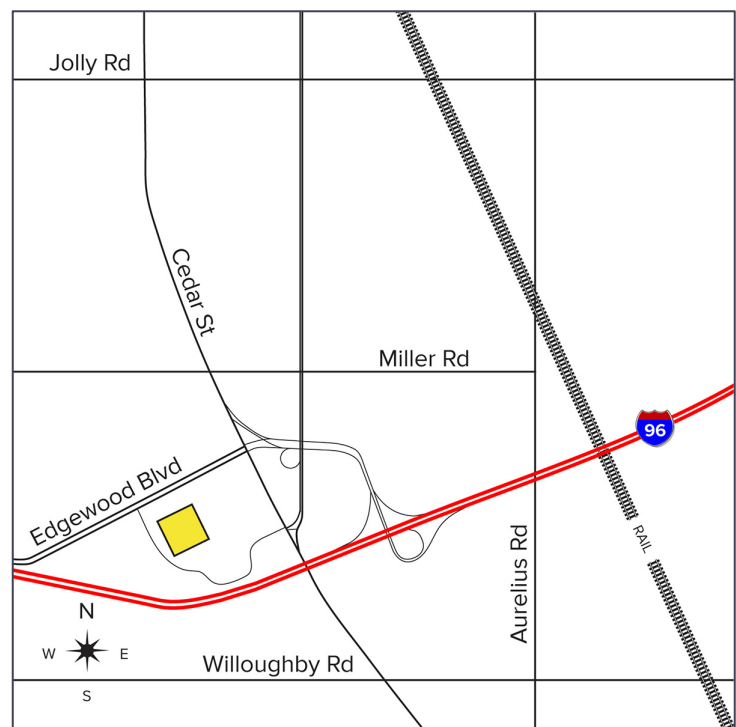
**SIGNATURE
ASSOCIATES**
KNOW SIGNATURE | KNOW RESULTS

INDUSTRIAL OR COMMERCIAL/RETAIL



PROPERTY FEATURES

- 20,000 - 68,467 square feet available
- 2,000 square feet office
- 27' clear height
- (4) grade level doors, (8) truckwells
- Zoned Commercial
- Former Sam's Club being redeveloped for multiple tenants
- Can accommodate industrial or commercial/retail
- Can add additional truckwells and overhead doors
- 100% air-conditioned
- 3000 amps, 480 volts power
- 700 car parking
- Wide columns at 60' x 40'
- Quick access to I-96 via exit 104 at Cedar Street



For more information, please contact:

JEFF LEMANSKI
(248) 359 0641
jlemanski@signatureassociates.com

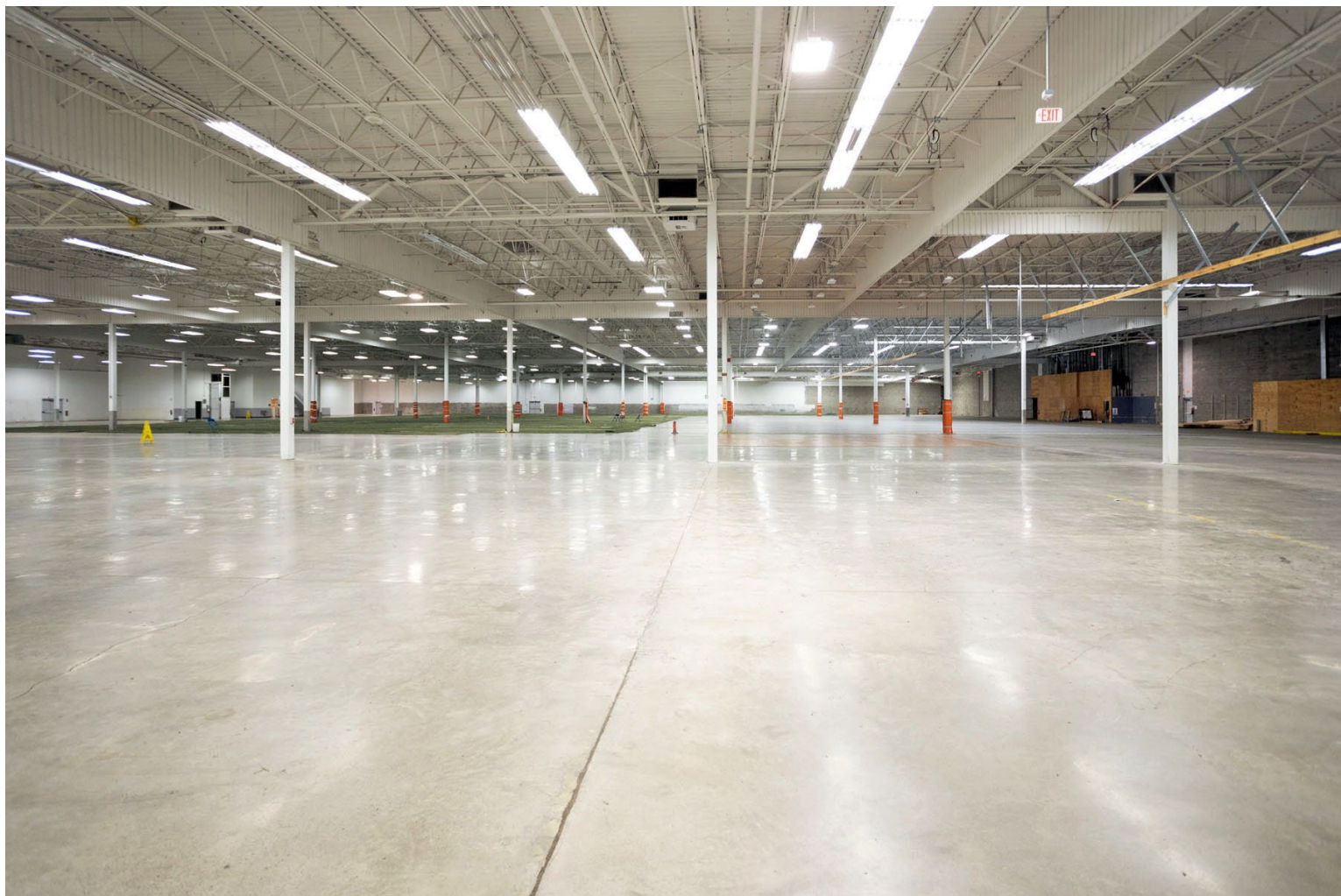
SIGNATURE ASSOCIATES
One Towne Square, Suite 1200
Southfield, MI 48076
www.signatureassociates.com

340 E. Edgewood Blvd. – Lansing, Michigan

Industrial For Lease

20,000 - 68,467
Square Feet
AVAILABLE

Additional Photos



For more information, please contact:

JEFF LEMANSKI

(248) 359 0641

jlemanski@signatureassociates.com

SIGNATURE ASSOCIATES
One Towne Square, Suite 1200
Southfield, MI 48076
www.signatureassociates.com

Information is subject to verification and no liability for errors or omissions is assumed. Price is subject to change and listing withdrawal.

340 E. Edgewood Blvd. – Lansing, Michigan

Industrial For Lease

20,000 - 68,467
Square Feet
AVAILABLE

Floor Plan - Warehouse



For more information, please contact:

JEFF LEMANSKI

(248) 359 0641

jlemanski@signatureassociates.com

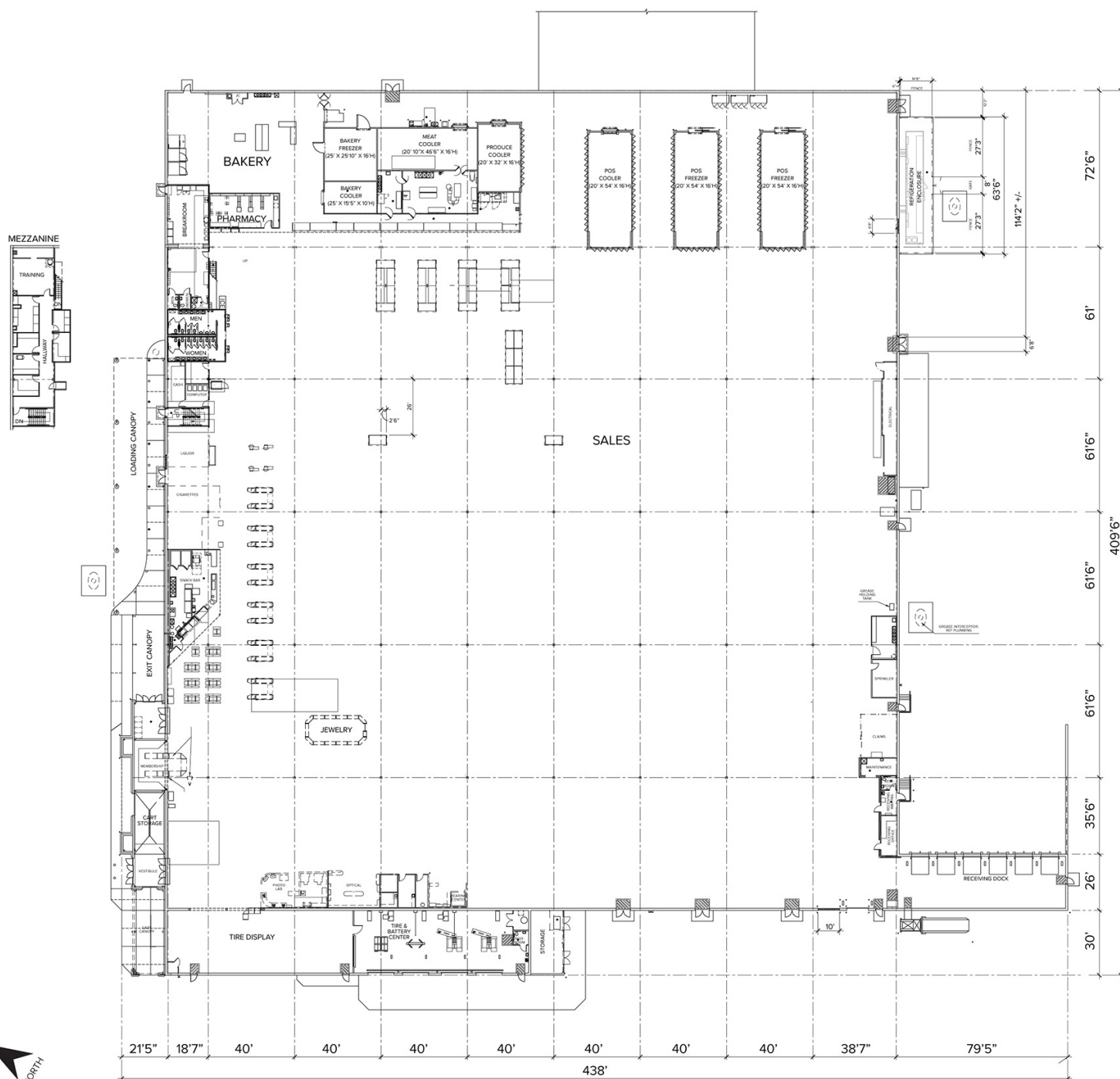
SIGNATURE ASSOCIATES
One Towne Square, Suite 1200
Southfield, MI 48076
www.signatureassociates.com

340 E. Edgewood Blvd. – Lansing, Michigan

Industrial For Lease

20,000 - 68,467
Square Feet
AVAILABLE

Floor Plan



For more information, please contact:

JEFF LEMANSKI

(248) 359 0641

jlemanski@signatureassociates.com

SIGNATURE ASSOCIATES

One Towne Square, Suite 1200

Southfield, MI 48076

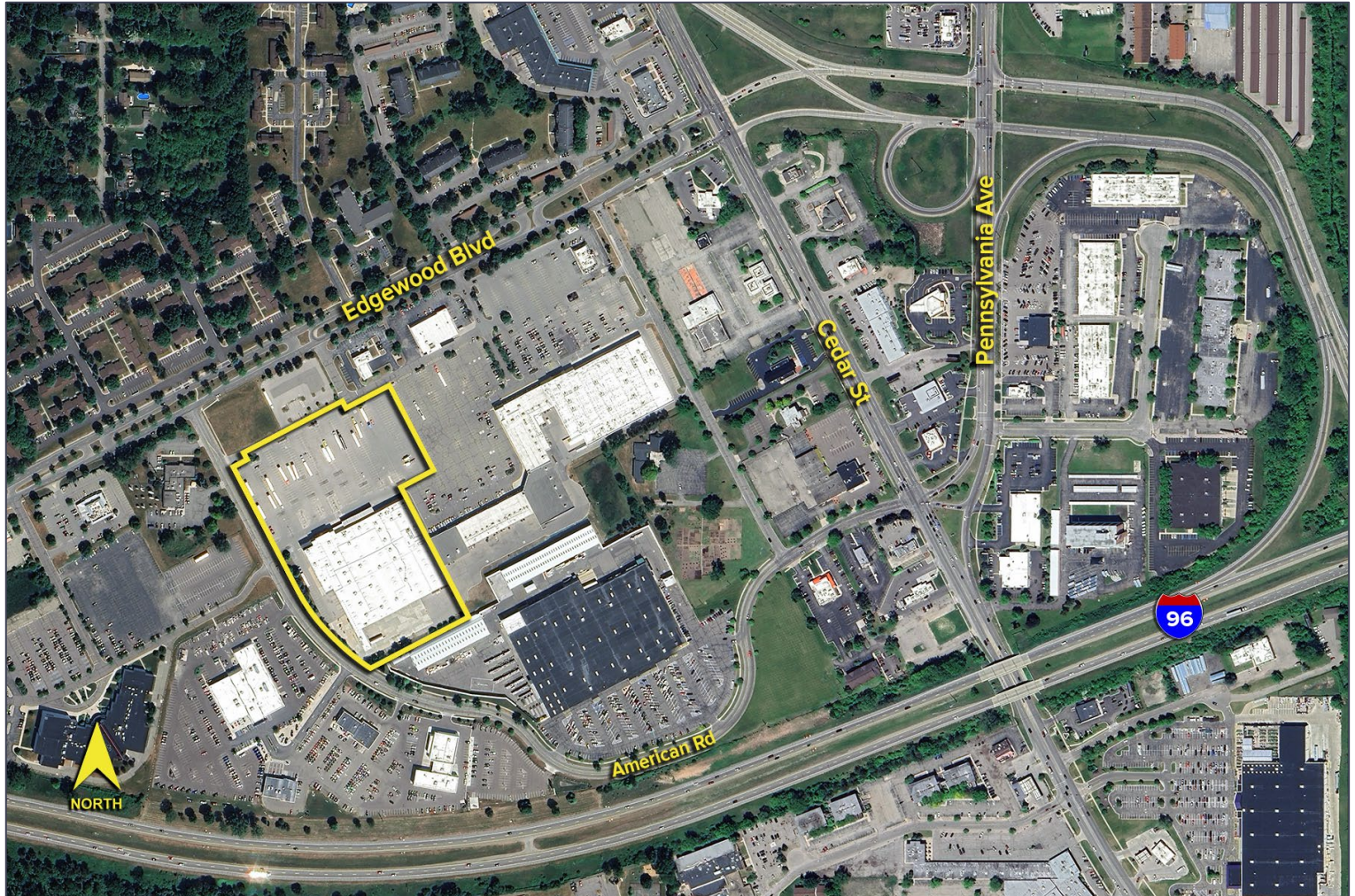
www.signatureassociates.com

340 E. Edgewood Blvd. – Lansing, Michigan

Industrial For Lease

20,000 - 68,467
Square Feet
AVAILABLE

Aerial



For more information, please contact:

JEFF LEMANSKI
(248) 359 0641
jlemanski@signatureassociates.com

SIGNATURE ASSOCIATES
One Towne Square, Suite 1200
Southfield, MI 48076
www.signatureassociates.com

Information is subject to verification and no liability for errors or omissions is assumed. Price is subject to change and listing withdrawal.