

# Former Restaurant

3,500-4,859 SF Available

17651 West 12 Mile Road  
Lathrup Village, MI 48076

Located at the SEC of West 12 Mile and Southfield Road





## Former Restaurant

17651 W 12 Mile Rd | Lathrup Village, MI 48076

For Lease

# Property Highlights

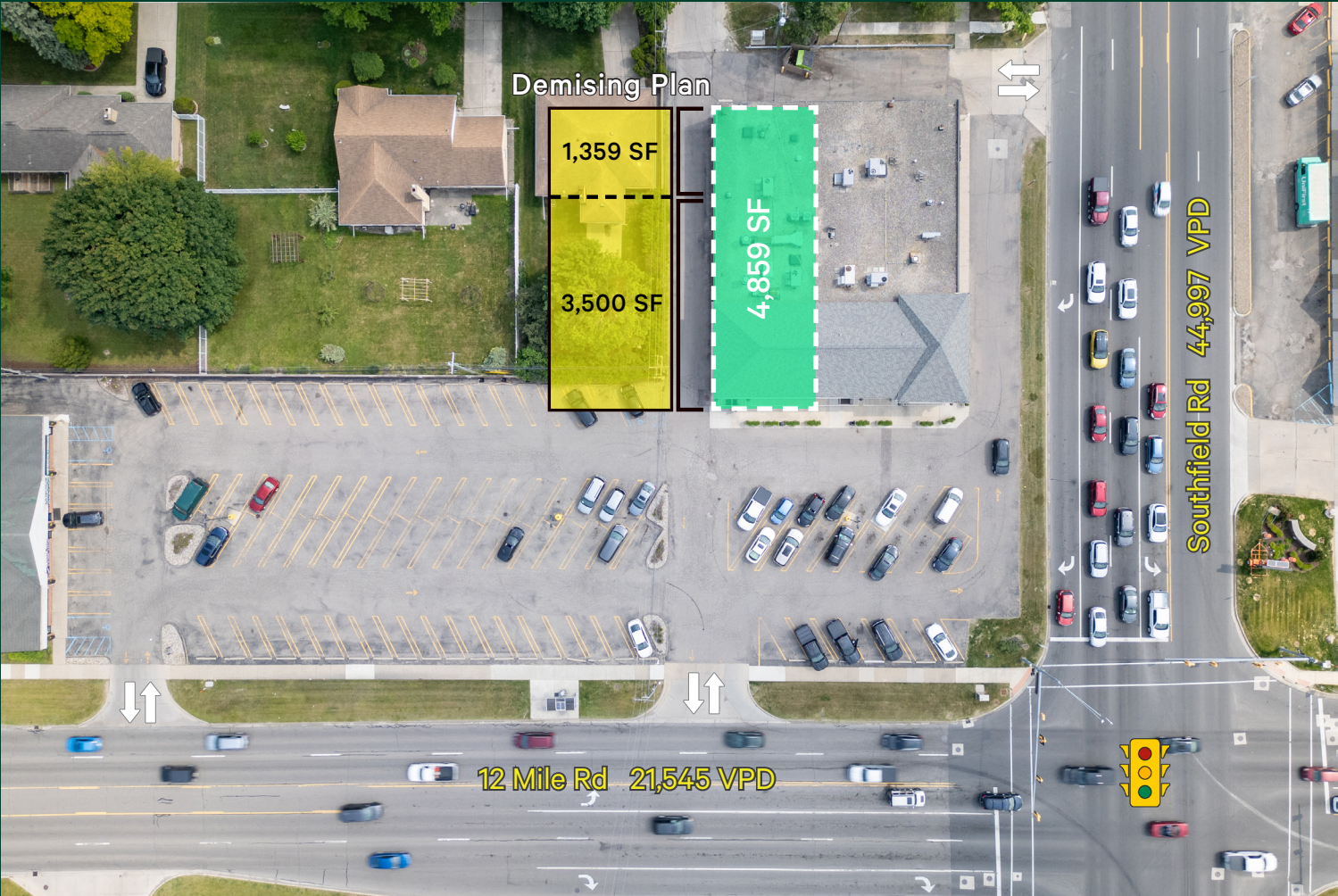
- + 3,500-4,859 SF former restaurant available for lease (can be demised)
- + Join Jersey Mike's and City Outlet
- + Located at the SEC of W 12 Mile and Southfield Road, with traffic counts exceeding 65,000+ VPD
- + Ample Parking Spaces
- + Nearby retailers include Kroger, Meijer, Lowe's, Target, The Home Depot, and many more!
- + **Lease Rate: \$30.00 PSF NNN**
- + **Estimated NNN Charges: \$9.05**

## Macro Aerial



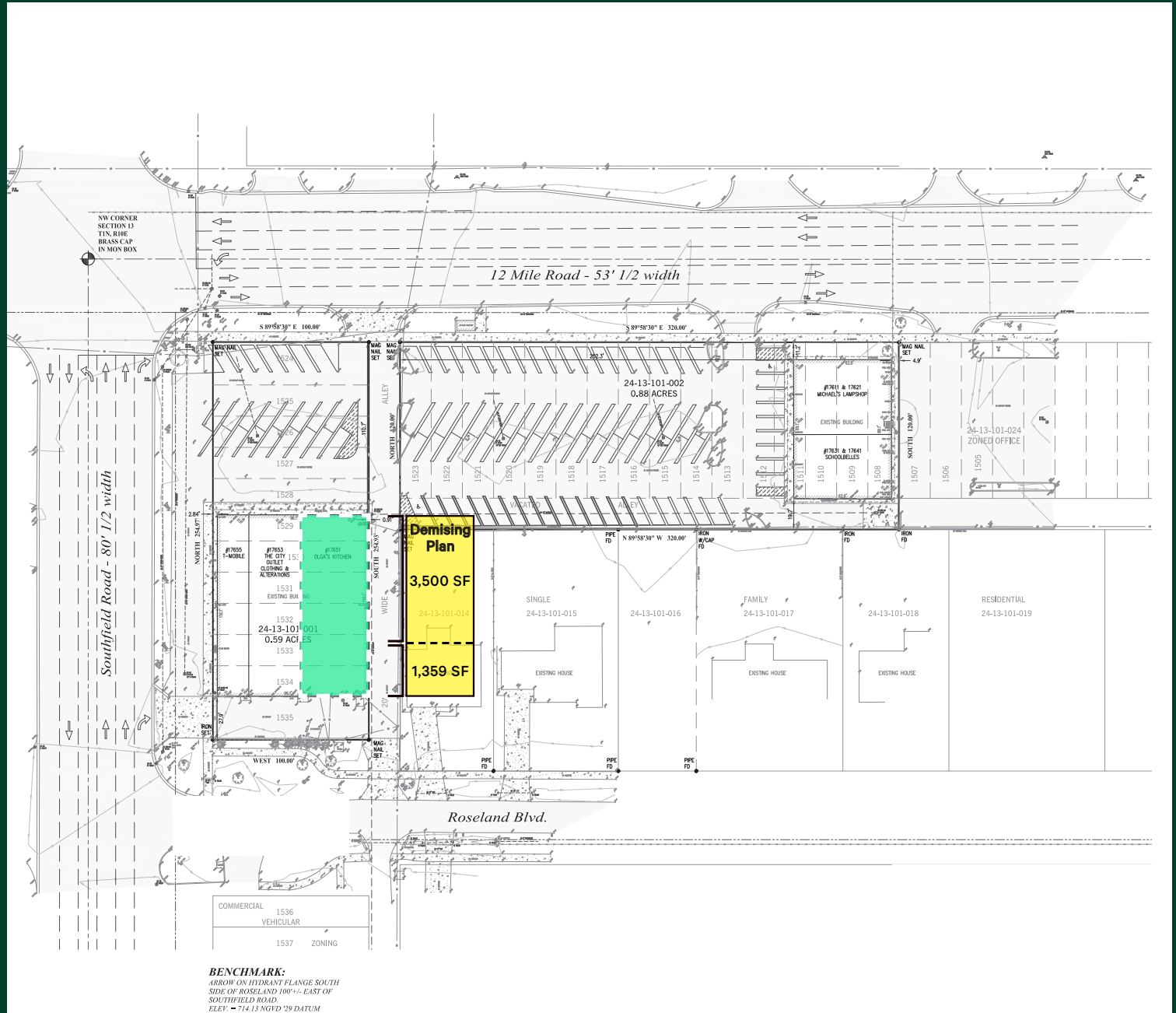


# Micro Aerial



2025 Demographics	1 Mile	3 Miles	5 Miles
Population	12,719	109,942	285,347
Number of Households	6,043	50,574	137,654
Average Household Size	2.19	2.25	2.18
Average Household Income	\$110,652	\$133,325	\$127,256
Daytime Population	13,492	129,339	339,809

## Site Plan





## Former Restaurant

17651 W 12 Mile Rd | Lathrup Village, MI 48076

For Lease

# Property Photos



## Contact Us

### Scott Young

Senior Vice President  
+1 248 936 6832  
scott.young@cbre.com

### Matt Croswell

First Vice President  
+1 248 351 2084  
matt.croswell@cbre.com

### Ashley Young

Vice President  
+1 248 353 5400  
ashley.young@cbre.com

### Jake Vorkapich

Transaction Manager  
+1 248 351 2071  
jake.vorkapich@cbre.com

© 2025 CBRE, Inc. All rights reserved. This information has been obtained from sources believed reliable but has not been verified for accuracy or completeness. CBRE, Inc. makes no guarantee, representation or warranty and accepts no responsibility or liability as to the accuracy, completeness, or reliability of the information contained herein. You should conduct a careful, independent investigation of the property and verify all information. Any reliance on this information is solely at your own risk. CBRE and the CBRE logo are service marks of CBRE, Inc. All other marks displayed on this document are the property of their respective owners, and the use of such marks does not imply any affiliation with or endorsement of CBRE. Photos herein are the property of their respective owners. Use of these images without the express written consent of the owner is prohibited.