

# SUITES AT DORSEY MANOR OFFICE PARK



5130-5136 Dorsey Hall Dr  
Ellicott City, MD

## SUITES AVAILABLE


- 5110 Dorsey Hall 4,000 sq ft
- 5126B - 1000 sq ft
- 5136B - 1,500 sq ft
- 5144B - 1000 sq ft


## KEY HIGHLIGHTS

- Newly renovated space with Ellicott City address, offers a chance to join mix of legal, medical, and education-based tenants in an office park setting
- Less than 3 minutes to a neighborhood retail center with full grocery store and under 10 minutes to other notable national retail brands
- Historic and inviting architecture that mimics the local style of early 19th century homes
- Less than a 5-minute drive to the Clarksville Pike/Old Annapolis Road and Columbia Pike interchange and under 12-minutes to I-95



**DONALD REUWER**

 410-707-7054

 dreuwer@ldandd.com

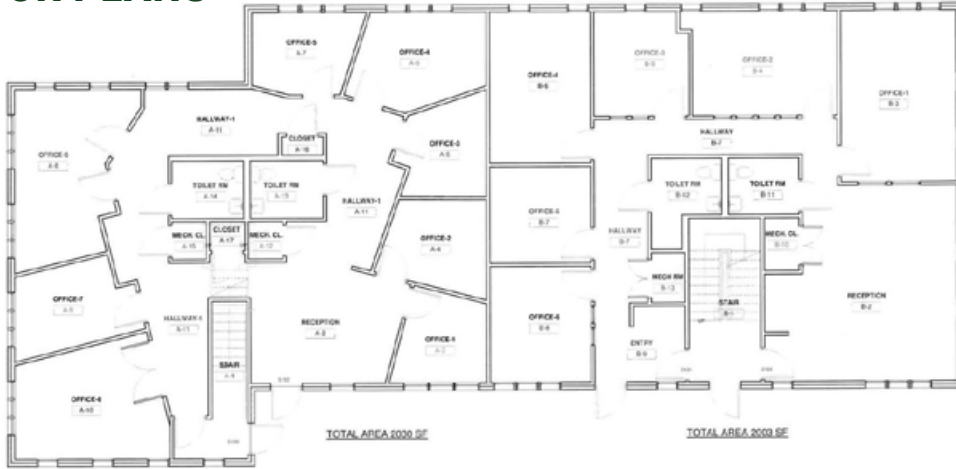


# SUITES AT DORSEY MANOR OFFICE PARK



5130-5136 Dorsey Hall Dr  
Ellicott City, MD

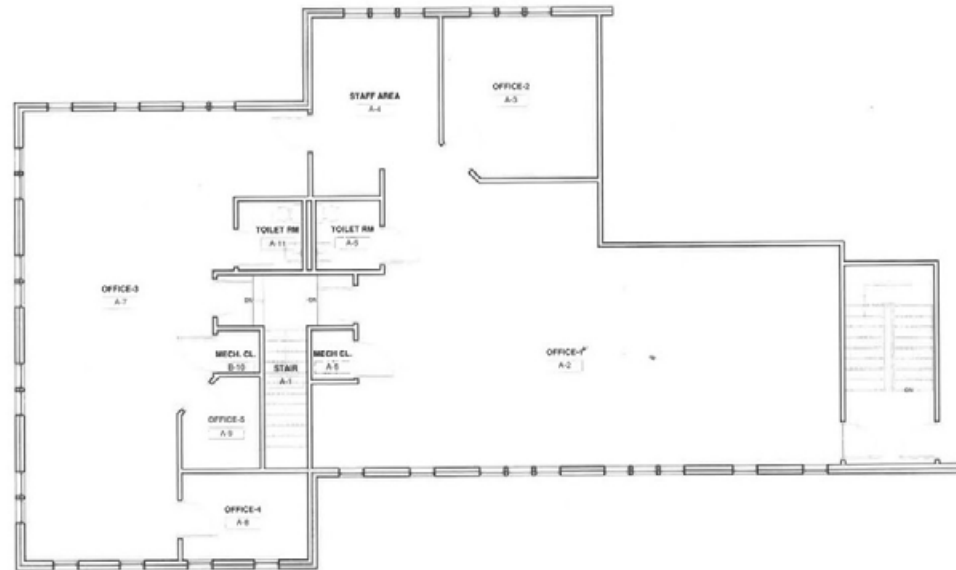
## FLOOR PLANS



First Floor Plan No Dim  
1/4" = 1'-0"

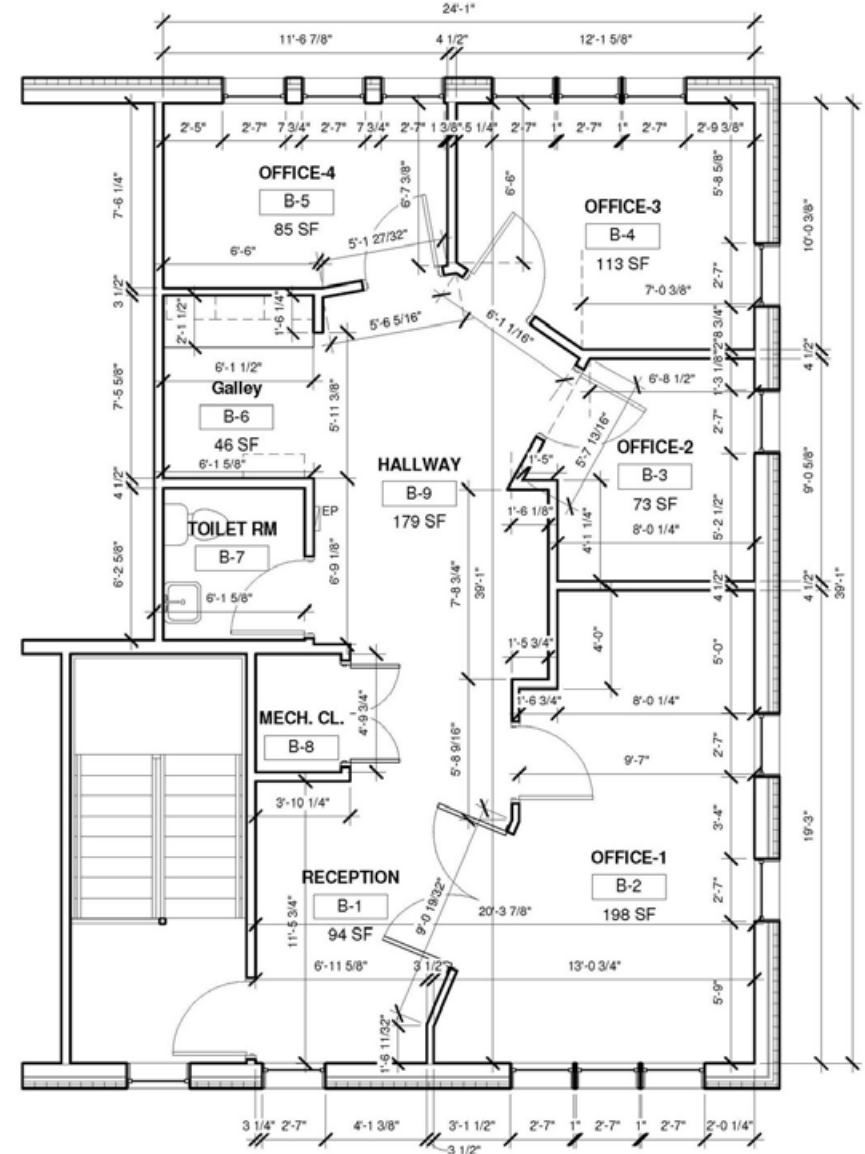
5130 LL

5136 LL



Second Floor Plan No Dim  
1/4" = 1'-0"

5130-5134 UL



TOTAL AREA 980 SF

1 Second Floor Plan  
1/4" = 1'-0"

# SUITES AT DORSEY MANOR OFFICE PARK



5130-5136 Dorsey Hall Dr  
Ellicott City, MD

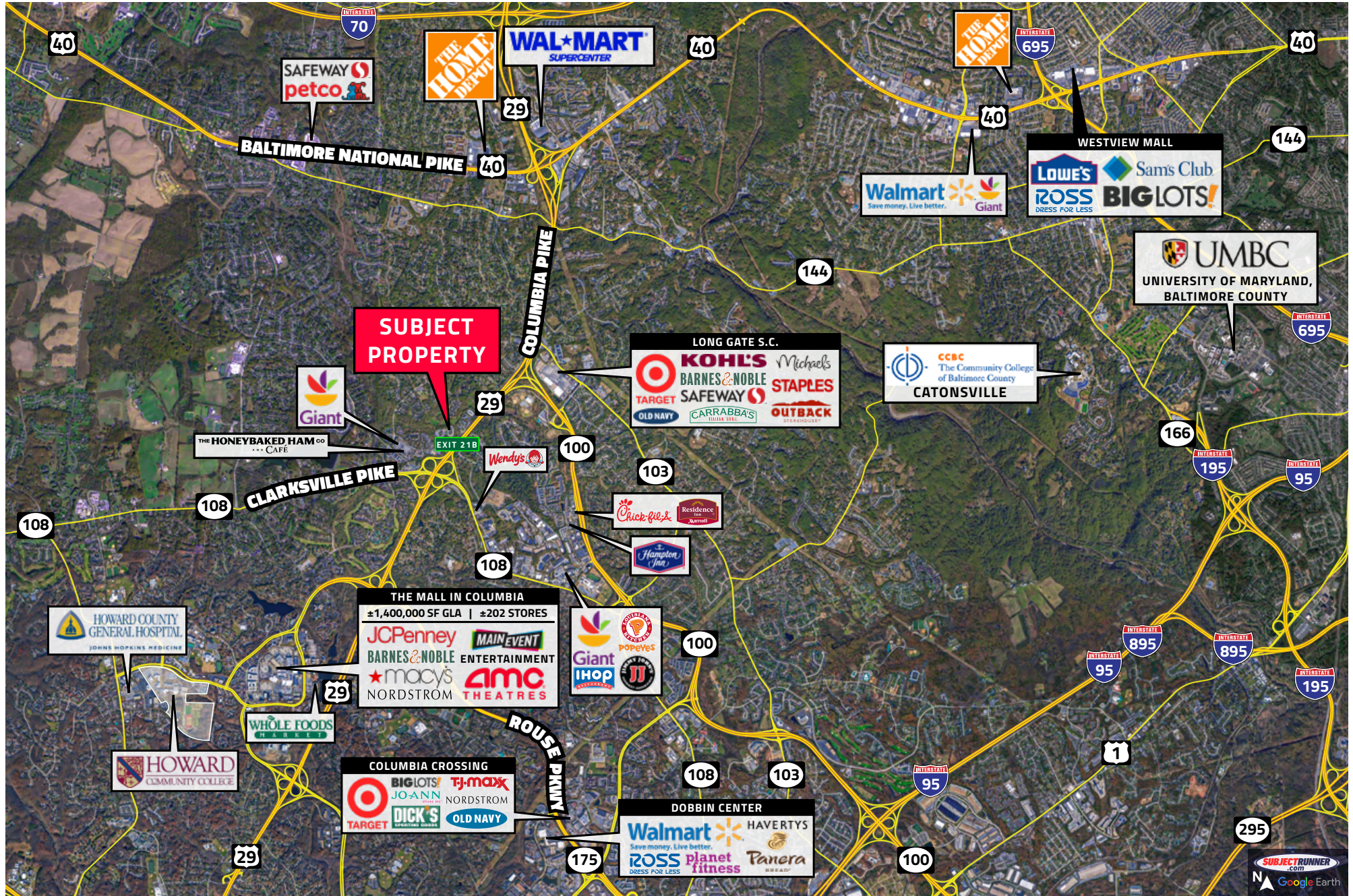
## PHOTOS



# SUITES AT DORSEY MANOR OFFICE PARK

5130-5136 Dorsey Hall Dr  
Ellicott City, MD

## MIDRANGE AERIAL



All information is from sources deemed reliable and is submitted subject to errors, omissions, change of price, terms, prior sales and withdrawals.