

945 SW Martin Downs Blvd, Palm City, FL 34990

FREE-STANDING
OFFICE BUILDING

FOR LEASE



ALEX AYDELOTTE

Broker | Principal

O: 772.223.3646 C: 772.263.1130

E: alex@florida-commercial.net

774 SF

Palm City, FL

309 SE Osceola Street #104 • Stuart, FL 34994 • 772.223.3646 • florida-commercial.net

©Florida Commercial 2021 • This offering is subject to errors, prior to sale/lease, withdrawal, or change in price, terms or conditions without notice.

EXECUTIVE SUMMARY

945 SW MARTIN DOWNS BLVD, PALM CITY, FL 34990 | FREE-STANDING OFFICE BUILDING

SPECS

Available SF:	774 SF
Lease Price:	\$2,950 per month / \$45.74 per SF YR / Gross
Lot Size:	.15 AC
Year Renovated:	2020
Year Built:	1950
Land Use:	CRA Center - Martin County
Zoning:	Old Palm City Redevelopment - Martin County

PROPERTY OVERVIEW

Rare opportunity to lease a smaller free-standing office building with outstanding exposure along busy Martin Downs Blvd, just west of the Palm City Bridge. Fully renovated inside and out, this turnkey space features a welcoming waiting area with separate reception, three private offices, a kitchenette, and updated restroom — all professionally finished and move-in ready. Positioned on a corner lot, the property offers excellent signage, high visibility, and convenient rear parking in desirable Palm City, Martin County, providing strong daily traffic and easy access for clients and staff.



ALEX AYDELOTTE
Broker | Principal
O: 772.223.3646 C: 772.263.1130
E: alex@florida-commercial.net

774 SF | **Palm City, FL**



FLORIDA
COMMERCIAL
REAL ESTATE COMPANY

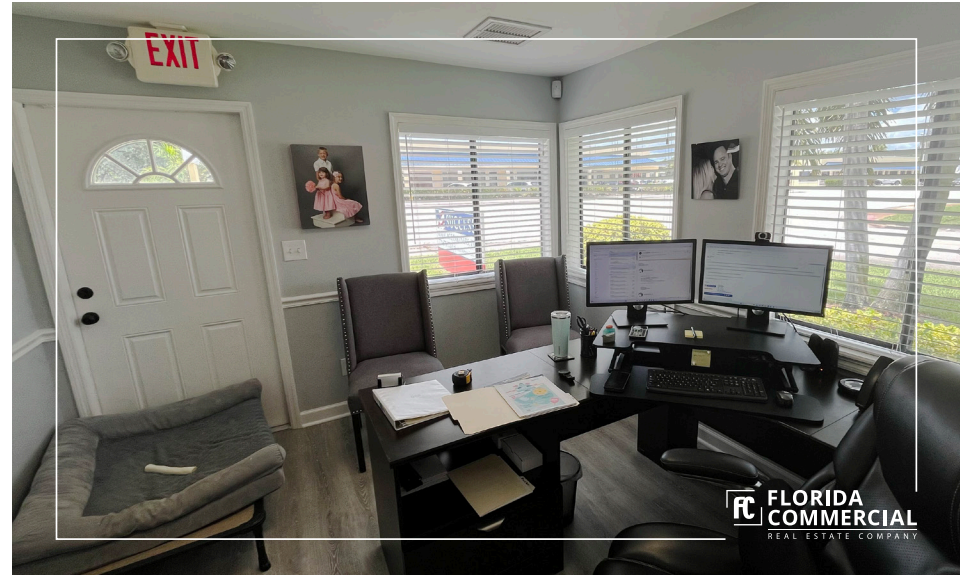


ALEX AYDELOTTE
Broker | Principal
O: 772.223.3646 C: 772.263.1130
E: alex@florida-commercial.net

774 SF | **Palm City, FL**

309 SE Osceola Street #104 • Stuart, FL 34994 • 772.223.3646 • florida-commercial.net

©Florida Commercial 2021 • This offering is subject to errors, prior to sale/lease, withdrawal, or change in price, terms or conditions without notice.



ALEX AYDELOTTE
 Broker | Principal
 O: 772.223.3646 C: 772.263.1130
 E: alex@florida-commercial.net

774 SF | Palm City, FL

309 SE Osceola Street #104 • Stuart, FL 34994 • 772.223.3646 • florida-commercial.net

©Florida Commercial 2021 • This offering is subject to errors, prior to sale/lease, withdrawal, or change in price, terms or conditions without notice.



FLORIDA COMMERCIAL
REAL ESTATE COMPANY



ALEX AYDELOTTE
Broker | Principal
O: 772.223.3646 C: 772.263.1130
E: alex@florida-commercial.net

774 SF | Palm City, FL

309 SE Osceola Street #104 • Stuart, FL 34994 • 772.223.3646 • florida-commercial.net

©Florida Commercial 2021 • This offering is subject to errors, prior to sale/lease, withdrawal, or change in price, terms or conditions without notice.

945 SW MARTIN DOWNS BLVD, PALM CITY, FL 34990 FREE-STANDING OFFICE BUILDING



1 MILE

3 MILES

5 MILES

6,682

42.1K

84.8K

Median Age

48.9

47.1

47.5



1 MILE

3 MILES

5 MILES

2.9K

17.5K

35.4K

2.3

2.4

2.4

\$73.3K

\$79.8K

\$77.9K



Broker | Principal

O: 772.223.3646 C: 772.263.1130

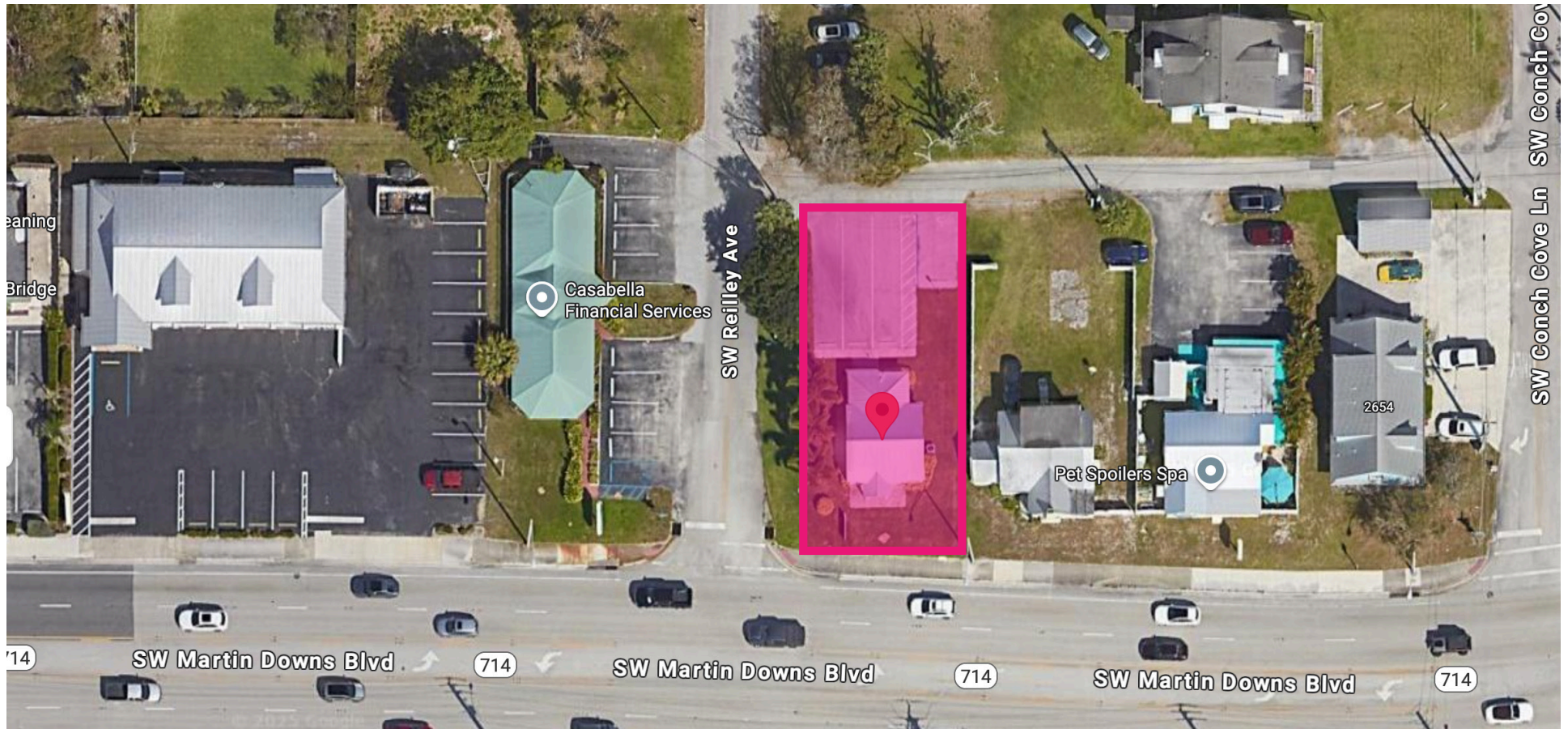
E: alex@florida-commercial.net

774 SF

Palm City, FL

AERIAL VIEW

945 SW MARTIN DOWNS BLVD, PALM CITY, FL 34990 | FREE-STANDING OFFICE BUILDING



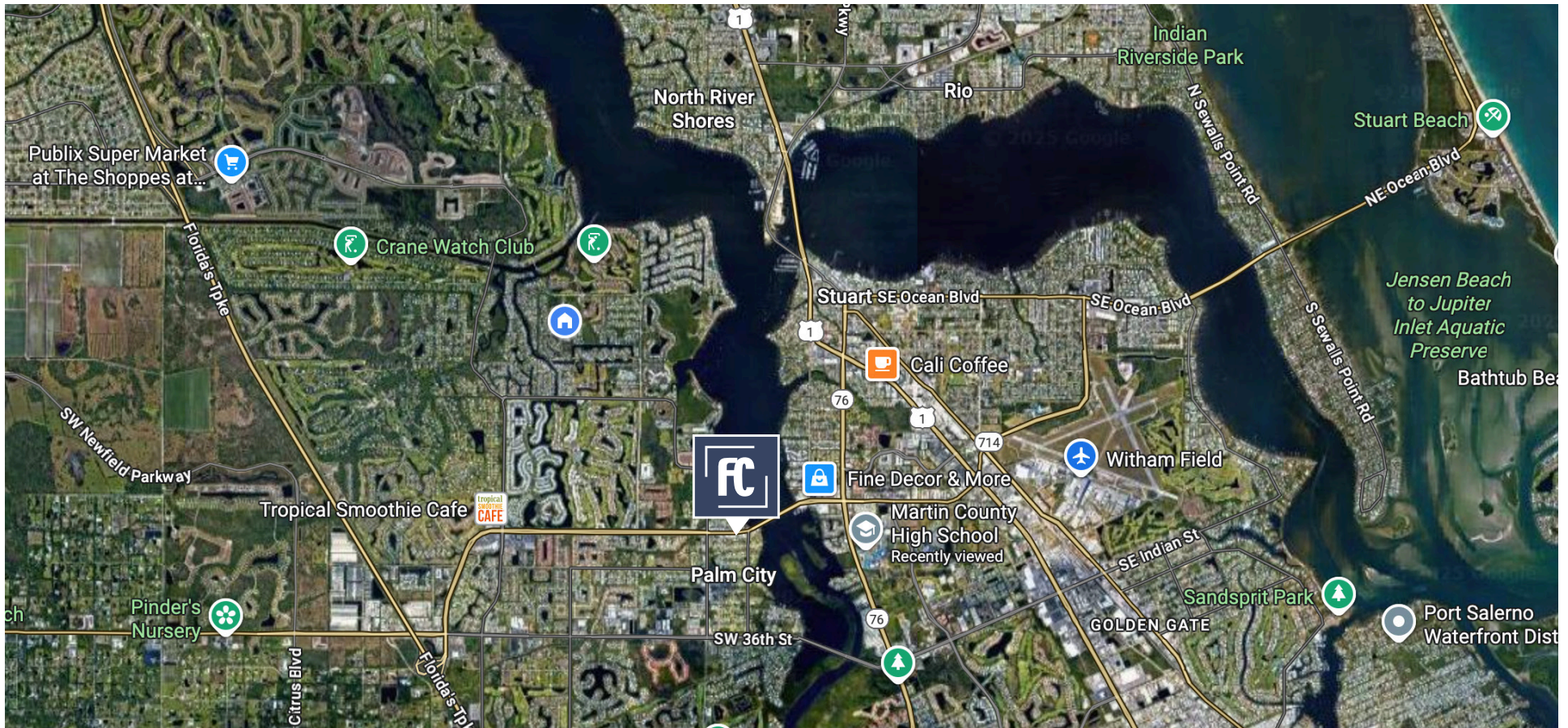
ALEX AYDELOTTE
Broker | Principal
O: 772.223.3646 C: 772.263.1130
E: alex@florida-commercial.net

774 SF | Palm City, FL

LOCATION MAP

945 SW MARTIN DOWNS BLVD, PALM CITY, FL 34990

FREE-STANDING OFFICE BUILDING



ALEX AYDELOTTE

Broker | Principal

O: 772.223.3646 C: 772.263.1130

E: alex@florida-commercial.net

774 SF

Palm City, FL