



Office | For Sale - 1,936 SF / Lease - 210 & 450 SF

Trestlewood Office Space for Sale Turnkey Office Condominium

5084 Lovers Lane
Portage, MI 49002

Overview

Well-maintained 1,936 SF office condominium located in the desirable Trestlewood Office Park. This bright, professional space features an abundance of windows that provide excellent natural light throughout, creating an inviting work environment for employees and clients alike. The property is available for sale, with select office suites also offered for lease, providing flexibility for owner-users, investors, or businesses seeking a professional office setting in a well-established office park.

Lease Price \$13.33 - \$40.00/SF Gross

Sale Price

\$214,999

Eric Bolles

269.373.8108 [direct]
269.535.4576 [mobile]
ebolles@ccmichigan.com

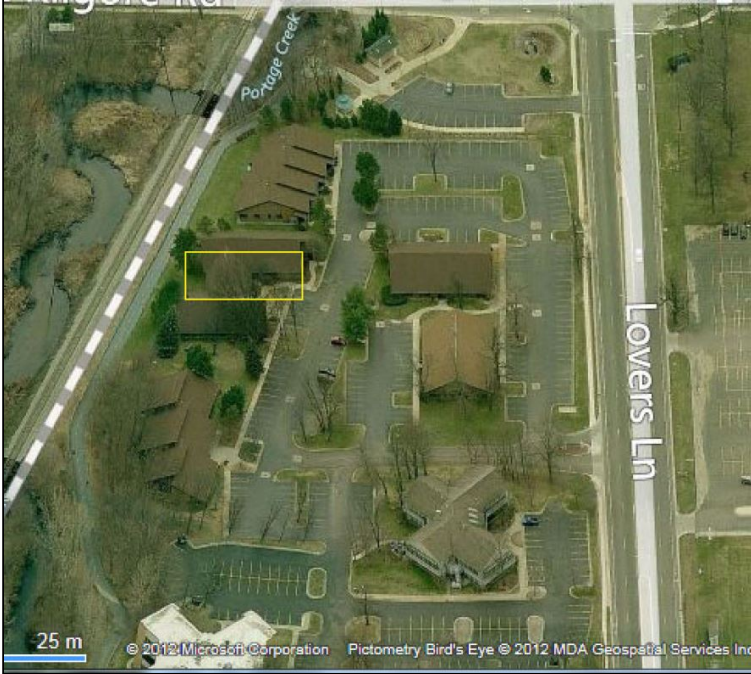
Thomas Keyte

269.373.8103 [direct]
269.370.7616 [mobile]
tkeyte@ccmichigan.com





PROPERTY FEATURES



County:	Kalamazoo
Municipality:	City of Portage
Gross Size:	1,936 SF
Available for Lease:	210 - 660 SF
Buildings / Units:	1 Building / 1 Unit
Building Levels:	1 Level
Total Acres:	0.25 Acres
Year Built:	1982
Zoning Code / Description:	B-2 / Community Business
Between Streets:	Unifab & Kilgore
Construction:	Siding / Brick / Concrete
Sewer / Water:	Public / Public
Heat Type / Source:	Forced Air / Gas
Restrooms:	2 / Common Area
Air Conditioning:	Central Air
Utilities Attached:	Gas and Electric



5084 Lovers Lane | Portage, MI 49002

Eric Bolles
 269.373.8108 [direct]
 269.535.4576 [mobile]
 ebolles@ccmichigan.com

Thomas Keyte
 269.373.8103 [direct]
 269.370.7616 [mobile]
 tkeyte@ccmichigan.com





INTERIOR PHOTOS



5084 Lovers Lane | Portage, MI 49002

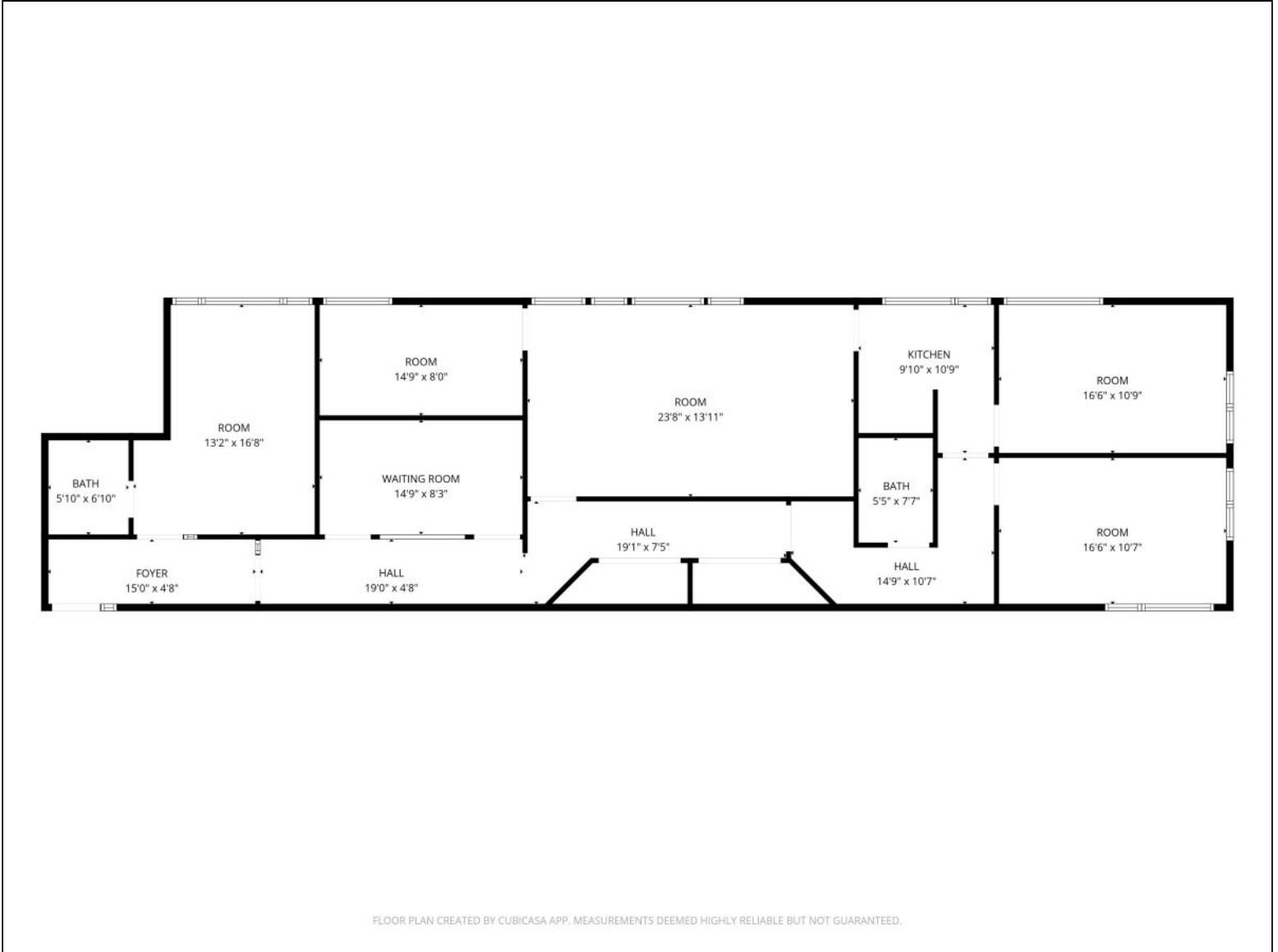
Eric Bolles
269.373.8108 [direct]
269.535.4576 [mobile]
ebolles@ccmichigan.com

Thomas Keyte
269.373.8103 [direct]
269.370.7616 [mobile]
tkeyte@ccmichigan.com





FLOOR PLAN



FLOOR PLAN CREATED BY CUBICASA APP. MEASUREMENTS DEEMED HIGHLY RELIABLE BUT NOT GUARANTEED.

5084 Lovers Lane | Portage, MI 49002

Eric Bolles
269.373.8108 [direct]
269.535.4576 [mobile]
ebolles@ccmichigan.com

Thomas Keyte
269.373.8103 [direct]
269.370.7616 [mobile]
tkeyte@ccmichigan.com





AERIAL PHOTO



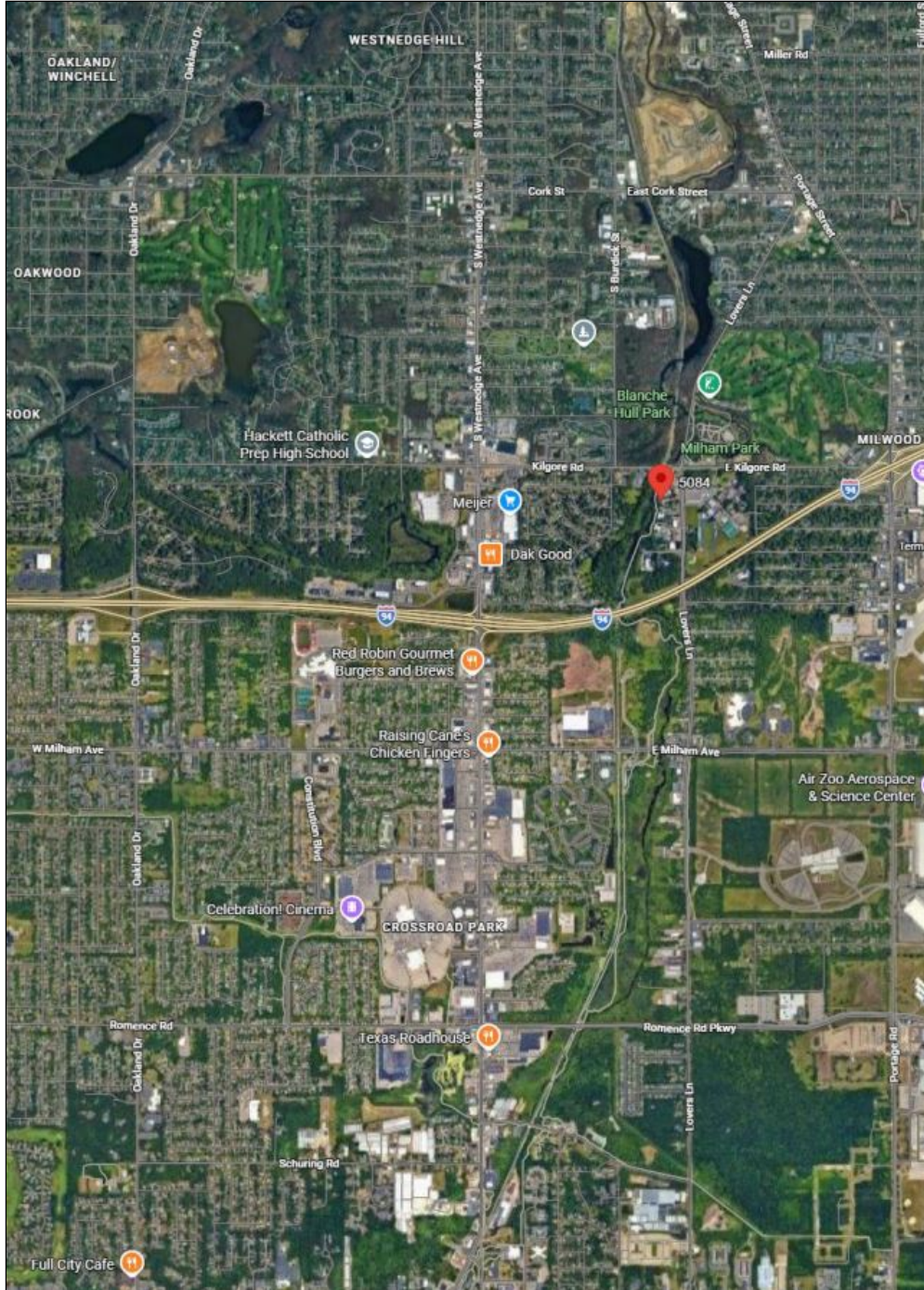
5084 Lovers Lane | Portage, MI 49002

Eric Bolles
269.373.8108 [direct]
269.535.4576 [mobile]
ebolles@ccmichigan.com

Thomas Keyte
269.373.8103 [direct]
269.370.7616 [mobile]
tkeyte@ccmichigan.com



LOCATION AERIAL



5084 Lovers Lane | Portage, MI 49002

Eric Bolles
269.373.8108 [direct]
269.535.4576 [mobile]
ebolles@ccmichigan.com

Thomas Keyte
269.373.8103 [direct]
269.370.7616 [mobile]
tkeyte@ccmichigan.com

