

FOR LEASE



75 HAMMOND STREET

WORCESTER, MA 01610



**Kelleher
& Sadowsky**

Voted Best Commercial Real Estate Brokerage - Worcester Business Journal

MEGHAN LIDDY

SVP Capital Markets

liddy@kelleher-sadowsky.com

O: 508.635.6797

C: 508.736.9250

DREW HIGGINS

Vice President

higgins@kelleher-sadowsky.com

O: 508.635.6784

C: 508.735.1783

EXECUTIVE SUMMARY



OFFERING SUMMARY

Asking Rent:	\$8.00 - \$10.00 SF/yr (+ Utilities)
Property Type:	Office/Warehouse
Available SF:	2,500 - 25,000 SF
Lot Size:	93,218 SF
Zoning:	MG-2
Traffic Count:	11,208
Utilities:	Sewer, Gas

PROPERTY OVERVIEW

75 Hammond Street is minutes from Downtown Worcester and is within walking distance of the Canal District and Polar Park (home of the Worcester Red Sox). The canal district in Worcester, MA has events, bars, restaurants, clubs, and retail and is widely acknowledged as the city's most actively developing area. This Property has easy access to all major highways (I-190, I-290, Route 146, Route 20) and is less than a mile from the central business district (CBD).

A 2021 Top 100 Best Places to Live in America award winner, Worcester, MA is New England's second-largest city. The city is centrally located approximately 50 minutes west of Boston and 45 minutes north of Providence, Rhode Island.



Voted Best Commercial Real Estate Brokerage - Worcester Business Journal
120 Front Street, Suite 210 | Worcester, MA 01608 | 508.755.0707 | kelleher-sadowsky.com

MEGHAN LIDDY

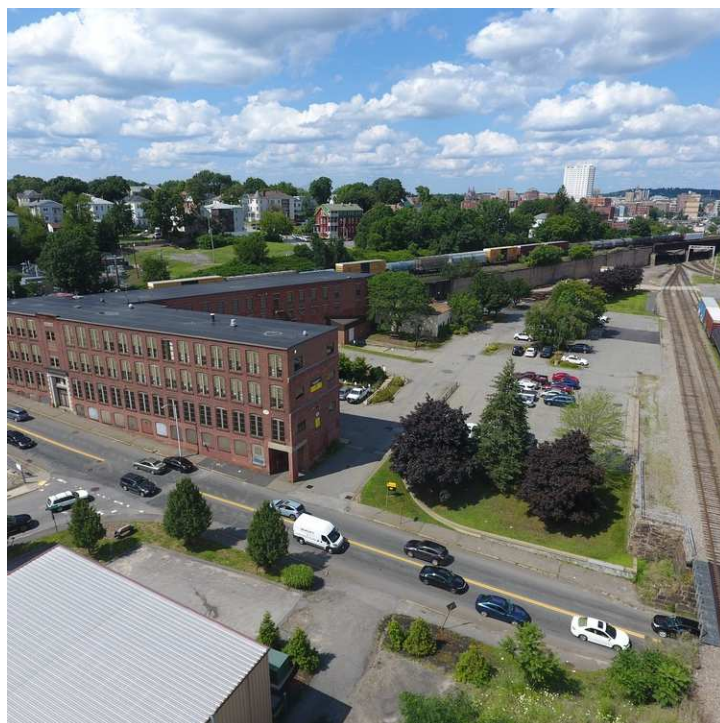
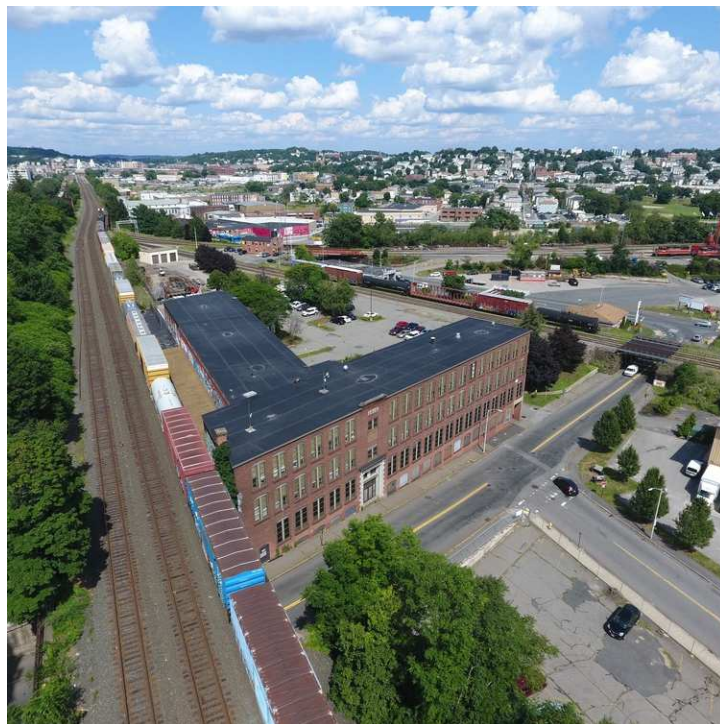
SVP Capital Markets
liddy@kelleher-sadowsky.com
O: 508.635.6797
C: 508.736.9250

DREW HIGGINS

Vice President
higgins@kelleher-sadowsky.com
O: 508.635.6784
C: 508.735.1783

FOR LEASE | 75 HAMMOND STREET

ADDITIONAL PHOTOS



Voted Best Commercial Real Estate Brokerage - Worcester Business Journal

120 Front Street, Suite 210 | Worcester, MA 01608 | 508.755.0707 | kelleher-sadowsky.com

MEGHAN LIDDY

SVP Capital Markets

liddy@kelleher-sadowsky.com

O: 508.635.6797

C: 508.736.9250

DREW HIGGINS

Vice President

higgins@kelleher-sadowsky.com

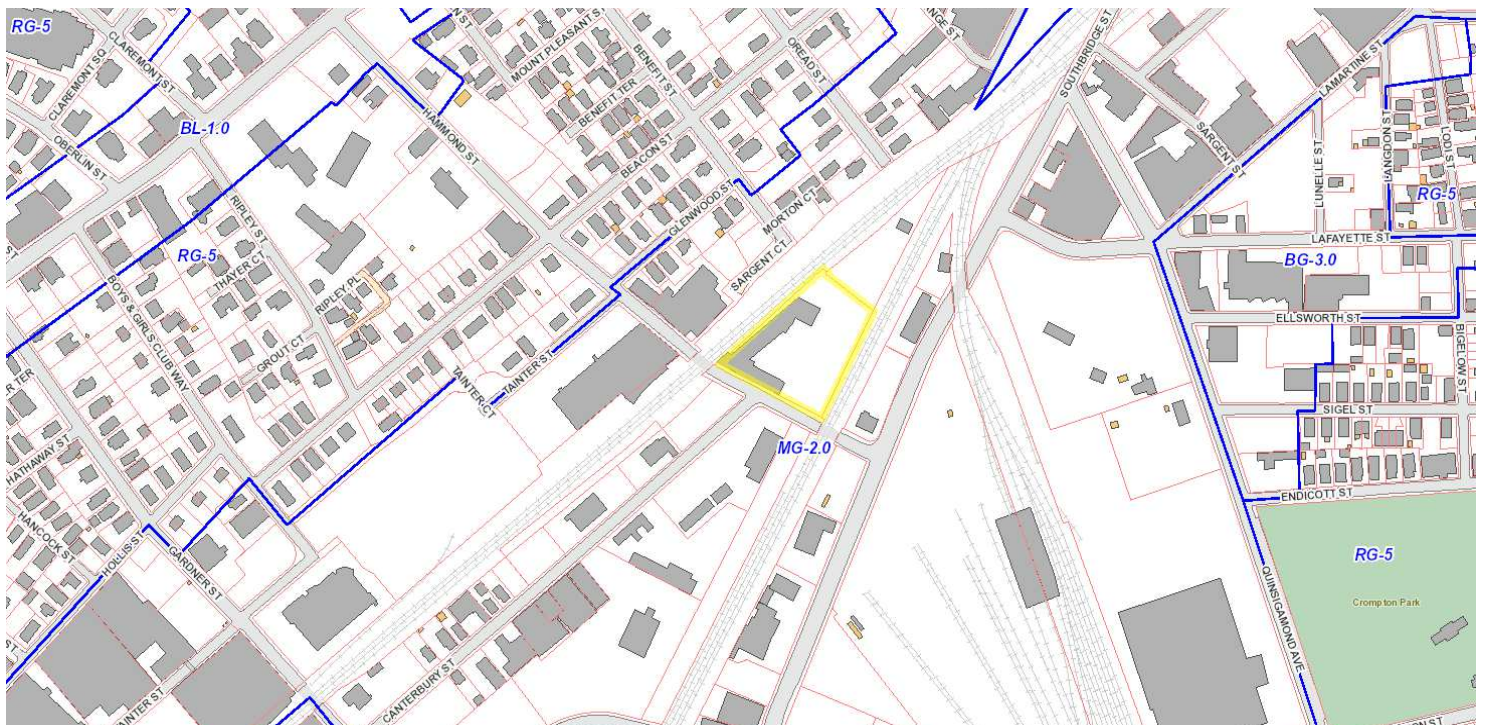
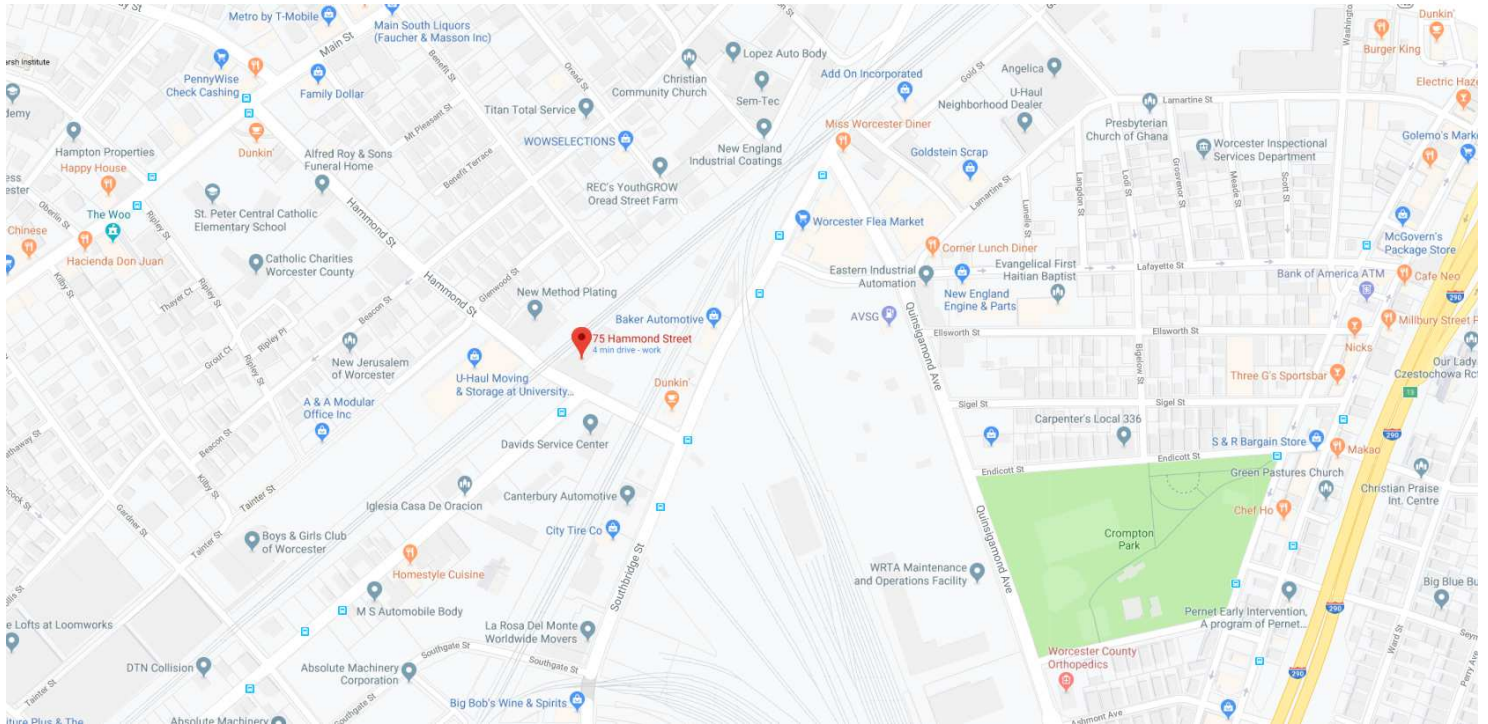
O: 508.635.6784

C: 508.735.1783

This information has been obtained from sources believed reliable. We have not verified it and make no guarantee, warranty or representation about it. Any projections, opinions, assumptions or estimates used are for example only and do not represent the current or future performance of the property. You and your advisors should conduct an independent investigation of the property to determine to your own satisfaction the suitability of the property for your needs.

FOR LEASE | 75 HAMMOND STREET

STREET MAP AND PLOT PLAN



Voted Best Commercial Real Estate Brokerage - Worcester Business Journal
120 Front Street, Suite 210 | Worcester, MA 01608 | 508.755.0707 | kelleher-sadowsky.com

MEGHAN LIDDY

SVP Capital Markets

liddy@kelleher-sadowsky.com

O: 508.635.6797

C: 508.736.9250

DREW HIGGINS

Vice President

higgins@kelleher-sadowsky.com

O: 508.635.6784

C: 508.735.1783

This information has been obtained from sources believed reliable. We have not verified it and make no guarantee, warranty or representation about it. Any projections, opinions, assumptions or estimates used are for example only and do not represent the current or future performance of the property. You and your advisors should conduct an independent investigation of the property to determine to your own satisfaction the suitability of the property for your needs.

WORCESTER'S LARGEST EMPLOYERS



UMassMemorial
Health Care



RANDWHITNEY



The
Hanover
Insurance Group®



RELIANT
MEDICAL GROUP
Part of Optum®



WPI



COLLEGE OF THE
Holy Cross

CLARK
UNIVERSITY



SAINT VINCENT
HOSPITAL



WORCESTER
STATE
UNIVERSITY



Voted Best Commercial Real Estate Brokerage - Worcester Business Journal

120 Front Street, Suite 210 | Worcester, MA 01608 | 508.755.0707 | kelleher-sadowsky.com

MEGHAN LIDDY

SVP Capital Markets

liddy@kelleher-sadowsky.com

O: 508.635.6797

C: 508.736.9250

DREW HIGGINS

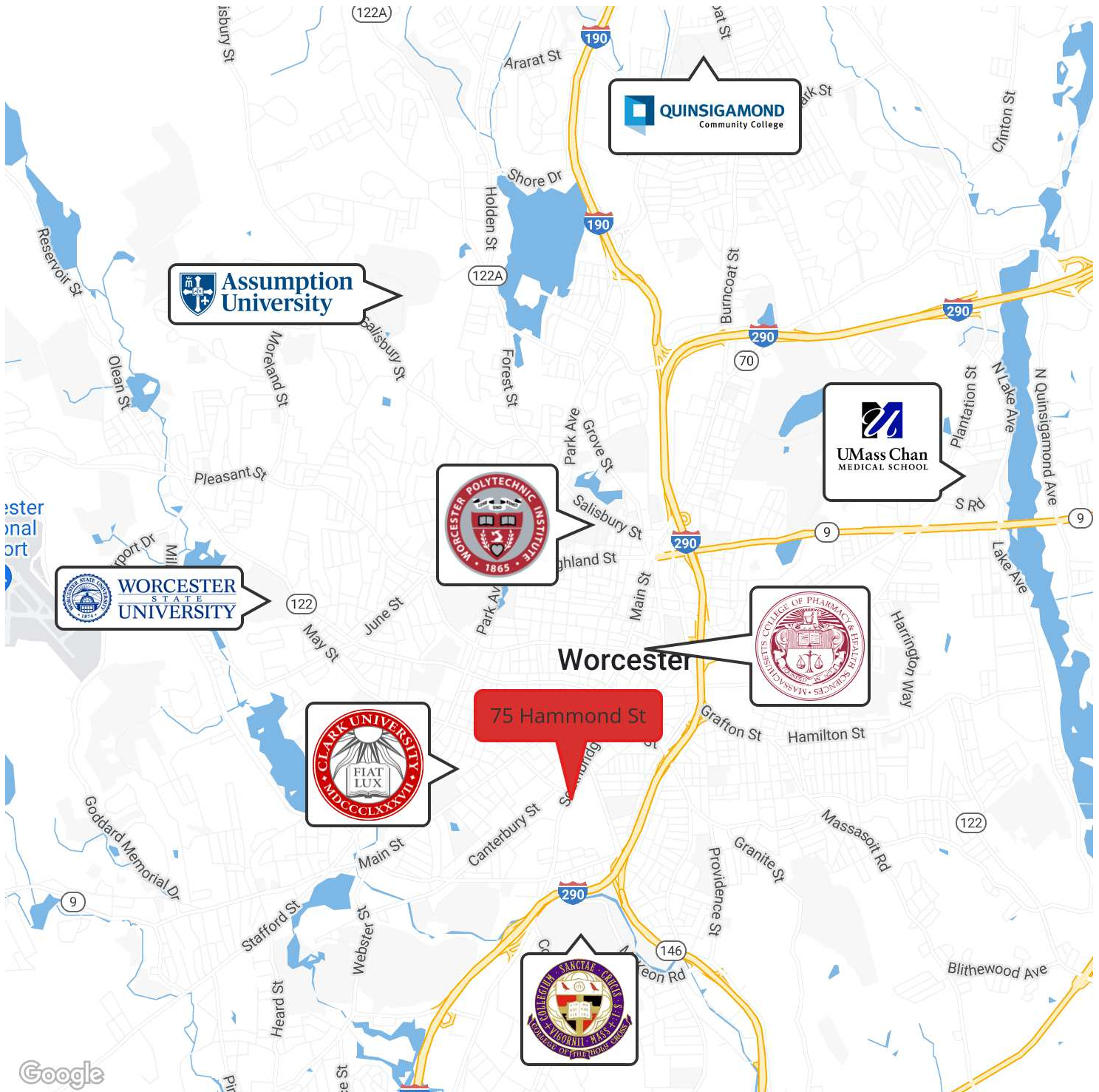
Vice President

higgins@kelleher-sadowsky.com

O: 508.635.6784

C: 508.735.1783

COLLEGE & UNIVERSITY MAP



Voted Best Commercial Real Estate Brokerage - Worcester Business Journal

120 Front Street, Suite 210 | Worcester, MA 01608 | 508.755.0707 | kelleher-sadowsky.com

MEGHAN LIDDY

SVP Capital Markets

liddy@kelleher-sadowsky.com

O: 508.635.6797

C: 508.736.9250

DREW HIGGINS

Vice President

higgins@kelleher-sadowsky.com

O: 508.635.6784

C: 508.735.1783