

Specifications

±6.6 Acres
TOTAL ACREAGE

Block 213.01, Lots 95 & 96
BLOCK & LOTS

O3
ZONING

\$35,819.49
TAXES (2023)

1.33 Miles to Route 73
2.66 Miles to Route 70
4.2 Miles to Route 30
4.6 Miles to I-295
4.65 Miles to NJ Turnpike
9.93 Miles to Route 206
ACCESSIBILITY

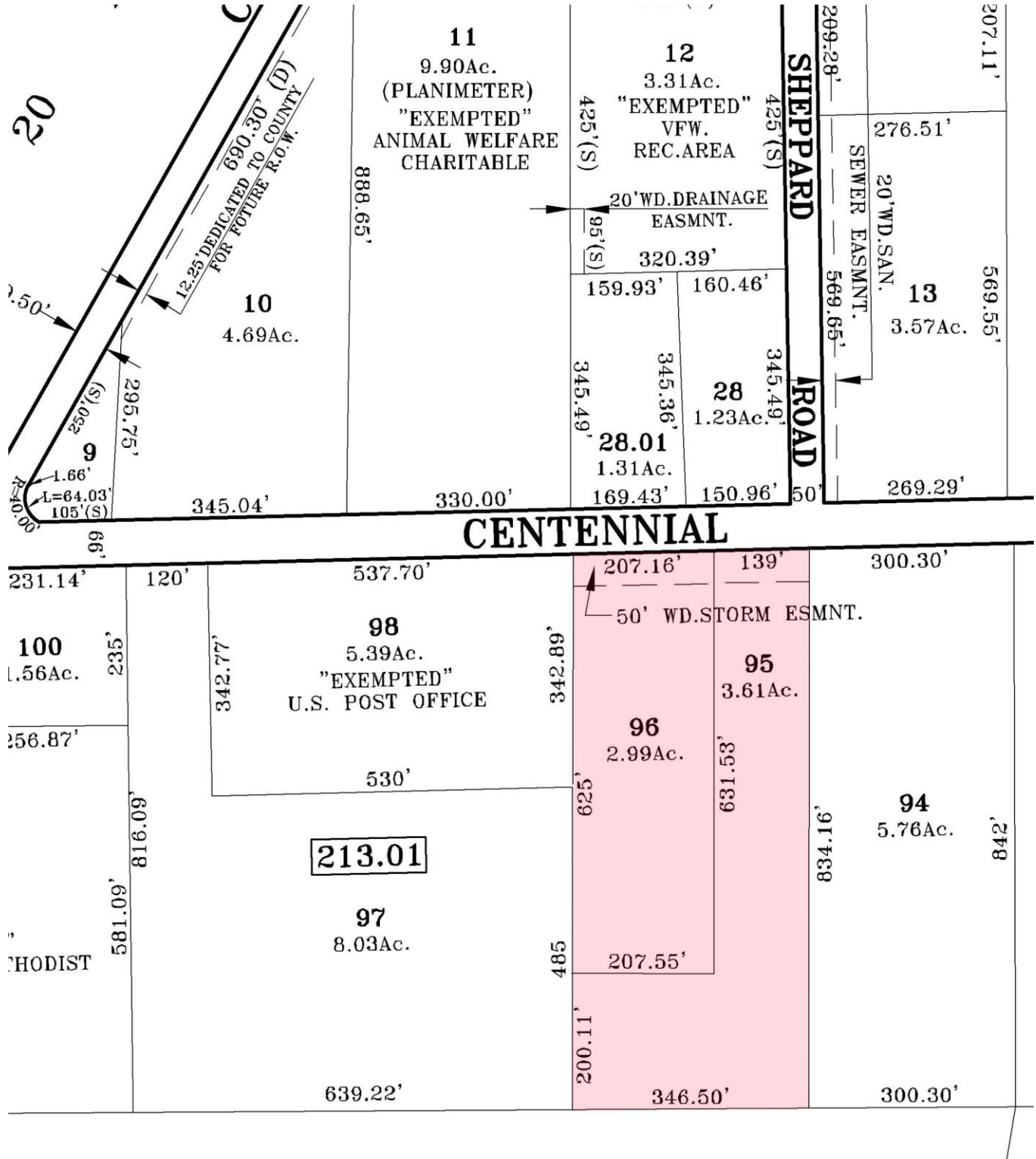
Please Call for Sale Price
SALE PRICE

For additional property information or to arrange an inspection, please contact the exclusive brokers:

Rick Vanderbeck *Executive Director* 973.379.6644 x 237 RVanderbeck@blauberg.com

Nicholas Bio *Associate* 973.379.6644 x 233 NBio@blauberg.com

Alex Dombrowski 973.379.6644 x 229 ADombrowski@blauberg.com



For additional property information or to arrange an inspection, please contact the exclusive brokers:

Rick Vanderbeck *Executive Director* 973.379.6644 x 237 RVanderbeck@blauberg.com

Nicholas Bio *Associate* 973.379.6644 x 233 NBio@blauberg.com

Alex Dombrowski 973.379.6644 x 229 ADombrowski@blauberg.com



5 MILES

- Total Population: 192,631
- Households: 76,859
- Median Household Income: \$116,896
- Average Household Size: 2.5
- Transportation to Work: 106,995
- Labor Force: 158,809

10 MILES

- Total Population: 708,488
- Households: 277,118
- Median Household Income: \$107,267
- Average Household Size: 2.5
- Transportation to Work: 385,440
- Labor Force: 580,069

15 MILES

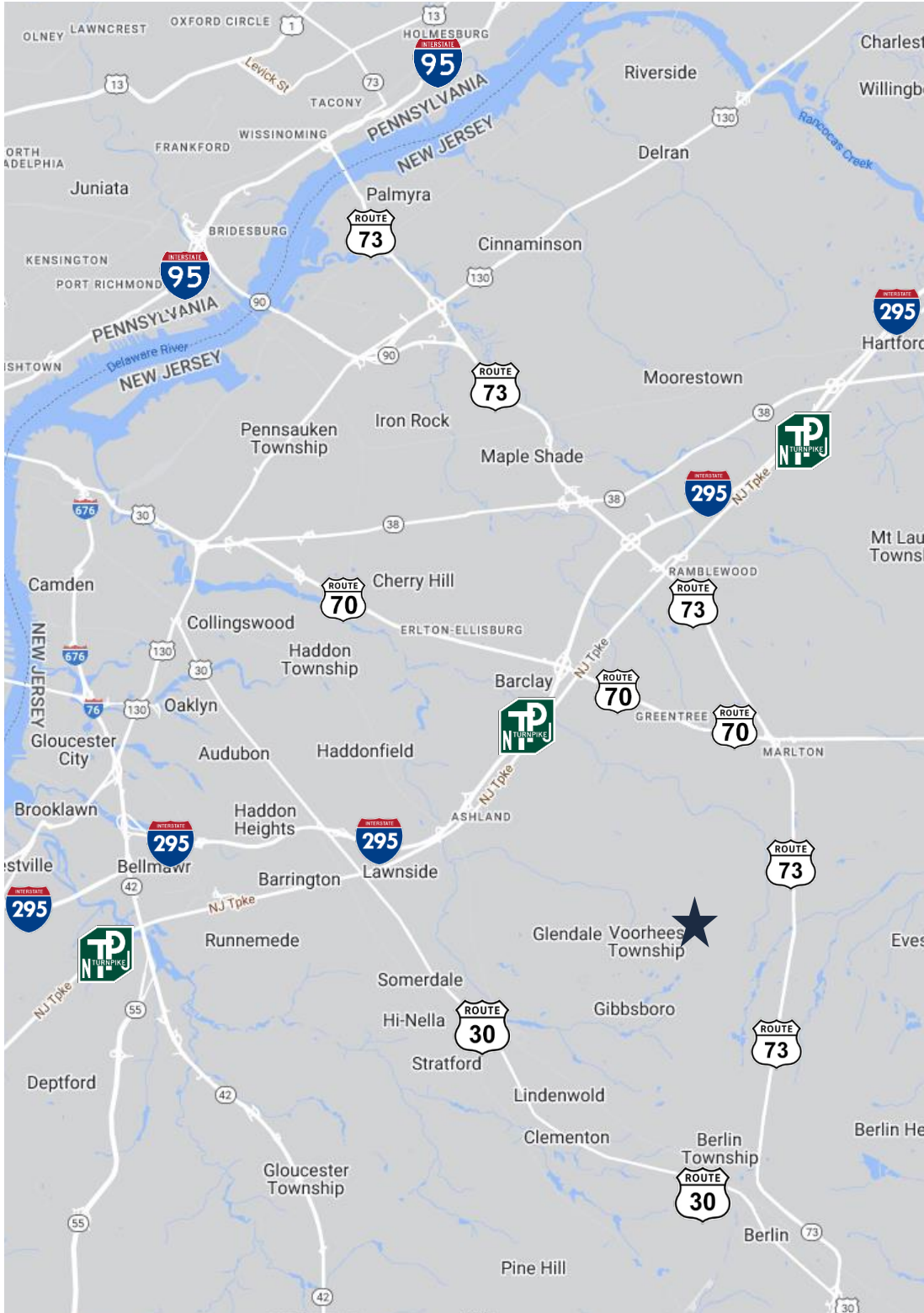
- Total Population: 1.93M
- Households: 764,659
- Median Household Income: \$91,081
- Average Household Size: 2.5
- Transportation to Work: 1.02M
- Labor Force: 1.59M

For additional property information or to arrange an inspection, please contact the exclusive brokers:

Rick Vanderbeck *Executive Director* 973.379.6644 x 237 RVanderbeck@blauberg.com

Nicholas Bio *Associate* 973.379.6644 x 233 NBio@blauberg.com

Alex Dombrowski 973.379.6644 x 229 ADombrowski@blauberg.com



ACCESSIBILITY

	±1.33 MI Route 73
	2.66 MI Route 70
	4.2 MI Route 30
	4.6 MI I-295
	4.65 MI NJ Turnpike
	9.93 MI Route 206

For additional property information or to arrange an inspection, please contact the exclusive brokers:

Rick Vanderbeck *Executive Director* 973.379.6644 x 237 RVanderbeck@blauberg.com
 Nicholas Bio *Associate* 973.379.6644 x 233 NBio@blauberg.com
 Alex Dombrowski 973.379.6644 x 229 ADombrowski@blauberg.com

The information contained herein has been obtained from sources considered to be reliable, but no guarantee of its accuracy is made by this company. In addition, no representation is made respecting zoning, condition of title, dimensions, or any matters of a legal or environmental nature. Such matters should be referred to legal counsel for determination. Terms and conditions are subject to change without prior notice. Subject to errors and omissions.