

# 111

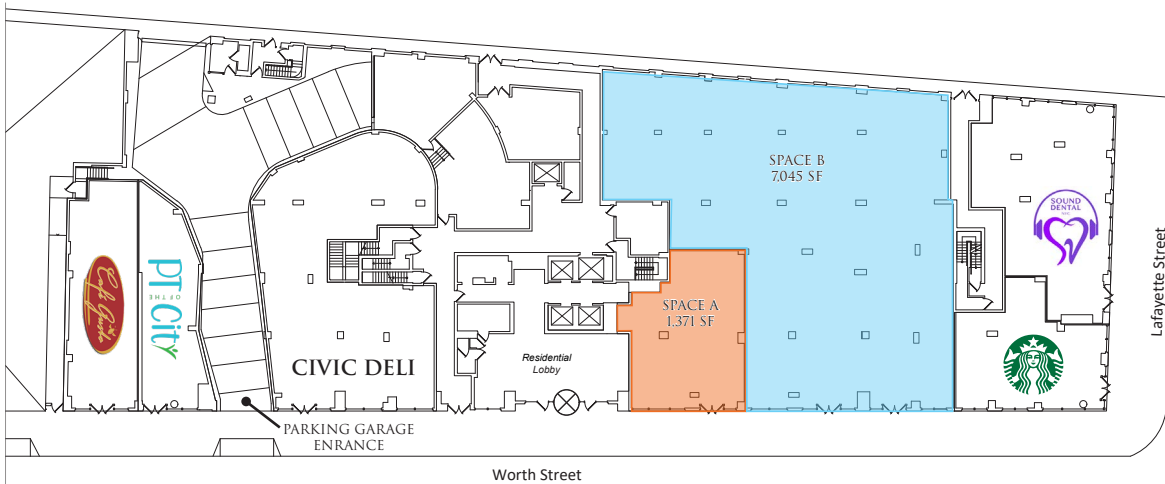
WORTH  
TRIBECA

SPACE A

SPACE B



## CURRENT CONFIGURATION



## LOCATION

NORTH BLOCK BETWEEN BROADWAY & LAFAYETTE STREET

## APPROXIMATE SIZE

<p>SPACE A</p> <p>SPACE B</p>	<p>GROUND FLOOR 1,371 SF</p> <p>STORAGE MEZZANINE 240 SF CAN BE COMBINED WITH SPACE B</p> <p>GROUND FLOOR 7,045 SF</p> <p>CAN BE COMBINED WITH SPACE A</p>
-------------------------------	--

## FRONTAGE

<p>SPACE A</p> <p>SPACE B</p>	<p>32'</p> <p>58'</p>
-------------------------------	-----------------------

## CEILING HEIGHTS

<p>SPACE A</p> <p>SPACE B</p>	<p>11'</p> <p>18'</p>
-------------------------------	-----------------------

## POSSESSION

<p>SPACE A</p> <p>SPACE B</p>	<p>IMMEDIATE</p> <p>IMMEDIATE</p>
-------------------------------	-----------------------------------

## SITE STATUS

<p>SPACE A</p> <p>SPACE B</p>	<p>PREVIOUSLY EVERYTABLE</p> <p>PREVIOUSLY DUANE READE</p>
-------------------------------	--

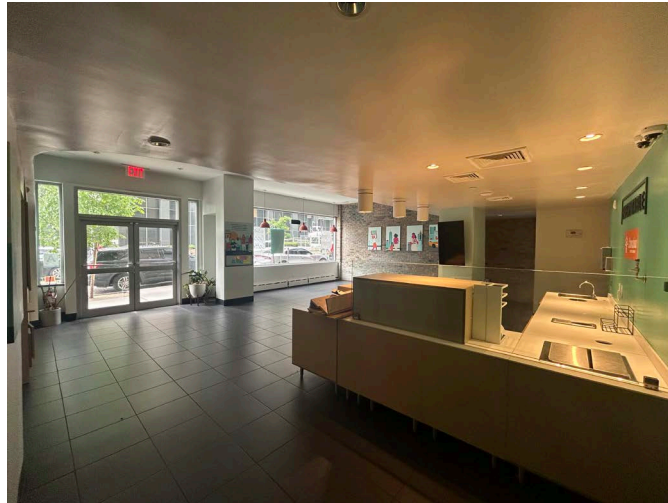
## NEIGHBORS

STARBUCKS, THINK COFFEE, 787 COFFEE CO, SOUND DENTAL, PT OF THE CITY, NY PRESBYTERIAN, CRUNCH FITNESS, SLT, DUNKIN', SOPHIE'S CUBAN CUISINE

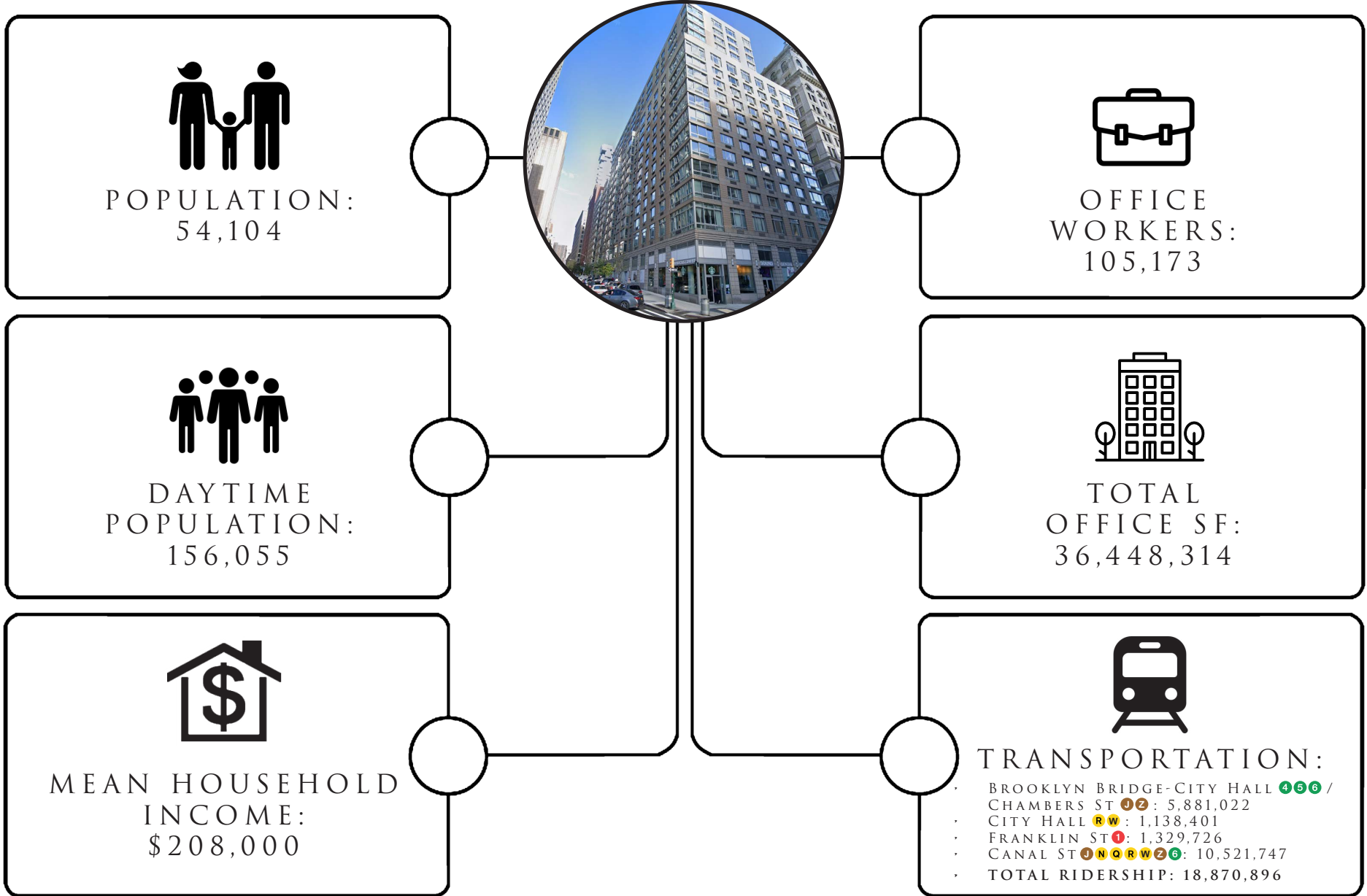
## HIGHLIGHTS

- AT THE BASE OF 331 UNIT LUXURY RESIDENTIAL BUILDING
- SURROUNDED BY A DENSE RESIDENTIAL AND OFFICE POPULATION
- MOST NON-CONFLICTING AND NON-VENTED FOOD USES CONSIDERED

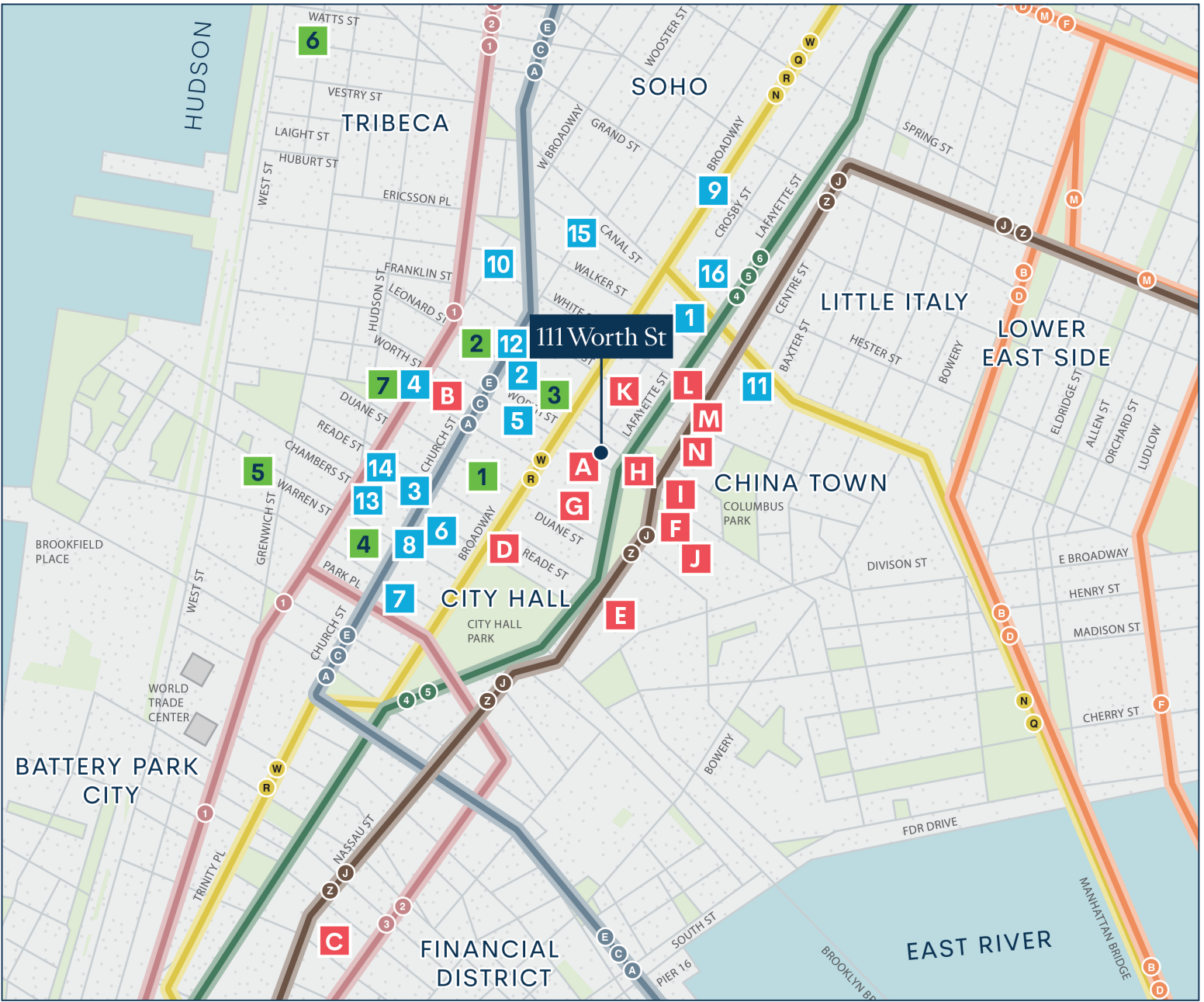
SPACE A:



AREA DEMOGRAPHICS







## DINING OPTIONS

1. Au Cheval
2. Shoji at 69 Leonard Street
3. Nish Nush
4. The Odeon
5. Atera
6. Racines NY
7. Gran Morsi
8. Takahachi Bakery
9. Le Botaniste
10. Frenchette
11. Two Hands
12. Sweetgreen
13. Serafina Tribeca
14. La Colombe Torrefaction
15. Le Coucou

## RESIDENTIAL

1. Tribeca Tower Luxury Apartments
2. 56 Leonard
3. 88 Leonard Apartments
4. Tribeca House
5. 89 Murray Luxury Apartments
6. 456 Washington St.
7. Mohawk Atelier

## MUNICIPAL BUILDINGS

- A. Jacob K. Javits Federal Building
- B. New York Child Support Enforcement
- C. Federal Hall
- D. Tweed Courthouse
- E. The David Dinkins Manhattan Municipal Building
- F. New York County Supreme Court
- G. US Court of International Trade
- H. Bureau of Statistics
- I. New York City Marriage Bureau
- J. US District Court
- K. New York County Family Court
- L. New York City Civil Court
- M. New York County Criminal Court
- N. City Clerk's Office



# 111

---

## WORTH

---

### T R I B E C A

FOR MORE INFORMATION,  
PLEASE CONTACT:

**ZACH NATHAN**

240.731.8333 | znathan@ksrny.com

**BRANDON BERGER**

646.236.8525 | bberger@ksrny.com

**MARC SITT**

917.757.8863 | msitt@ksrny.com

**MATT FOGEL**

203.962.5800 | mfogel@ksrny.com

**ROBIN DINKIN**

212.776.2284 | robin.dinkin@brookfieldproperties.com

**JOANNE MORABITO**

joanne.morabito@bpapartments.com

