

RETAIL STRIP

NWC OF HARPER & WHITTIER AVENUE



16443 Harper Avenue
Detroit, MI 48224



Retail Opportunity
980 ± SF

FOR LEASE

PROPERTY HIGHLIGHTS



Description

Retail space for lease at the corner of Harper & Whittier Ave. This property is shadow anchored by a Family Dollar Store. The center has adequate parking, excellent road visibility, & pylon sign panel available with multiple curb cuts along Harper & Whittier Ave.

Address

16443 Harper Avenue
Detroit, MI 48224

Features

- Excellent visibility
- Multiple curb cuts
- 19 parking spaces
- Pylon panel available
- Built in 2005

Asking Rent

\$25/SF plus NNN

Traffic Counts

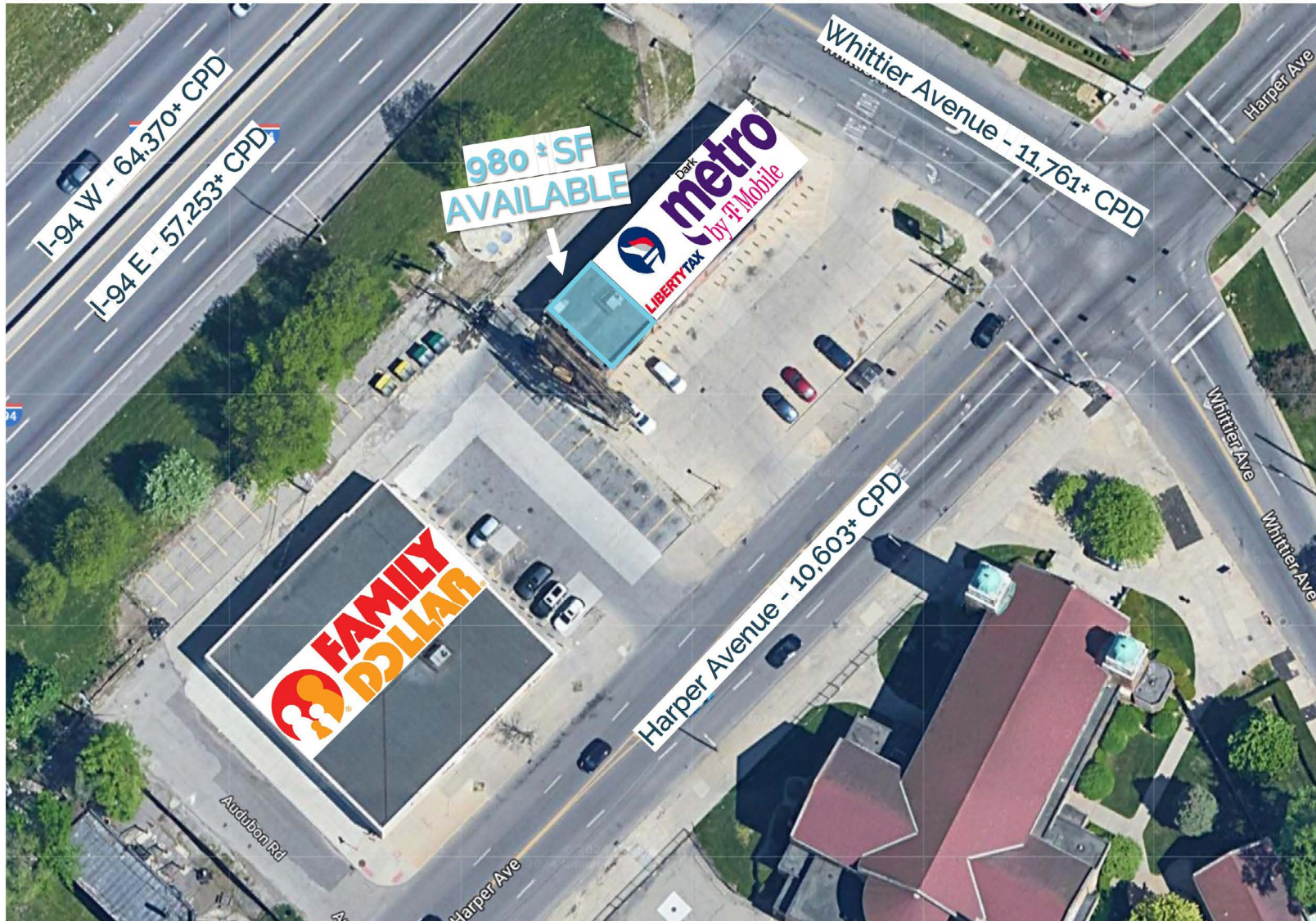
Harper Ave - 10,921+ cpd
Whittier Ave - 11,761+ cpd
I-94 E - 57,253+ cpd
I-94 W - 64,370+ cpd

Demographics

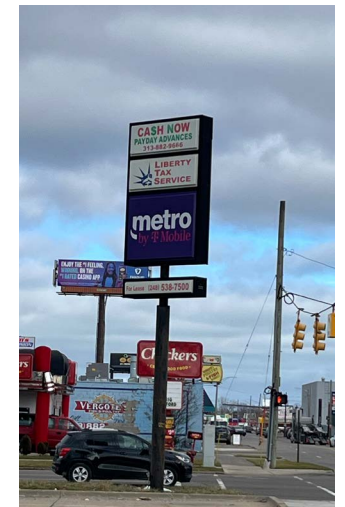
	1 MILE	3 MILES	5 MILES
POPULATION:	24,400	141,493	275,579
HOUSEHOLDS:	8,372	51,465	106,060
AVG. HOUSEHOLD INCOME:	\$58,734	\$104,879	\$94,515
DAYTIME POPULATION:	11,255	77,462	163,902

The information contained herein has been obtained through sources deemed reliable by On Q Commercial Real Estate but cannot be guaranteed for its accuracy. We recommend to the buyer or lessee that any information, which is of special interest, should be obtained through independent verification. ALL MEASUREMENTS ARE APPROXIMATE.

MICRO AERIAL



The information contained herein has been obtained through sources deemed reliable by On Q Commercial Real Estate but cannot be guaranteed for its accuracy. We recommend to the buyer or lessee that any information, which is of special interest, should be obtained through independent verification. ALL MEASUREMENTS ARE APPROXIMATE.



PHOTOS
RETAIL STRIP

The information contained herein has been obtained through sources deemed reliable by On Q Commercial Real Estate but cannot be guaranteed for its accuracy. We recommend to the buyer or lessee that any information, which is of special interest, should be obtained through independent verification. ALL MEASUREMENTS ARE APPROXIMATE.



OnQ
COMMERCIAL
REAL ESTATE

JOE QONJA

Listing Contact

C: (248) 977-7799

O: (248) 712-3300

E: joe@onqcre.com

LEO ALLUS

Listing Contact

C: (248) 321-3325

O: (248) 712-3300

E: leo@onqcre.com

100 W. Long Lake Rd. Suite 122 Bloomfield Hills, MI 48304

www.onqcre.com

The information contained herein has been obtained through sources deemed reliable by On Q Commercial Real Estate but cannot be guaranteed for its accuracy. We recommend to the buyer or lessee that any information, which is of special interest, should be obtained through independent verification. ALL MEASUREMENTS ARE APPROXIMATE.