

2930 W. 20th Ave.

Denver, CO 80204

FOR LEASE



1,728 SF FLEX SPACE FOR LEASE | JEFFERSON PARK

Property Highlights

- Located in the vibrant Jefferson Park neighborhood, a short distance to Highlands, Sloan's Lake, and Downtown Denver, offering excellent accessibility and neighborhood character.
- Excellent regional access via major corridors including I-25, 6th Ave, and 20th Ave, improving commute and logistics.
- Flexible layout supporting a range of tenant uses
- Strong neighborhood amenities: nearby cafes, breweries, retail & lifestyle destinations
- Close to residential density and transit, enhancing workforce access

Property Facts

Availability	1,728 SF
Building Size	6,895 SF
Drive In Door	One (1) 8' x 10'
Parking	Contact Broker
Zoning	C-MX-5
NNN Estimate	\$3.64/SF

Lease Rate: \$13.00/SF NNN

NAI Shames Makovsky

Solomon Stark

303 565 3032

sstark@shamesmakovsky.com

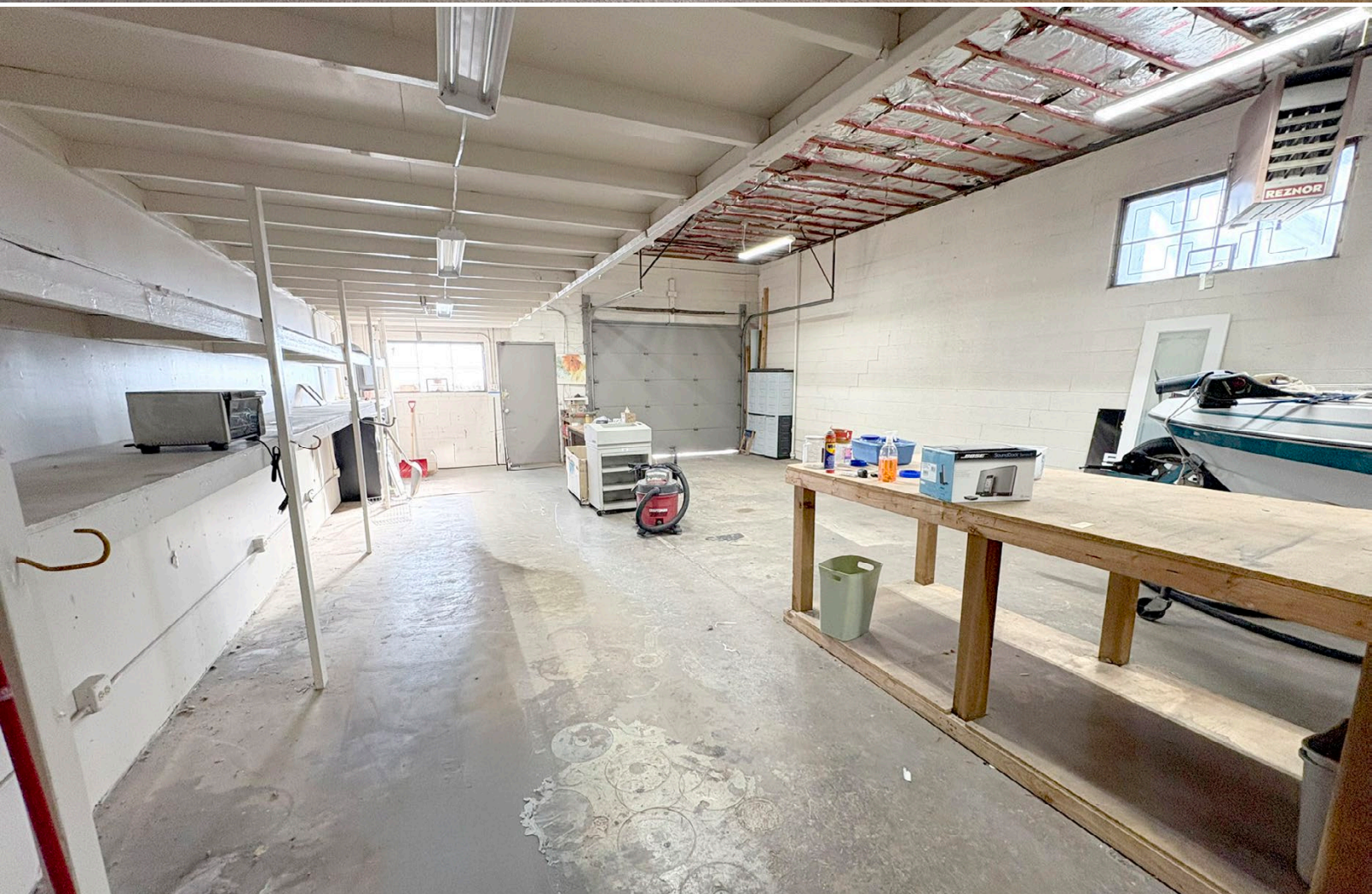
Sandy Feld

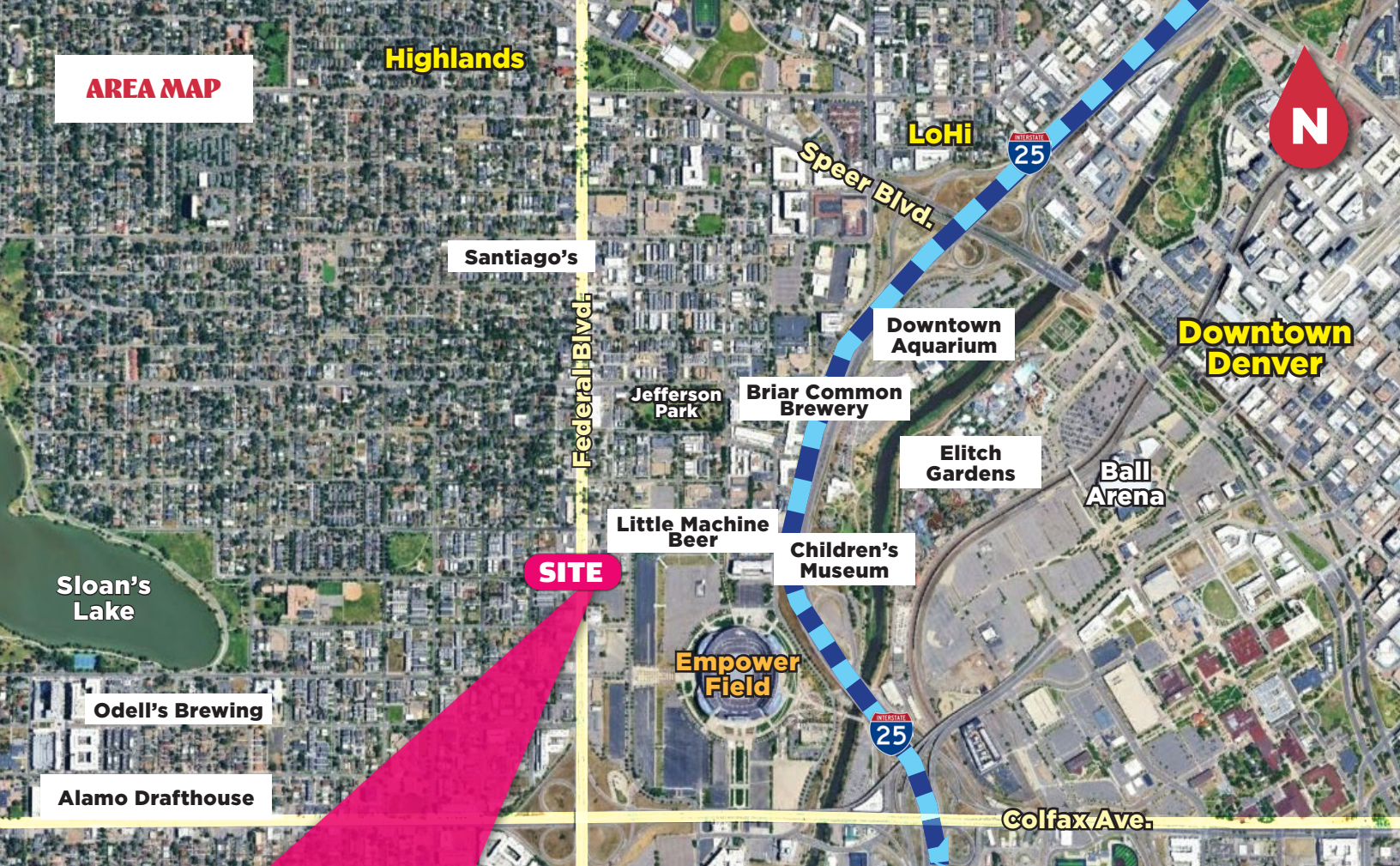
303 565.3024

sfeld@shamesmakovsky.com



PHOTOS





Demographics

	1 MI	3 MI	5 MI
HOUSEHOLDS	12,067	118,978	224,084
5 YEAR HH PROJECTION	12,503	121,267	226,752
AVG. HH INCOME	\$121,494	\$107,632	\$107,446
MEDIAN AGE	34	35.3	36.5
AREA DAYTIME EMPLOYEES	13,032	218,934	370,553

NAI Shames Makovsky

Solomon Stark

303 565 3032

sstark@shamesmakovsky.com

Sandy Feld

303 565.3024

sfeld@shamesmakovsky.com