

FOR LEASE

# 15,840 SQUARE FEET

2835 Pellissier Place, City of Industry, CA



**CROSSROADS  
Industrial PARK**

**Freeway Visible**



## BUILDING FEATURES

Land Area: .77 Acres

Fenced Yard

Office: 2,000 SF

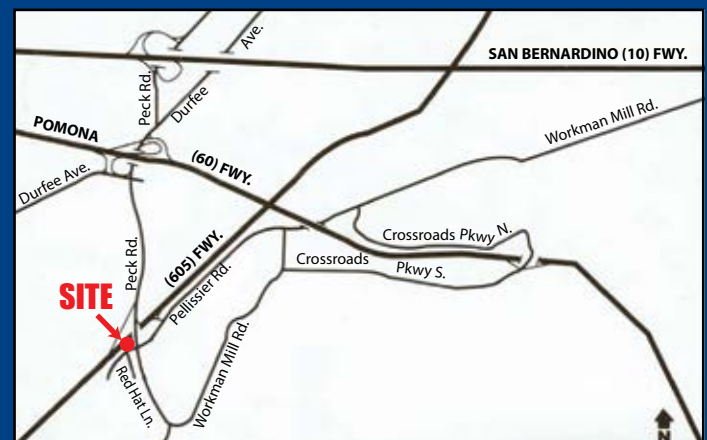
Clear Height: 16'

Power: 200 Amp, 277/480 Volts, 3 Phase

Loading: 2 Dock High Doors, 1 Ground Level Ramp

Auto Parking: 32 spaces

Excellent Freeway Access to San Gabriel (605) & Pomona (60) Freeways



For further information, contact:



**Terry Baker**  
R.E. License #00711593 (CA)  
562.948.4341  
tbaker@majesticrealty.com

FOR LEASE

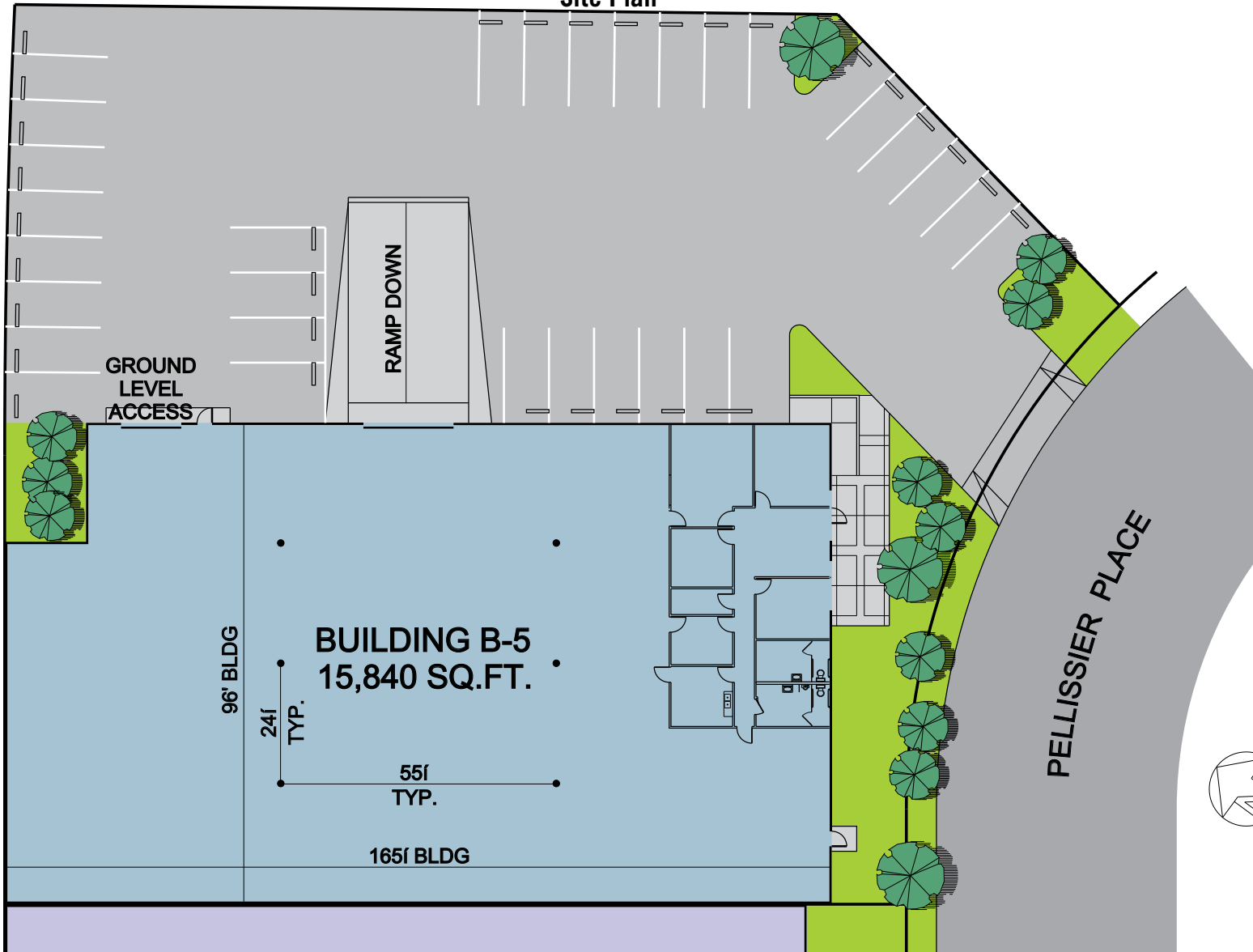
# 15,840 SQUARE FEET

2835 Pellissier Place, City of Industry, CA



**CROSSROADS  
Industrial PARK**

Site Plan



For further information, contact:



**Terry Baker**  
R.E. License #00711593 (CA)  
562.948.4341  
tbaker@majesticrealty.com