

ALL PROPERTIES ARE OWNER MANAGED AND  
STRATEGICALLY LOCATED MINUTES FROM A MAJOR INTERSTATE  
IN THE EAST BAY AND CENTRAL VALLEY.

**Right Space. Best Place.**

[www.cranbrookgroup.com](http://www.cranbrookgroup.com)

## PORT PLAZA BUSINESS CENTER

[3950 - 3960 Industrial Boulevard, West Sacramento, CA 95691](#)

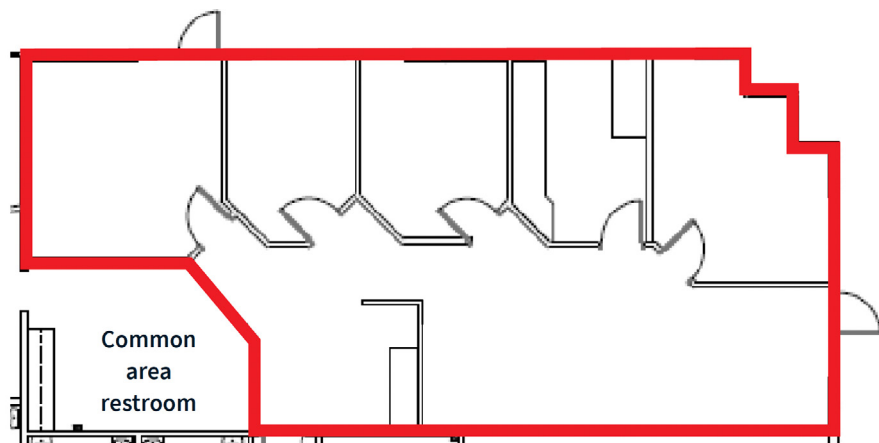


### SEE & LEARN MORE ...

Go to [cranbrookgroup.com](http://cranbrookgroup.com) to view more photos and get more information about Port Plaza Business Center and our company!

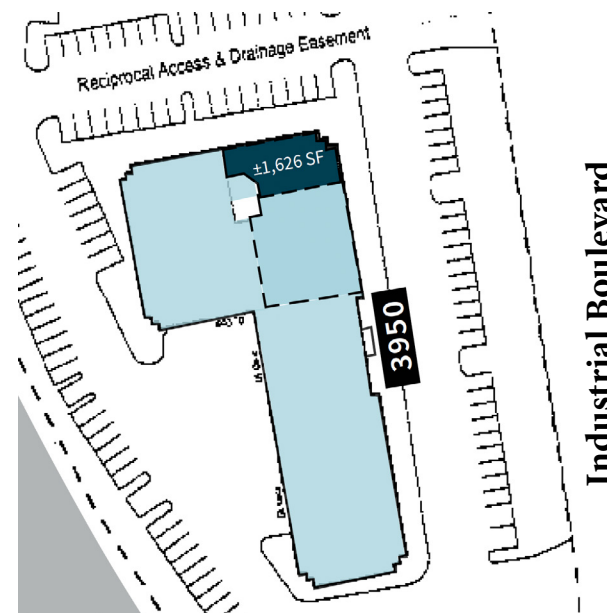
## SUITE 3950-500

± 1,626 RENTABLE SQUARE FEET



## FLOOR KEY PLAN

AVAILABLE SUITE IN BLUE BELOW



The information contained herein is based on reliable data, measurements and calculations. We have no reason to doubt its accuracy, but we do not guarantee it. All information should be verified prior to purchase or lease.

For more information, please contact:



**Mike Luca**

Senior Managing Director, JLL  
C: (916) 214-0466  
[mike.luca@jll.com](mailto:mike.luca@jll.com)  
DRE #01447904

**Dominic Smith**

Senior Associate, JLL  
C: (916) 995-9396  
[dominic.smith@jll.com](mailto:dominic.smith@jll.com)  
DRE #02106714



**Chris Wight**

Director of Brokerage | Senior Property Manager  
O: (209) 549-4960 x 117 | C: (415) 350-1430  
[cwight@cranbrookgroup.com](mailto:cwight@cranbrookgroup.com)  
DRE #00935049