



BOCA RATON'S FINEST OFFICE

FOR LEASE

PENINSULA PLAZA

2424 N FEDERAL HWY | BOCA RATON, FL

Brady Titcomb
+1 954 653 3222
brady.titcomb@jll.com

©2025 Jones Lang LaSalle Brokerage, Inc., a licensed real estate broker. All rights reserved





Fitness Center



On-Site Cafe



Jogging Paths



Conference Facility

Building highlights

Expand or relocate your business to the newly renovated Peninsula Plaza, a four-story multi-tenant office building, located on North Federal Highway in East Boca Raton, FL. The Class A property, nestled between Yamato Road and Glades Road, lies just minutes from I-95 and Mizner Park. Your employees and clients alike will enjoy being within walking distance to restaurants and shopping.

What's more, the property offers a new and modern conference facility, on-site café, property management office, and well-appointed fitness center with lockers and showers. Recent renovations include a refreshed lobby with a sundrenched atrium, complete elevator modernization and collaborative common areas. Making for energizing midday breaks, Peninsula Plaza backs up to an expansive jogging path with water views.

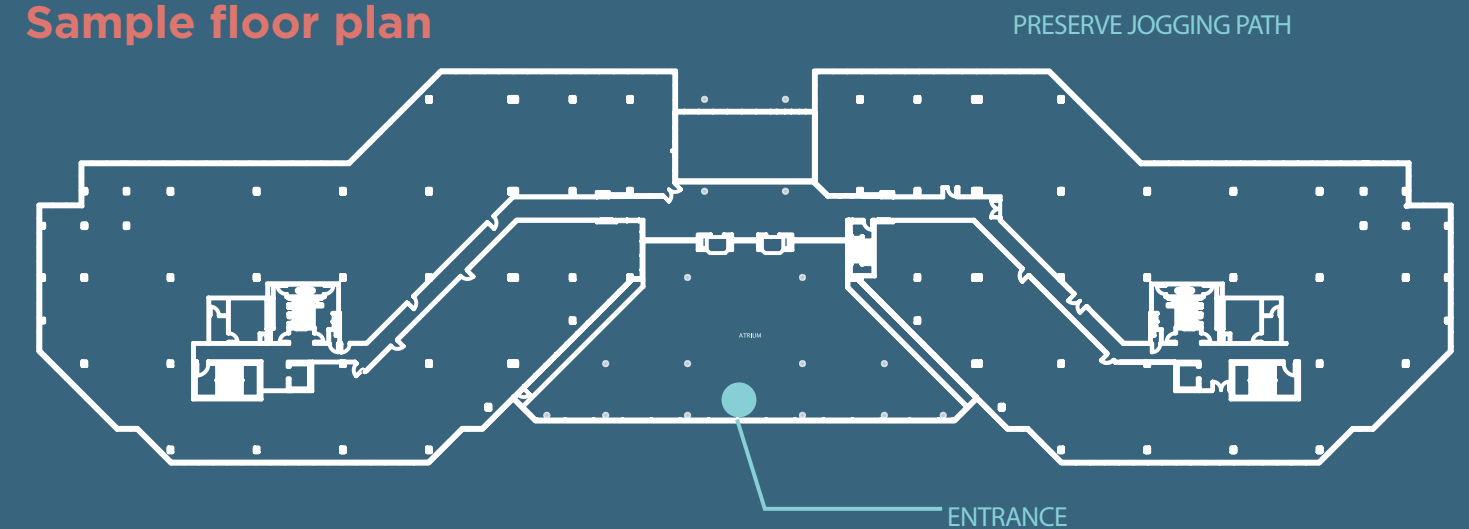


In the area

- Dozens of restaurants nearby including, Chipotle, Subway, Blaze Pizza and many more.
- Multiple bank options located on Federal Highway
- Conveniently located minutes from Mizner Park and Royal Palm Plaza
- Jogging path accessible behind the property
- Approximately ten minutes to I-95, Boca Town Center and Boca Executive Airport



Sample floor plan



Fitness Center



On-Site Cafe



Jogging Paths

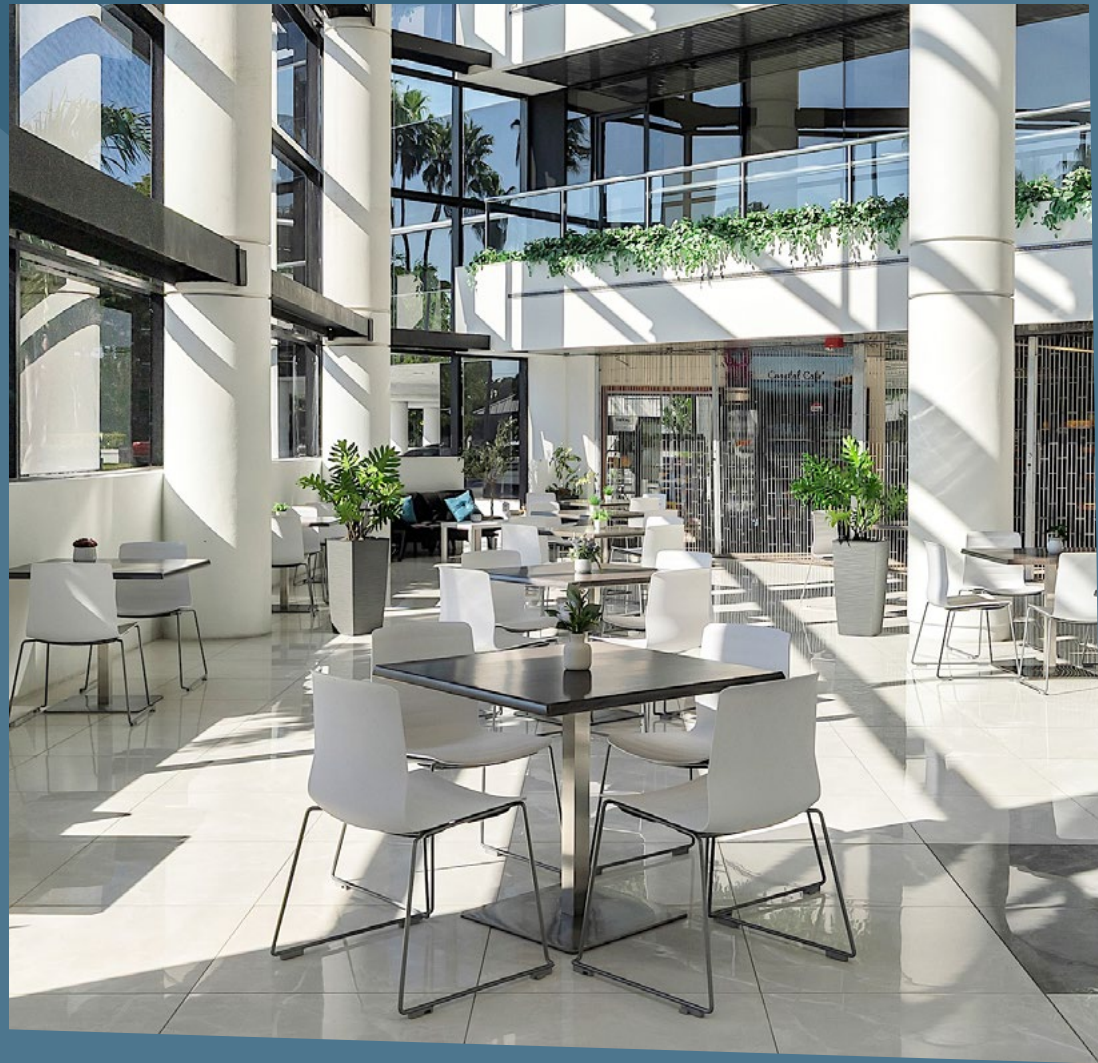


Conference Facility



4:0:1,000 parking ratio
1/3 covered parking

*Please inquire for lease rate and availabilities

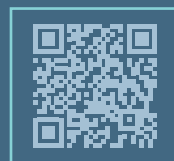






2424
PENINSULA
PLAZA

2424 N Federal Hwy
Boca Raton, FL
2424nfederalhwy.com



Brady Titcomb
+1 954 653 3222
brady.titcomb@jll.com