

FOR LEASE
INDUSTRIAL PROPERTY



45 INDUSTRIAL PARK ROAD

45 INDUSTRIAL PARK ROAD, HINGHAM, MA 02043

For More Information

DAVE ELLIS, SIOR

781.919.0800 X701

dave@ellisrealtyadvisors.com

BILL KINGDON, SIOR

603.560.2710

bill@ellisrealtyadvisors.com



45 INDUSTRIAL PARK ROAD



PROPERTY DESCRIPTION

Now available, prime 1920 square foot office suite in South Shore Park. Conveniently located at exit 15 off Route 3, this building was recently given a full face-lift. Newly built out flex space with glass overhead door for loading. Formerly Weston Graphics, a commercial printing operation, the space is great for flexible office or showroom/warehouse.

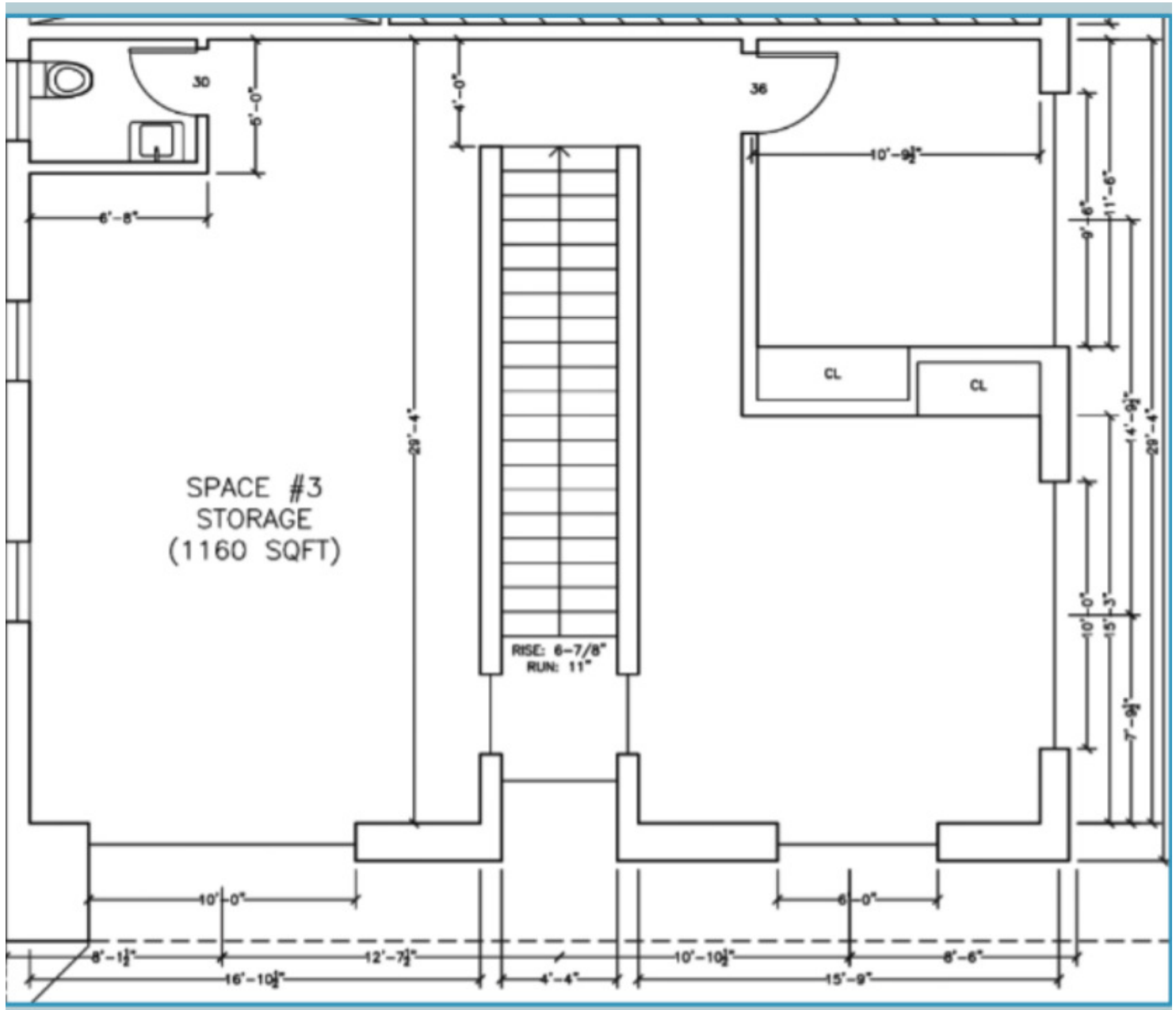
PROPERTY HIGHLIGHTS

OFFERING SUMMARY

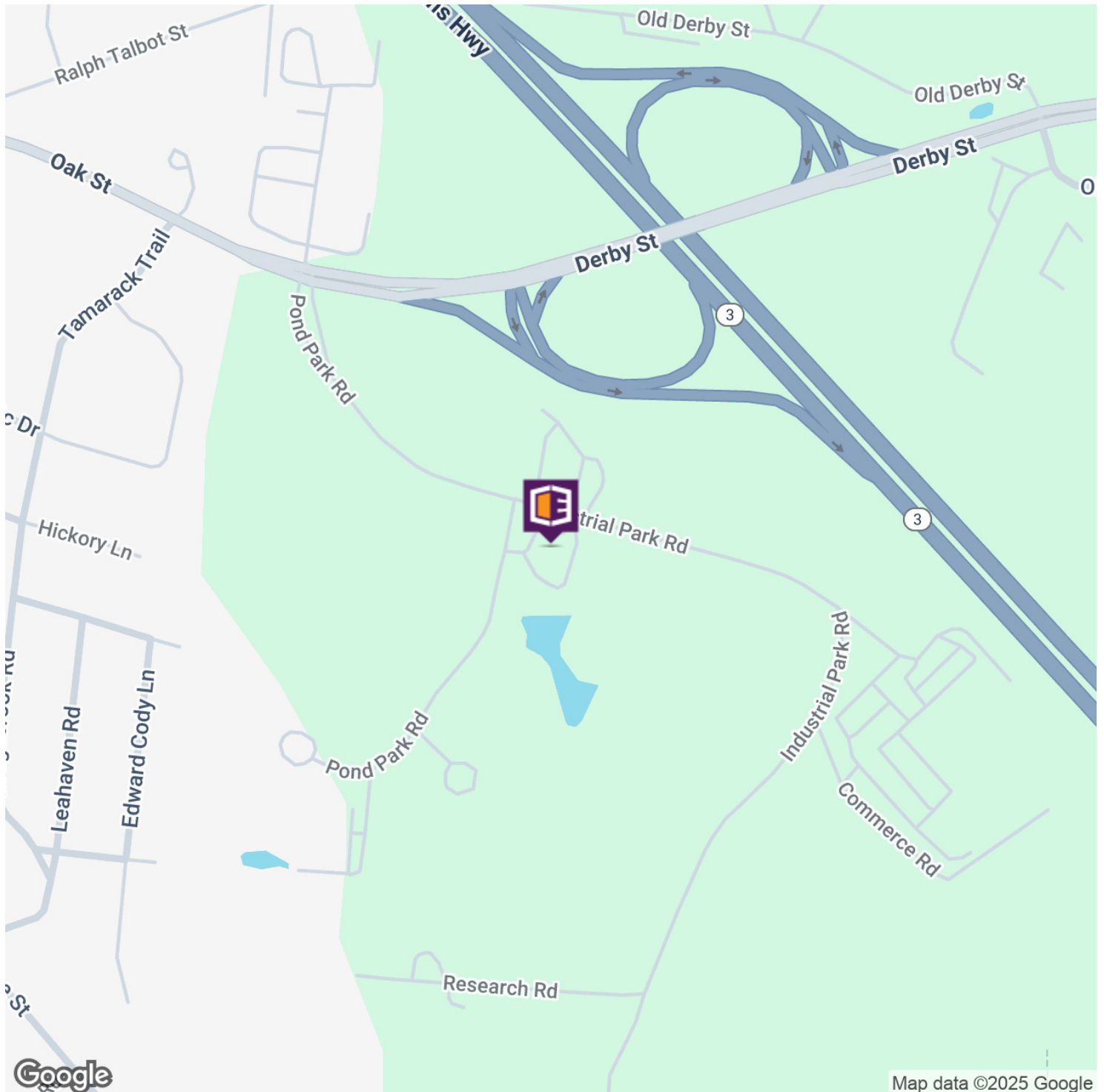
Lease Rate:	\$3,500.00 per month (NNN)
Available SF:	1,920 SF
Lot Size:	
Building Size:	13,000 SF

DEMOGRAPHICS	1 MILE	5 MILES	10 MILES
Total Households	1,528	52,600	187,931
Total Population	3,695	132,846	482,736
Average HH Income	\$98,659	\$93,540	\$84,225

45 INDUSTRIAL PARK ROAD

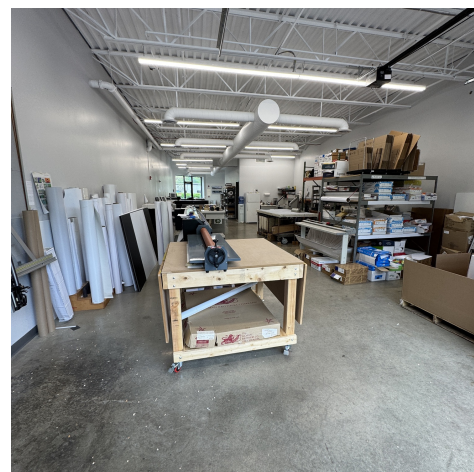


45 INDUSTRIAL PARK ROAD



ADDITIONAL PHOTOS

45 INDUSTRIAL PARK ROAD



DAVE ELLIS, SIOR

781.919.0800 x701
dave@ellisrealtyadvisors.com

BILL KINGDON, SIOR

603.560.2710
bill@ellisrealtyadvisors.com