



**404 E BALTIMORE STREET
BALTIMORE, MARYLAND 21202**

15,088 SF Full Building Available



JONATHAN BARON

jonathan.baron@thomas-park.com

www.thomas-park.com

410-280-0220

404 E BALTIMORE ST BALTIMORE, MD 21202

15,088 SF Full Building Available

Property Facts

Building Type	Retail/Office
Building Height	4 Stories + Rooftop & Basement
Building Size	15,088 SF
Retail Rent	\$15.00 /SF/YR + NNN

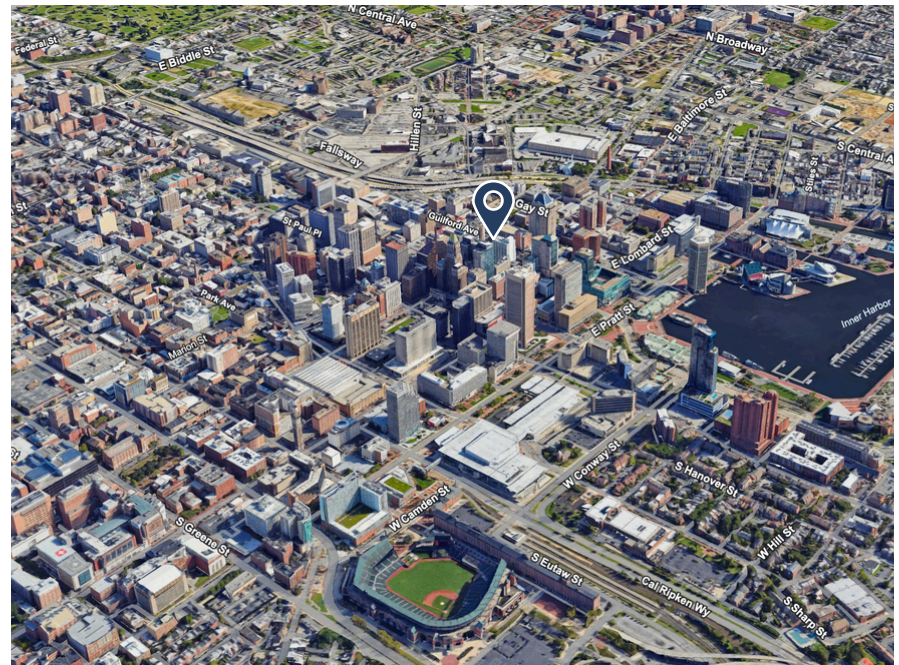
Property Overview

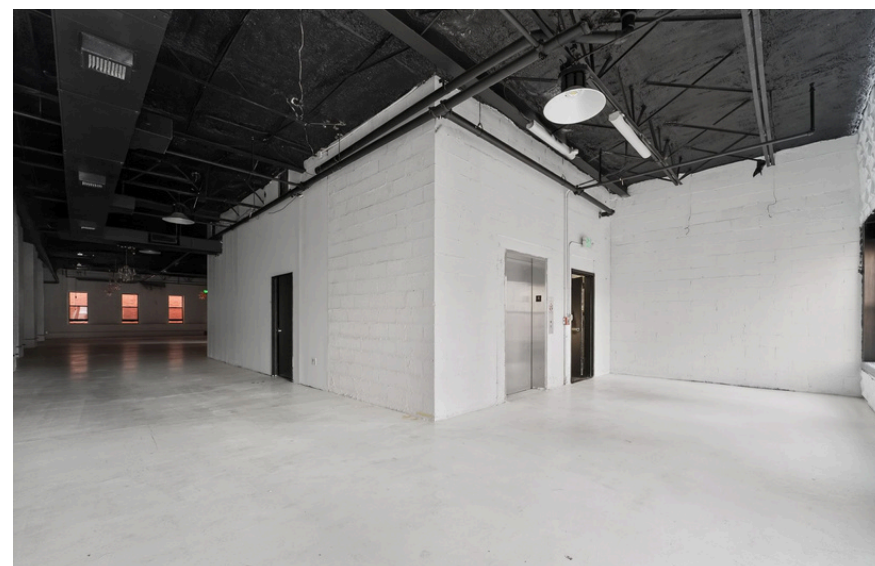
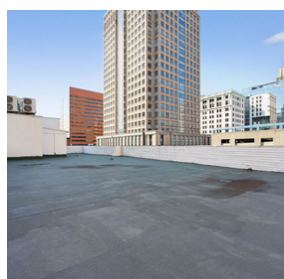
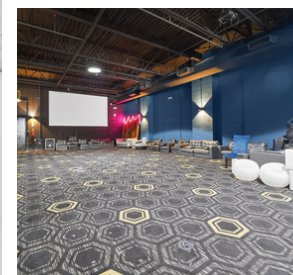
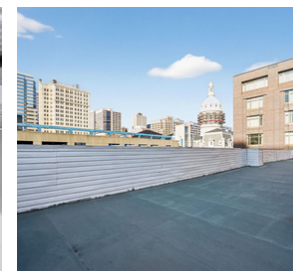
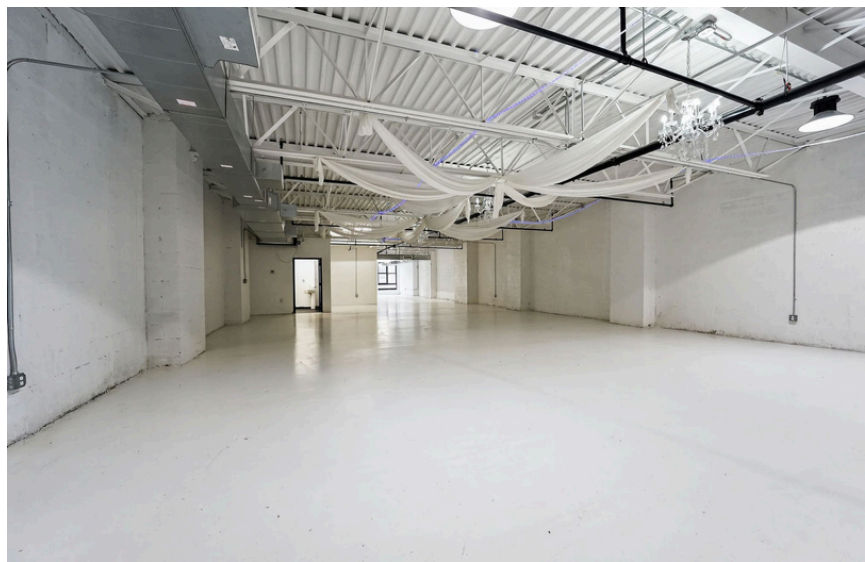
404 E. Baltimore Street is ideally positioned in the heart of Downtown Baltimore's Central Business District, just one block from City Hall and within a short walk of the Inner Harbor. The property offers exceptional proximity to Baltimore's primary government, legal, and business institutions, making it a strategic location for a corporate headquarters, nonprofit organization, or government agency, or a restaurant/nightclub. With strong transit access and walkability to dining, retail, and waterfront amenities, 404 E. Baltimore Street provides a highly functional and visible downtown presence.



JONATHAN BARON

jonathan.baron@thomas-park.com
410-280-0220





404 E BALTIMORE STREET BALTIMORE, MARYLAND 21202

15,088 SF Full Building Available



JONATHAN BARON

jonathan.baron@thomas-park.com

www.thomas-park.com

410-280-0220



404 E BALTIMORE ST BALTIMORE, MD 21202

15,088 SF Entire Office Building Available



JONATHAN BARON

jonathan.baron@thomas-park.com

www.thomas-park.com

410-280-0220



YOUR COMMERCIAL REAL ESTATE PARTNER

Thomas Park is a full-service commercial real estate firm offering alternative investment strategies and third-party commercial real estate services.



JONATHAN BARON

jonathan.baron@thomas-park.com

www.thomas-park.com

410-280-0220



THOMAS PARK COMMERCIAL

Thomas Park Commercial specializes in leasing and investment brokerage across all commercial asset classes throughout Maryland.



THOMAS PARK INVESTMENTS

TPI is one of the fastest growing private equity real estate investment firms on the East Coast focused exclusively on healthcare real estate.



THOMAS PARK MANAGEMENT

TPM is a best in class property management firm with a 30+ year track record in the commercial real estate industry.



THOMAS PARK DESIGN

TPD is an innovative interior design firm specializing in healthcare, medical office, commercial office, and retail.



THOMAS PARK CONSTRUCTION

TPC focuses on commercial construction within the healthcare, retail, office and industrial sectors.