



FOR LEASE

Industrial Building Available

2901 Heartland Drive
Liberty, Missouri

NEWMARK
ZIMMER

THE
RMR
GROUP

2901 HEARTLAND DRIVE, LIBERTY, MISSOURI

Property Highlights

Use:	Industrial manufacturing or logistics
Building Size:	96,687 (±) sf, with pad ready expansion capabilities
Ownership:	Institutionally owned and managed
Loading:	4 drive-in doors, 30 dock-high doors (cross-dock)
Ceiling Height:	24' minimum
Office Size:	6,120 (±) sf office area
Parcel Size:	19 acre site
Outdoor Storage:	Paved rear truck court may accommodate storage
Parking:	202 auto parking stalls, multiple trailer storage positions
Power:	2,000 amps
Lighting:	LED
Sprinkler:	Wet
Year Built:	1997
Lease Rate:	\$4.95/sf, NNN



CONTACT

Mark C. Long, CRE, SIOR, CCIM, LEED

President and Chief Executive Officer

t 816-512-1011

mlong@ngzimmer.com

nmrkzimmer.com

John F. Hassler, SIOR

Senior Managing Director

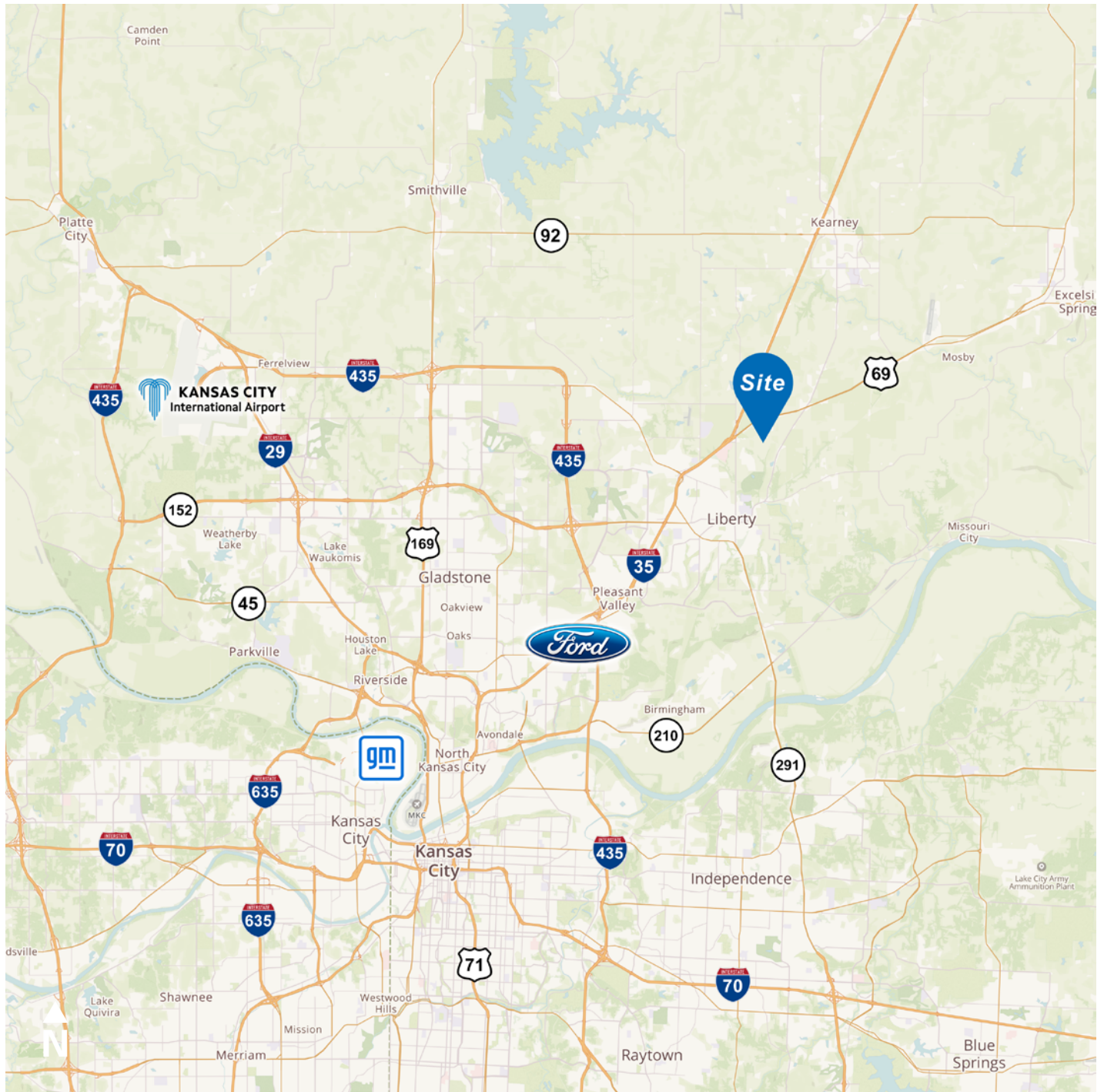
t 816-268-4208

jhassler@ngzimmer.com

NEWMARK
ZIMMER

THE
RMR
GROUP

2901 HEARTLAND DRIVE, LIBERTY, MISSOURI



CONTACT

Mark C. Long, CRE, SIOR, CCIM, LEED

President and Chief Executive Officer

t 816-512-1011

mlong@ngzimmer.com

nmrkzimmer.com

John F. Hassler, SIOR

Senior Managing Director

t 816-268-4208

jhassler@ngzimmer.com

NEWMARK
ZIMMER

THE
RMR
GROUP

2901 HEARTLAND DRIVE, LIBERTY, MISSOURI



CONTACT

Mark C. Long, CRE, SIOR, CCIM, LEED

President and Chief Executive Officer

t 816-512-1011

mlong@ngzimmer.com

nmrkzimmer.com

John F. Hassler, SIOR

Senior Managing Director

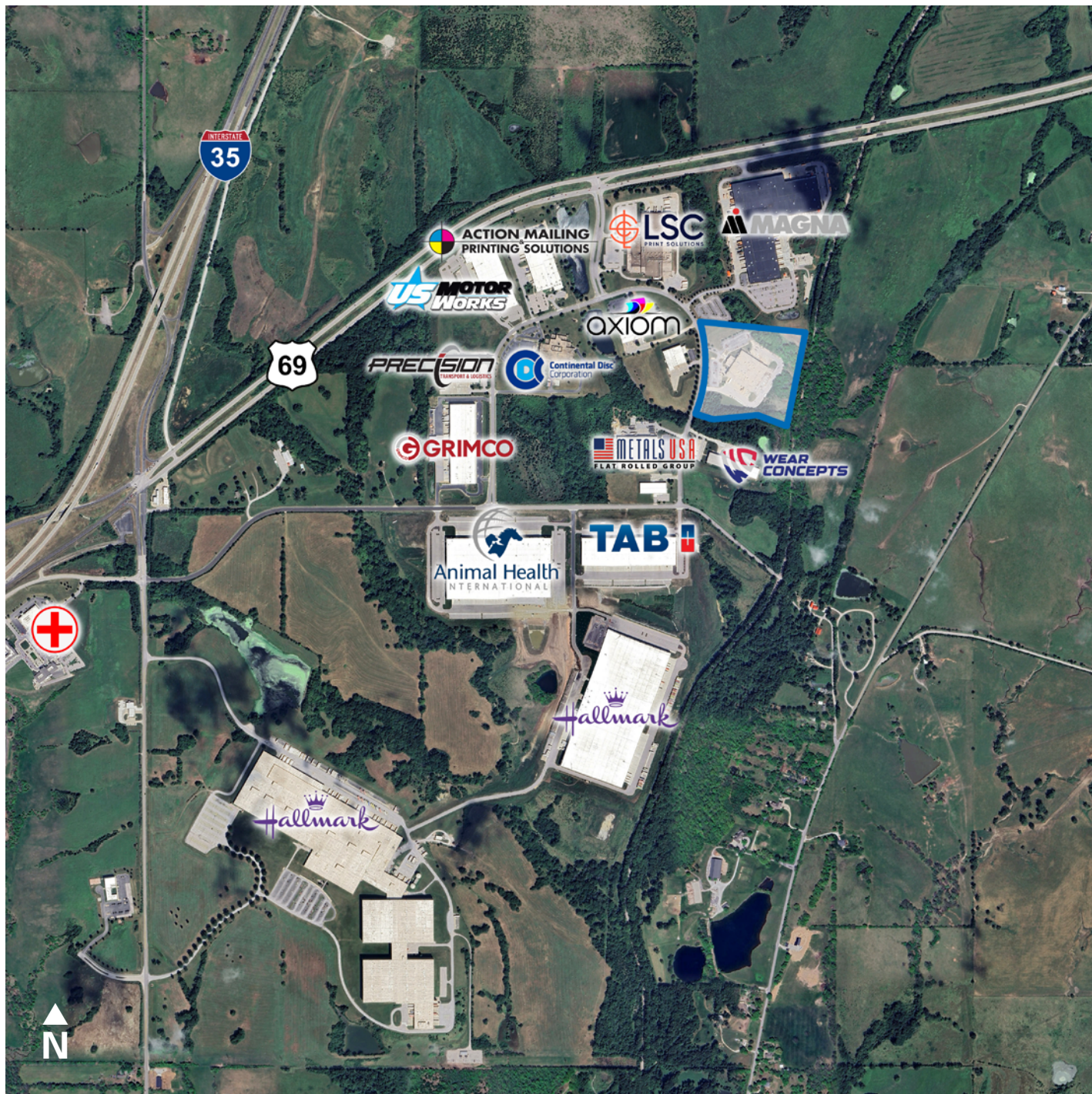
t 816-268-4208

jhassler@ngzimmer.com

NEWMARK
ZIMMER

THE
RMR
GROUP

2901 HEARTLAND DRIVE, LIBERTY, MISSOURI



CONTACT

Mark C. Long, CRE, SIOR, CCIM, LEED

President and Chief Executive Officer

t 816-512-1011

mlong@ngzimmer.com

nmrkzimmer.com

John F. Hassler, SIOR

Senior Managing Director

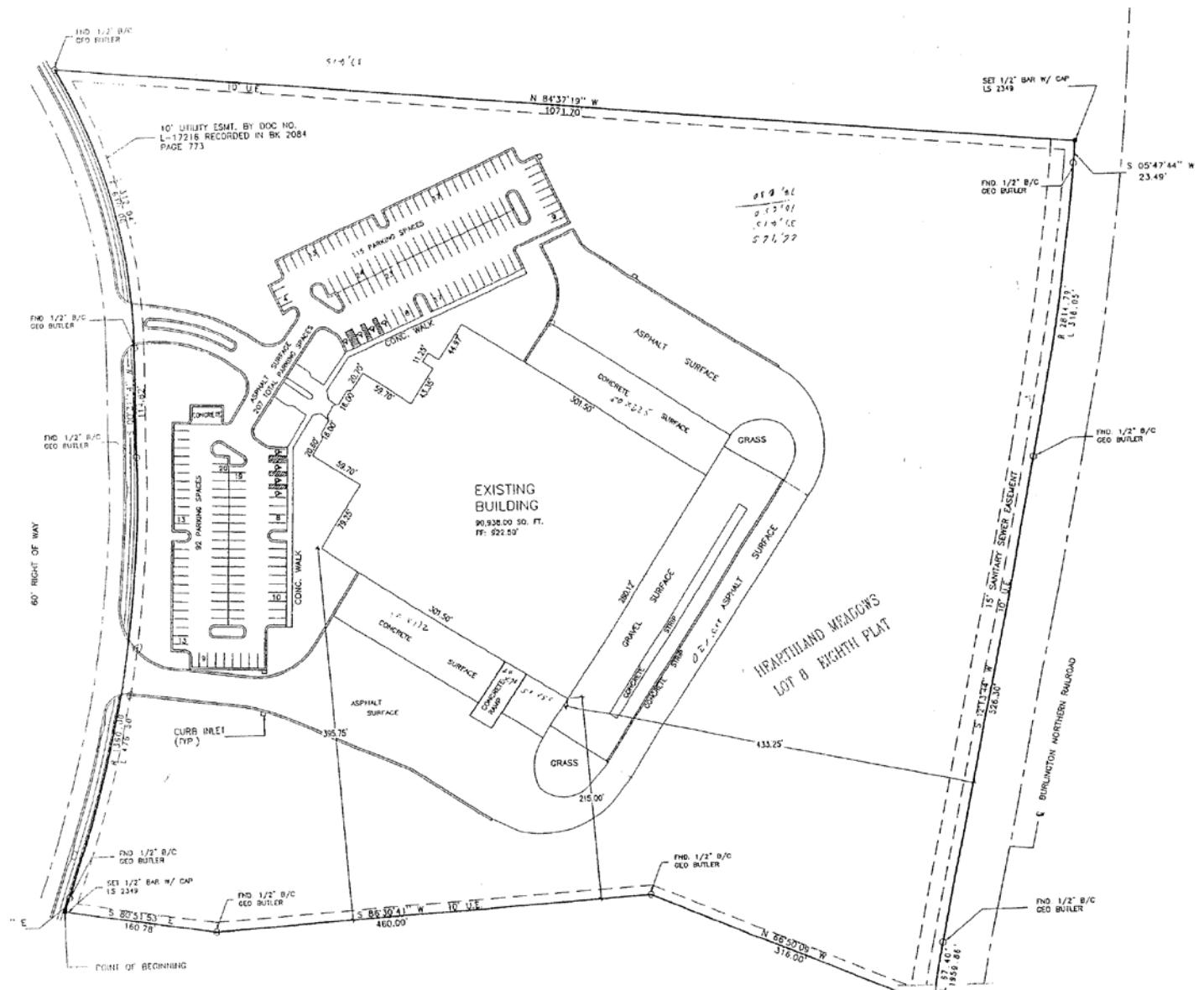
t 816-268-4208

jhassler@ngzimmer.com

NEWMARK
ZIMMER

THE
RMR
GROUP

Site Plan



THE
RMR
GROUP

2901 HEARTLAND DRIVE, LIBERTY, MISSOURI



CONTACT

Mark C. Long, CRE, SIOR, CCIM, LEED

President and Chief Executive Officer

t 816-512-1011

m-long@ngzimmer.com

nmrkzimmer.com

John F. Hassler, SIOR

Senior Managing Director

t 816-268-4208

jhassler@ngzimmer.com

NEWMARK
ZIMMER

THE
RMR
GROUP