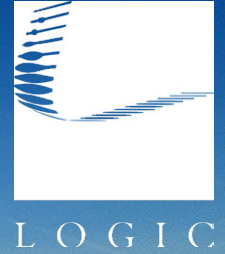


For Lease

Southtowne Crossing



47 - 189 Damonte Ranch Pkwy.
Reno, NV 89521

Ian Cochran, CCIM
Partner
775.225.0826
icochran@logicCRE.com
B.0145434.LLC

Greg Ruzzine, CCIM
Partner
775.450.5779
gruzzine@logicCRE.com
BS.0145435

Point of contact

Grace Keating
Associate
775.870.7806
gkeating@logicCRE.com
S.0198962

Listing Snapshot



\$2.25 - \$3.00 PSF NNN
Lease Rate



± 1,200 - 4,464 SF
Available Square Footage



\$0.75 PSF
Lease Expense

Property Highlights

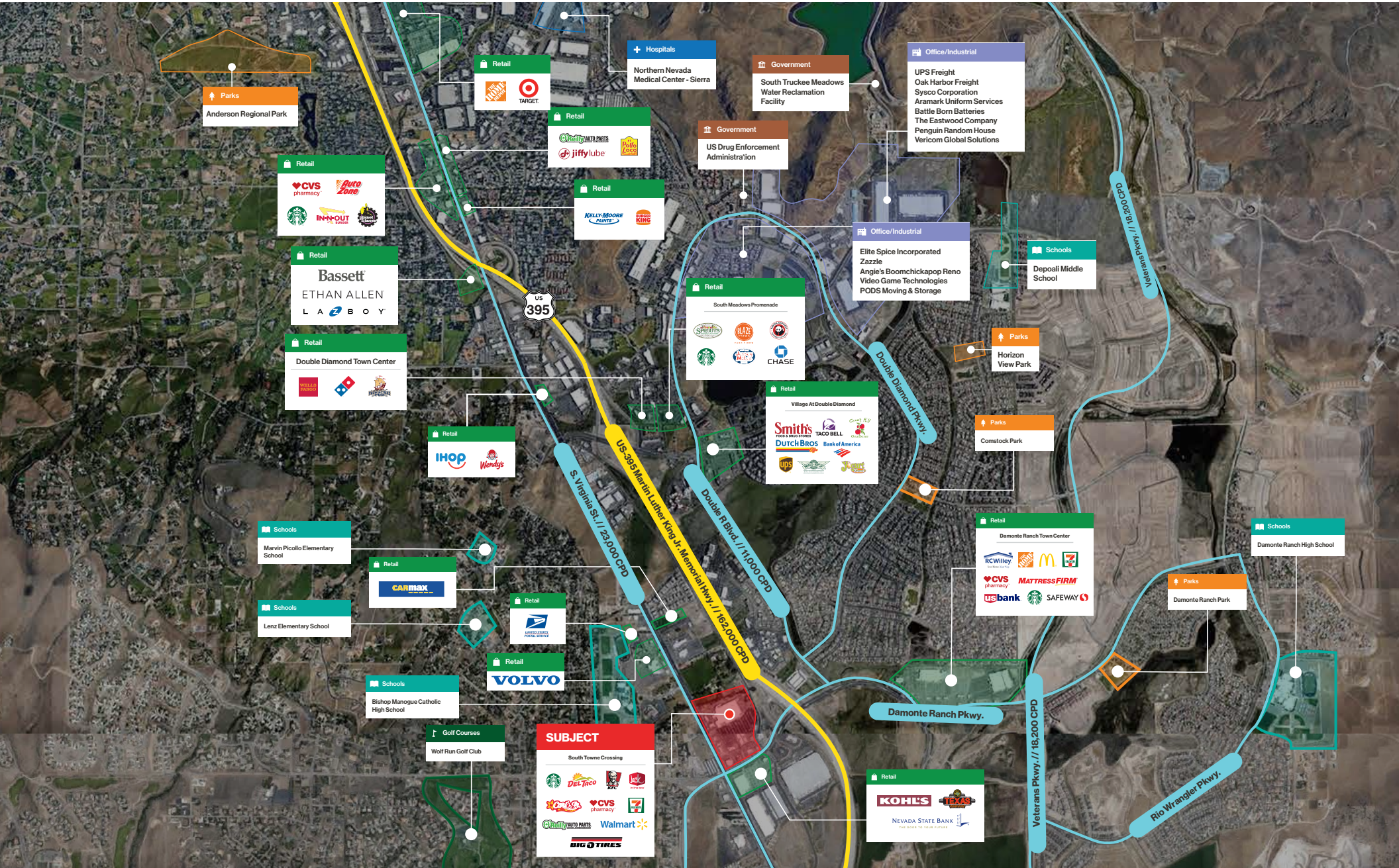
- Rare opportunity in Class-A Damonte Ranch shopping center
- Increased population in the area with expanding growth in the South Meadows submarket
- Average household income over \$163,707 within a 1-mile radius
- Walmart-anchored shopping center with multiple national tenants including CVS Pharmacy, Starbucks, Del Taco, AT&T, Round Table Pizza, State Farm, Verizon, Big O Tires, and Sprint
- Traffic counts along Damonte Ranch Pkwy. over 23,000 CPD
- Professionally managed shopping center with high interest and historically low vacancy

Demographics

	1-mile	3-mile	5-mile
2025 Population	7,871	64,525	96,195
2025 Average Household Income	\$163,707	\$166,349	\$155,135
2025 Total Households	3,625	26,250	39,665



[Click for a Virtual Tour](#)

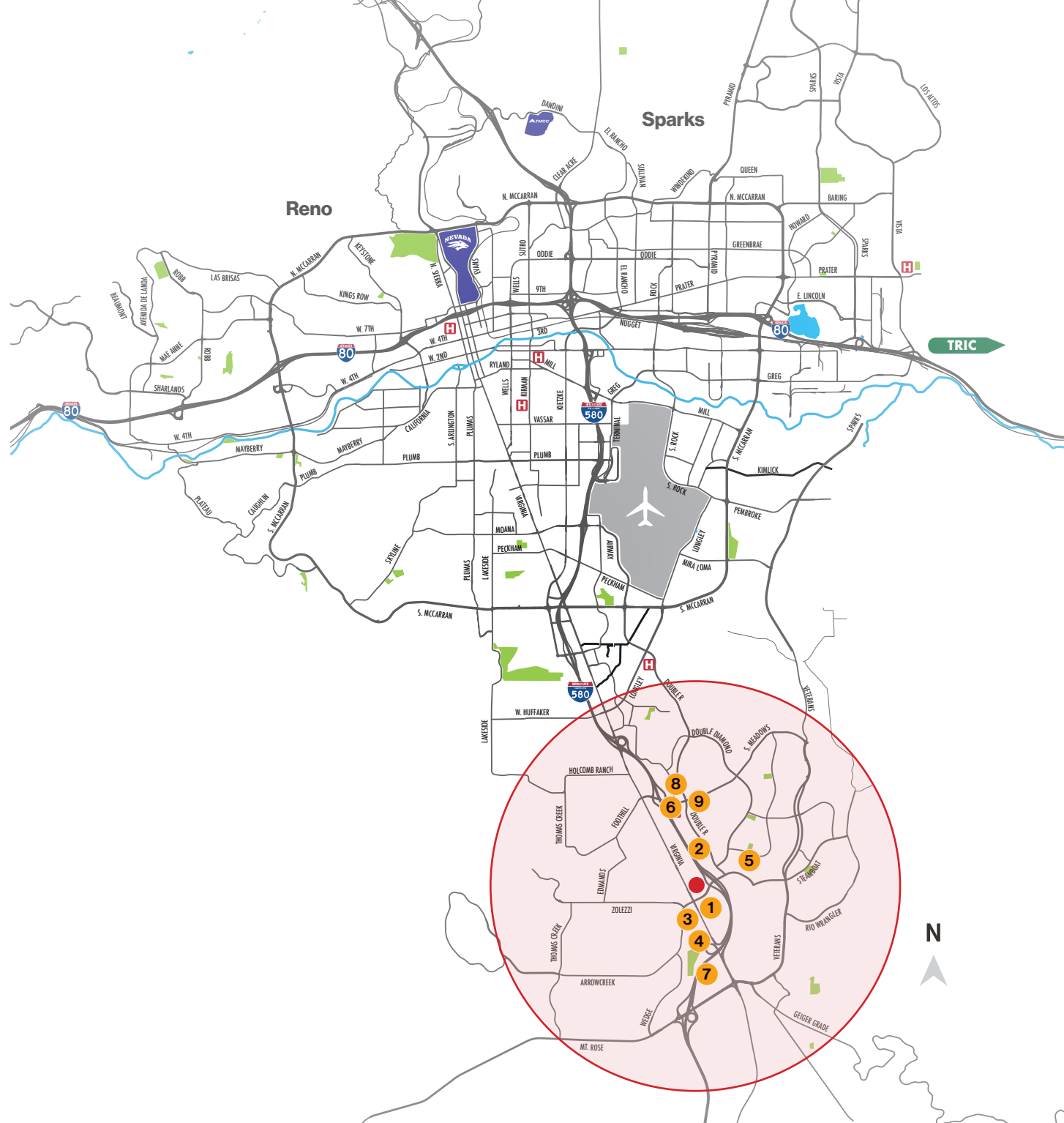


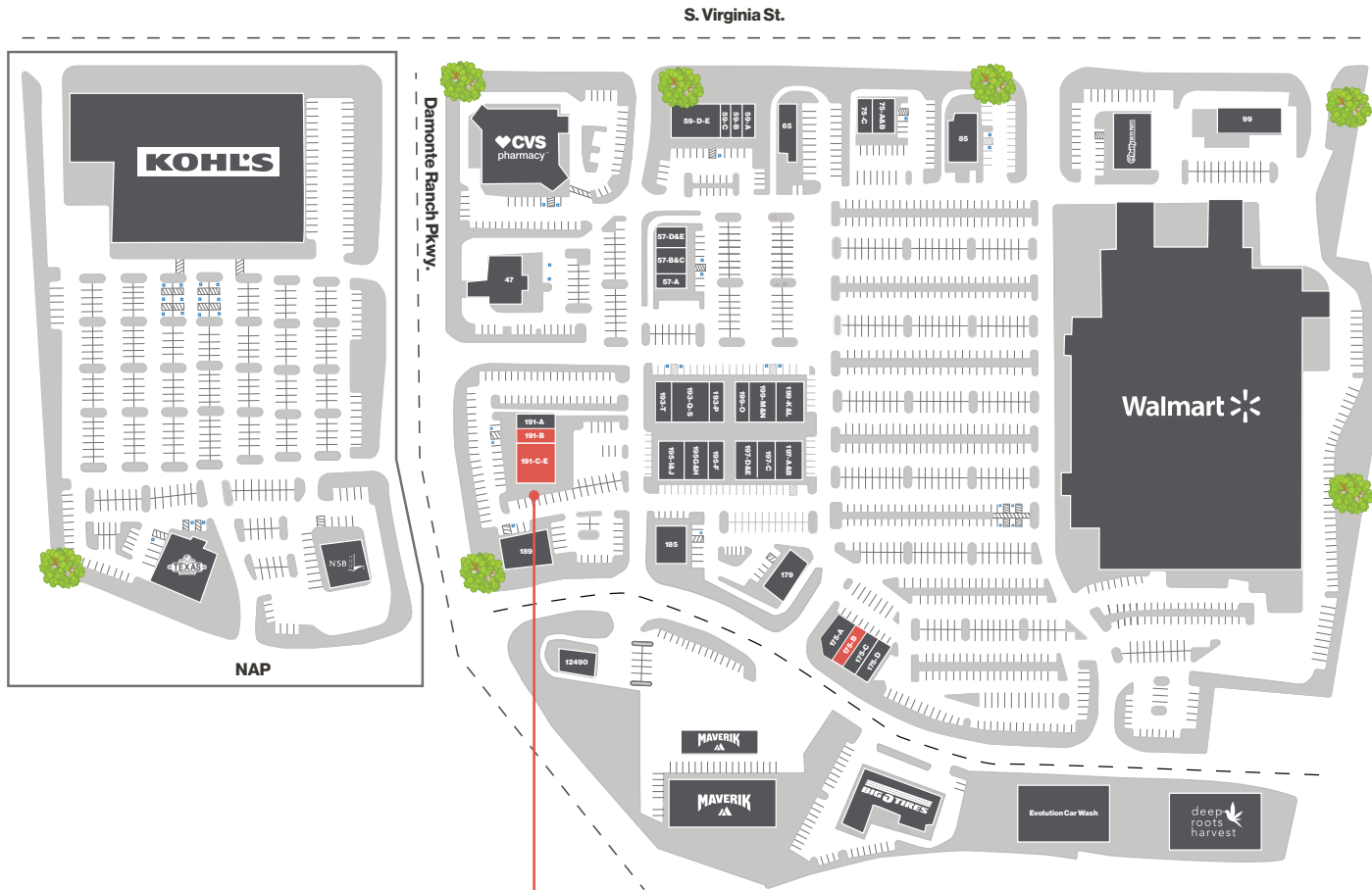
Vicinity Map

Southtowne Shopping Center is located just off I-580 in south Reno. As one of the first developments to go along with the expansion of the Damonte Ranch submarket, this Walmart-anchored is now surrounded by just under 3,000 homes within a 1-mile radius with an average household income over \$156,738 per year.

Amenities within a 5-mile radius

- 1
Kohl's
 -0.17 miles
- 2
Northern Nevada Corporate Center
 -0.17 miles
- 3
Walgreens
 -0.24 miles
- 4
Tamarack Casino
 -0.38 miles
- 5
Damonte Ranch Town Center
 -0.87 miles
- 6
Renown South Meadows Medical Center
 -1.14 miles
- 7
The Summit Reno
 -1.16 miles
- 8
South Meadows Promenade
 -1.22 miles
- 9
Village at Double Diamond
 -1.22 miles





[Click for a Virtual Tour](#) 



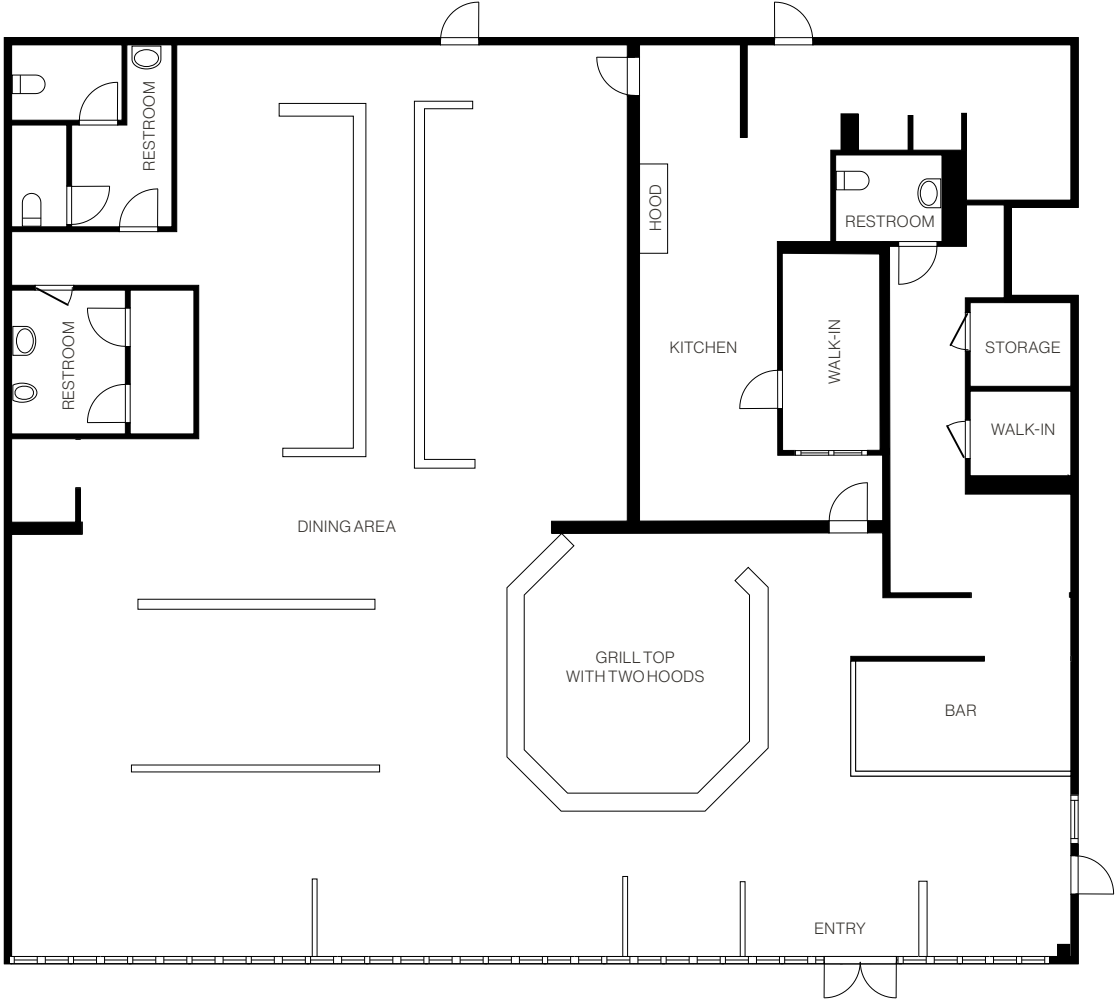
Tenant Mix

*Do not disturb current tenant

Suite	Tenant	SF
47	Heritage Bank	± 3,500 SF
55	CVS	± 16,677 SF
57-A	Doughboy Donuts	± 1,200 SF
57-B & C	T-MOBILE	± 2,040 SF
57-D & E	Cold Stone Creamery	± 2,126 SF
59-A	State Farm Insurance	± 1,200 SF
59-B	UPS Store	± 1,200 SF
59-C	Super Cuts	± 1,200 SF
59-D - G	Pacific Dental Service	± 3,600 SF
65	KFC	± 3,234 SF
75-A & B	AT&T Wireless	± 2,520 SF
75-C	Chop Stop	± 1,280 SF
85	Carl's Jr.	± 3,125 SF
91	O'Reilly	± 5,500 SF
99	USA Gasoline	N/A
155	Walmart	± 205,271 SF
175-A	PAWSitively Pets	± 2,604 SF
175-B	AVAILABLE General retail with private office and restroom in rear	± 1,200 SF
175-C	H & R Block	± 1,200 SF
175-D	Crush Nutrition	± 1,200 SF
179	Jack in the Box	± 2,596 SF

Suite	Tenant	SF
185	Round Table Pizza	± 3,000 SF
189	Huckleberry's	± 4,850 SF
191-A	Starbucks	± 1,550 SF
191-B	AVAILABLE Former juice bar with grease interceptor access in place	± 1,302 SF
191-C - E	AVAILABLE Quick-service restaurant with grease interceptor and hood in place	± 4,464 SF
193-P	Sally Beauty Supply	± 1,500 SF
193-Q - S	Dotty's	± 3,600 SF
193-T	Crumbl Cookie	± 1,500 SF
195-F	Pacific Sun	± 1,500 SF
195-G & H	Happy Foot & Nail Spa	± 2,400 SF
195-I & G	Qdoba Mexican Grill	± 2,700 SF
197-A - C	Renown	± 2,700 SF
197-D & E	Lease	± 2,700 SF
197-K & L	Firehouse Subs	± 2,400 SF
199-M - O	lji 3	± 4,200 SF
12490	Del Taco	± 2,216 SF
12450	Peerless Cleaners	± 832 SF
12270	Big O Tires	± 8,354 SF
PAD 1	Maverik	± 103,000 SF
PAD 2	Evolution Car Wash	± 26,645 SF
PAD 3	Deep Roots Harvest	± 35,415 SF

Floor Plan | Suite 191 C-E



Property Photos



LOGIC Commercial Real Estate

Specializing in Brokerage and Receivership Services



Join our email list and
connect with us on LinkedIn

The information herein was obtained from sources deemed reliable; however LOGIC Commercial Real Estate makes no guarantees, warranties or representation as to the completeness or accuracy thereof.

For inquiries please reach out to our team.

Ian Cochran, CCIM

Partner
775.225.0826
icochran@logicCRE.com
B.0145434.LLC

Greg Ruzzine, CCIM

Partner
775.450.5779
gruzzine@logicCRE.com
BS.0145435

Point of contact

Grace Keating

Associate
775.870.7806
gkeating@logicCRE.com
S.0198962