

OFFICE FOR SUBLEASE

1001 WADE AVENUE

RALEIGH, NC 27605



**NAI** TRI PROPERTIES



# 1001 WADE AVENUE

**ADDRESS** 1001 Wade Avenue, Raleigh, NC 27605

**BUILDING SIZE** Approximately 56,034 RSF

**AVAILABLE SPACE**  
Suite 100 – 11,305 SF  
Suite 111 – 2,700 SF  
Suite 200 – 2,564 SF

**RENTAL RATE** Negotiable

**OPERATING EXPENSES** Full service, no pass throughs

**TERM** Term negotiable - Lease expires 10/31/2030

**HIGHLIGHTS**

- “Inside-the-beltline” location
- Outstanding visibility from Wade Avenue
- Monument signage
- Shared 25 - 30 person training room and break room with vending
- Furnishings available
- Minutes from major thoroughfares

Amenity drive times:  
Cameron Village 2 minutes  
Five Points 3 minutes  
Glenwood South 5 minutes  
Carolina Country Club 6 minutes

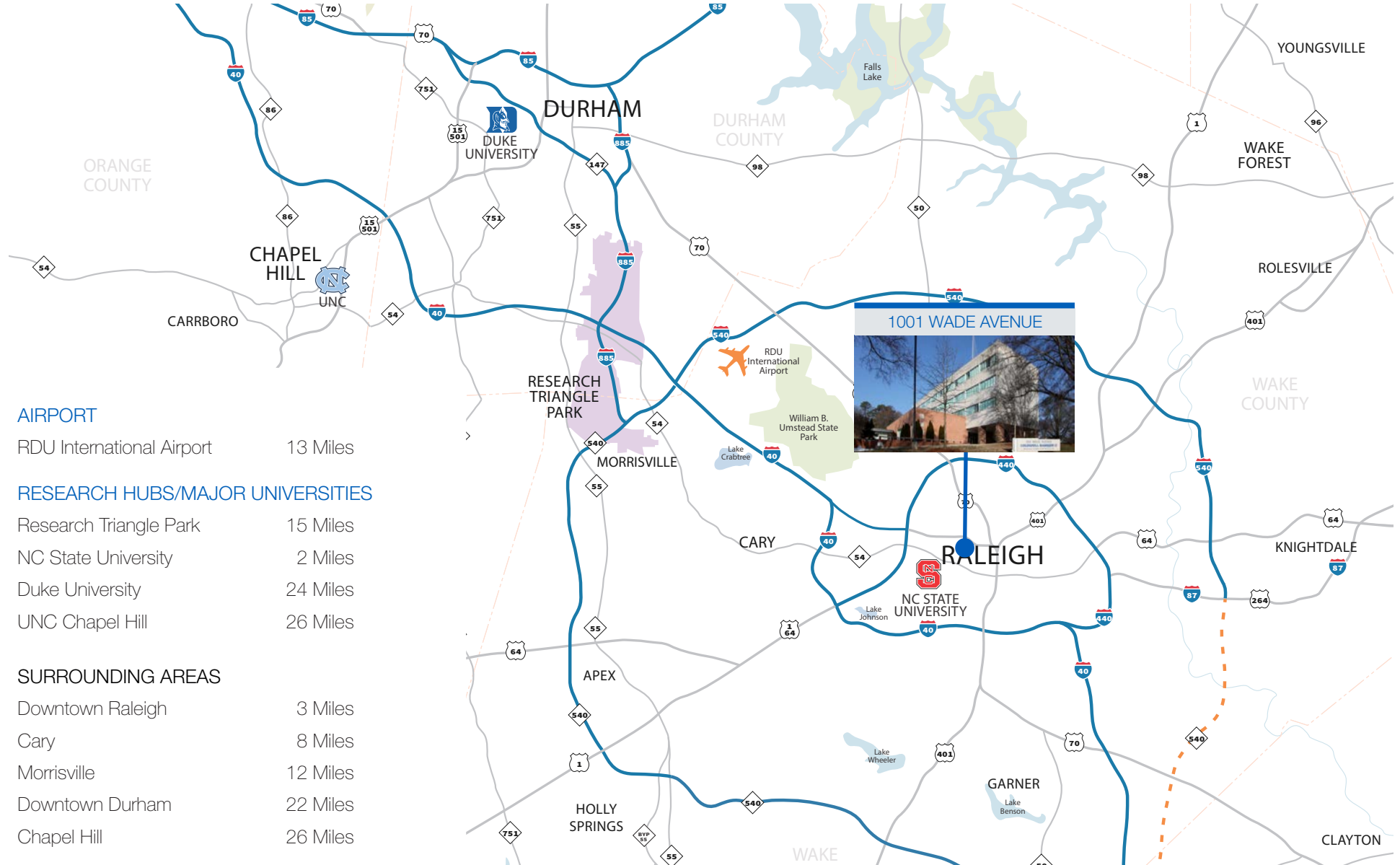
## CONTACT

ROBIN ROSEBERRY ANDERS, SIOR | 919.369.6713 | randers@triprop.com

THOMAS FLYNN | 919.281.2304 | tflynn@triprop.com



# TRIANGLE REGION



## CONTACT

ROBIN ROSEBERRY ANDERS, SIOR | 919.369.6713 | randers@triprop.com

THOMAS FLYNN | 919.281.2304 | tflynn@triprop.com

All information provided herein is from sources deemed reliable. However, all information is subject to verification. NAI Tri Properties does not independently verify nor warrant the accuracy of the information.

**NAI TRI PROPERTIES**



**VILLAGE DISTRICT**

Oberlin Road

OBERLIN COURT



RTP  
DOWNTOWN DURHAM  
CHAPEL HILL

1001 WADE AVENUE



Wade Avenue

BROUGHTON  
HIGH SCHOOL

DOWNTOWN  
RALEIGH

FRED FLETCHER  
PARK

DOWNTOWN  
RALEIGH

## CONTACT

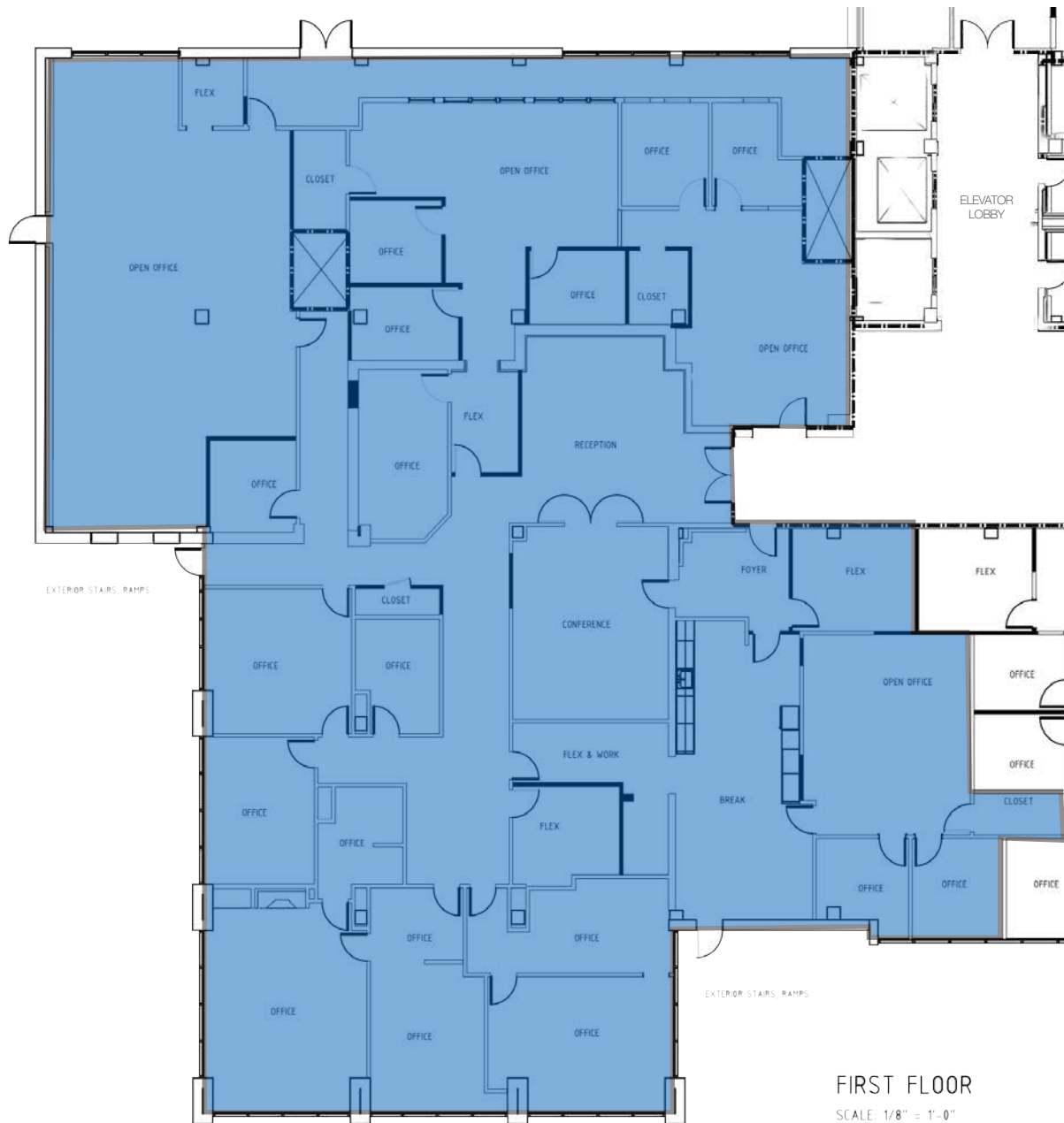
ROBIN ROSEBERRY ANDERS, SIOR | 919.369.6713 | randers@triprop.com  
THOMAS FLYNN | 919.281.2304 | tflynn@triprop.com

All information provided herein is from sources deemed reliable. However, all information is subject to verification.  
NAI Tri Properties does not independently verify nor warrant the accuracy of the information.

**NAI TRI PROPERTIES**



# FLOOR PLANS



SCAN OR  
CLICK FOR  
VIRTUAL TOUR



SUITE 100 - 11,305 RSF

FIRST FLOOR

SCALE: 1/8" = 1'-0"

## CONTACT

ROBIN ROSEBERRY ANDERS, SIOR | 919.369.6713 | randers@triprop.com

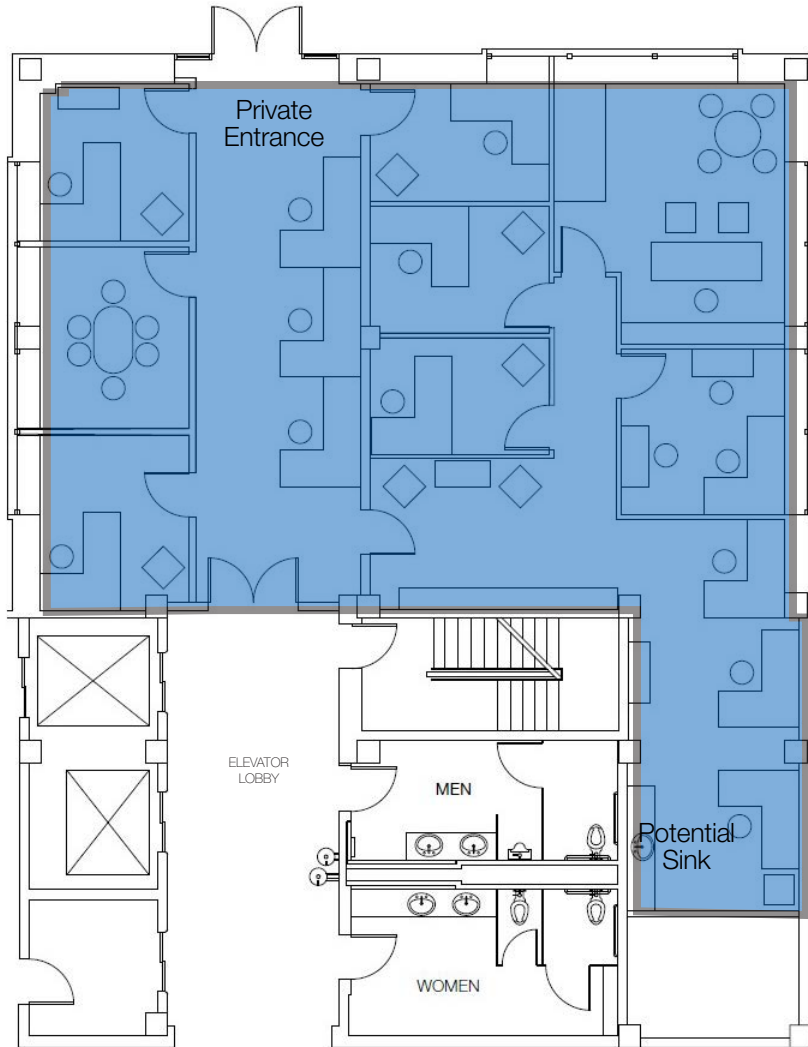
THOMAS FLYNN | 919.281.2304 | tflynn@triprop.com

All information provided herein is from sources deemed reliable. However, all information is subject to verification. NAI Tri Properties does not independently verify nor warrant the accuracy of the information.

**NAI** TRI PROPERTIES

# FLOOR PLANS

SCAN OR  
CLICK FOR  
VIRTUAL TOUR



SUITE 111 - 2,700 RSF

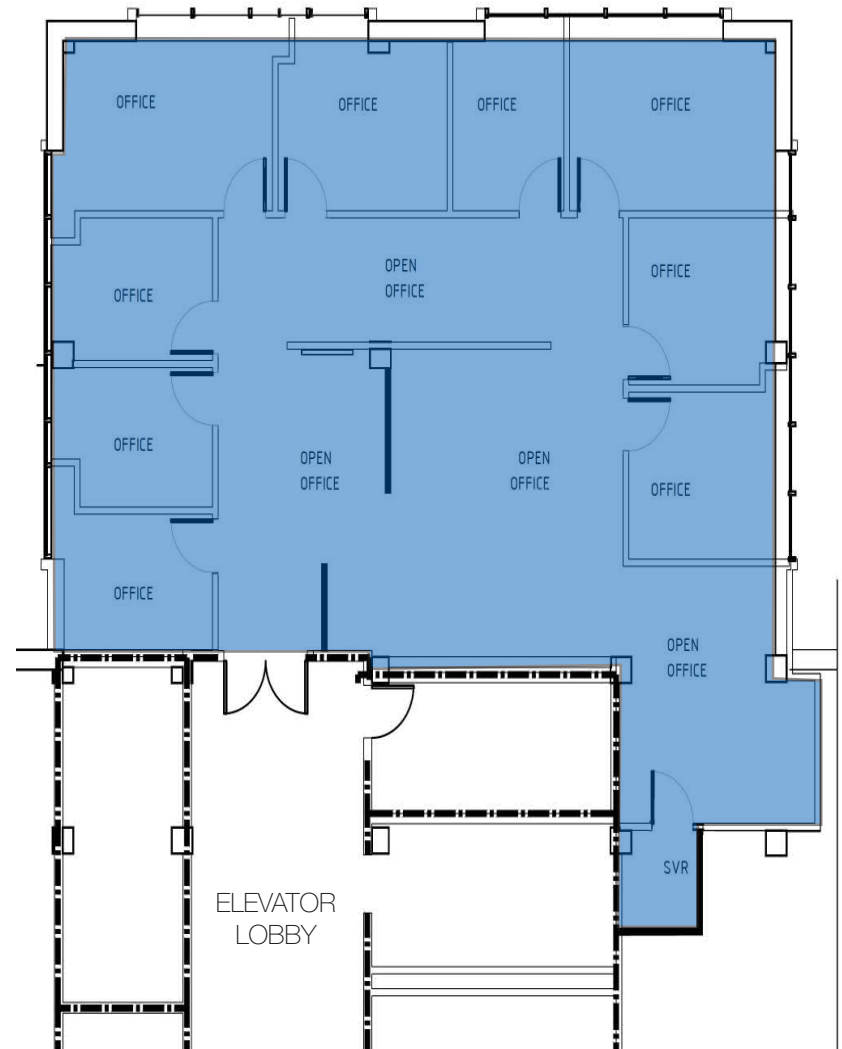
## CONTACT

ROBIN ROSEBERRY ANDERS, SIOR | 919.369.6713 | randers@triprop.com

THOMAS FLYNN | 919.281.2304 | tflynn@triprop.com

All information provided herein is from sources deemed reliable. However, all information is subject to verification. NAI Tri Properties does not independently verify nor warrant the accuracy of the information.

SCAN OR  
CLICK FOR  
VIRTUAL TOUR



SUITE 200 - 2,564 RSF

**NAI** TRI PROPERTIES

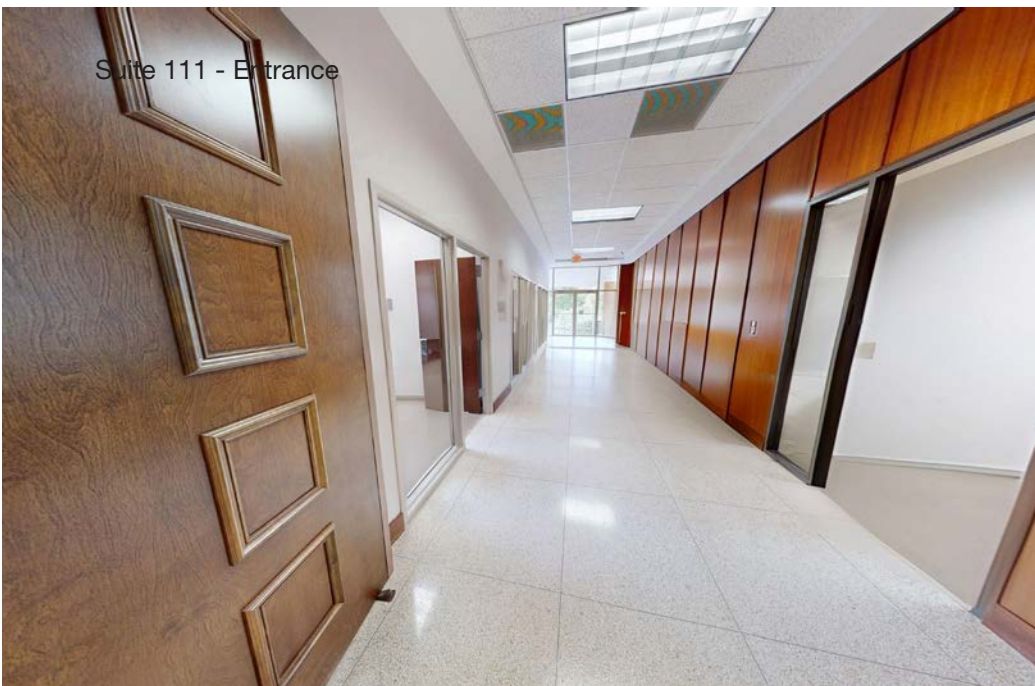
Suite 100 - Reception area



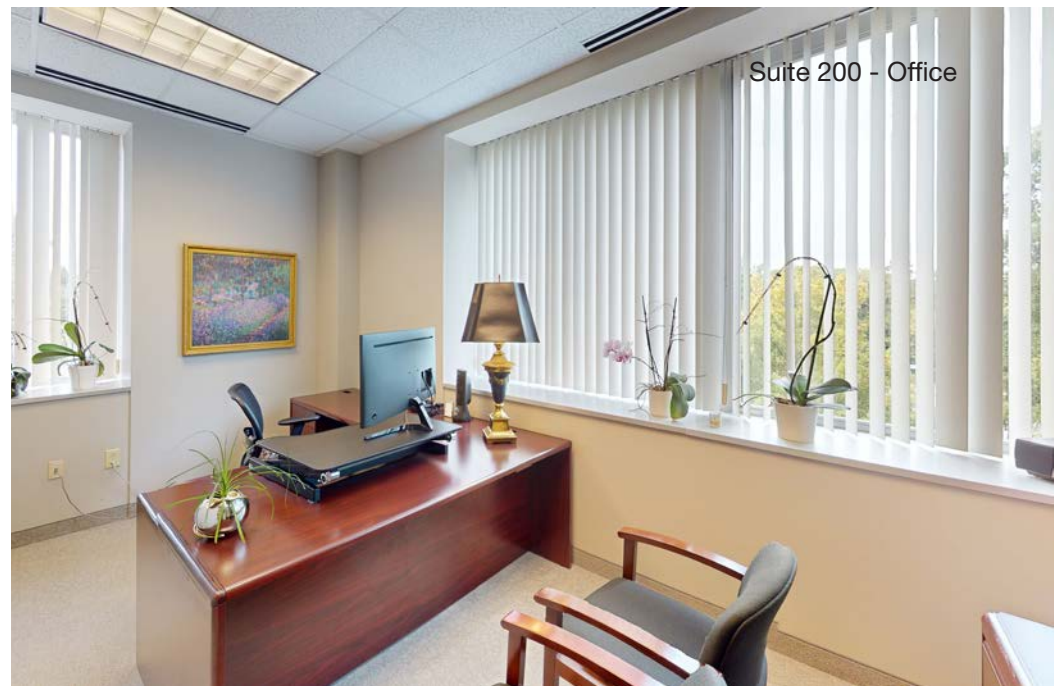
Suite 100 - Conference Room



Suite 111 - Entrance



Suite 200 - Office



## CONTACT

ROBIN ROSEBERRY ANDERS, SIOR | 919.369.6713 | [randers@triprop.com](mailto:randers@triprop.com)

THOMAS FLYNN | 919.281.2304 | [tflynn@triprop.com](mailto:tflynn@triprop.com)

All information provided herein is from sources deemed reliable. However, all information is subject to verification. NAI Tri Properties does not independently verify nor warrant the accuracy of the information.

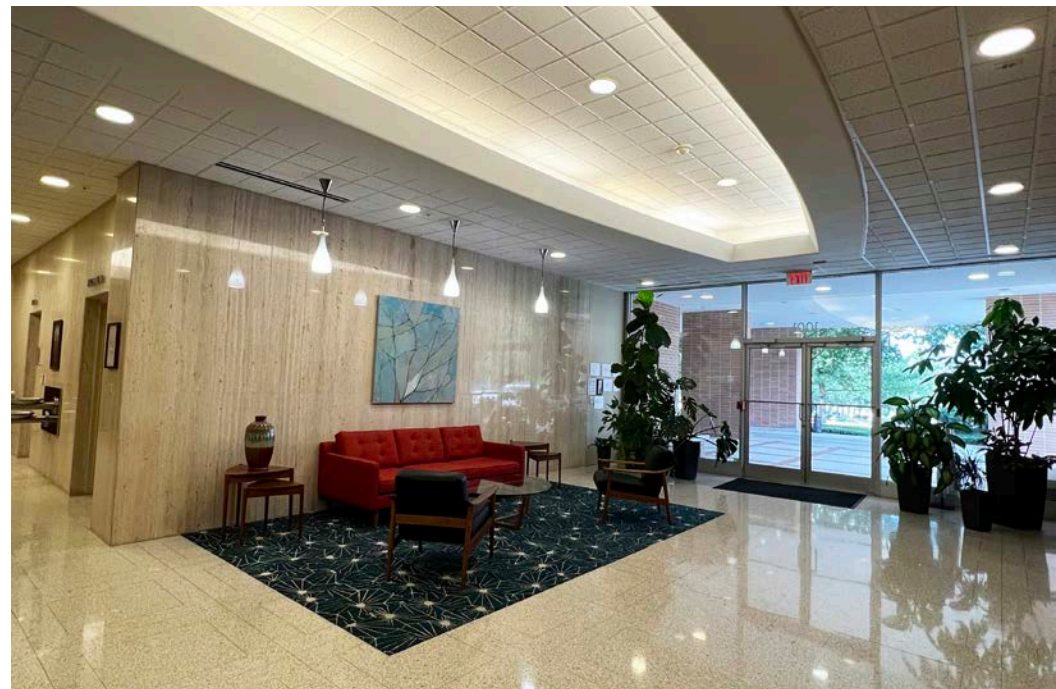
**NAI TRI** PROPERTIES



Training room



Break room



## CONTACT

ROBIN ROSEBERRY ANDERS, SIOR | 919.369.6713 | [randers@triprop.com](mailto:randers@triprop.com)

THOMAS FLYNN | 919.281.2304 | [tflynn@triprop.com](mailto:tflynn@triprop.com)

All information provided herein is from sources deemed reliable. However, all information is subject to verification. NAI Tri Properties does not independently verify nor warrant the accuracy of the information.

**NAI** TRI PROPERTIES