

for sale: downtown los angeles flex distribution and showroom



method
COMMERCIAL

Presented By:

Martin McDermott
323.452.6762
martin@methodcre.com



915 VENICE BLVD

LOS ANGELES, CA 90015

SALE PRICE: ~~\$3,250,000~~ \$2,775,000

Perfect for last-mile distribution, including a micro-fulfillment center with on-grade loading; extensive exterior and interior security systems (mag locks, cameras, key-card access, alarm system, and robust exterior lighting); and 3,200 square feet of temperature-controlled, clear-span space adjacent to the loading door, with power distributed for smart rack systems designed to maximize efficiency, speed, and storage density. The property also includes an additional 3,000 square feet programmed for packing and dispatch, supplemental storage, office space, a vault, four ADA-compliant restrooms, a staff locker room, and a staff kitchen.

The building also functions as an exceptional industrial showroom, featuring stunning interior lighting, polished concrete floors, a secure lobby, and street-facing display wall and signage to support branding.



Lot Size:	7,307 SF
Building Size:	6,240 SF
Zoning:	LAM1
Year Built:	1921
APN:	5135030012

Confidentiality & Disclaimer

All materials and information received or derived from Method Commercial its directors, officers, agents, advisors, affiliates and/or any third party sources are provided without representation or warranty as to completeness, veracity, or accuracy, condition of the property, compliance or lack of compliance with applicable governmental requirements, developability or suitability, financial performance of the property, projected financial performance of the property for any party's intended use or any and all other matters.

Neither Method Commercial its directors, officers, agents, advisors, or affiliates makes any representation or warranty, express or implied, as to accuracy or completeness of the any materials or information provided, derived, or received. Materials and information from any source, whether written or verbal, that may be furnished for review are not a substitute for a party's active conduct of its own due diligence to determine these and other matters of significance to such party. Method Commercial will not investigate or verify any such matters or conduct due diligence for a party unless otherwise agreed in writing.

EACH PARTY SHALL CONDUCT ITS OWN INDEPENDENT INVESTIGATION AND DUE DILIGENCE.

Any party contemplating or under contract or in escrow for a transaction is urged to verify all information and to conduct their own inspections and investigations including through appropriate third party independent professionals selected by such party. All financial data should be verified by the party including by obtaining and reading applicable documents and reports and consulting appropriate independent professionals. Method Commercial makes no warranties and/or representations regarding the veracity, completeness, or relevance of any financial data or assumptions. Method Commercial does not serve as a financial advisor to any party regarding any proposed transaction. All data and assumptions regarding financial performance, including that used for financial modeling purposes, may differ from actual data or performance. Any estimates of market rents and/or projected rents that may be provided to a party do not necessarily mean that rents can be established at or increased to that level. Parties must evaluate any applicable contractual and governmental limitations as well as market conditions, vacancy factors and other issues in order to determine rents from or for the property.

Legal questions should be discussed by the party with an attorney. Tax questions should be discussed by the party with a certified public accountant or tax attorney. Title questions should be discussed by the party with a title officer or attorney. Questions regarding the condition of the property and whether the property complies with applicable governmental requirements should be discussed by the party with appropriate engineers, architects, contractors, other consultants and governmental agencies. All properties and services are marketed by Method Commercial in compliance with all applicable fair housing and equal opportunity laws.

Contents

PROPERTY INFORMATION	4
OPPORTUNITY ZONE	9
LEED CERTIFICATION	11
LOCATION INFORMATION	13
DEMOGRAPHICS	16
ADVISOR BIO	18





section 1

**property
information**



PROPERTY HIGHLIGHTS

- Micro-fulfillment center, industrial showroom, light-distribution, temperature-controlled storage
- \$230,000,000 spent on groceries, apparel, pets, prescriptions, and other small goods within 1 mile!
- Located at the intersection of the 10 and 110 freeways, with quick access to 310,000 people within two miles
- \$1,350,000 invested in capital improvements on the property
- Tax benefits of the DTLA Opportunity Zone
- Seller financing is available for qualified buyers and terms

100% BONUS DEPRECIATION

- With the reinstated 100% bonus depreciation, buyer should consider cost segregation.



EXTERIOR DESCRIPTION

New LED lighting, storefront glass, roll-down doors in the front and back, and a security system. New roof and external insulation.

INTERIOR DESCRIPTION

Silver LEED-Certified. Interior improvements included a new 200 amps three-phase and a 200 amps single-phase power service, distributed power for smart racking systems, HVAC system, all seismic work, four ADA bathrooms, ADA access, staff kitchen, plumbing, drywall, security features and systems including cameras and key cards, lighting system with Illuminator backup, fire/life/safety system, polished concrete floors, glass lobby doors, among other improvements. Please note that there is no gas service.

PARKING DESCRIPTION

Private loading area, plus adjacent public parking lot and abundant street parking.

CONSTRUCTION DESCRIPTION

Completed 2023. Silver LEED Certified. All improvements were done under the review of the Architectural and Engineering Consultants. All the improvements provide for a fully ADA-compliant building. Structural improvements will allow for full use of the storefront façade display bays. Structural improvements also include reinforcement of the existing bow truss roof system. The building is currently permitted as a retail use.

ZONING

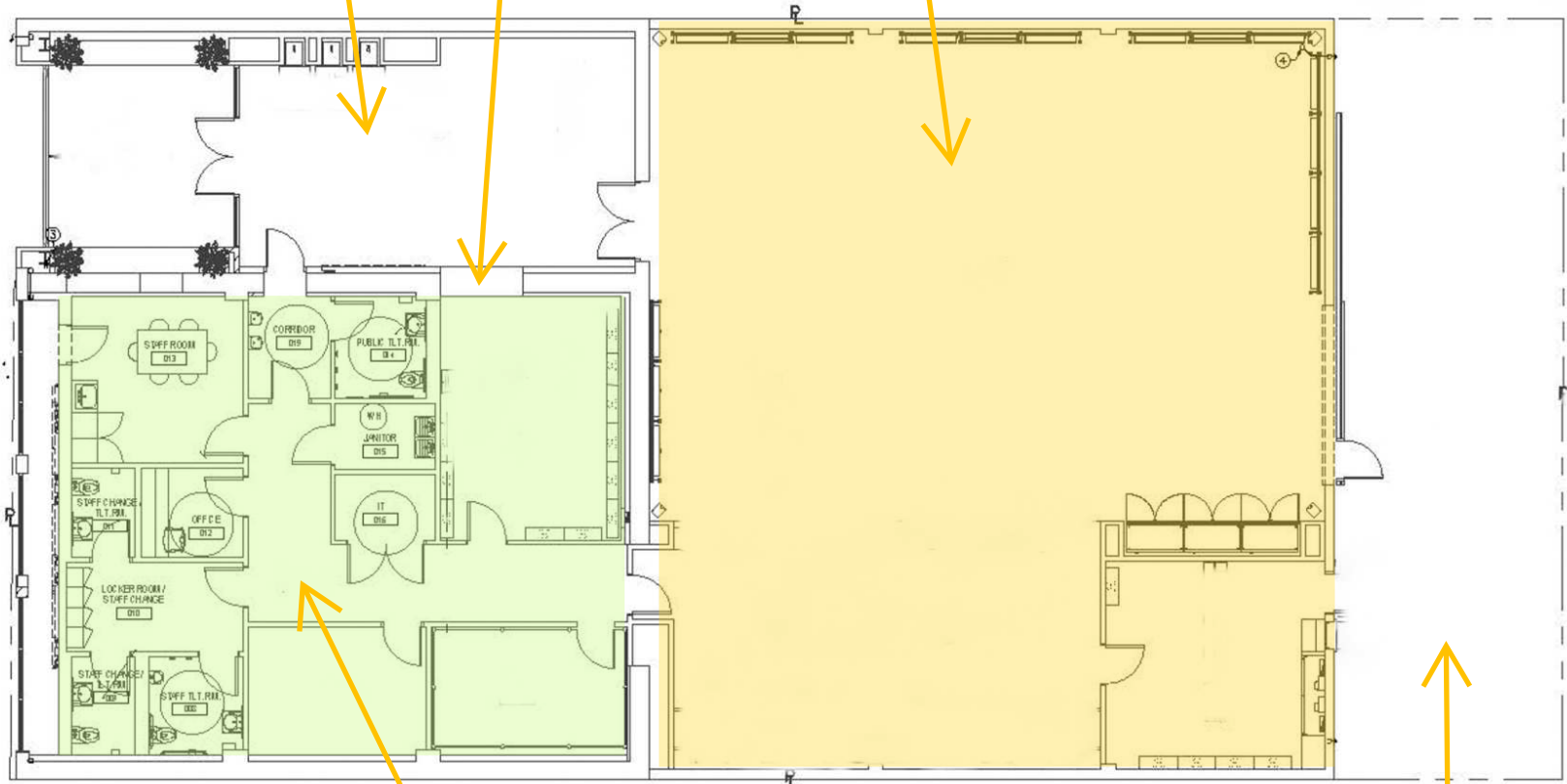
LAM1-1
 AB 2097
 TOC Tier 2
 Westlake Community Plan Area
 CD1-Eunisses Hernandez
 State Enterprise Zone
 Opportunity Zone

floor plan

Lobby

Quick pick up window

3,200sq. ft. of temperature controlled, roll-up door access, clear-span, and powered floor for distribution or showroom.



Additional storage, vault, office, staff kitchen and ADA bathrooms.

Over 1,000 sq ft. loading yard.





section 2

**opportunity
zone**

TAX BENEFIT*

The amount of time you hold the Qualified Opportunity Fund investment determines the tax benefit you receive. When you make an election to defer the gain, the basis in the Qualified Opportunity Fund investment becomes zero. The Qualified Opportunity Fund basis increases the longer you hold your interest in the Qualified Opportunity Fund.

TAX BENEFIT ON TEMPORARY DEFERRAL

- If you hold your investment in the Qualified Opportunity Fund for at least 5 years, your basis (the amount of your investment) will increase by 10% of the deferred gain.
- If you hold your investment in the Qualified Opportunity Fund for at least 7 years, your basis (the amount of your investment) will increase by an additional 5% of the deferred gain.

ADJUSTMENT OF BASIS AFTER 10 YEARS

- If you hold your investment in the Qualified Opportunity Fund for at least 10 years, you may be able to permanently exclude gain resulting from a qualifying investment when it is sold or exchanged.
- The exclusion occurs if you elect to increase the basis of your Qualified Opportunity Fund investment to its fair market value on the date of the sale or exchange.

*IRS “Invest in a Qualified Opportunity Fund” <https://www.irs.gov/credits-deductions/businesses/invest-in-a-qualified-opportunity-fund>





section 3

leed
certification



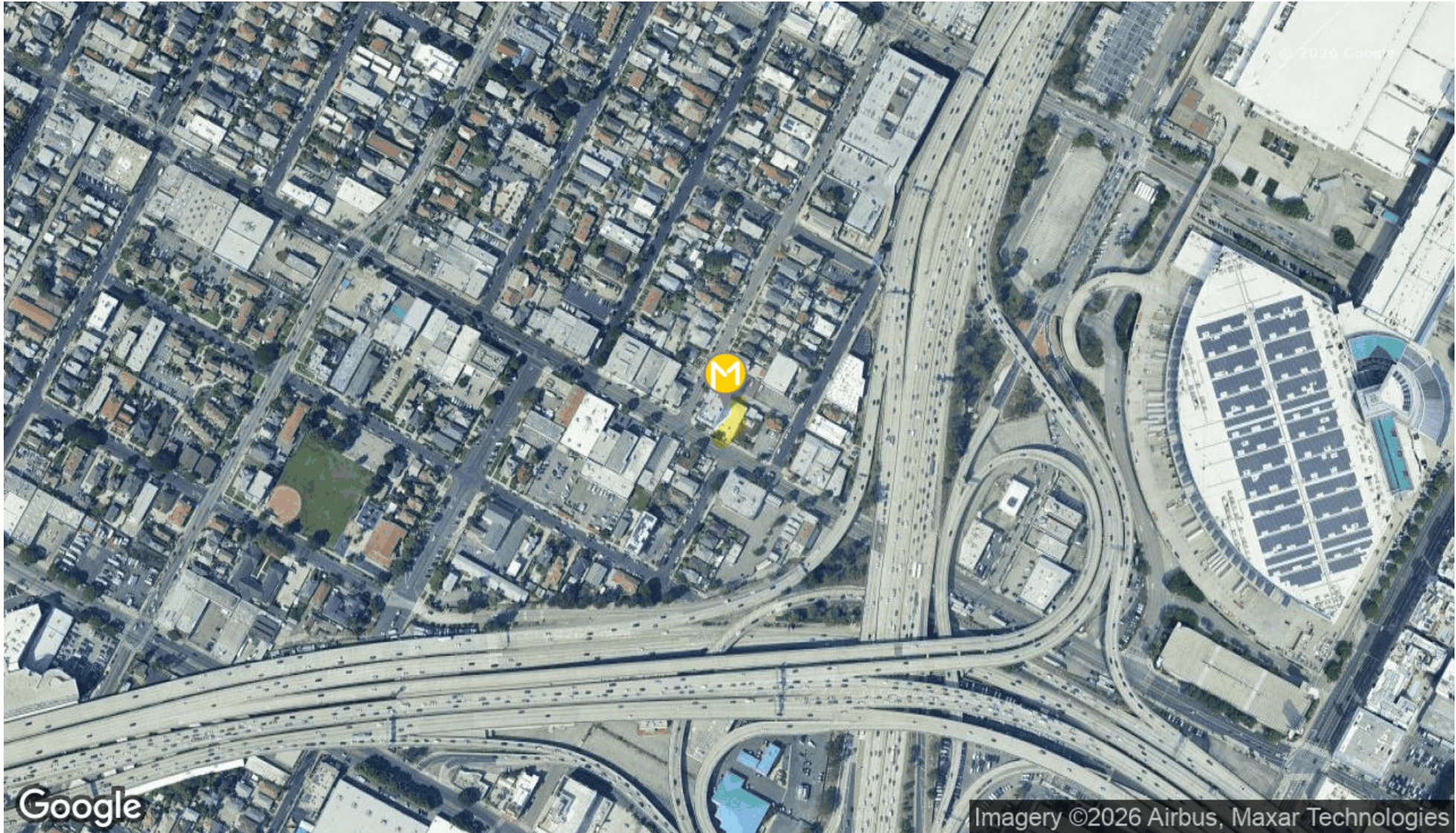
- **Better for business and the bottom line:** LEED buildings have a higher resale value and lower operational costs than non-LEED buildings. They've proven to be top-performing commercial real estate investments. LEED buildings use, on average, 25% less energy than non-LEED buildings
- **Better for people:** LEED-certified buildings focus on occupant well-being, offering a healthier and more satisfying indoor space while addressing community and public health. 93% of those who work in LEED-certified green buildings say they are satisfied on the job, vs 81% in conventional buildings.
- **Better for the environment:** LEED buildings use less energy and water, utilize renewable energy and fewer resources, create less waste, and preserve land and habitat.

USGBC “Benefits of LEED” <https://www.usgbc.org/press/about-leed>



section 4

**location
information**



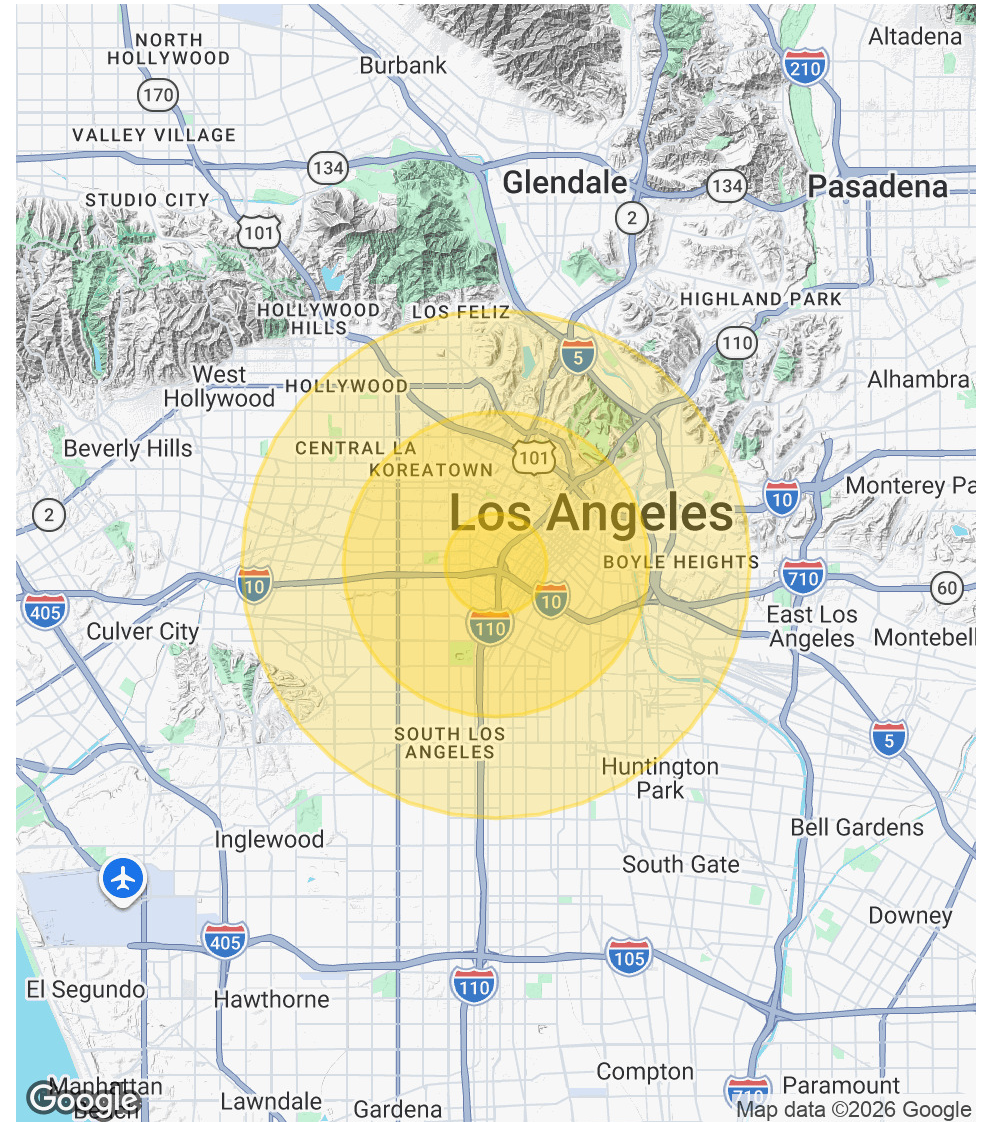


section 5

demographics

SELECTED DEMOGRAPHICS

	1 MILE	3 MILES	5 MILES
Total Population	75,014	598,155	1,241,330
Average HH Income	\$71,912	\$70,718	\$78,104
Average House Value	\$815,484	\$777,189	\$805,128
Total Consumer Spending	\$716.9M	\$5.4B	\$12B
Traffic volume at Venice and Union	15,418		





section 6

advisor bio

MARTIN MCDERMOTT
Managing Director



T 323.452.6762
martin@methodcre.com
CalDRE #01369084

Professional Background

Since 2002, Martin McDermott has assisted clients in achieving their strategic business goals through the sale, purchase, and leasing of office, retail, industrial, and development properties. While Mr. McDermott represented the United States Postal Service in all its lease renewals from Santa Barbara County through Orange County over four years, most of the focus has been on the private investor. Mr. McDermott co-founded Method Commercial in 2017 to better serve this group, primarily comprised of local family offices, private trusts, high-net worth individuals, non-profits, owner-users, developers, and value-add investors.

Mr. McDermott is an expert at negotiating in difficult positions, including lease renewals, recessionary economies, environmental and other encumbrances, and off-market opportunities. He also has a twenty-three-year track record of uncovering overlooked value.

Mr. McDermott is currently a certified mentor in the Small Business Administration's Los Angeles division SCORE program. From 2013 to 2020, he designed and taught courses for the prestigious Urban Land Institute. Clients benefit from the coaching, leadership, and management skills Mr. McDermott honed working with Fortune 500 business leaders while Director of Business Development at the Ross School of Business at the University of Michigan.

Before co-founding Method Commercial, Mr. McDermott was a leading agent at Grubb & Ellis and a Founding Principal at Avison Young, Los Angeles.

Memberships & Affiliations

Mr. McDermott is a certified Small Business Administration SCORE mentor, a former instructor with the Urban Land Institute and the Los Angeles chapter of the Real Estate Associate Program (REAP), a Certified Commercial Investment Member (CCIM), and holds a California Real Estate Broker's license.

Education

A.B. in Diplomacy and World Affairs and an emphasis in International Environmental Policy from Occidental College. Executive education courses in Sales, Marketing, Strategy and Leadership at The Ross School of Business at the University of Michigan.

Thank You

For more
information or to
schedule a tour...

Martin McDermott
323.452.6762
martin@methodcre.com

