



Colliers

For Sale or Lease

**215 Brooke Ave
Norfolk, VA**

First Floor Office Condo | Unit D

Ricky Anderson

Executive Vice President

+1 757 217 1892

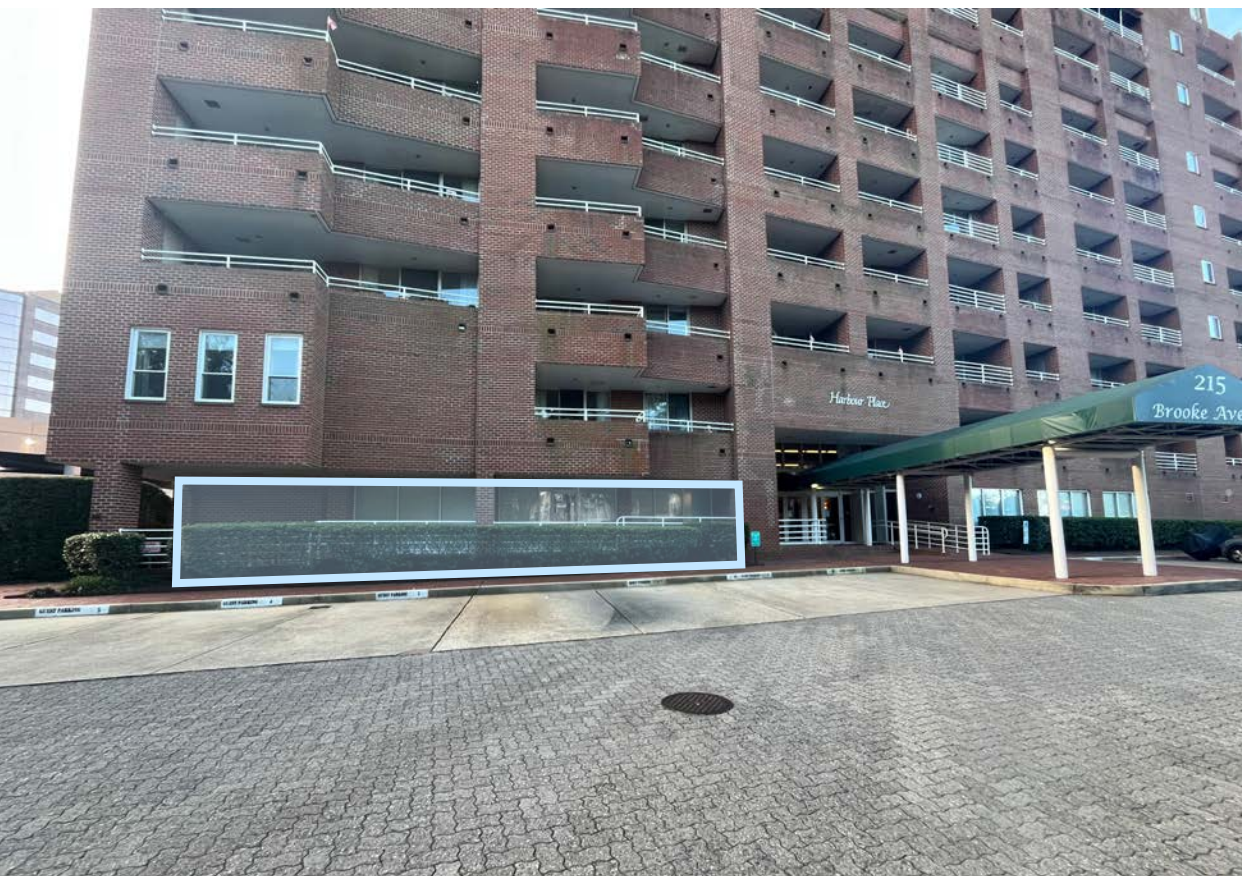
ricky.anderson@colliers.com

Drew Ott

Senior Associate

+1 757 228 1826

drew.ott@colliers.com



Features

- Dual Commercial and Residential zoning
- Exterior entrance with direct access to the suite
- Parking includes 8 parking passes — 1 reserved space at front of building and 7 convenient low-cost street spaces, with additional visitor parking available
- Close proximity to restaurants, shopping, The ERT, Nauticus, and Town Point Park
- Access to building amenities including pool, sauna, jacuzzi, gym, and community room
- 24/7 security on site

Purchase Price:

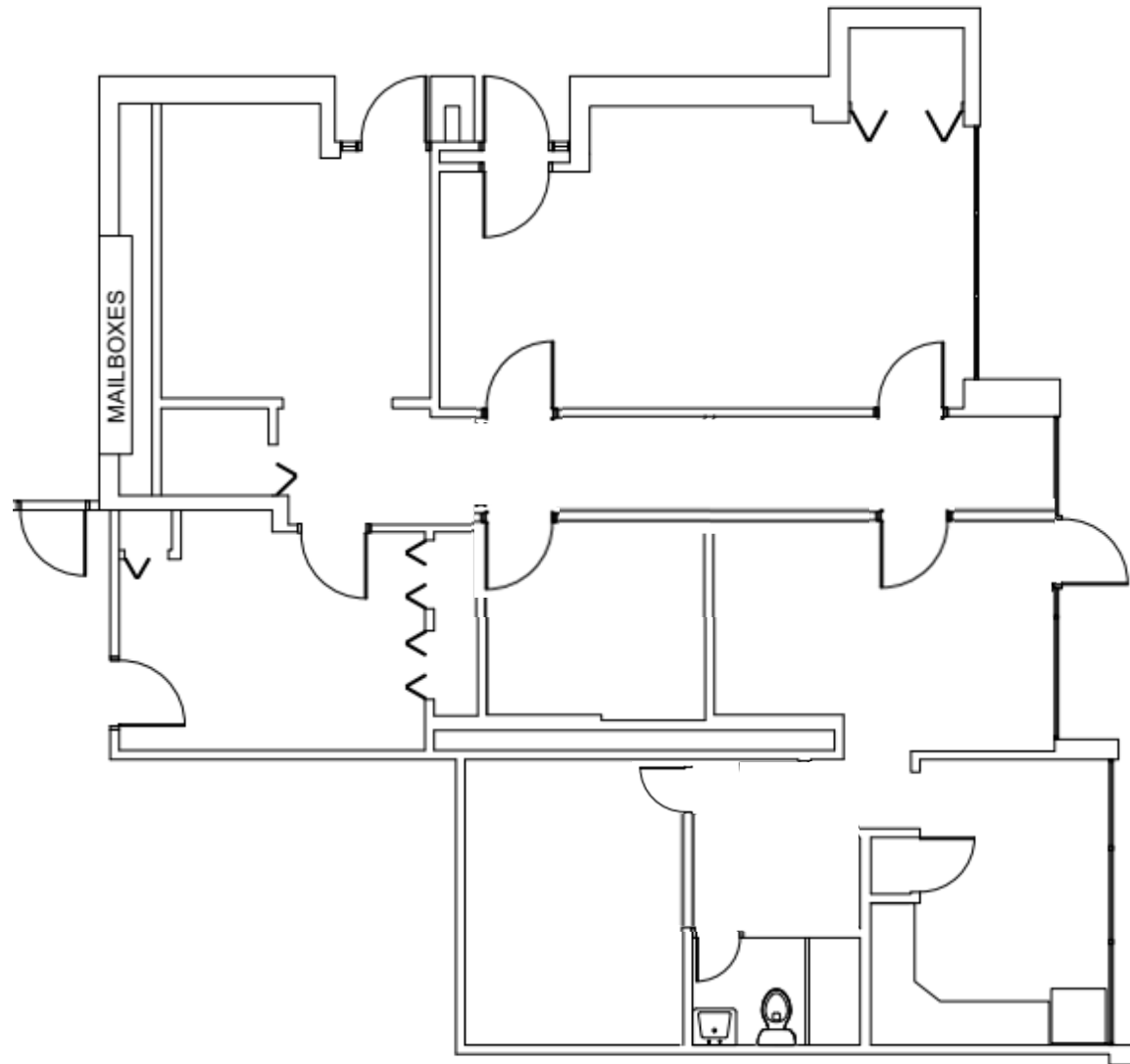
\$330,000

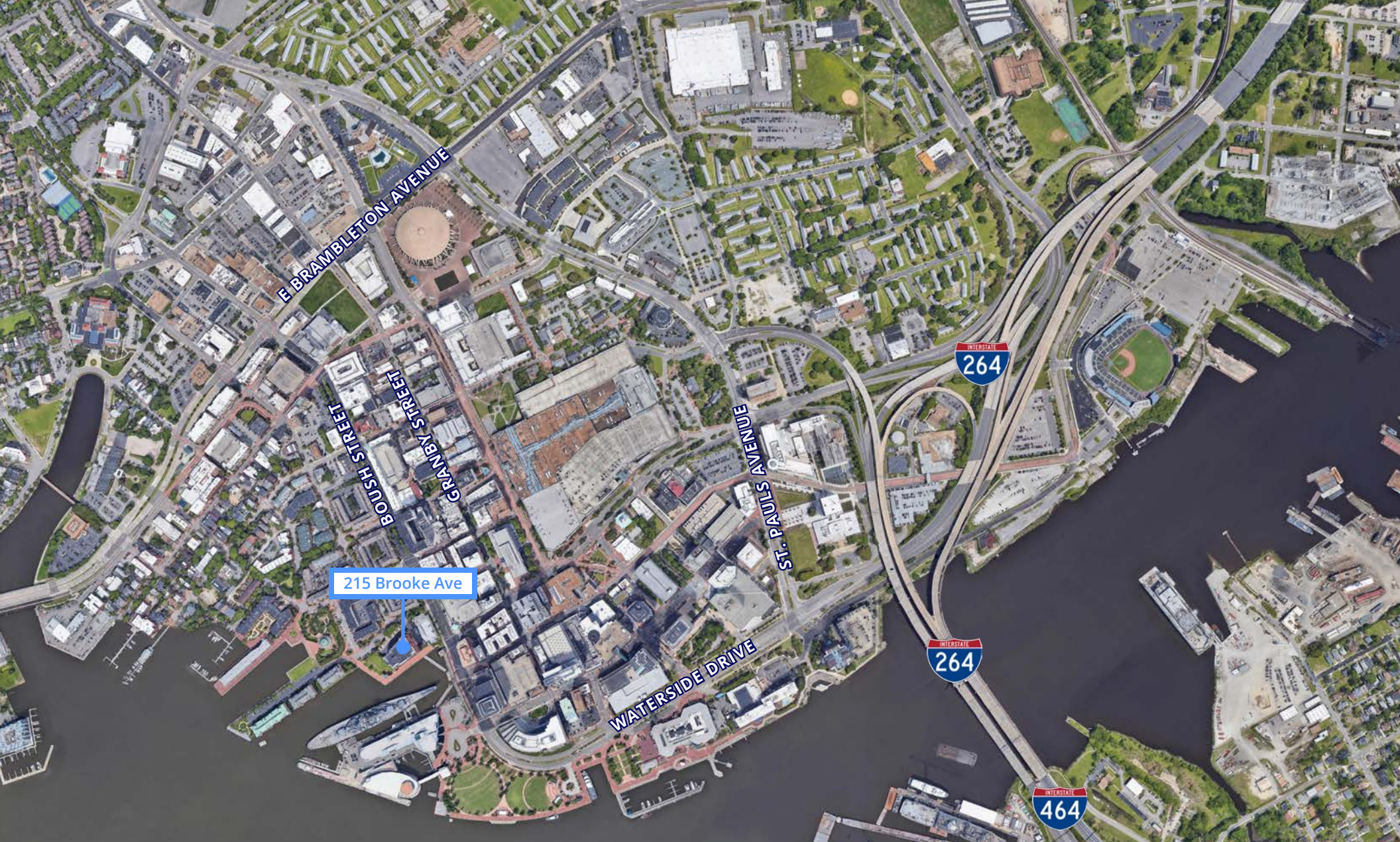
Lease Rate:

\$16.00 PSF, NNN

Floor Plan

Unit D | 1,551 SF





Ricky Anderson

Executive Vice President
+1 757 217 1892
ricky.anderson@colliers.com

Drew Ott

Senior Associate
+1 757 228 1826
drew.ott@colliers.com

150 West Main St, Suite 1100
Norfolk, VA 23510
+1 757 490 3300
colliers.com/norfolk

Colliers

This document/email has been prepared by Colliers for advertising and general information only. Colliers makes no guarantees, representations or warranties of any kind, expressed or implied, regarding the information including, but not limited to, warranties of content, accuracy and reliability. Any interested party should undertake their own inquiries as to the accuracy of the information. Colliers excludes unequivocally all inferred or implied terms, conditions and warranties arising out of this document and excludes all liability for loss and damages arising there from. This publication is the copyrighted property of Colliers and /or its licensor(s). © 2025. All rights reserved. This communication is not intended to cause or induce breach of an existing listing agreement. **Colliers International Virginia, LLC.**