

900 N Arlington Heights Road

Itasca, Illinois 60143

105,318 SF (Divisible) High Image Three-Story Office Building



900 N Arlington Heights Road
Itasca, Illinois 60143

Office Building For Sale or Lease

Building Features and Amenities

- + 105,318 SF (98,625 RSF)
- + High image three-story office building fronting on the new I-390 expressway
- + Striking three-story, upgraded atrium lobby with Wi-Fi
- + Central location with excellent access to I-390, I-290, I-90 and Rte. 53
- + Monument and on-building signage available
- + +/- 10,100 SF of storage/warehouse with a dock
- + Storage space available
- + Internet provided by Comcast and AT&T
- + Close to hotels, restaurants and retail
- + Low DuPage County taxes
- + New Wi-Fi lounge including conference center, Grab & Go deli, game area and outdoor seating
- + 5/1,000 parking
- + Minutes to both the I-490 (I-294 bypass) and to the future O'Hare Western Access (under construction)

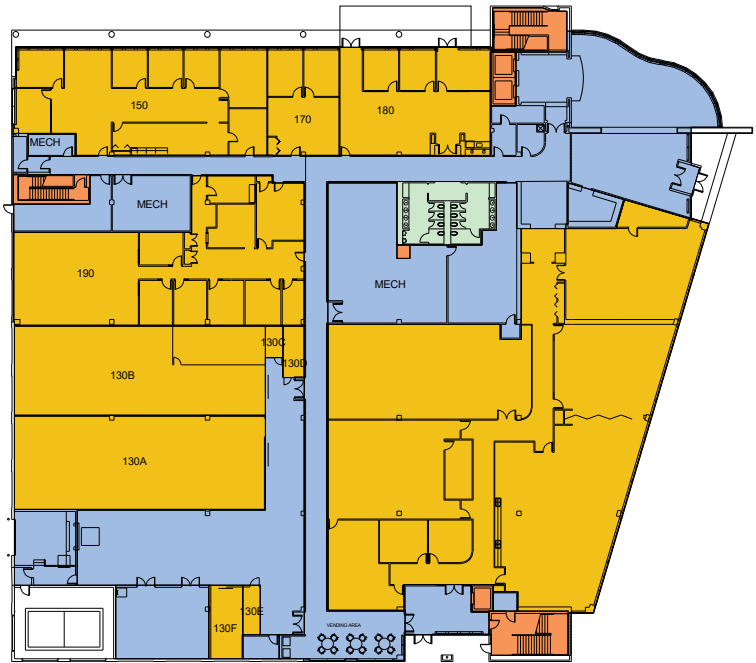
Space Available	Square Feet
1st Floor	43,216 SF
2nd Floor	31,051 SF
3rd Floor	31,051 SF
TOTAL	105,318 SF (divisible)



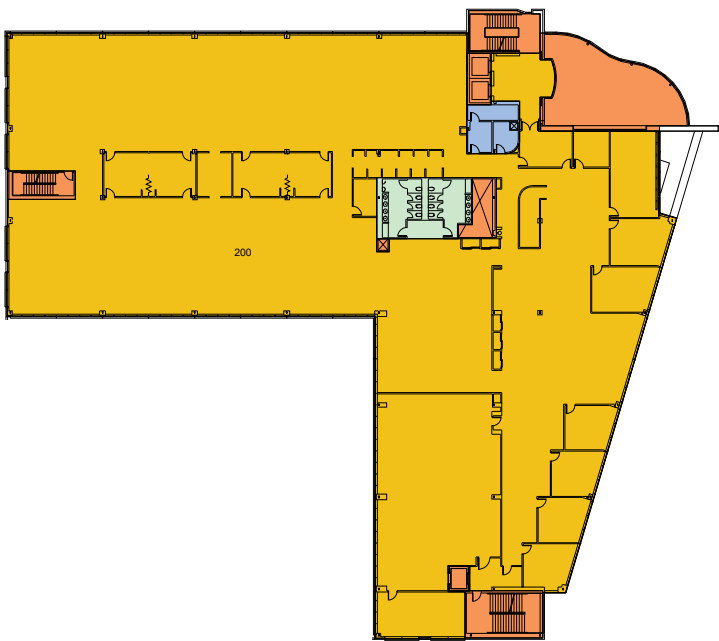
Office Building For Sale or Lease

Floor Plans

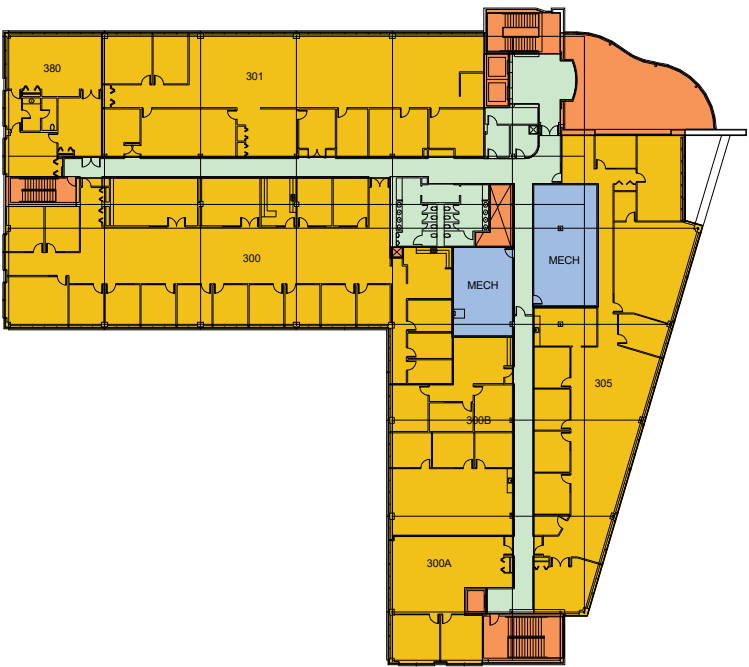
1st Floor - 43,216 SF



2nd Floor - 31,051 SF

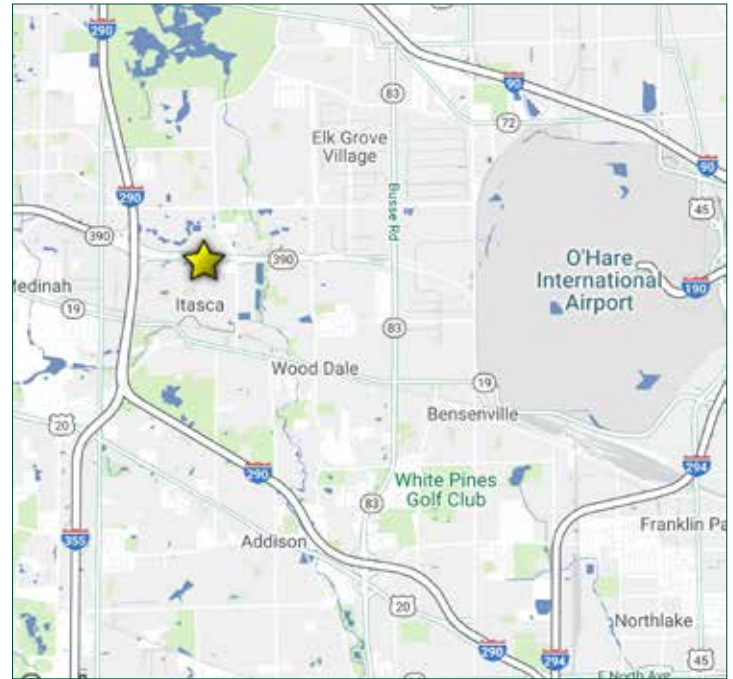


3rd Floor - 31,051 SF



900 N Arlington Heights Road
Itasca, Illinois 60143

Office Building For Sale or Lease



Contact Us

Dan Bessey

First Vice President

O +1 847 706 4921

C +1 847 274-2757

dan.bessey@cbre.com

© 2023 CBRE, Inc. All rights reserved. This information has been obtained from sources believed reliable, but has not been verified for accuracy or completeness. You should conduct a careful, independent investigation of the property and verify all information. Any reliance on this information is solely at your own risk. CBRE and the CBRE logo are service marks of CBRE, Inc. All other marks displayed on this document are the property of their respective owners, and the use of such logos does not imply any affiliation with or endorsement of CBRE. Photos herein are the property of their respective owners. Use of these images without the express written consent of the owner is prohibited.