

12370 Lear Place, Port St. Lucie, FL 34987

AIRCRAFT HANGAR IN TREASURE COAST AIR PARK



FOR **SALE**



LAUREN VINAYA
Sales Associate
O: 772.223.3646 C: 772.486.8336
E: lauren@florida-commercial.net

3,600 SF HANGAR
2.11 AC LOT

309 SE Osceola Street #104 • Stuart, FL 34994 • 772.223.3646 • florida-commercial.net

©Florida Commercial 2021 • This offering is subject to errors, prior to sale/lease, withdrawal, or change in price, terms or conditions without notice.

EXECUTIVE SUMMARY

AIRCRAFT HANGAR IN TREASURE COAST AIR PARK | 12370 Lear Place, Port St. Lucie, FL 34987

SPECS

Price:	\$550,000
Lot Size:	2.11 Acres
Hangar Size:	3,600 SF (60 x 60')
Lot Number:	54
Zoning:	AG-5 Count

PROPERTY OVERVIEW

Located in the exclusive Treasure Coast Air Park in Port St. Lucie, this 60'x60' (3,600 SF) aircraft hangar offers direct runway access in a rare aviation community. The hangar is equipped with water and electric connections and features a large roll-up door for seamless aircraft access and secure storage. This unique property combines functionality with convenience in a prime fly-in location.



LAUREN VINAYA
Sales Associate
O: 772.223.3646 C: 772.486.8336
E: lauren@florida-commercial.net

3,600 SF HANGAR
2.11 AC LOT



LAUREN VINAYA
Sales Associate
O: 772.223.3646 C: 772.486.8336
E: lauren@florida-commercial.net

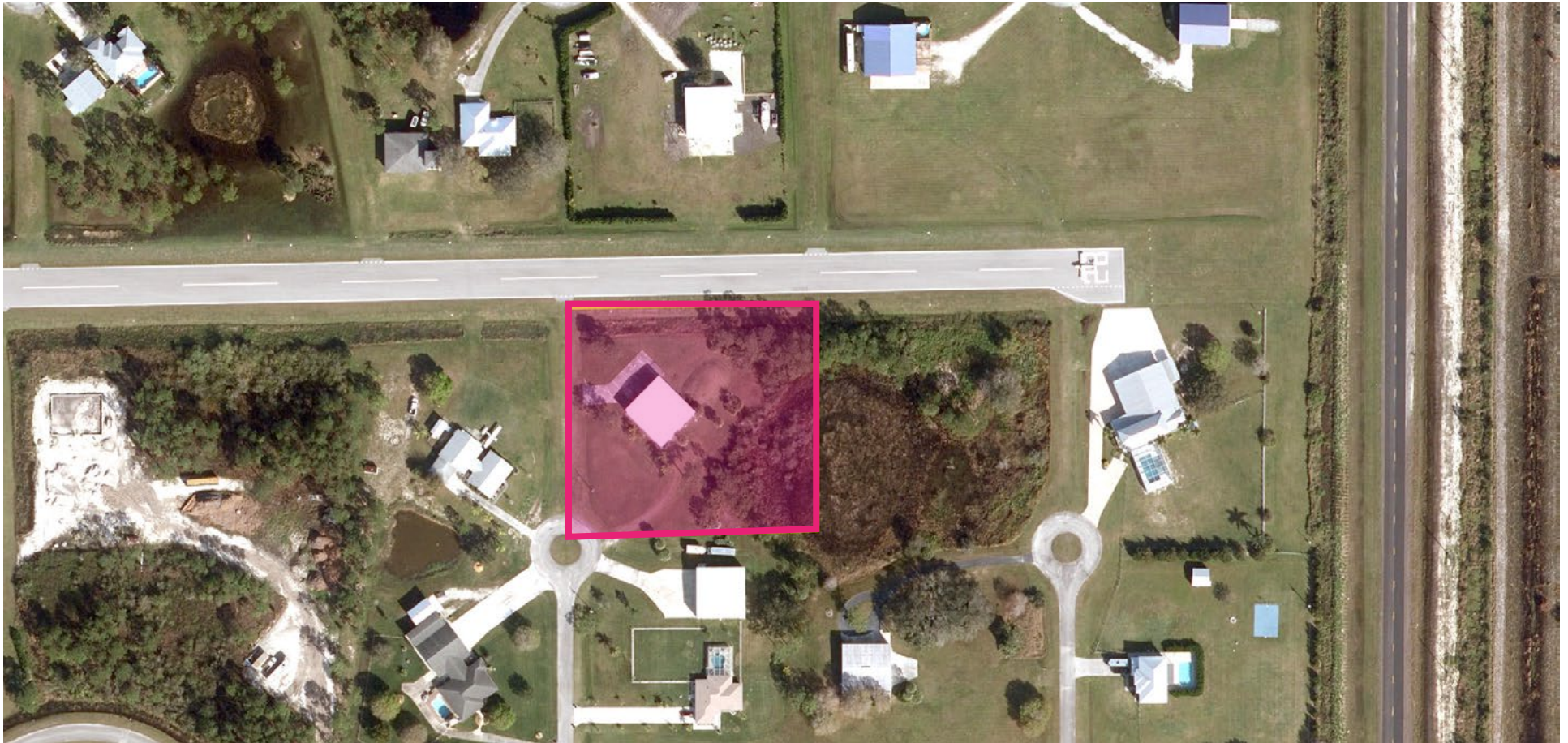
3,600 SF HANGAR
2.11 AC LOT

309 SE Osceola Street #104 • Stuart, FL 34994 • 772.223.3646 • florida-commercial.net

©Florida Commercial 2021 • This offering is subject to errors, prior to sale/lease, withdrawal, or change in price, terms or conditions without notice.

AERIAL

AIRCRAFT HANGAR IN TREASURE COAST AIR PARK | 12370 Lear Place, Port St. Lucie, FL 34987



LAUREN VINAYA
Sales Associate
O: 772.223.3646 C: 772.486.8336
E: lauren@florida-commercial.net

3,600 SF HANGAR
2.11 AC LOT

309 SE Osceola Street #104 • Stuart, FL 34994 • 772.223.3646 • florida-commercial.net

©Florida Commercial 2021 • This offering is subject to errors, prior to sale/lease, withdrawal, or change in price, terms or conditions without notice.

MAPS & REPORT

AIRCRAFT HANGAR IN TREASURE COAST AIR PARK | 12370 Lear Place, Port St. Lucie, FL 34987



POPULATION

1 MILE

10 MILES

30 MILES

Population

181K

104.8K

602.4K

Median age

54.3

39.4

44.5



HOUSEHOLDS & INCOME

1 MILE

10 MILES

30 MILES

Total households

5.4K

36.7K

236.2K

of Employees

14.1K

67K

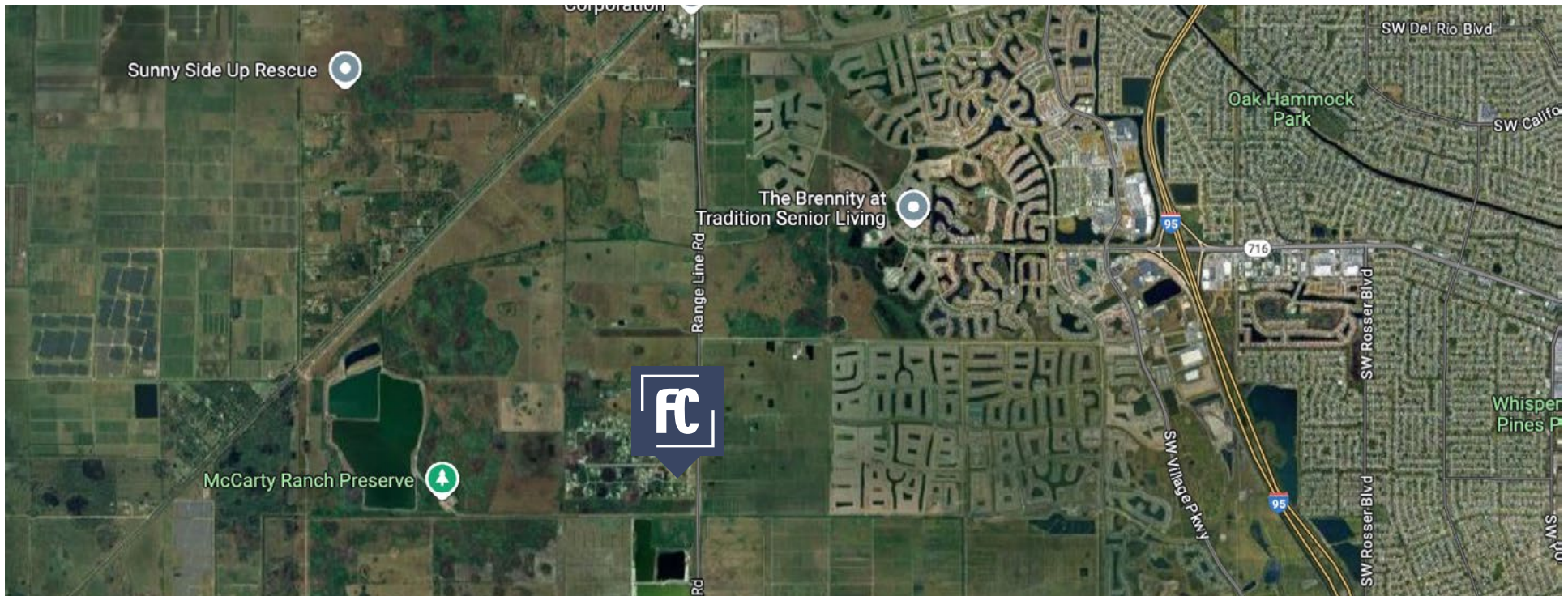
115.8K

Average HH income

\$123.8K

\$68K

\$66.6K



LAUREN VINAYA

Sales Associate

O: 772.223.3646 C: 772.486.8336

E: lauren@florida-commercial.net

3,600 SF HANGAR
2.11 AC LOT