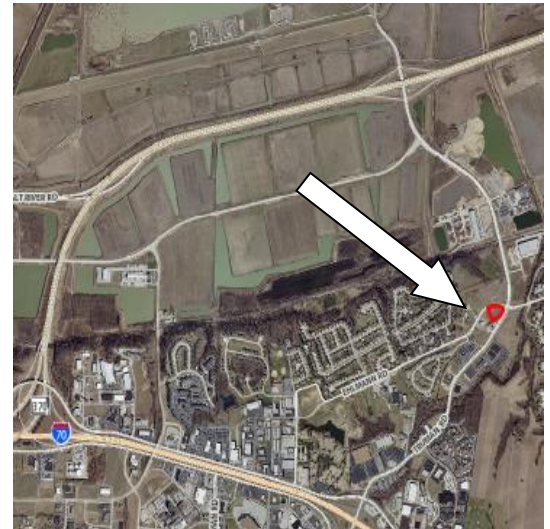
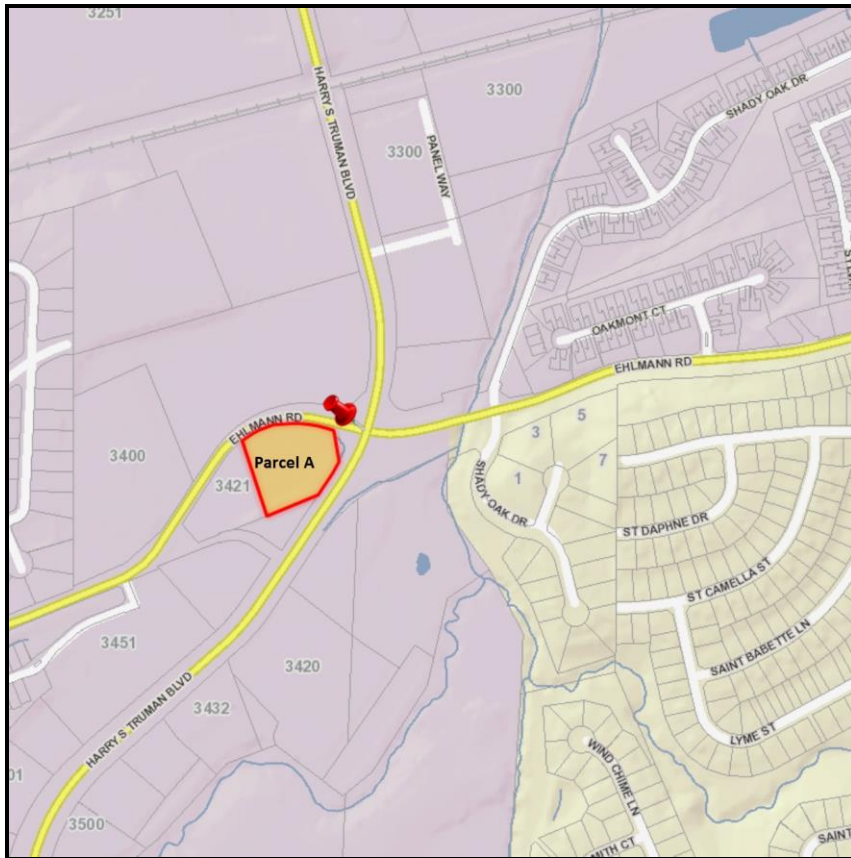


# Land for Sale

## Truman Road and Ehlmann, St. Charles 63301 Parcel A



- Corner of Truman Rd and Ehlmann Rd
- Signalized Intersection
- Going Home Side
- Zoned light industrial
- Electric, sewer, water at site
- Excellent location for gas/convenience store.
- Great Highway access to 370, I-70, and I-364 (Page extension)
- **Parcel A: 2.14 acres at \$10.00 sq ft**

### Directions:

Take Hwy 70 west to Truman, go north to Ehlmann Road or 370 to south on Truman Road to Ehlmann Road.

### For More Information Contact:

**Danny Kluesner**

501 First Capitol Drive

St. Charles, MO 63301

(636) 946-9753 · (314) 712-0055

[kluesner@shockleycommercial.com](mailto:kluesner@shockleycommercial.com)

[www.shockleycommercial.com](http://www.shockleycommercial.com)

