

9,600 SF Truck Repair/Auto Body Commercial Property For Lease



BROWN
COMMERCIAL GROUP, INC.

1385 E. CHICAGO ST., ELGIN, IL 60120

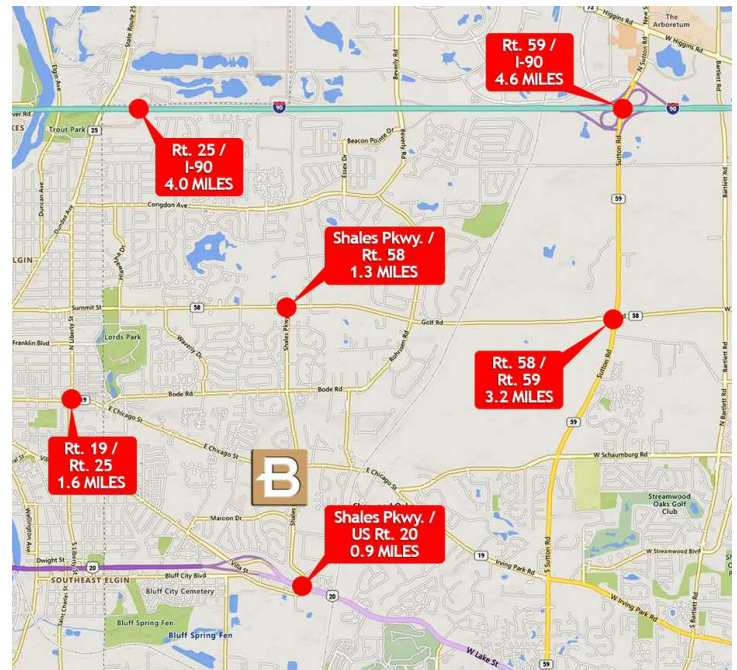


LOCATION DESCRIPTION

Great frontage on Chicago Street (Rt. 19), with easy access to major transportation routes via nearby Rt. 25, US. Rt. 20, I-90.

PROPERTY OVERVIEW

- 9,600 SF Unit
- 550 SF Office Space
- 17' Clear Ceilings
- One (1) 18' x 14' Drive-in Door
- Three (3) 12' x 12' Drive-in Doors
- One (1) 15' x 12' Drive-in Door
- Two (2) 17' x 10' Drive-in Doors
- Triple Basin Trench Drains
- Paint Booth (27' x 13') Included
- Ample Power
- 50 Parking Spots
- Fenced and Secure Property
- Lease Rate: Subject to Offer



JIM PIETRAROSSO

847.758.9200 x314

JIMP@BROWNCOMMERCIAL.COM

DAN BROWN, SIOR

847.758.9200 x302

DBROWN@BROWNCOMMERCIAL.COM

BROWNCOMMERCIAL.COM

// 1400 E. HIGGINS RD. SUITE A, ELK GROVE VILLAGE, IL 60007

// 847.758.9200

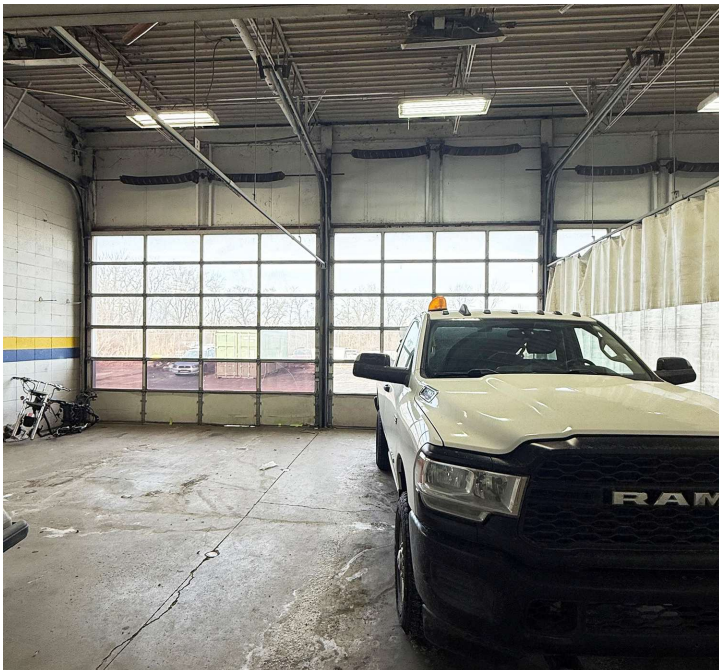
No warranties or representations is made as to the accuracy of the foregoing information. Terms and availability are subject to changes or withdrawal without notice

9,600 SF Truck Repair/Auto Body Commercial Property For Lease



BROWN
COMMERCIAL GROUP, INC.

1385 E. CHICAGO ST., ELGIN, IL 60120



JIM PIETRAROSSO

847.758.9200 x314

JIMP@BROWNCOMMERCIAL.COM

DAN BROWN, SIOR

847.758.9200 x302

DBROWN@BROWNCOMMERCIAL.COM

BROWNCOMMERCIAL.COM

//

1400 E. HIGGINS RD. SUITE A, ELK GROVE VILLAGE, IL 60007

//

847.758.9200

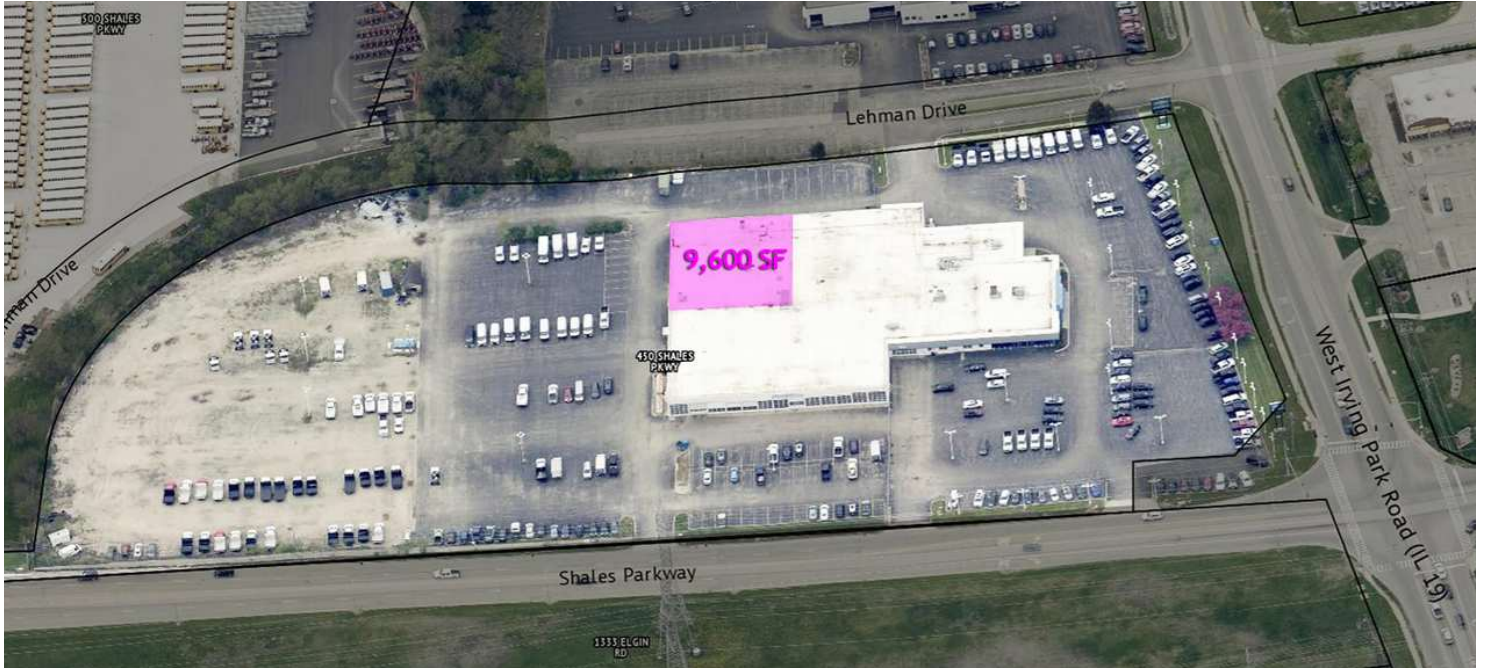
No warranties or representations is made as to the accuracy of the foregoing information. Terms and availability are subject to changes or withdrawal without notice

9,600 SF Truck Repair/Auto Body Commercial Property For Lease



BROWN
COMMERCIAL GROUP, INC.

1385 E. CHICAGO ST., ELGIN, IL 60120



JIM PIETRAROSSO

847.758.9200 x314

JIMP@BROWNCOMMERCIAL.COM

DAN BROWN, SIOR

847.758.9200 x302

DBROWN@BROWNCOMMERCIAL.COM

BROWNCOMMERCIAL.COM

//

1400 E. HIGGINS RD. SUITE A, ELK GROVE VILLAGE, IL 60007

//

847.758.9200

No warranties or representations is made as to the accuracy of the foregoing information. Terms and availability are subject to changes or withdrawal without notice

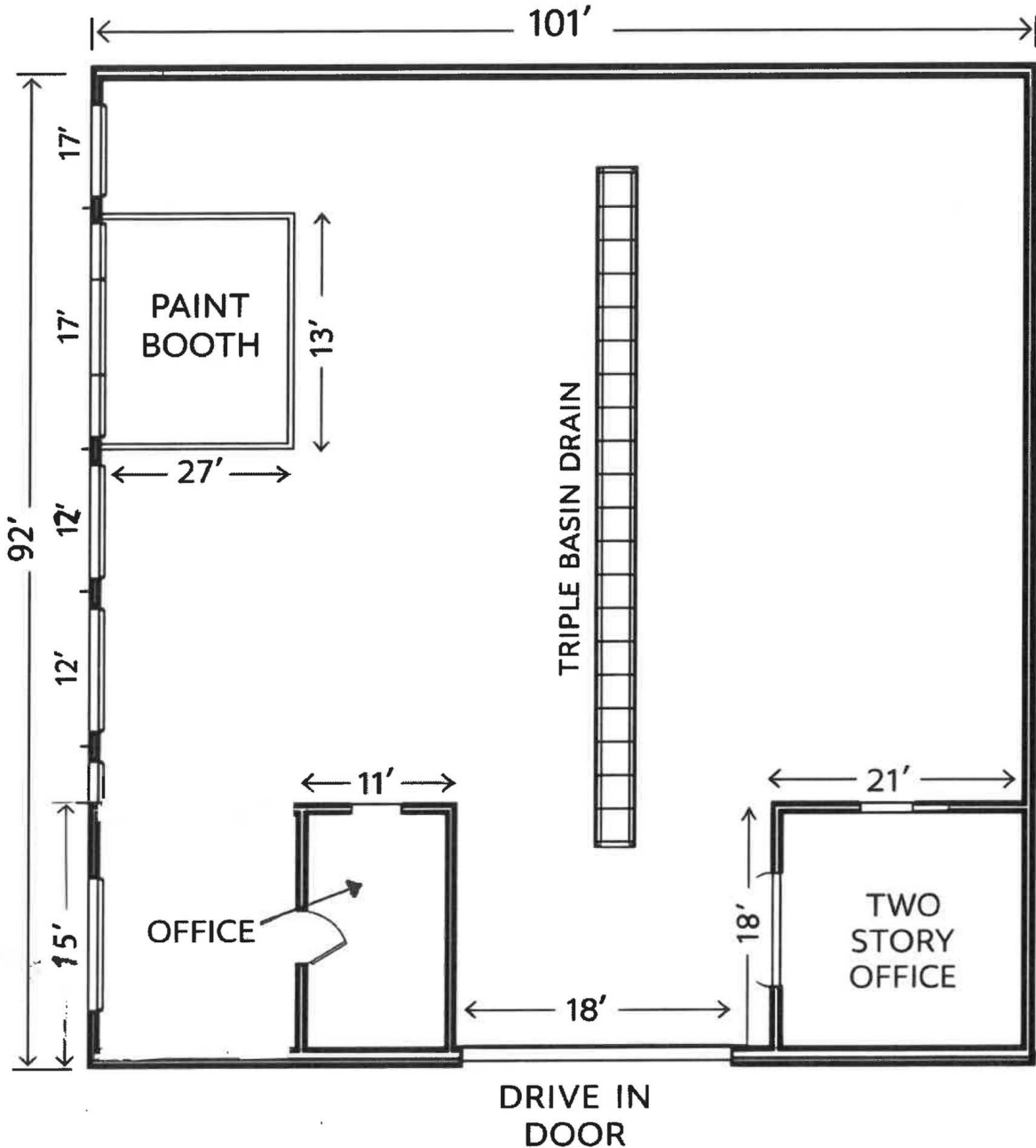
9,600 SF Truck Repair/Auto Body

Commercial Property For Lease



BROWN
COMMERCIAL GROUP, INC.

1385 E. CHICAGO ST., ELGIN, IL 60120



JIM PIETRAROSSO

847.758.9200 x314

JIMP@BROWNCOMMERCIAL.COM

DAN BROWN, SIOR

847.758.9200 x302

DBROWN@BROWNCOMMERCIAL.COM