

±2,150 – 6,650 SF INDUSTRIAL SPACE
3747 W Pacific Ave. Sacramento, CA 95622

Available For Lease



ANTONIA GIAOURIS

Executive Director of Leasing

Antonia.Giaouris@Clire.com | (916) 457 - 9900 x 6



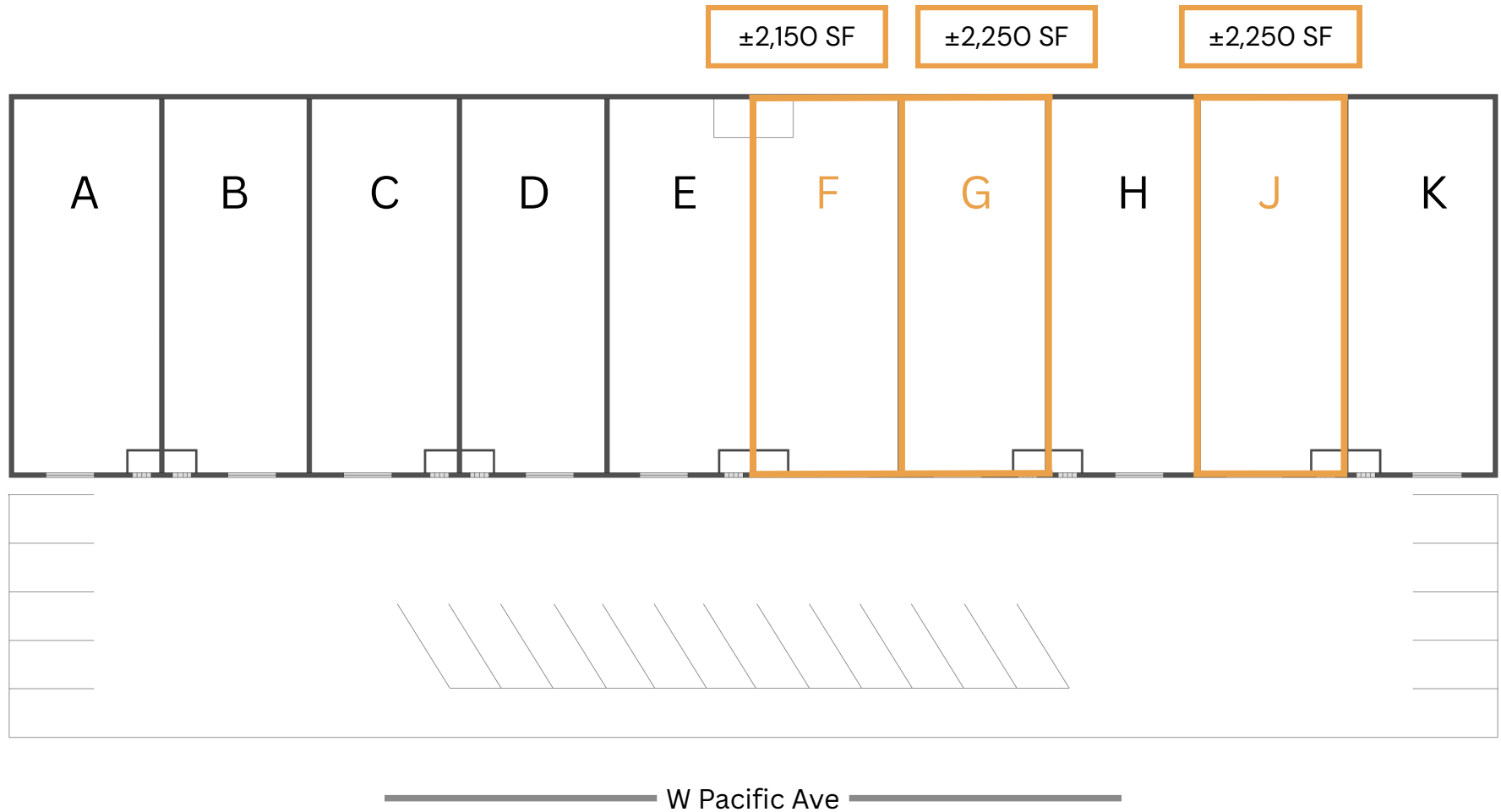
PROPERTY HIGHLIGHTS

- Zoned: C4 - Heavy Commercial
- Electrical: 200-Amp, 240V, 3-Phase Panel; Lessee to verify service capacity
- Total Available SF: ±6,650
- Buildings Area: 22,500 SF | Lot size: 0.83 acre
- Parking Ratio: 162/2.6
- Clear Height: 18'
- Construction: Masonry
- Private restrooms
- Minutes away from Sac City College

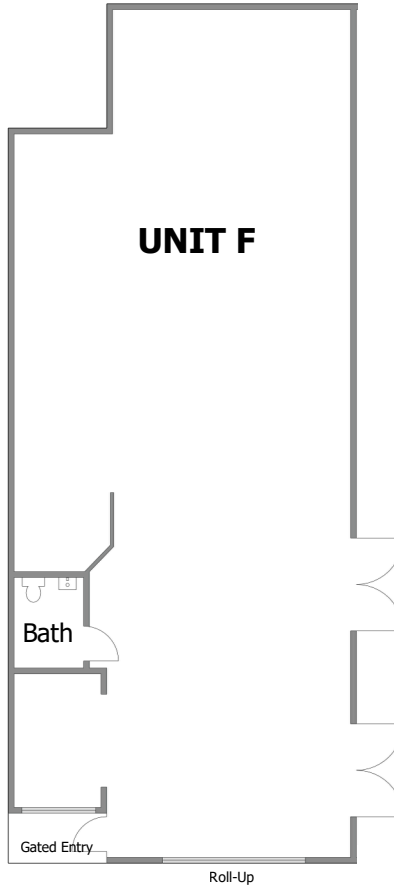


[VIEW LOOPNET LISTING](#)

AVAILABLE UNITS



UNIT F

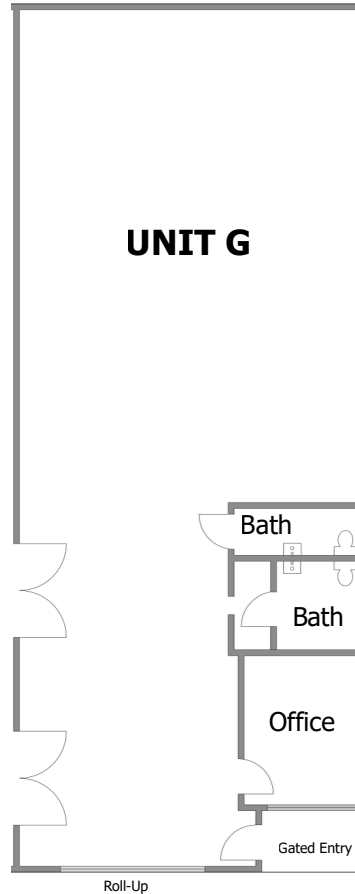


HIGHLIGHTS

- ±2,150 rentable SF
- NNN Lease. Inquire for rate
- Electrical: 200-Amp, 240V, 3-Phase Panel: Lessee to verify service capacity
- Clear ceiling height: 18'
- (1) 12x12 roll-up door. (1) pedestrian doors.
- One single occupant restroom
- Entry room / Office
- Available now

[VIEW VIDEO TOUR](#)

UNIT G

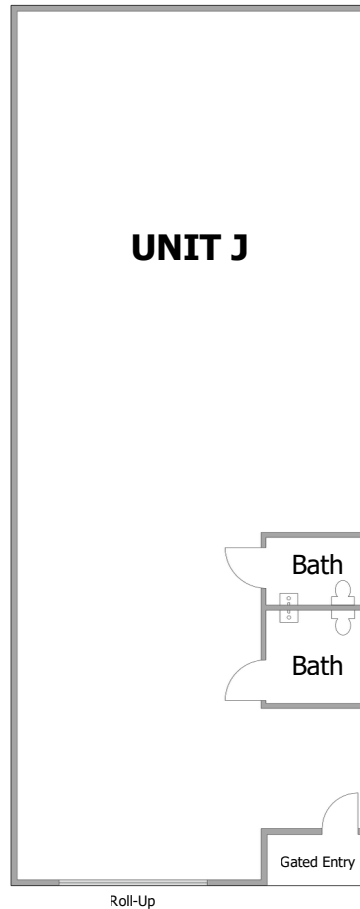


HIGHLIGHTS

- ±2,250 rentable SF
- NNN Lease. Inquire for rate
- Electrical: 200-Amp, 240V, 3-Phase Panel: Lessee to verify service capacity
- Clear ceiling height: 18'
- (1) 12x12 roll-up door. (1) pedestrian doors.
- Two single occupant restrooms
- One private office
- Available now

[VIEW VIDEO TOUR](#)

UNIT J



HIGHLIGHTS

- ±2,250 rentable SF
- NNN Lease. Inquire for rate
- Electrical: 200-Amp, 240V, 3-Phase Panel: Lessee to verify service capacity
- Clear ceiling height: 18'
- (1) 12x12 roll-up door. (1) pedestrian doors.
- Two single occupant restrooms
- Entry / waiting area
- Available now

[VIEW VIDEO TOUR](#)

OTHER AVAILABLE PROPERTIES

Sacramento CA Region

ANTONIA GIAOURIS

Executive Director of Leasing

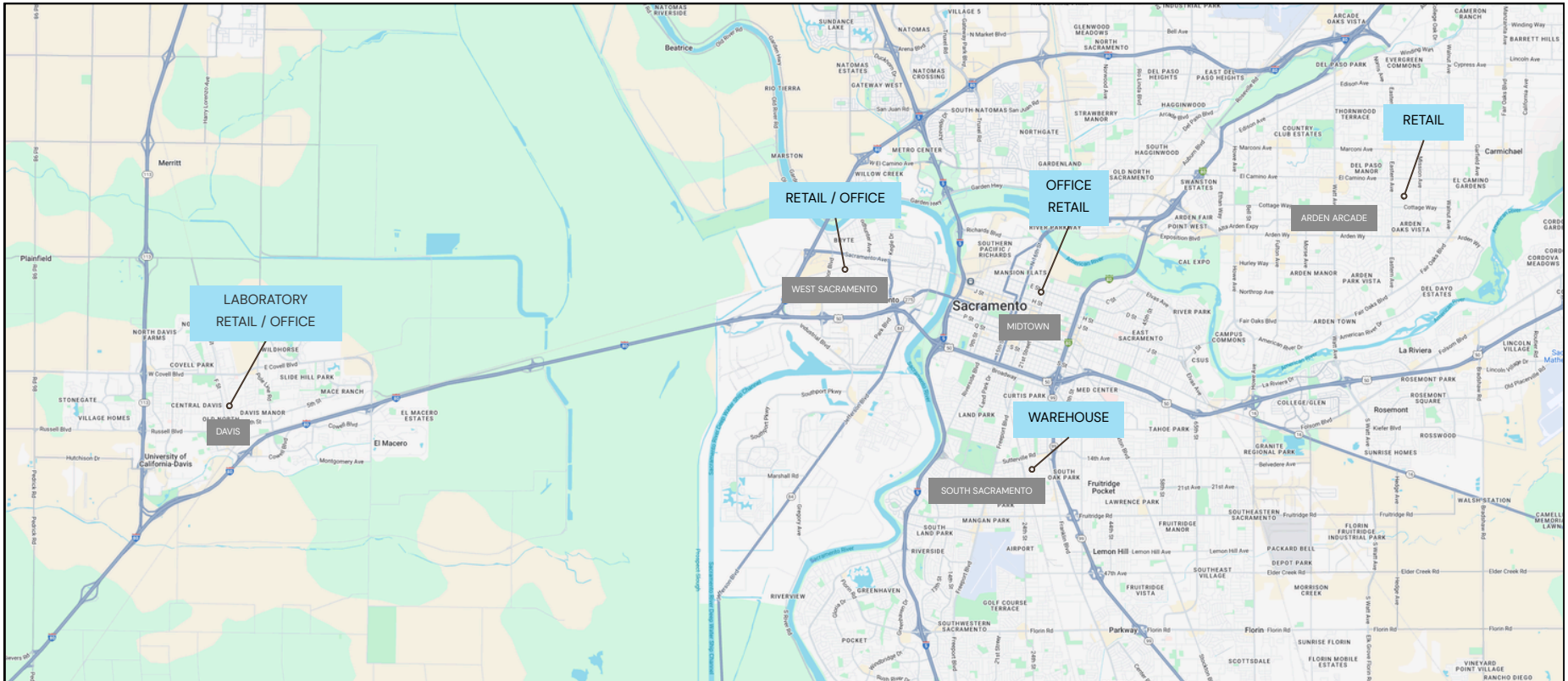
Antonia.Giaouris@Clire.com | (916) 457 - 9900 x 6

[View All Retail](#)

[View All Offices](#)

[View All Warehouses](#)

[View All Laboratories](#)



[View All Available Properties](#)